

**TANCO AUTOWRAP  
550S/550A MODEL 1998  
OPERATORS HANDBOOK  
AND  
PARTS LIST  
WD66-550-S/A-M0398**

## GUARANTEE

Subject as hereunder provided, the Sellers undertake to correct either by repair or at their election by replacement any defect of material or workmanship which occurs in any of its goods within twelve months after delivery of such goods to first user, with the exception of contractors or commercial users when warranty period is six months.

In respect of Autowraps the warranty period is for 12 months or 8000 bales, whichever occurs first. In respect of Aerways, tine breakage will be assessed on an individual basis in every case.

The term goods when used in this document means the article or articles described in Invoice as sold by the Sellers but does not include equipment or proprietary parts or accessories not manufactured by the Sellers. The Sellers, however, undertake to pass on so far as they legally can to the first user the benefit of any warranty given to the Sellers by the suppliers of such equipment, parts or accessories. This understanding shall not apply to:-

- (a) Any goods which have been sold by the first user.
- (b) Any goods which have been injured by unfair wear and tear, neglect or improper use.
- (c) Any goods the identification marks of which have been altered or removed.
- (d) Any goods which have not received the basic normal maintenance such as tightening of bolts, nuts, tines, hose connections and fittings and normal lubrication with the recommended lubricant.
- (e) The use of any product on tractors exceeding the recommended horsepower.
- (f) Any goods which have been altered or repaired other than on instruction or with the written approval of the Seller or to which any part not manufactured or having written approval by the Sellers have been fixed.
- (g) Any second-hand goods or part thereof.

Any allegedly defective part or parts returned to the Sellers must be sent carriage paid. No claim for repair or replacement will be entertained unless upon discovery of the alleged defect written notification is sent to the Sellers giving, at the same time, the name of the Buyer from whom the goods were purchased and the date of purchase, together with full details of the alleged defect and the circumstances involved, also the serial number of the machine etc.

The Sellers shall be under no liability to their Buyers and first or subsequent users of their goods or to any other person or persons for loss or damages howsoever arising in respect of either personal injuries or for arising out of, or in any way connected with or arising from the manufacturers sale, handling, repair, maintenance, replacement or use of its goods or the failure or malfunction of any of its goods.

Representation and/or warranties made by any person (including Buyers and employees and other representatives of the Seller) which are inconsistent or conflicting with these conditions are not binding upon the Sellers unless given in writing and signed by a Director of the Sellers.

## CLAIMS.

If you wish to make a claim under guarantee:

- 1: Immediately, stop using the machine.
- 2: List the details of the machine, its serial number and the part number of the damaged part.
- 3: Consult with your Tanco dealer (supplier) and have him forward your claim and the damaged item to Tanco.

## **EXTENDED WARRANTY**

### **Applies only to Film Stretch Unit**

**SUBJECT TO THE FOLLOWING CONDITIONS:-**

- 1. UPON PURCHASE OF THE TANCO BALE WRAPPING MACHINE, PLEASE COMPLETE AND RETURN THE ATTACHED FORM.**
- 2. THE SERIAL NUMBER IS ON THE CENTRE ROD OF THE K.O. PRE-STRETCH FILM DISPENSER.**
- 3. RETURN THE SLIP DIRECT TO K.O. PRESSURE FRAMES OR TANCO ENGINEERING WITHIN ONE MONTH OF PURCHASE.**

**UPON RECEIPT, K.O. PRESSURE FRAMES LIMITED WILL WARRANTY THE FILM TENSIONING UNIT FOR 2 YEARS FROM DATE OF PURCHASE SUBJECT TO THE TERMS AND CONDITIONS OF THE TANCO MACHINE WARRANTY AND SUBJECT TO THE CORRECT LUBRICATION OF THE FILM DISPENSERS GEARBOX, WHEREBY ONE SHOT OF GREASE EVERY 500 BALES. USE ONLY NLGI 0 GRADE LITHIUM GREASE, WE RECOMMEND SILKOLENE G46 SL EP GREASE OR APPROVED EQUIVALENT, i.e. ESSO BEACON EPO.**

**WARRANTY RETURN FORM**

PURCHASERS NAME:.....

ADDRESS: .....

POST CODE: ..... COUNTRY:.....

TELEPHONE NO: ..... FAX NO:.....

K.O.P.F. DISPENSER SERIAL NUMBER(S): .....

TANCO AUTOWRAP SERIAL NUMBER(S):.....

DATE OF PURCHASE:.....

*PLEASE RETURN TO: K.O. PRESSURE FRAMES LTD, UNIT 3, CHIDDINGSTONE  
CAUSEWAY ESTATE, NR. PENSHURST, KENT. TN11 8JU  
ENGLAND*

*OR TANCO ENGINEERING CO. BAGENALSTOWN, CO. CARLOW,  
EIRE*

**INDEX****550-S / 550-A MODELS****PAGE NO.**

|  |            |
|--|------------|
| GENERAL SAFETY INSTRUCTION                               | 1, 2, 3    |
| SAFETY INSTRUCTIONS                                      | 4          |
| SAFETY DECALS  | 5          |
| TECHNICAL SPECIFICATIONS                                 | 6          |
| PRE DELIVERY INSTRUCTIONS                                | 7, 8, 9    |
| TRANSPORT INSTRUCTIONS                                   | 10         |
| MACHINE IDENTIFICATION                                   | 10         |
| PREPARATION OF NEW MACHINE                               | 10         |
| HYDRAULIC CONNECTIONS                                    | 10         |
| BALE WRAP CONTROLLER 550-S MODEL                         | 11         |
| BALE WRAP CONTROLLER FUNCTIONS                           | 12         |
| JUNCTION BOX & CONTROLLER FOR 4 BANK VALVE               | 13         |
| AUTOMATIC BALE WRAP CONTROLLER 550-A MODEL               | 14         |
| OPERATOR ACCESSABLE MONITOR PROGRAMMES 550-A MODEL       | 15, 16, 17 |
| MODE OF OPERATION 550-A MODEL                            | 18         |
| OPERATING INSTRUCTIONS                                   | 19         |
| WARNING: LIFT ARM  | 19         |
| FILM OVERLAP SYSTEM                                      | 20         |
| SERVICE AND MAINTENANCE                                  | 21, 22     |
| FILM THREADING DIAGRAM                                   | 23         |
| GEARBOX CHAIN DRIVE TENSIONING SYSTEM                    | 24         |
| TURNTABLE CHAIN DRIVE TENSIONING SYSTEM                  | 25         |
| FILM ADAPTOR OPERATING INSTRUCTIONS                      | 26         |
| ELECTRICAL COMPONENTS 550-S MODEL                        | 27         |
| ELECTRICAL COMPONENTS 550-A MODEL                        | 28         |
| HYDRAULIC CIRCUIT DIAGRAM 550-S MODEL                    | 29         |
| HYDRAULIC CIRCUIT DIAGRAM 550-A MODEL                    | 30         |
| HYDRAULIC COMPONENTS 550-S MODEL                         | 31         |
| PARTS LIST FOR ABOVE                                     | 32         |
| HYDRAULIC COMPONENTS 550-A MODEL                         | 33         |
| PARTS LIST FOR ABOVE                                     | 34         |
| FITTING 2 WAY SOLENOID VALVE                             | 35         |
| CONSTANT INDEXING DRIVE ASSEMBLY                         | 36         |
| PARTS LIST FOR ABOVE                                     | 37         |
| AUTOWRAP ILLUSTRATED                                     | 38         |
| PARTS LIST FOR ABOVE                                     | 39         |
| TURNTABLE CHAIN DRIVE ASSEMBLY                           | 40         |
| LIFT ARM ASSEMBLY  | 41         |
| FILM DISPENSING SYSTEM 550-S/550-A MODEL                 | 42         |
| PARTS LIST FOR ABOVE                                     | 43         |
| VALVE/JUNCTION BOX/FILTER & DIVERTER VALVE MT'G BKT ASSY | 44         |
| FAULT FINDING SUMMARY                                    | 45         |
| HYD CUT & START UNIT ILLUSTRATED                         | 46         |
| PARTS LIST FOR ABOVE                                     | 47         |
| RECHARGING HYDRAULIC CYLINDER                            | 48         |
| TURNTABLE LOCKING ARRANGEMENT                            | 49         |
| CUT & START SENSOR MAGNET MTG BRACKETS                   | 50         |
| HYDRAULIC BALE RAMP                                      | 51         |
| PARTS LIST FOR ABOVE                                     | 52         |
| LIGHTING KIT   | 53         |

Fig 1 - Page No. 23

Fig 2 - Page No. 24

Fig 3 - Page No. 24

Fig 5 - Page No. 22

Fig 6 - Page No. 11

Fig 7 - Page No. 14

Fig 8 - Page No. 25

## GENERAL SAFETY RECOMMENDATIONS

Before operating the machine, always ensure that the tractor and machine meet with work safety and road traffic regulations.

### BASIC PRINCIPLES

- 1: In addition to the recommendations given in this manual, legislation on work safety and accident prevention must also be respected.
- 2: Advice is indicated on the machine, specifying safety recommendations in order to prevent accidents.
- 3: Before travelling on public roads, the operator must ensure that the machine conforms to road traffic regulations.
- 4: Before starting work, the operator must be familiar with all machine controls, handling devices and their functions. Once at work, it is too late to do this!
- 5: Do not wear loose clothing which could become caught up in moving elements.
- 6: The tractor should be equipped with a safety cab.
- 7: Before starting up the machine and beginning work, check the surrounding area (beware of children!). Make sure there is sufficient visibility. Keep all people and animals away from the danger zone of the machine (risk of projection!).
- 8: Carrying people or animals on the machine when working or in transport is strictly forbidden.
- 9: Machine must only be attached to tractor using means provided and in accordance with current safety standards.
- 10: Special care should be taken when attaching or removing the machine from the tractor.
- 11: Before transporting the machine on public roads, ensure that all legally required guards and indicators (lights, reflectors ...) are in place and in good operation.
- 12: All operating controls (cords, cables, rods etc.) must be positioned so that they cannot be set off accidentally, risking accident or damage.
- 13: Before travelling on public roads, put the machine into its transport position as instructed in this operators manual.
- 14: Never leave the tractor seat while the machine is operating.
- 15: Drive speed must be adapted to ground conditions as well as to roads and paths. Always avoid abrupt changes of direction.
- 16: Before operating the machine, ensure that all safety guards are firmly in place and in good condition. If worn or damaged, replace immediately.
- 17: Before operating the machine, check the tightness of all nuts and bolts, particularly on fixing elements (blades, tines, knives, spades etc.,).
- 18: Keep clear of the machine operating area.
- 19: **WARNING!** Danger of crushing and shearing can exist when components are operated by hydraulic or pneumatic controls.
- 20: Before leaving the tractor or before adjusting, maintaining or repairing the machine, turn off the engine, remove the ignition key and wait until all moving parts have come to a complete stop.

- 21: Do not stand between the tractor and the machine unless the hand brake is tight and/or stops have been placed under the wheels.
- 22: Before any adjustments, maintenance or repairs are carried out, ensure that the machine cannot be started up accidentally.

#### ADDITIONAL RECOMMENDATIONS FOR LINKAGE MOUNTED MACHINES

- 1: Before attaching the machine, ensure that the front tractor axle is sufficiently ballasted. Ballast is to be placed on the supports provided in accordance with instructions of the tractor manufacturer.
- 2: Do not exceed the maximum axle load or the overall transport weight prescribed by the tractor manufacturer.
- 3: Precision steering, tractor adherence, road holding and efficient braking are influenced by the type of implement, weight, ballast of front axle, ground or road conditions. It is therefore of utmost importance to be cautious in every given situation.
- 4: Be particularly cautious when turning corners, paying attention to machine overhang, length, height and weight.

#### SAFETY RECOMMENDATIONS FOR ATTACHING IMPLEMENTS TO TRACTOR

- 1: When attaching or removing the machine from the tractor, position hydraulic lift control lever in such a way that it cannot be set off accidentally.
- 2: When attaching the machine to the tractor hydraulic linkage, ensure that diameter of the link pins corresponds to the diameter of the ball joints.
- 3: **WARNING!** Danger of crushing and shearing can exist in the lifting zone of the tractor hydraulic linkage!
- 4: Do not stand between the tractor and the machine when operating the outer lever of the lift mechanism.
- 5: In transport, the machine lift mechanism should be stabilized by tractor tie rods to avoid floatation and side shifting.
- 6: When transporting the machine, lock the hydraulic lift control lever in place so that it cannot be lowered accidentally.

## HYDRAULIC SYSTEM

- 1: **WARNING!** Hydraulic system is under pressure.
- 2: When fitting hydraulic motors or cylinders, ensure that connections have been made correctly, as per manufacturers instructions.
- 3: Before connecting hoses to the tractor hydraulics, ensure that tractor and machine circuits are not under pressure.
- 4: It is strongly recommended that the operator marks the hydraulic connections between tractor and machine to avoid making a wrong connection.  
**WARNING!** Functions could be reversed (for example: lift/lower).
- 5: Check hydraulic hoses regularly! Worn or damaged hoses must be replaced immediately. Replacement parts must be in accordance with the manufacturers recommendations concerning specifications and quality.
- 6: Should a leak be found, take all necessary precautions to avoid accidents.
- 7: Any liquid under pressure (particularly oil from hydraulics) can penetrate the skin and cause severe injury. If injured, see a doctor immediately, there could be a danger of infection.
- 8: Before any adjustments, maintenance or repairs are carried out, lower the machine, depressurize the circuit, turn off the engine and remove the ignition key.

## MAINTENANCE

- 1: Before checking for any machine malfunction and before adjusting, maintaining or repairing the machine, turn off engine and remove ignition key.
- 2: Check tightness of nuts and bolts regularly. Retighten if necessary.
- 3: If the machine is raised, prop it up in a stable position before carrying out any maintenance work.
- 4: When replacing a working part, wear protection gloves and use only standardized tools.
- 5: It is forbidden to discard any oil, grease or filters. These must be given to waste disposal organisations to protect the environment.
- 6: Disconnect power source before any work is done to the electric system.
- 7: Check safety guards regularly, particularly those that are subject to wear. Replace immediately if damaged.
- 8: Spare parts used must be in accordance with specifications and standards as defined by the manufacturer. Use only genuine TANCO parts.
- 9: Before any electric welding is carried out on tractor or attached machine, disconnect generator and battery terminals.
- 10: Repairs on elements under pressure or tension (springs, accumulators etc.) must only be carried out by competent persons with standardized equipment.



### SPECIAL SAFETY INSTRUCTIONS

1. Stop engine of tractor before working on machine.
2. Put a suitable prop under raised platform before working in this area.
3. Always raise Lift Arm and fit safety prop before transporting machine on public roads.
4. Lift Arms should always be lowered before operating turntable.
5. Ensure platform rollers are parallel to Lift Arm before arm is raised.
6. On Autowrap models fitted with hydraulic bale ramp it is essential that the hydraulic hose is not disconnected from the hydraulic cylinder or hydraulic accumulator. This system is charged under pressure. Also, do not attempt to open the hydraulic accumulator as this is a pressurised unit.

### OPERATING SAFETY INSTRUCTIONS

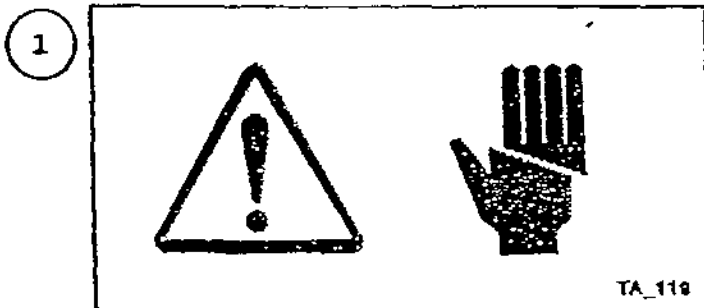
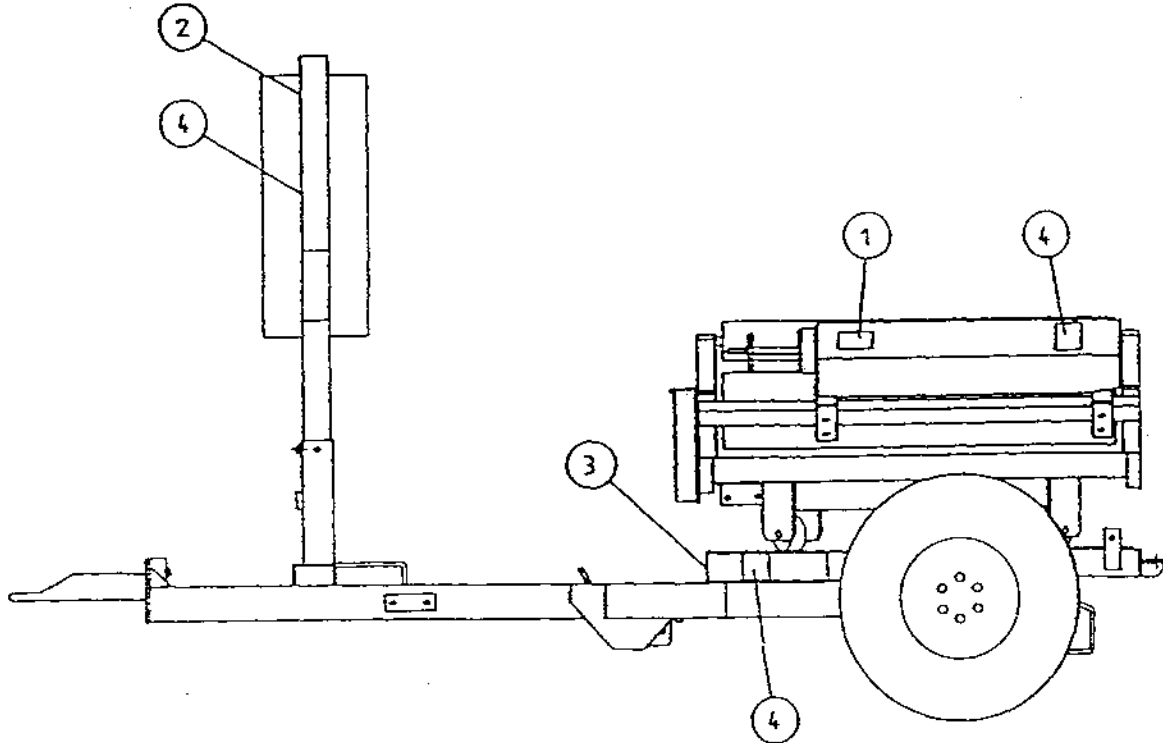
1. Operators should have their hands on the controls at all times when machine is in use.
2. Autowrap control unit and level controls must remain in the tractor cab at all times. The operator must at no time leave the tractor cab when the machine is in motion.
3. Keep onlookers clear of machine at all times. Danger zone is 5 metres.
4. Beware of rotating turntable and all moving parts.
5. If not operated correctly the bale could fly off the turntable. The end support rollers must always be fitted. Do not exceed recommended turntable speed of 30 r.p.m., Mis-shapen bales combined with excessive turntable speeds can be dangerous.
6. Care must be taken when tipping bales from machine on sloping ground and during subsequent handling to ensure that they do not roll, thus causing hazard.

THINK OF YOUR PERSONAL SAFETY AND THAT OF OTHERS AT ALL TIMES.

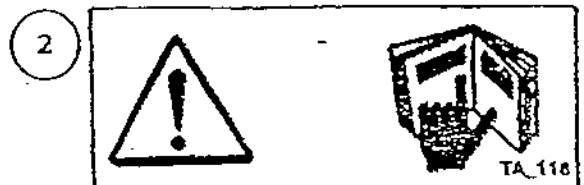
# SAFETY DECALS

The following safety decals have been placed on your machine in the areas indicated. They are intended for your personal safety and for the safety of the people working with you. With this manual, walk around your machine and note the content and location of these warning signs. Review these decals and the operating instructions in the manual with your machine operators.

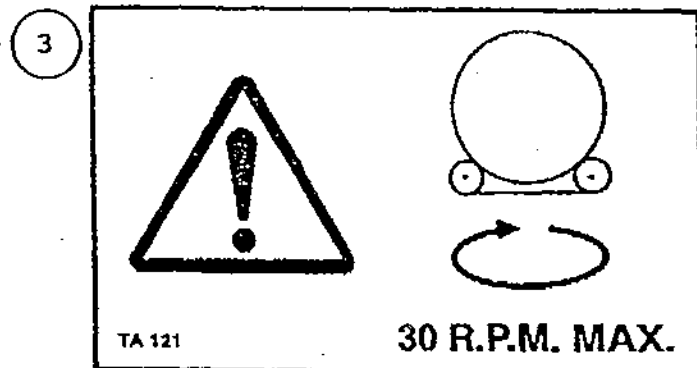
Ensure that these decals are always legible. If they are not, replace them.



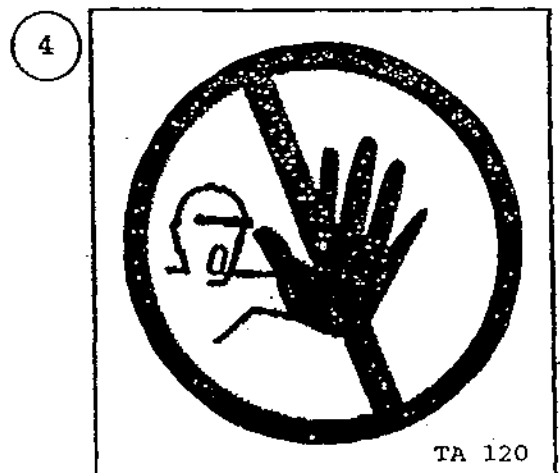
WARNING SHARP KNIFE



BEFORE STARTING THE MACHINE READ OPERATORS MANUAL AND SAFETY INSTRUCTIONS



DO NOT EXCEED TURNTABLE SPEED OF 30 R.P.M



DANGER STAND CLEAR

## TECHNICAL SPECIFICATIONS

550S/550A  
Models Trailed

### Dimensions

|  |        |       |
|--|--------|-------|
| Total length - Excluding Bale Ramp         | ...    | 350cm |
| Width - excluding lift arm                 | ... .. | 221cm |
| " - lift arm fully raised                  | ... .. | 243cm |
| " - lift arm lowered                       | ... .. | 380cm |
| Height to top of side (bale guide) rollers |        | 110cm |
| Height to top of lift arm                  | ... .. | 242cm |

### Weight

|                  |        |         |
|------------------|--------|---------|
| With lift arm    | ... .. | 1080kgs |
| Without lift arm | ... .. | 960kgs  |

### Wheels

|          |        |           |
|----------|--------|-----------|
| Size     | ... .. | 10-80. 12 |
| Pressure | ... .. | 42 p.s.i. |

|  |        |         |
|--|--------|---------|
| Lift arm capacity - Axle extended normally | ... .. | 750kgs  |
| " " " - Axle extended fully                | ... .. | 1000kgs |

|                    |        |  |
|--------------------|--------|--|
| Speed of turntable | ... .. | 30 rev/min*                            |
| Oil requirement    | ... .. | (165 kpcm <sup>2</sup> )<br>25 lit/min |

|                       |        |               |
|-----------------------|--------|---------------|
| Attachment to tractor | ... .. | Tractor Hitch |
|-----------------------|--------|---------------|

|            |        |  |
|------------|--------|--|
| Bale Sizes | ... .. | 120 x 120cm up to<br>150 x 150 cm max<br>weight of 1000kgs |
|------------|--------|--|

|                      |        |  |
|----------------------|--------|--|
| Film (Width of Roll) | ... .. | 500mm on 450S<br>750mm on 550S<br>" " 550A |
|----------------------|--------|--|

\* The speed of rotation can be varied to suit various conditions but on no account should it exceed 30 r.p.m. (Speed in excess of 30 r.p.m. will void warranty).

## PRE DELIVERY INSTRUCTIONS

**IMPORTANT: DO NOT ATTEMPT TO OPERATE UNTIL THE FOLLOWING INSTRUCTIONS ARE PERFORMED OTHERWISE SERIOUS DAMAGE COULD BE CAUSED.**

### 1. MACHINE ASSEMBLY

For ease of transportation some items are removed from their positions and stored elsewhere on the machine. The control box, film dispenser and cut and start unit are stored under the bale belt. Also stored under belt on remote control machines are the infra red receiver and sender units and warning beacon. The film mast is attached to the front of the machine. On round bale machines only, the top rollers c/w mounting brackets and the plastic end rollers are mounted on temporary brackets beside the bale belt. Road wheels, bale lift arm and bale ramp are transported separately. Remove the above items and assemble as detailed in parts list section of this manual taking particular note of the following points.

#### (i) DISPENSER MAST

Insert lift mast into socket towards front of machine. Ensure film pull down ram is faced towards the machine. Attach the pull down arm hydraulic ram. Attach the film dispenser to the mast ensuring that the end marked top is faced up. On remote control machines attach the infra-red receiver and warning beacon to top of mast. The film mast is adjustable. Its position is dependant on bale size and type and is set in the field. It should be set so that centre line of film is in line with centre of bale. See Fig. 1'

#### CUT & START

Attach Cut & Start unit to mounting frame on the left hand side of the machine. It is possible to move the unit along the mounting and fix it to any of three holes. On all round bale wrapping machines the unit is fixed to the centre hole on the mounting frame. Connect electrical supply to unit ensuring that wiring is secure. The cable is stored on the turntable frame near the Cut & Start mounting.

#### (iii) BALE LIFT ARM

Assemble bale lift arm and attach to mounting points on right hand side of main chassis. Attach hydraulic ram to lift arm; grease pivot pins.

#### (iv) TOP ROLLERS AND PLASTIC END ROLLERS

Place plastic end rollers in sockets on the back and front of the turntable. On round bale machines only, attach top rollers and mounting brackets to each side of the machine.

**(v) ROAD WHEELS (trailed machines only)**

Attach road wheels ensuring that nuts are tight and tyre pressure is 50 p.s.i.

**(vi) BALE RAMP OR MAT**

Attach bale ramp or mat to rear of chassis. Note Round bale trailed models have bale ramps with an option of hydraulic bale ramp.

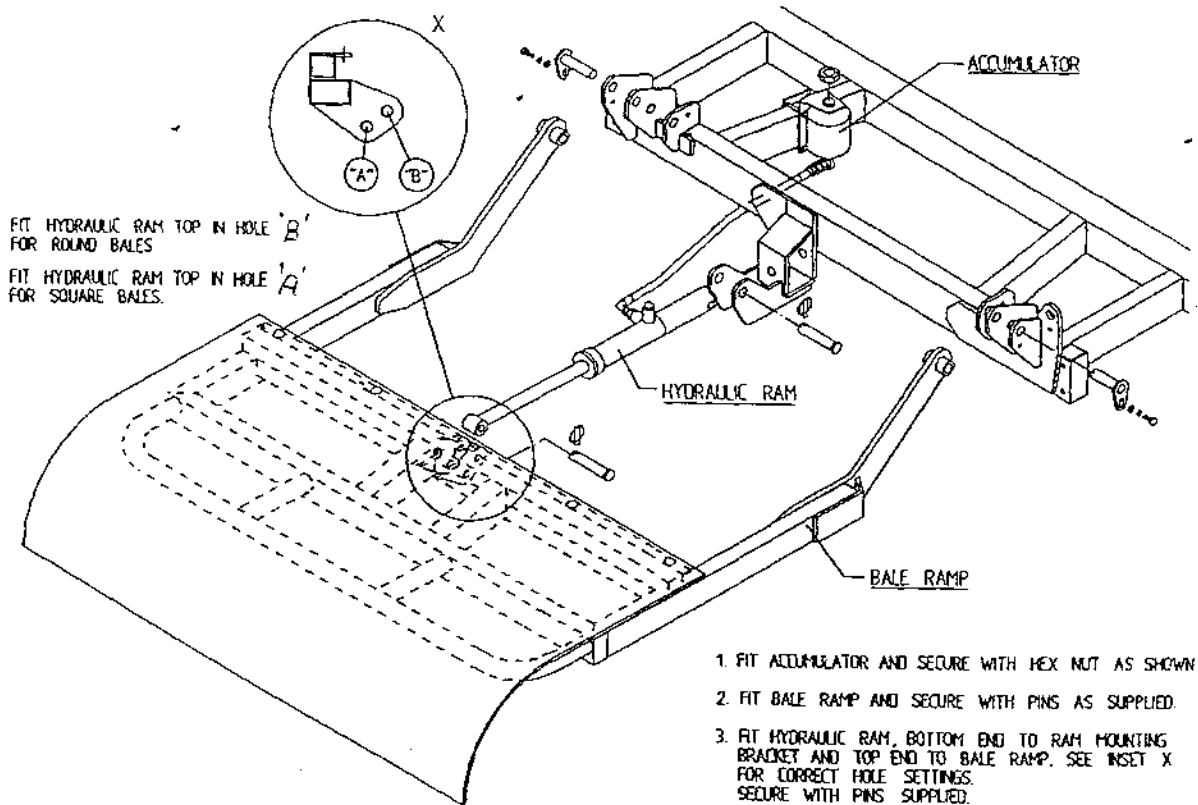
Linkage mounted machines have bale mats. The standard 1050 trailed models have hydraulic bale ramps.

SEE INSTRUCTION BELOW FOR FITTING HYDRAULIC BALE RAMP.

**CHECKS TO BE PERFORMED**

1. Check that all bolts and nuts are tight.
2. That all lubrication points are greased.
3. Check that all guards are in place.
4. Check all operating and safety stickers are in place.

**INSTRUCTIONS FOR FITTING HYDRAULIC BALE RAMP**



## 2. OPERATIONAL TEST

When all above assembly and checks have been carried out the operation of the machine should be checked as follows:

NOTE: IF YOU ARE NOT TOTALLY FAMILIAR WITH THE OPERATION OF THE TANCO CONTROL SYSTEM READ THIS MANUAL IN FULL BEFORE PROCEEDING WITH OPERATIONAL TEST.

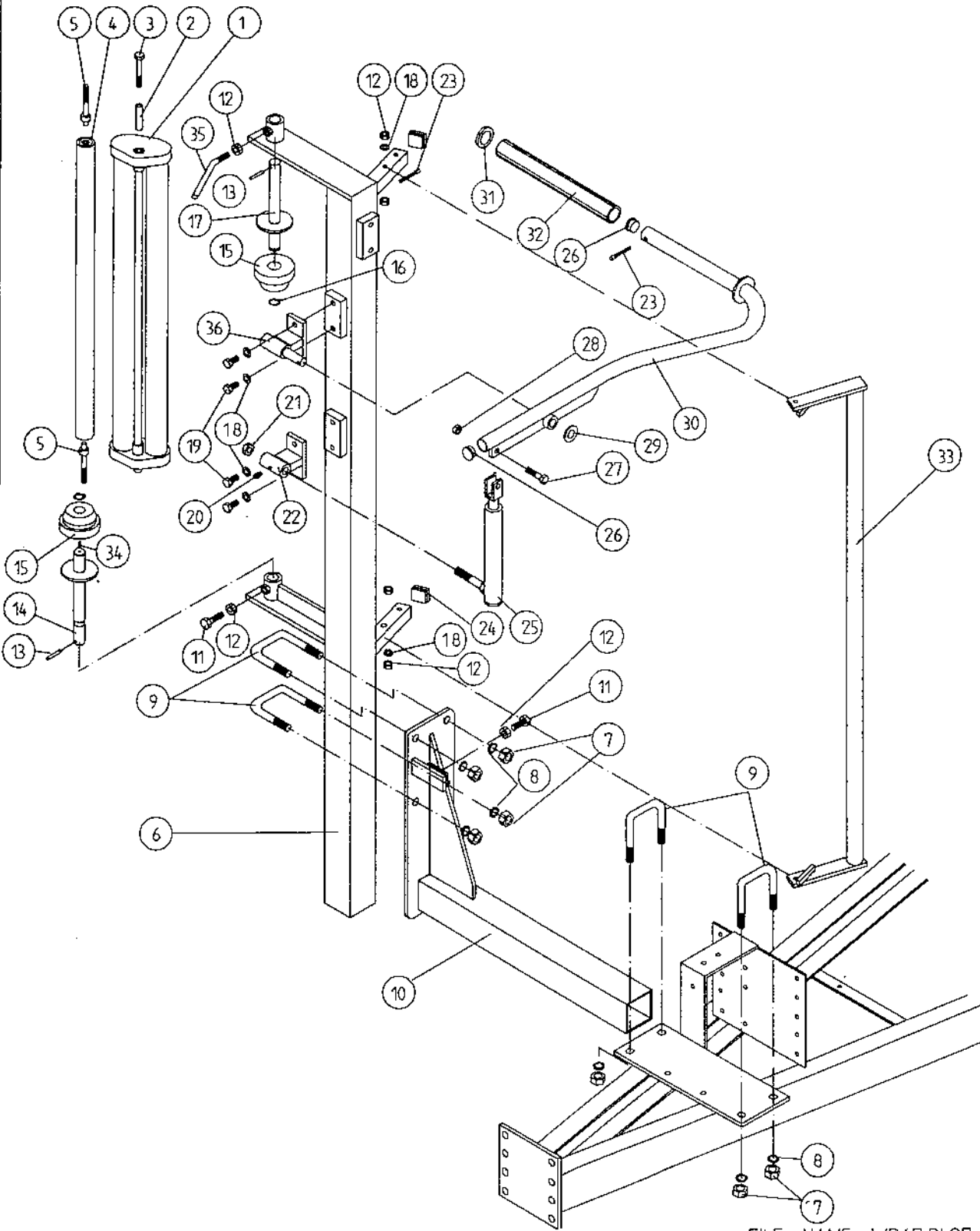
1. Attach machine to tractor.
2. Connect hydraulic hoses to D/A service on tractor.
3. Fit controller box inside cab.
4. Connect control box to machine and connect power cable direct to tractor battery. It is important that the leads are connected with the correct polarity.
5. Fit cable control actuator socket to convenient position in cab and locate actuators in socket.
6. Lock hydraulic lever in tractor so that oil is flowing through system.
7. Check function by operating control levers.
  - (a) Lift arm up and lift arm down. NOTE ensure lift arm is down before moving to (b).
  - (b) Turntable rotation forward and reverse.
  - (c) Tip up and down checking hoses are o.k.
8. Switch controller on.
9. Switch controller to manual operating mode by operating toggle switch.
10. Check Cut & Start plunger out and in.
11. Switch machine to AUTO mode then run through the Wrapping cycle. See operating instruction section of this manual on how the machine should perform, and if any function fails to operate correctly consult fault finding section of the operators manual.

## 3. CUSTOMER CHECKS

Before despatching consult customer on the following points:

1. That the machine model suits his requirements.
2. If machine is to be operated on a tractor with a closed centre hydraulic system then a closed centre valve is required, see separate instructions.
3. That the tow hitch type is compatible with the tractor. Three different hitch types are available.

# TANCO AUTOWRAP TRAILED MODELS FILM DISPENSER SYSTEM



FILE NAME WD67 PL27

## TANCO AUTOWRAP 550A/550S MODELS

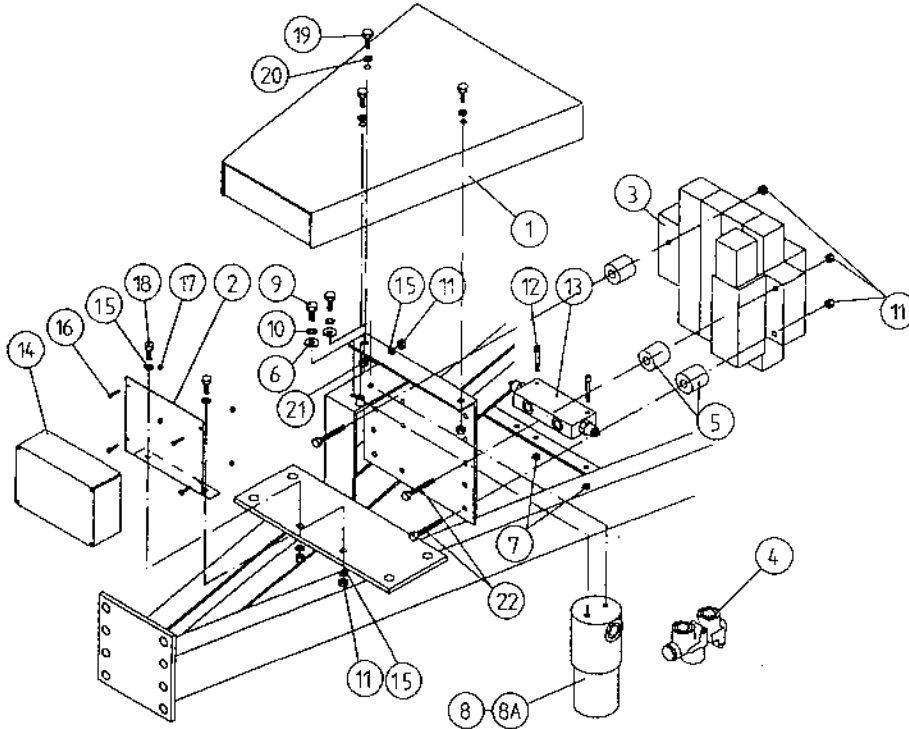
FILM DISPENSING SYSTEM  
PARTS LIST

| ITEM NO: | DESCRIPTION:                          | QTY: | PART NO:    |
|----------|---------------------------------------|------|-------------|
| 1        | FILM DISPENSER UNIT MK9 (70% STRETCH) | 1    | D616        |
| 2        | SLEEVE                                | 1    | D52012-95   |
| 3        | M12 X 80 HEX BOLT                     | 2    | Z26-0901B   |
| 4        | SLAVE ROLLER LONG                     | 1    | Z06-SR95-L  |
| 5        | SLAVE ROLLER PIVOT                    | 2    | WD64-SRP    |
| 6        | DISPENSER MAST                        | 1    | WD69-DM     |
| 7        | M16 HEX NUT                           | 8    | Z18-16      |
| 8        | 16MM SPRING WASHER                    | 8    | Z12-02-16   |
| 9        | 80MM M16 'U' BOLTS                    | 4    | Z35-52      |
| 10       | DISPENSER MAST MOUNTING BRACKET       | 1    | WD67-DMM    |
| 11       | M12 X 40 HEX SET                      | 2    | Z26-084S    |
| 12       | M12 HEX NUT                           | 2    | Z18-12      |
| 13       | 5 X 45 ROLL PIN                       | 2    | Z03-21-15   |
| 14       | FILM SPOOL LOWER                      | 1    | WD67-FSL    |
| 15       | FILM MAST CONE                        | 2    | Z06-45-03   |
| 16       | CIRCLIP                               | 2    | Z28-525     |
| 17       | FILM SPOOL UPPER                      | 1    | WD67-FSU    |
| 18       | 12MM SPRING WASHER                    | 4    | Z12-02-12   |
| 19       | M12 X 30 HEX SET                      | 4    | Z26-082S    |
| 20       | 1/8" B.S.P. STRAIGHT GREASE NIPPLE    | 1    | Z39-60      |
| 21       | M16 LOCKNUT                           | 1    | Z23-16      |
| 22       | FILM PULL DOWN BRACKET ASSEMBLY       | 1    | WD65-FPDB   |
| 23       | 1/4" X 2" SPLIT PIN                   | 2    | Z01-23-29   |
| 24       | PLASTIC CAP                           | 2    | Z32-07      |
| 25       | HYDRAULIC RAM (PULL DOWN)             | 1    | Z01-01-AW25 |
| 26       | 1" G.B. PLASTIC CAP                   | 2    | Z32-14      |
| 27       | M12 X 50 HEX SET                      | 1    | Z26-086S    |
| 28       | M12 LOCKNUT                           | 1    | Z23-12      |
| 29       | 3/4" FLAT WASHER                      | 1    | Z10-02-19   |
| 30       | FILM PULL DOWN ARM ASSEMBLY           | 1    | WD65-FPDA   |
| 31       | RETAINING WASHER                      | 1    | WD60-859    |
| 32       | ROLLER                                | 1    | WD60-866    |
| 33       | FILM GUARD                            | 1    | WD67-FG     |
| 34       | M6 GREASE NIPPLE                      | 1    | Z39-66      |
| 35       | ADJUSTER HANDLE                       | 1    | Z35-55      |
| 36       | PULL DOWN ARM PIVOT                   | 1    | WD67-FPDP   |



TANCO AUTOWRAP 550A/1060A MODEL

VALVE JUNCTION BOX FILTER & DIVERTER VALVE MOUNTING  
BRACKET ASSEMBLY



| ITEM NO: | DESCRIPTION:                    | QTY: | PART NO:     |
|----------|---------------------------------|------|--------------|
| 1        | VALVE COVER PLATE ASSY          | 1    | WD67-VCP     |
| 2        | JUNCTION BOX MOUNTING PLATE     | 1    | WD66-041     |
| 3        | 4 BANK SOLENOID VALVE           | 1    | Z01 -03-A550 |
| 4        | FLOW DIVIDER                    | 1    | Z01-03-10-A6 |
| 5        | SPACER                          | 3    | WD67-1 00    |
| 6        | 8MM DIA MUD FLAP WASHER         | 2    | Z11-02-081   |
| 7        | M6 LOCKNUT (NYLOCK)             | 2    | Z32-06       |
| 8        | OIL FILTER                      | 1    | Z01-24-08    |
| 8A       | OIL FILTER ELEMENT              | 1    | Z01-24-08E   |
| 9        | M8 HEX HD SET X 25MM            | 2    | Z26-040S     |
| 10       | 8MM DIA SPRING WASHER           | 2    | Z12-02-08    |
| 11       | M8 LOCKNUTS                     | 5    | Z23-08       |
| 12       | M6 ALLEN HD SOCKET SCREW X 45MM | 2    | Z13-020-50   |
| 13       | OVER-CENTRE VALVE               | 1    | Z01-03-10-A8 |
| 14       | JUNCTION BOX                    | 1    | ZDG-0550A    |
| 15       | 8MM DIA FLAT WASHER             | 4    | Z10-02-08    |
| 16       | M4 ALLEN HD SOCKET SCREW X 16MM | 4    | Z26-006      |
| 17       | M4 LOCKNUT                      | 4    | Z23-04       |
| 18       | M8 X 20 HEX SET                 | 2    | Z26-039S     |
| 19       | M10 X 20 HEX SET                | 3    | Z26-060S     |
| 20       | 10MM SPRING WASHER              | 3    | Z12-02-10    |
| 21       | M10 HEX NUT                     | 2    | Z18-10       |
| 22       | M8 X 100 HEX SET                | 3    | Z26-057S     |

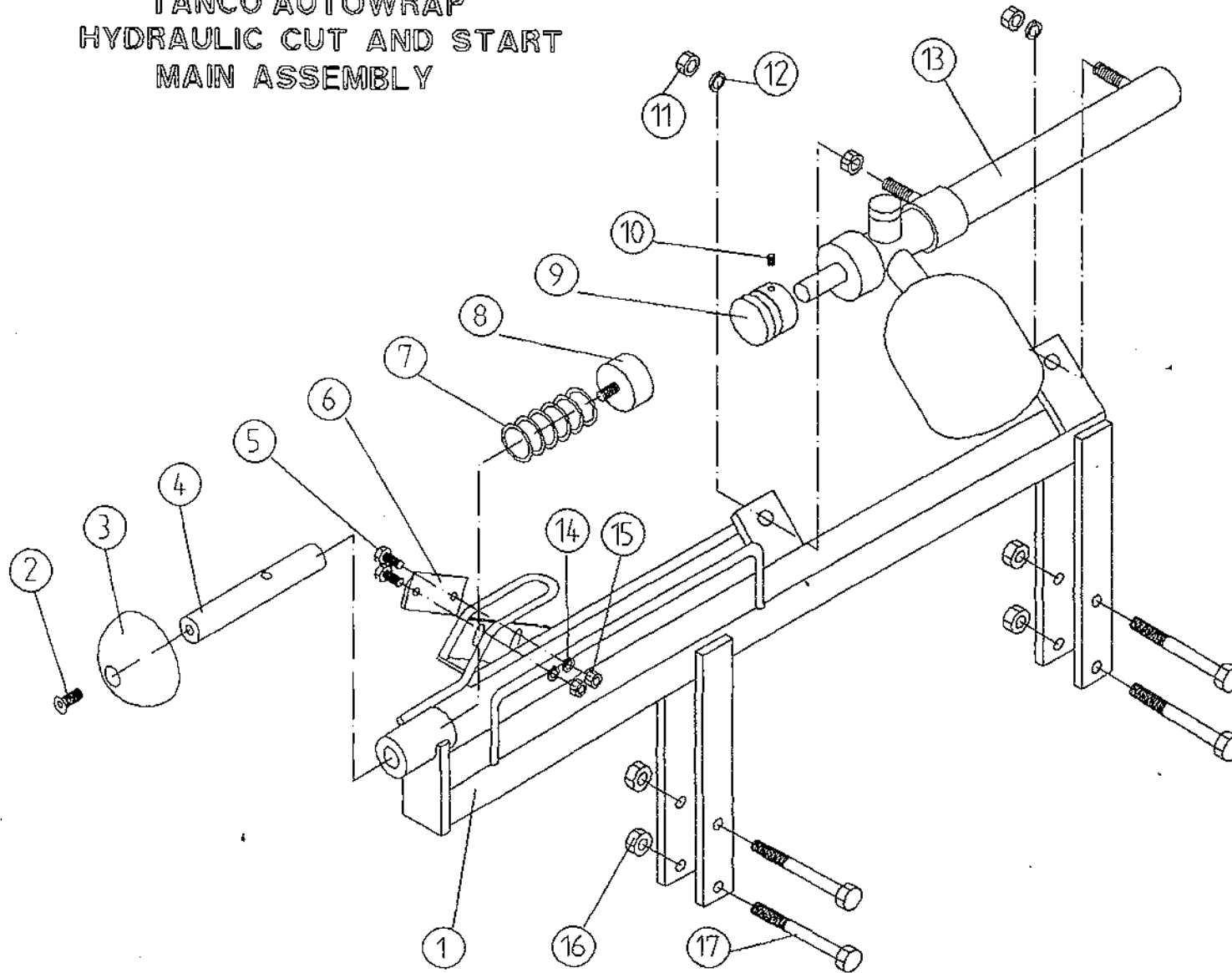
## FAULT FINDING

### PROBLEMS.

### REMEDY.

1. Drive Roller and Bale belt not driving  
Check and replace shear Pins in sprocket on drive roller.
2. Film Breaking  
Wash off dispenser and slave rollers. Change roll of film. Use recommended films only.
3. Film not wrapping evenly on bale.  
Adjust film mast so centre of film roll is aligned with centre of bale .
4. Film Tearing on Ramp.  
Check for sharp edges and remove.
5. Bale Skidding on Ramp.  
Fit Hessian Bag or piece of carpet to Ramp.
6. Film Dispenser not Pre-Stretching Film.  
Check that both Rollers turn when one is turned by hand. If not, fit new gears or replace unit.
7. Tyres coming off 4" platform Support Wheels.  
Replace Wheels - Reduce speed below 30 r.p.m. - Do not grease path of wheels on platform. Check that bale does not get trapped between arms and turntable when being loaded.  
  
If this happens lower arm and start again.
8. Hydraulic Bale Ramp not returning to raised position after tipping off bale.  
See instructions for recharging hydraulic cylinder.
9. Bale Belt Tracking Adjustment
  - (i) Ensure vertical rollers (plastic) are in tight on the bale. Remember that the bale will reduce in size during wrapping and, on the round bales in particular, the corners will become rounded so that the bale will tend to move sideways due to centrifugal forces. Now, if the plastic rollers are too far apart, the bale will move against one of the plastic rollers causing the belt to move in the opposite direction. Always adjust the vertical plastic rollers so that they keep the bale central on the belt.
  - (ii) Adjust bale stop on lift arm so that bale is loaded centrally onto platform.
  - (iii) Check that bale belt is fitted so arrow points in direction of travel.
  - (iv) Check that both 8" rollers underneath the bale belt are parallel to each other. Remember the golden rule - a belt will always move up a slope: So, if the belt continually moves to our side, adjust idler roller to a narrower setting on the opposite side to which the belt travels.
  - (v) Check that gripface strips are securely fixed to the roller and have not moved out of alignment.
  - (vi) Check that is the same measurement each side by running a string around the belt and measuring it. If one side is longer than the other replace the belt.

TANCO AUTOWRAP  
HYDRAULIC CUT AND START  
MAIN ASSEMBLY



**TANCO AUTOWRAP  
HYDRAULIC CUT AND START UNIT  
PARTS LIST**

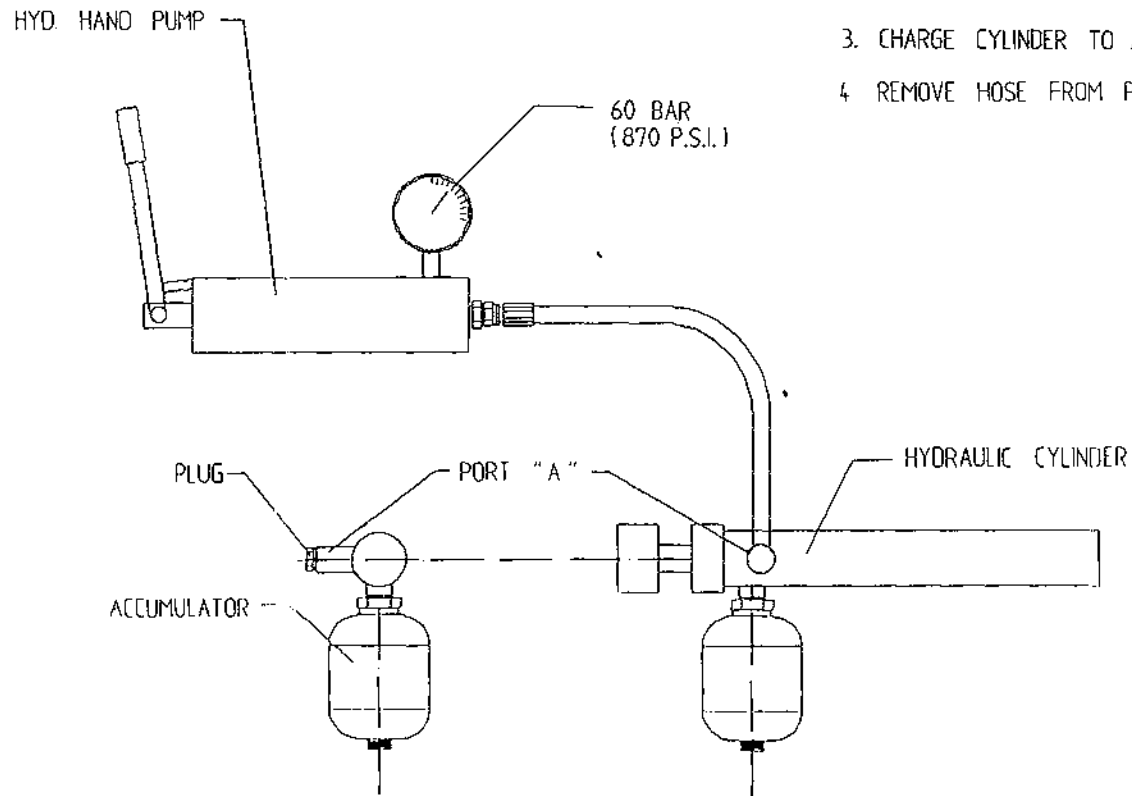
**WD67PL80**

| <b>TEM NO.</b> | <b>DESCRIPTION</b>                    | <b>QTY</b> | <b>PART NO.</b> |
|----------------|---------------------------------------|------------|-----------------|
| 1              | HYDRAULIC CUT AND START MAIN FRAME    | 1          | WD605H-MF       |
| 2              | H10-420 CSK SCREW                     | 1          | Z13-139         |
| 3              | 3" DOMED CAP                          | 1          | WD605H-14       |
| 4              | GRIPPER ROD                           | 1          | WD605H-13       |
| 5              | H6 X 25 HEX SET                       | 1          | Z26-0405        |
| 6              | BLADE                                 | 1          | WD605-104       |
| 7              | SPRING                                | 1          | Z07-49          |
| 8              | GRIPPER PAD (RUBBER)                  | 1          | Z40-28          |
| 9              | GRIPPER PAD                           | 1          | WD605H-15       |
| 10             | M8 X 10 GRUB SCREW                    | 1          | Z28-008         |
| 11             | M14 HEX NUT                           | 3          | Z18-14          |
| 12             | 14MM SPRING WASHER                    | 2          | Z12-02-14       |
| 13             | CUT & START HYDRAULIC RAM ACCUMULATOR | 1          | Z01-01-AWH      |
| 14             | 8MM FLAT WASHER                       | 2          | Z11-02-08       |
| 15             | M8 LOCK NUT                           | 2          | Z23-08          |
| 16             | M10 LOCK NUT                          | 4          | Z23-010         |
| 17             | M10 X 75 HEX BOLT                     | 4          | Z26-069B        |

# TANCO AUTOWRAP - HYDRAULIC CUT AND START

## INSTRUCTIONS FOR RECHARGING HYDRAULIC CYLINDER

- 1 REMOVE PLUG FROM PORT "A"
- 2 CONNECT HOSE FROM HYD HAND PUMP TO PORT "A"
- 3 CHARGE CYLINDER TO A PRESSURE OF 60 BAR (870 P.S.I.)
- 4 REMOVE HOSE FROM PORT "A" AND REFIT PLUG.

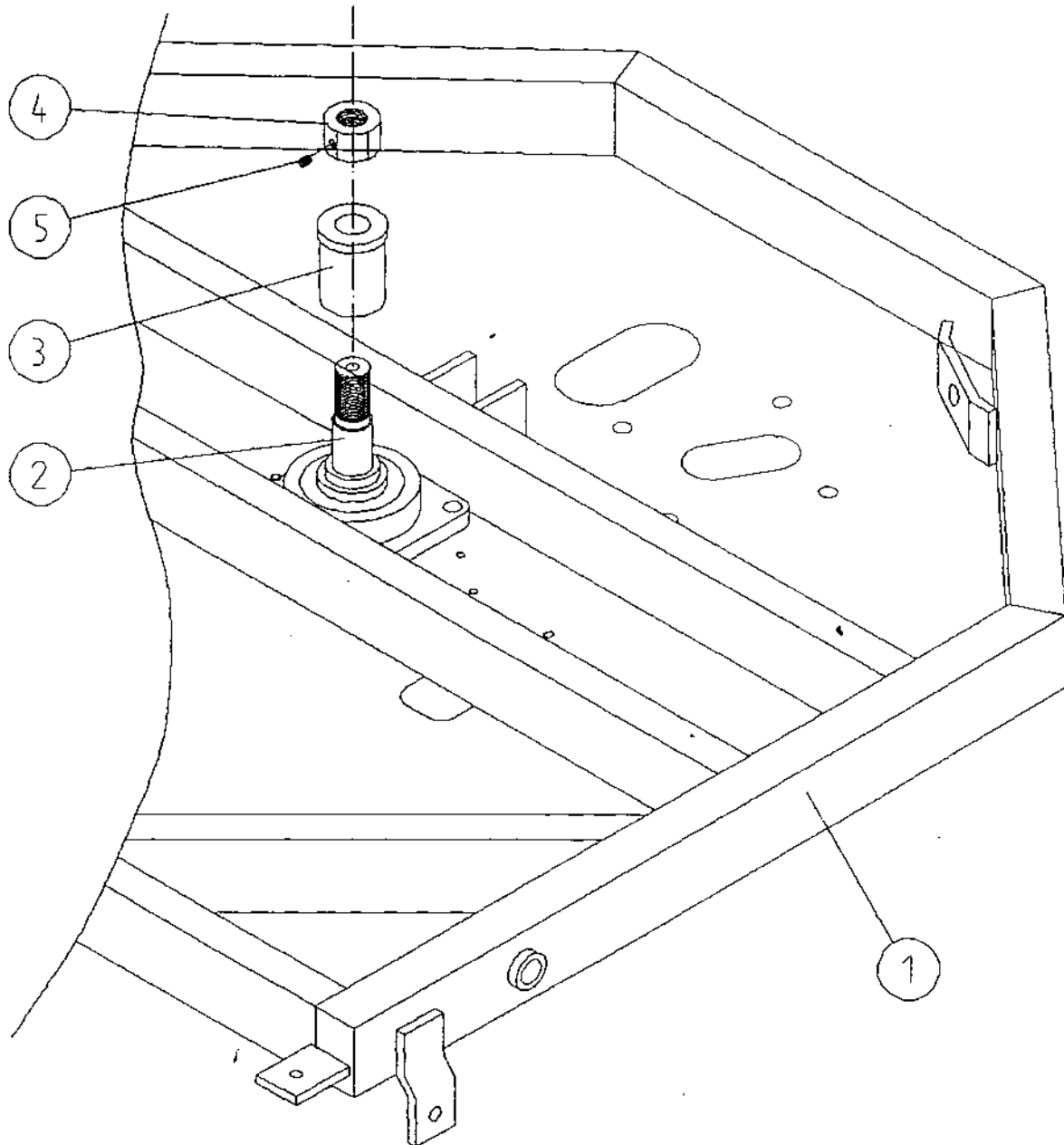


TANCO AUTOWRAP

TURNTABLE LOCKING ARRANGEMENT

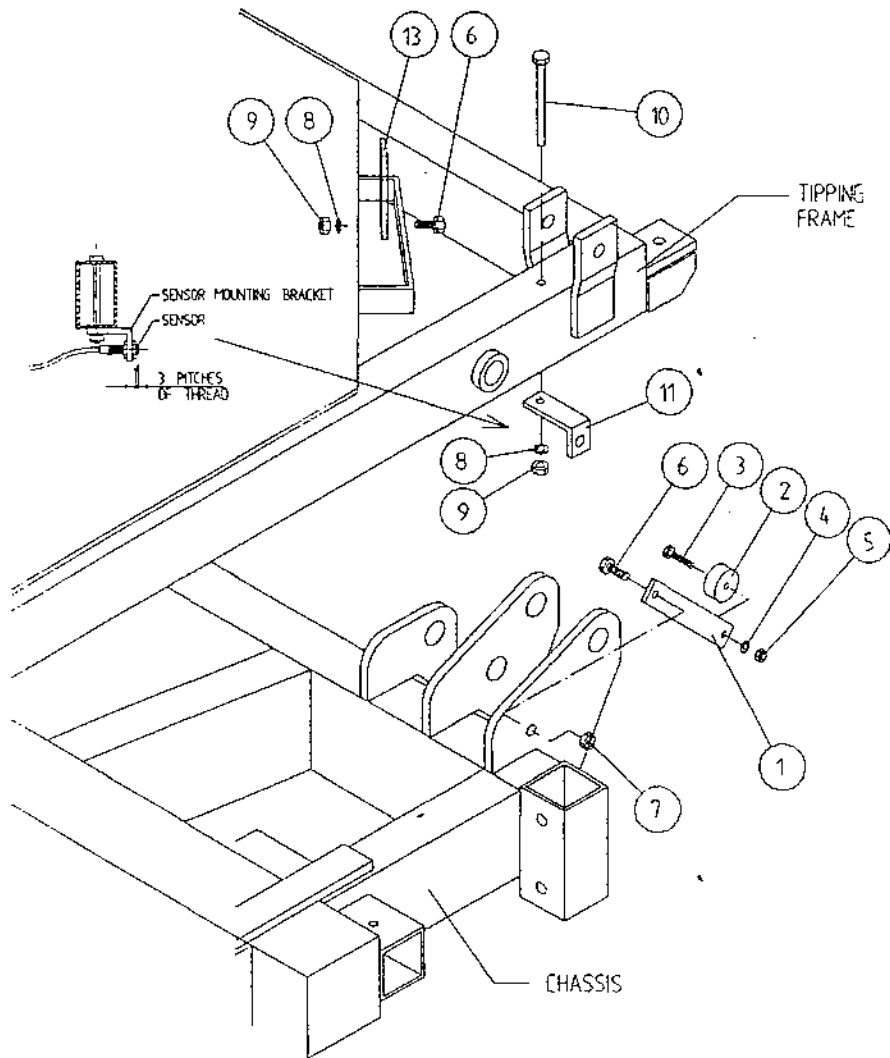
PARTS LIST

| ITEM | DESCRIPTION                | QTY | PART NO  |
|------|----------------------------|-----|----------|
| 1    | UNDERSIDE OF TIPPING FRAME | 1   | WD64-TF  |
| 2    | TURNTABLE CENTRE SHAFT     | 1   | WD64-002 |
| 3    | SPINDLE SPACER             | 1   | WD67-SS  |
| 4    | 1 1/4" UNC HEX NUT         | 1   | Z18-300  |
| 5    | M8 GRUB SCREW X 6MM LONG   | 1   | Z28-007  |



TANCO AUTOWRAP CUT AND START UNIT

SENSOR AND MAGNET MOUNTING BRACKETS



PARTS LIST

| ITEM NO. | DESCRIPTION                | QTY. | PART-NO.  |
|----------|----------------------------|------|-----------|
| 1.       | MAGNET MOUNTING BRACKET    | 1    | WD605-165 |
| 2.       | MAGNET                     | 1    | D6043     |
| 3.       | M6 HEX HD SET x 30mm LONG  | 1    | Z26-022S  |
| 4.       | 6mm DIA FLAT WASHER        | 1    | Z11-02-06 |
| 5.       | M6 LOCKNUT                 | 1    | Z23-06    |
| 6.       | M8 HEX HD SET x 25mm LONG  | 2    | Z26-040S  |
| 7.       | M8 LOCKNUT (NYLOCK)        | 1    | Z23-08    |
| 8.       | 8mm DIA SPRING WASHER      | 2    | Z12-02-08 |
| 9.       | M8 HEX NUT                 | 2    | Z18-08    |
| 10.      | M8 HEX HD SET x 100mm LONG | 1    | Z26-057S  |
| 11.      | SENSOR MOUNTING BRACKET    | 1    | WD605-58  |
| 12.      | SENSOR MOUNTING FLAT       | 1    | WD605-164 |

# EC DECLARATION OF CONFORMITY

ACCORDING TO DIRECTIVES 89/392/336/EEC AS AMENDED.

**MANUFACTURER:** TANCO ENGINEERING CO LTD  
BAGENALSTOWN  
CO CARLOW  
IRELAND

**CERTIFIES THAT THE FOLLOWING PRODUCT:**

AUTOWRAP

MODEL: 550-S / 550-A

SERIAL NO.: D2600 - D5000

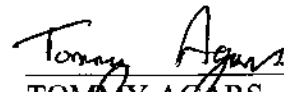
To which this declaration relates, corresponds to the essential requirements of the Directive 89/392/336/EEC as amended.

To conform to these essential health and safety requirements, the provisions of the following harmonised standards were particularly considered:

EN 292 - 1,2, EN 294, EN 1152, prEN 703, prEN 811, prEN 1553, prEN 982.

**DATE:** 01/01/98

**SIGNATURE:**

  
\_\_\_\_\_  
TOMMY AGARS  
TECHNICAL MANAGER