

TANCO AUTOWRAP

200SL MODEL 1994

**OPERATORS HANDBOOK
AND
PARTS LIST
WD65-200-SL-M0594**

Bale Wrap Controller:

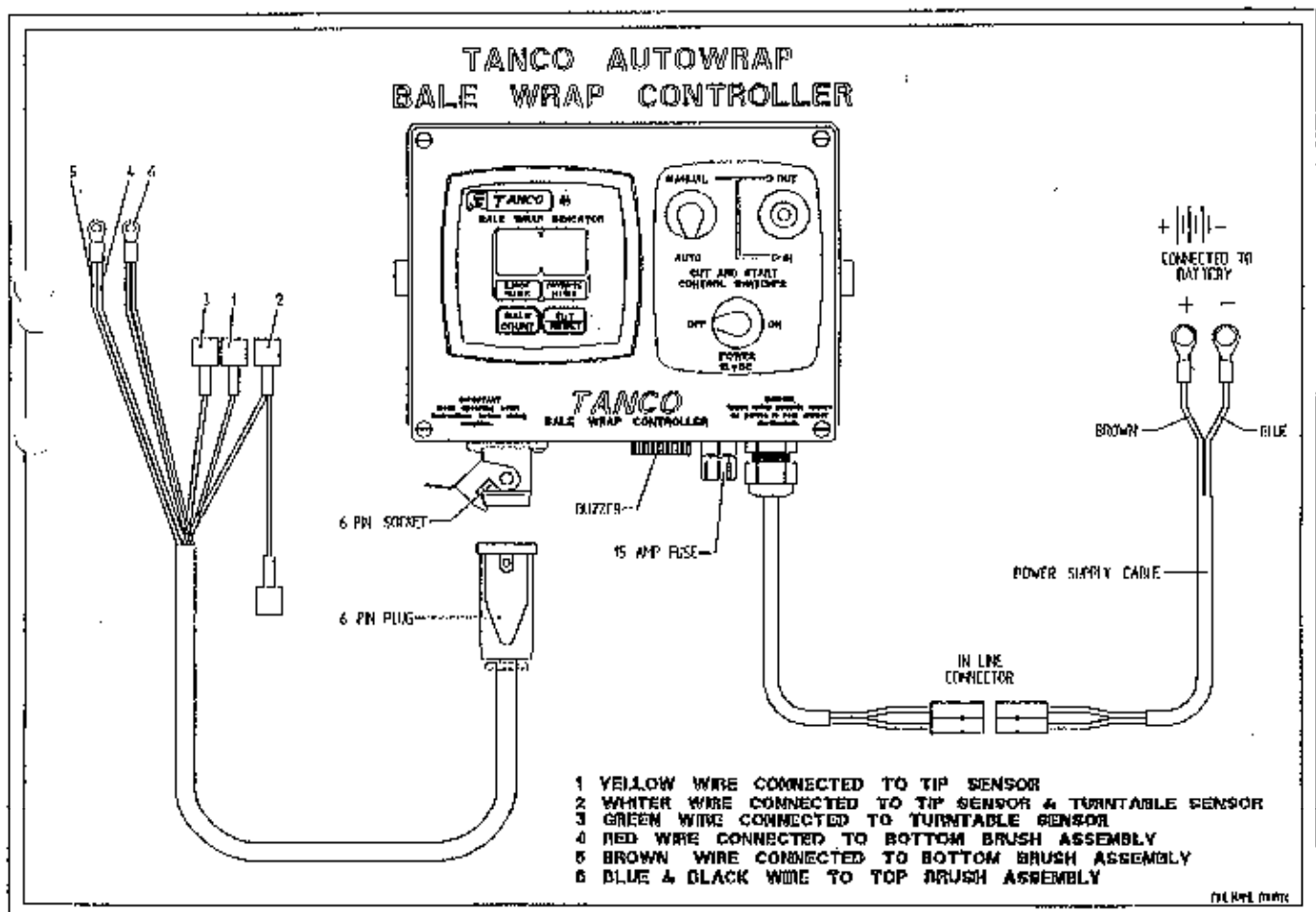
Connect direct to battery as per operating instructions and switch on. The programming of the Automatic Bale Wrap Controller is easily done by following the steps outlined below:

Once the unit is switched on, the number of required turntable revolutions appears on the right hand display. To change this press and hold the "hold to set" button, see fig. 1, then press the "set/reset" button. The first digit of the number will then blink and count from 0-9. Release the "set/reset" button at the required number. By pressing the "set/reset" again the second digit can be changed.

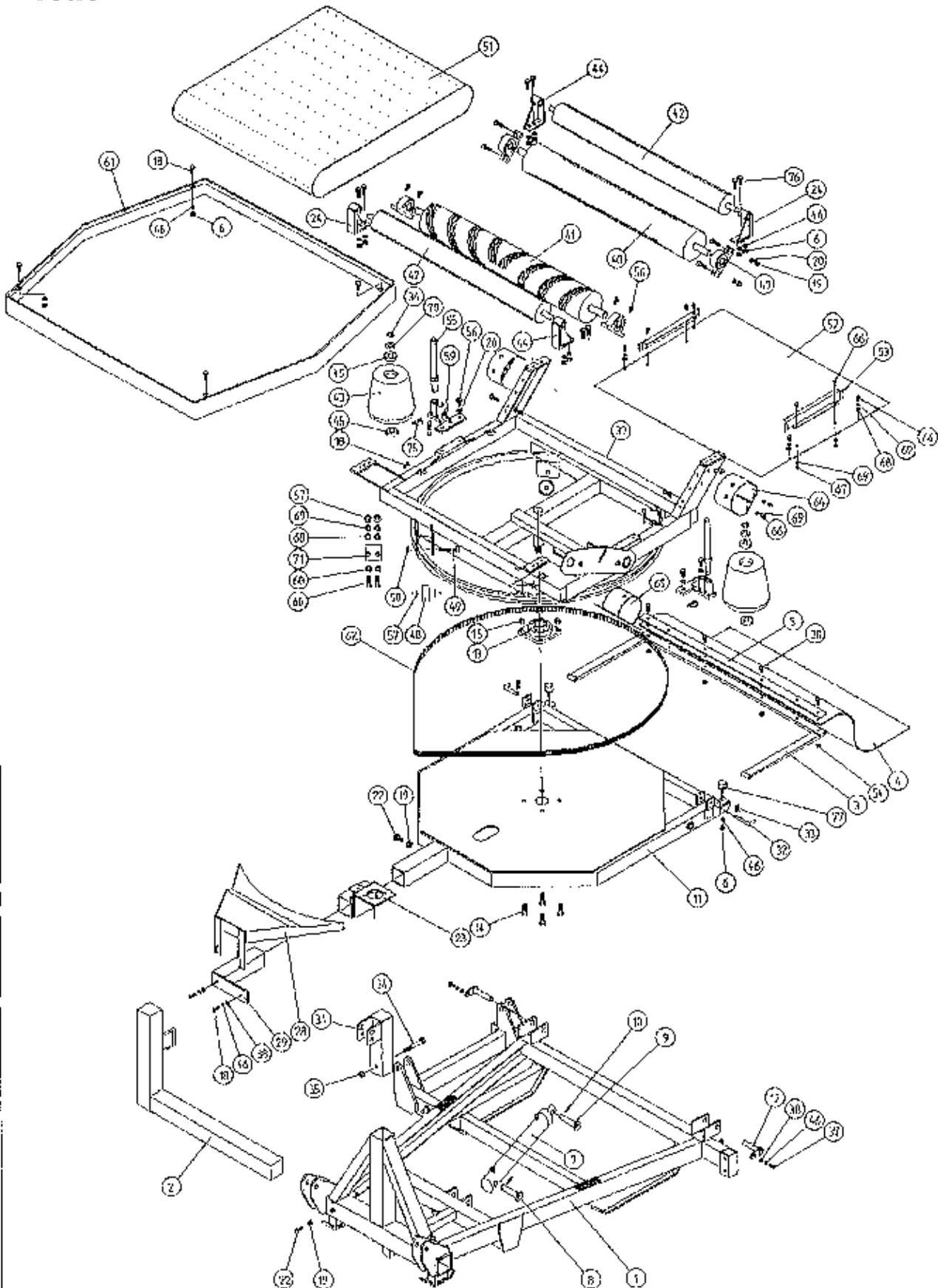
The monitor counts the number of bales per batch and the cumulative total. To see these, press the "bale count" button. The first number to appear is the batch total. If the button is held down for 10 seconds, a line will appear on the display, followed by the cumulative number wrapped. The batch count can be reset to 0 by holding the "bale count" button down and pressing the "set/reset" once. The cumulative total cannot be returned to zero.

To enable you to understand how the controller works, here is a brief resume of its functions.

- (1) After two revolutions of the turntable the actuator pushed open the Cut and Start, this action takes 8.5 secs until the latch engages, then after 6 revolutions of the turntable the actuator closes for a period of 5.5 seconds and stops in the rest position. When the turntable is tipped, the magnet operates the sensor which activates the linear actuator which closes fully and in doing so, trips the latch releasing the gripper arm which slams closed under the spring pressure, cutting the film and, at the same time gripping the film for the next bale



TANCO AUTOWRAP 200 SL/200 AL MODEL 1994



WD63-PL17

TANCO AUTOWRAP 200SL/200AL MODEL (3PT. LINKAGE) 1994PARTS LIST

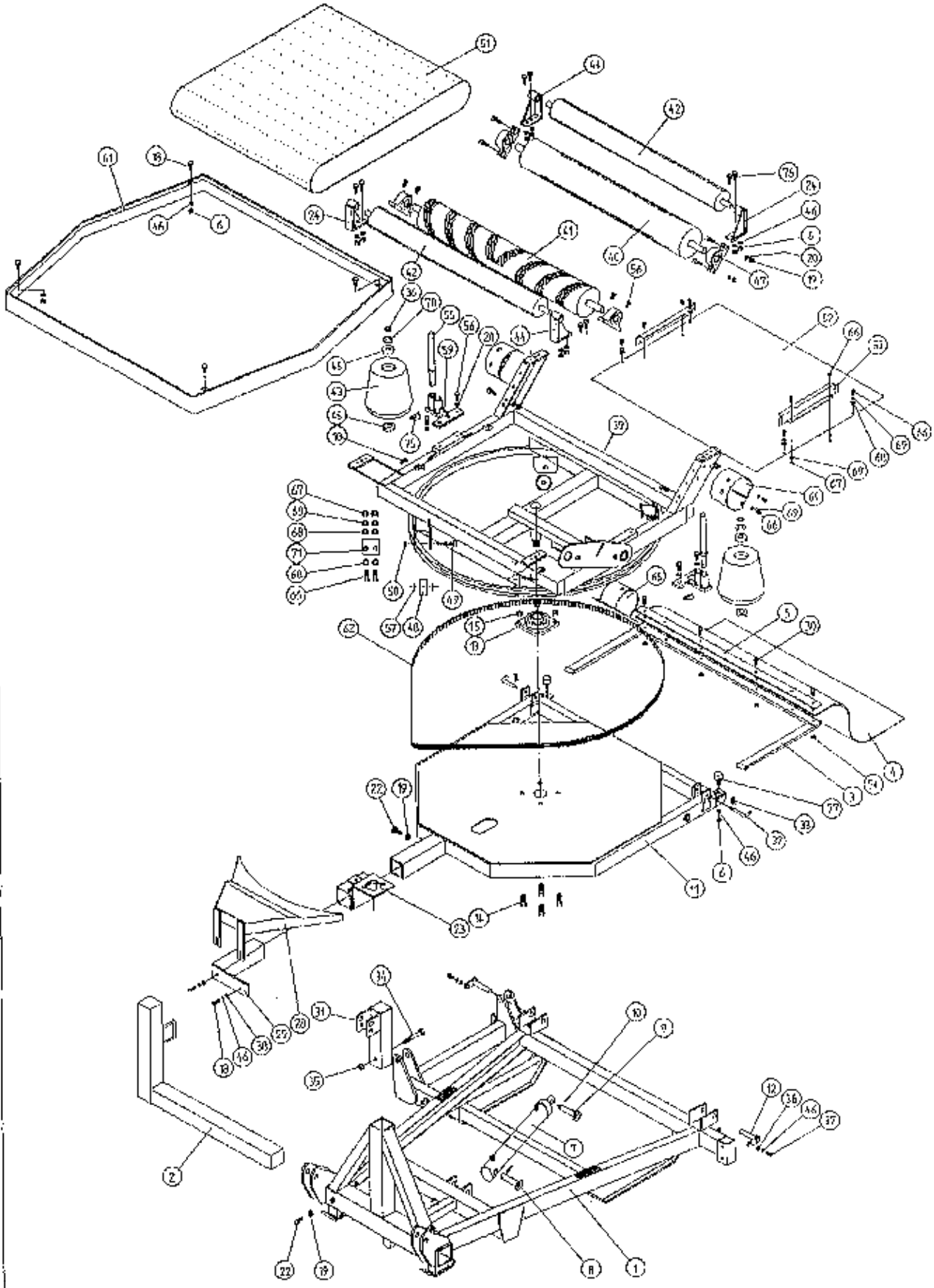
ITEM NO.	DESCRIPTION	QTY.	PART-NO.
1.	3PT. LINKAGE FRAME ASSEMBLY	1	WD63-MFSL
2.	DISPENSER BRACKET LOWER SUPPORT	1	WD63-DMLH
3.	RUBBER MAT MOUNTING FRAME ASSEMBLY	1	WD63-MMF
4.	RUBBER MAT	1	Z05-02AWM
5.	CLAMPING PLATE	1	WD63-1300
6.	M10 HEX NUT	18	Z18-10
7.	HYD. RAM	1	Z01-01-AR687
8.	RAM BOTTOM PIVOT PIN	1	Z03-02-330
9.	RAM TOP PIVOT PIN	1	Z03-03-50
10.	2" x 1/4" SPLIT PIN	2	Z03-21-29
11.	TIPPING FRAME ASSY.	1	WD60-TFC
12.	TIPPING FRAME PIVOT C/W GREASE NIPPLE	2	Z03-01-905 Z39-60
13.	2" DIA FLANGE BEARING C/W CAM LOCK COLLAR	1	Z06-49EC
14.	5/8" UNF HEX HD. SET x 2" LONG	4	Z31B-064
15.	5/8" UNF LOCKNUTS	4	Z20-10
18.	M10 HEX HD SET x 30mm LONG	11	Z26-062S
19.	M12 HEX NUT	9	Z18-12
20.	12mm DIA SPRING WASHER	12	Z12-02-12
22.	M12 HEX HD SETS x 30mm LONG	1	Z26-082S
23.	HYD. MOTOR MOUNTING ASSY.	1	WD60-HMB
24.	ROLLER MOUNTING BRACKET	2	WD60-TRMBL
28.	HYD. MOTOR GUARD ASSY.	1	WD60-HMG
29.	HYDRAULIC MOTOR GUARD MOUNTING BRACKET	1	WD60-HAMB
30.	M8 HEX HD BOLT x 50mm LONG	4	Z26-045B
31.	TOP LINK BRACKET ASSEMBLY	1	WD63-TLB
32.	BISSEL PIN	2	Z03-22-AW100
33.	4mm "R" CLIP	2	Z36-02
34.	M16 HEX HD BOLT x 120mm LONG	1	Z26-134B
35.	M16 LOCKNUTS	1	Z23-16
36.	CIRCLIP	2	Z28-525
37.	M10 HEX HD. SET x 25mm LONG (TUFLOCK)	2	Z26-061S
38.	10mm DIA MACHINED FLAT WASHER	4	Z11-02-10
39.	TURN TABLE ASSY.	1	WD60-TAC
40.	BIG ROLLER ASSY IDLER	1	WD65-BRI
41.	BIG ROLLER ASSY. DRIVER	1	WD65-BRD
42.	SMALL ROLLER ASSY.	2	WD60-SMR
43.	SIDE ROLLER	2	Z06-AWR
44.	ROLLER MTG. BRACKET	2	WD60-TRMBR
45.	BEARING (25MM I.D.)	4	Z06-AWR-93
46.	10mm DIA SPRING WASHERS	23	Z12-02-10
47.	1 1/4" PILLOW BLOCK BEARING C/W CAM COLLAR	4	Z06-485

WD63-PL17

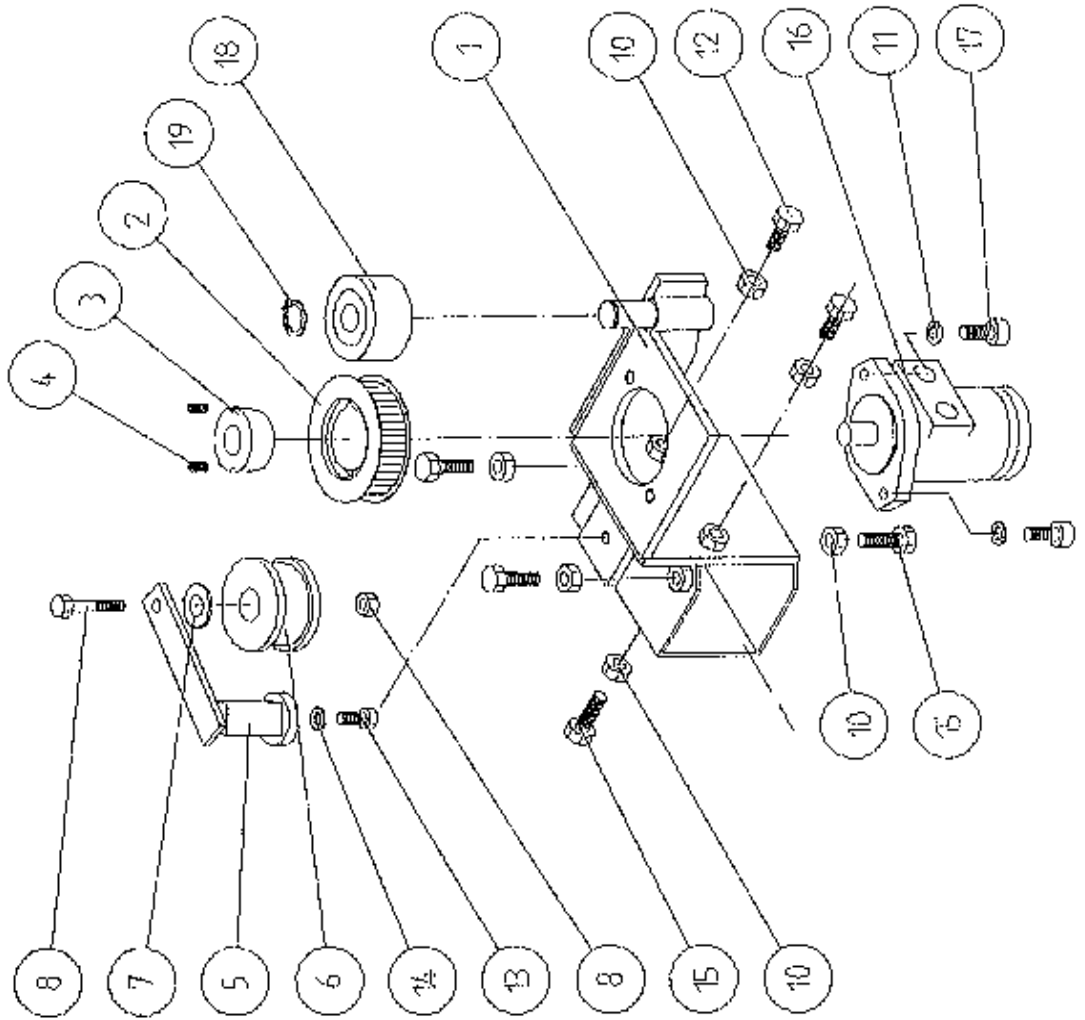
TANCO AUTOWRAP 200SL/200AL MODEL (3PT. LINKAGE) 1994
PARTS LIST

48.	SUPPORT WHEELS (4" DIA)	4	Z06-466
49.	AXLE ASSY. C/W GREASE NIPPLE	4	Z03-22-AW/AX Z39-60
50.	M20 LOCKNUTS	4	Z23-20
51.	1 METER WIDE x 89 1/2" LONG X 1/4" FLAT BELT	1	Z05-02AWV
52.	TURN TABLE COVER PLATE	1	WD60-093
53.	BELT GUIDE ASSY.	2	WD625-BG.
54.	M8 LOCKNUTS	4	Z23-08
55.	ROLLER SHAFT ASSEMBLY	2	WD60-RSA
56.	M12 HEX HD. SETS x 40mm LONG	12	Z26-084S
57.	SPACER	8	WD60-198
58.	1/8" B.S.P. ST GREASE NIPPLE	4	Z39-60
59.	END ROLLER MOUNTING BRACKET	2	WD60-ERM
61.	MAIN GUARD ASSY.	1	WD60-MG
62.	170" LONG X 1/2 PITCH X 1" WIDE TOOTHED BELT	1	Z05-02-AW20
64.	GRASS GUARD (CLOSED TYPE)	3	Z49-98
65.	GRASS GUARD (OPEN TYPE)	1	Z49-981
66.	M8 HEX HD SETS x 20mm LONG	20	Z26-039S
67.	M8 HEX NUTS	14	Z18-08
68.	8mm DIA FLAT WASHERS (MUD FLAP)	20	Z11-02-081
69.	8MM DIA SPRING WASHERS	20	Z12-02-08
70.	THRUST WASHER	2	WD60-292
71.	SCRAPER	2	WD60-705
75.	10mm "D" LINCH PIN	2	Z38-03
76.	M10 HEX HD SET x 35mm LONG	8	Z26-063S
77.	BUFFER 56mm DIA x 40mm LONG	2	Z40-20

TANCO AUTOWRAP 200 SL/200 AL MODEL 1994



TANCO AUTOWRAP 1994 MODEL
HYDRAULIC MOTOR DRIVE ASSEMBLY



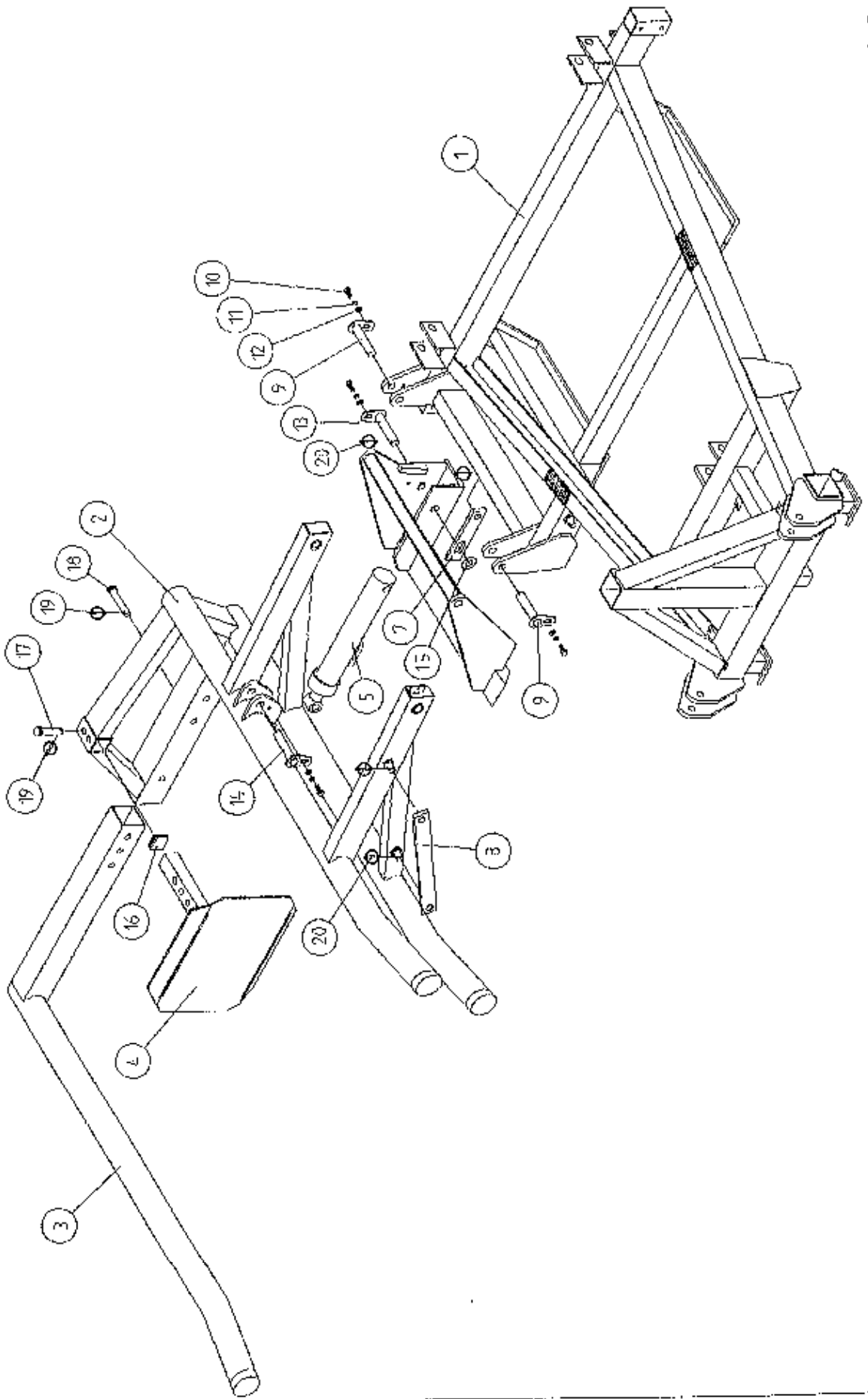
WD60-PL27

TANCO AUTOWRAP 1994 MODEL
HYDRAULIC MOTOR DRIVE ASSEMBLY

PARTS LIST

ITEM NO.	DESCRIPTION	QTY.	PART-NO.
1.	HYDRAULIC MOTOR MOUNTING ASSY.	1	WD65-HMB
2.	4" DIA X 1/2" PITCH TOOTHED PULLY	1	Z09-005-AW1
3.	TAPER LOCK BUSH TO SUIT 1" DIA SHAFT	1	Z09-005-AW2
4.	M10 STUDS X 15MM	2	Z28-01
5.	ROSTA TENSIONING UNIT ARM	1	Z06-454
6.	STEPPED ROLLER C/W BEARINGS	1	Z06-456
7.	SPACER	1	WD60-798
8.	M10 HEX HD BOLT X 60MM LONG	1	Z26-067B
9.	M10 LOCKNUT	1	Z23-10
10.	M12 HEX NUT	6	Z18-12
11.	12MM DIA SPRING WASHER	2	Z12-02-12
12.	M12 HEX HD SET X 30MM LONG	2	Z26-082S
13.	M10 HEX HD SET X 25MM LONG (TUFLOCK)	1	Z26-061S
14.	10MM DIA SPRING WASHER	1	Z12-02-10
15.	M12 HEX HD SET X 40MM LONG	6	Z26-084S
16.	HYDRAULIC MOTOR C.L.	1	Z01-02-AR75
17.	M12 SOCKET HD SCREW X 30MM LONG	2	Z13-6-12X30
18.	ROLLER C/W BEARINGS	1	Z06-457
19.	CIRCLIP	1	Z28-525

TANCO AUTOWRAP 200 SL / 200 AL MODEL
LIFT ARM AND STABILISER ASSEMBLY

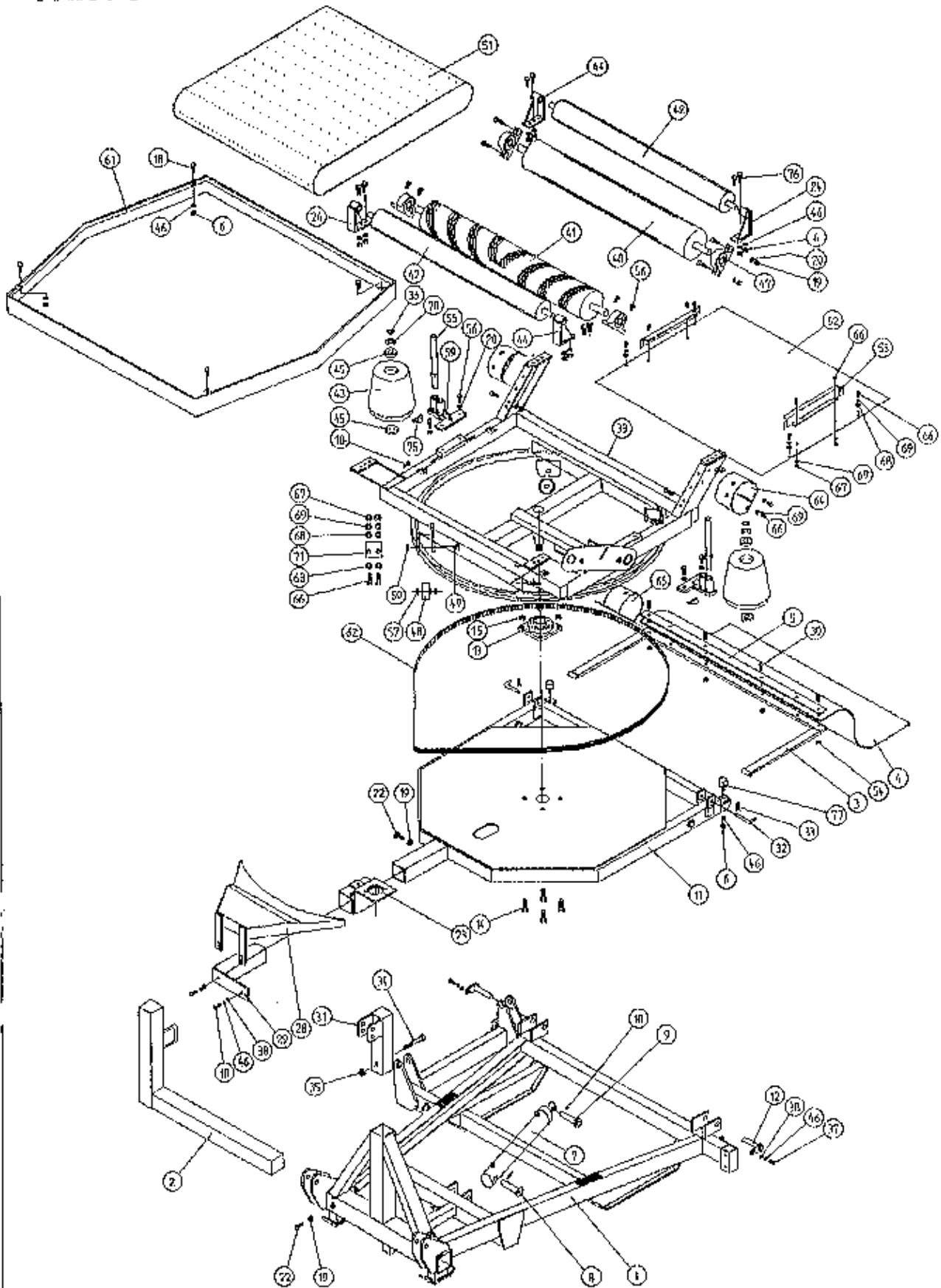


TANCO AUTOWRAP 200SL / 200AL MODELS
LIFT ARM AND STABILISER ASSEMBLY

PARTS LIST

ITEM NO.	DESCRIPTION	QTY.	PART-NO.
1.	3PT LINKAGE MAIN FRAME	1	WD63-MFSL
2.	LIFT ARM ASSY	1	WD63-LA
3.	ADJUSTABLE OUTER ARM ASSY	1	WD63-LAAA
4.	ADJUSTABLE BALE STOP	1	WD610-LAS
5.	HYDRAULIC RAM	1	Z01-01-AW200
6.	STABILISING LEG ASSY	1	WD63-LASL
7.	STAY (SHORT)	1	WD63-1426
8.	STAY (LONG)	1	WD63-1418
9.	LIFT ARM PIVOT PIN C/W GREASE NIPPLE	2	Z03-01-796
10.	M10 HEX HD SET x 25MM LONG (TUFLOCK)	4	Z26-061S
11.	10mm DIA SPRING WASHER	4	Z12-02-10
12.	10mm DIA FLAT WASHER	4	Z11-02-10
13.	RAM BOTTOM PIVOT PIN C/W GREASE NIPPLE	1	Z03-02-192
14.	RAM TOP PIVOT PIN C/W GREASE NIPPLE	1	Z03-01-797
15.	1" DIA HEAVY DUTY FLAT WASHER	1	Z11-02-25
16.	PLASTIC CAP	1	Z32-10
17.	SPAREX PIN	1	Z03-04-73
18.	SPAREX PIN	1	Z03-04-77
19.	7/16" DIA LINCH PINS	2	Z03-22-06
20.	6mm DIA LINCH PINS	4	Z03-22-03

TANCO AUTOWRAP 200 SL/200 AL MODEL 1994

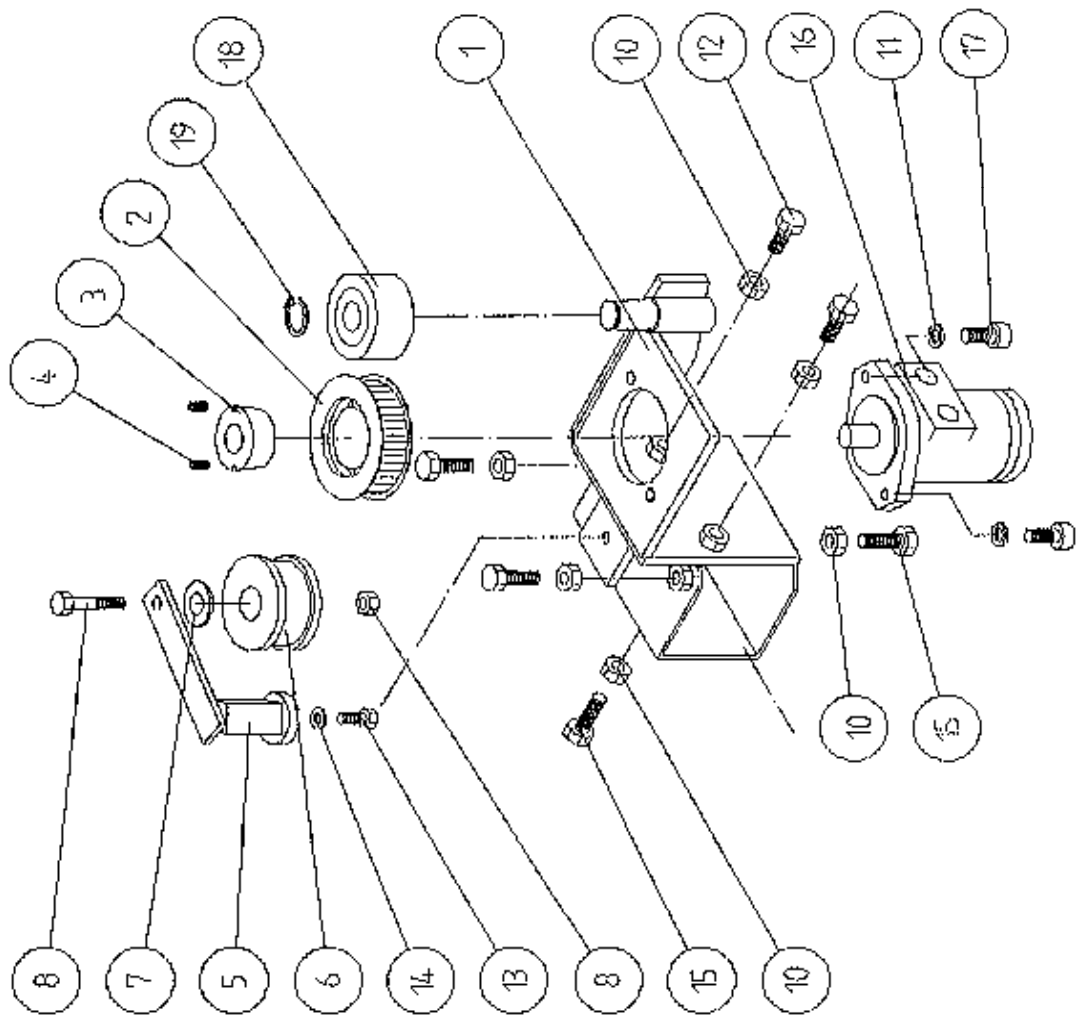


WD63-PL17

TANCO AUTOWRAP 200SL/200AL MODEL (3PT. LINKAGE) 1994
PARTS LIST

48.	SUPPORT WHEELS (4" DIA)	4	Z06-466
49.	AXLE ASSY. C/W GREASE NIPPLE	4	Z03-22-AW/AX Z39-60
50.	M20 LOCKNUTS	4	Z23-20
51.	1 METER WIDE x 89 1/2" LONG X 1/4" FLAT BELT	1	Z05-02AWV
52.	TURN TABLE COVER PLATE	1	WD60-093
53.	BELT GUIDE ASSY.	2	WD625-BG.
54.	M8 LOCKNUTS	4	Z23-08
55.	ROLLER SHAFT ASSEMBLY	2	WD60-RSA
56.	M12 HEX HD. SETS x 40mm LONG	12	Z26-084S
57.	SPACER	8	WD60-198
58.	1/8" B.S.P. ST GREASE NIPPLE	4	Z39-60
59.	END ROLLER MOUNTING BRACKET	2	WD60-ERM
61.	MAIN GUARD ASSY.	1	WD60-MG
62.	170" LONG X 1/2 PITCH X 1" WIDE TOOTHED BELT	1	Z05-02-AW20
64.	GRASS GUARD (CLOSED TYPE)	3	Z49-98
65.	GRASS GUARD (OPEN TYPE)	1	Z49-981
66.	M8 HEX HD SETS x 20mm LONG	20	Z26-039S
67.	M8 HEX NUTS	14	Z18-08
68.	8mm DIA FLAT WASHERS (MUD FLAP)	20	Z11-02-081
69.	8MM DIA SPRING WASHERS	20	Z12-02-08
70.	THRUST WASHER	2	WD60-292
71.	SCRAPER	2	WD60-705
75.	10mm "D" LINCH PIN	2	Z38-03
76.	M10 HEX HD SET x 35mm LONG	8	Z26-063S
77.	BUFFER 56mm DIA x 40mm LONG	2	Z40-20

TANCO AUTOWRAP 1994 MODEL
HYDRAULIC MOTOR DRIVE ASSEMBLY

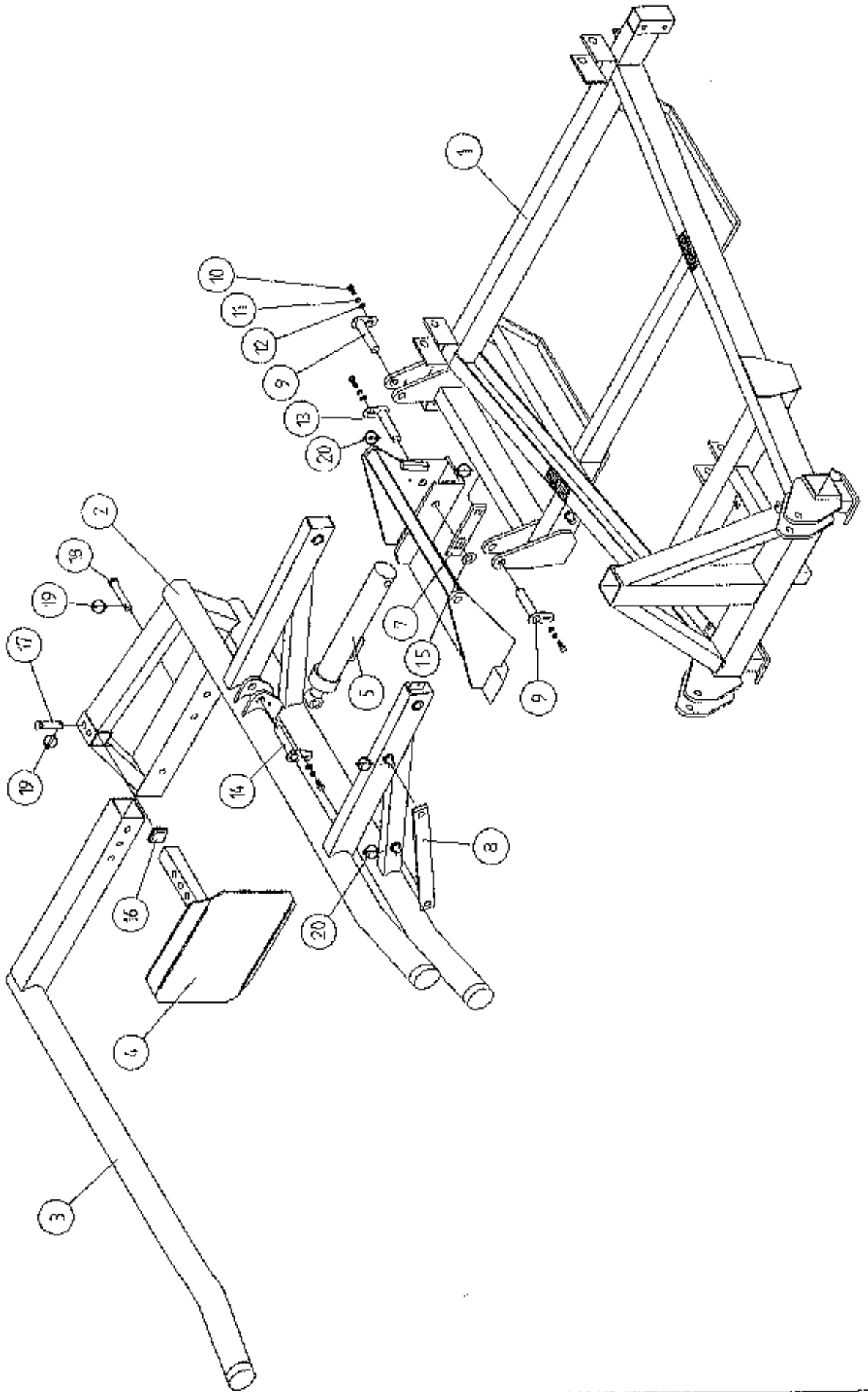


TANCO AUTOWRAP 1994 MODEL
HYDRAULIC MOTOR DRIVE ASSEMBLY

PARTS LIST

ITEM NO.	DESCRIPTION	QTY.	PART-NO.
1.	HYDRAULIC MOTOR MOUNTING ASSY.	1	WD65-HMB
2.	4" DIA X 1/2" PITCH TOOTHED PULLY	1	Z09-005-AW1
3.	TAPER LOCK BUSH TO SUIT 1" DIA SHAFT	1	Z09-005-AW2
4.	M10 STUDS X 15MM	2	Z28-01
5.	ROSTA TENSIONING UNIT ARM	1	Z06-454
6.	STEPPED ROLLER C/W BEARINGS	1	Z06-456
7.	SPACER	1	WD60-798
8.	M10 HEX HD BOLT X 60MM LONG	1	Z26-067B
9.	M10 LOCKNUT	1	Z23-10
10.	M12 HEX NUT	6	Z18-12
11.	12MM DIA SPRING WASHER	2	Z12-02-12
12.	M12 HEX HD SET X 30MM LONG	2	Z26-082S
13.	M10 HEX HD SET X 25MM LONG (TUFLOCK)	1	Z26-061S
14.	10MM DIA SPRING WASHER	1	Z12-02-10
15.	M12 HEX HD SET X 40MM LONG	6	Z26-084S
16.	HYDRAULIC MOTOR C.L.	1	Z01-02-AR75
17.	M12 SOCKET HD SCREW X 30MM LONG	2	Z13-6-12X30
18.	ROLLER C/W BEARINGS	1	Z06-457
19.	CIRCLIP	1	Z28-525

TANCO AUTOWRAP 200 SL / 200 AL MODEL
LIFT ARM AND STABILISER ASSEMBLY

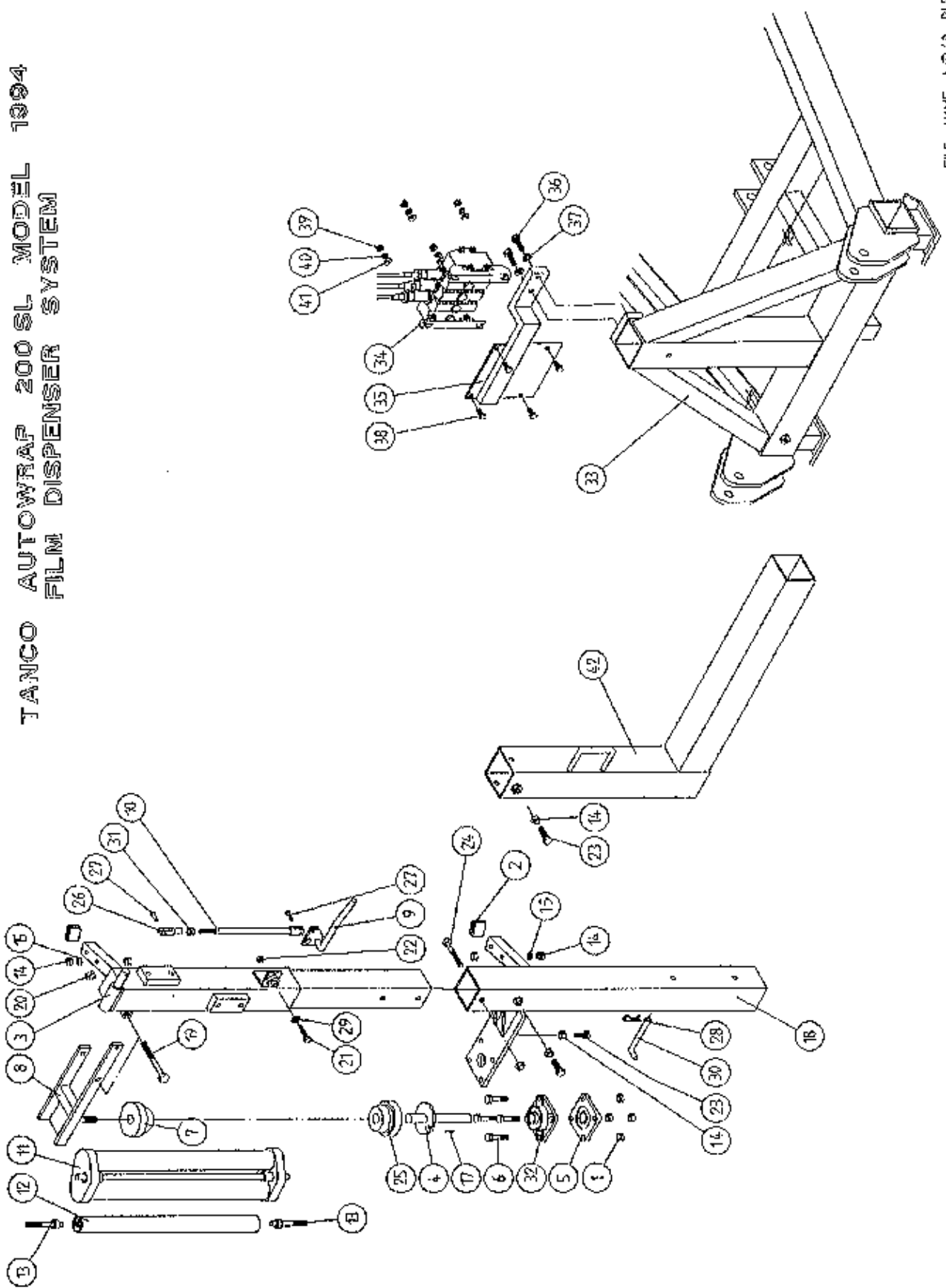


TANCO AUTOWRAP 200SL / 200AL MODELS
LIFT ARM AND STABILISER ASSEMBLY

PARTS LIST

ITEM NO.	DESCRIPTION	QTY.	PART-NO.
1.	3PT LINKAGE MAIN FRAME	1	WD63-MFSL
2.	LIFT ARM ASSY	1	WD63-LA
3.	ADJUSTABLE OUTER ARM ASSY	1	WD63-LAAA
4.	ADJUSTABLE BALE STOP	1	WD610-LAS
5.	HYDRAULIC RAM	1	Z01-01-AW200
6.	STABILISING LEG ASSY	1	WD63-LASL
7.	STAY (SHORT)	1	WD63-1426
8.	STAY (LONG)	1	WD63-1418
9.	LIFT ARM PIVOT PIN C/W GREASE NIPPLE	2	Z03-01-796
10.	M10 HEX HD SET x 25MM LONG (TUFLOCK)	4	Z26-061S
11.	10mm DIA SPRING WASHER	4	Z12-02-10
12.	10mm DIA FLAT WASHER	4	Z11-02-10
13.	RAM BOTTOM PIVOT PIN C/W GREASE NIPPLE	1	Z03-02-192
14.	RAM TOP PIVOT PIN C/W GREASE NIPPLE	1	Z03-01-797
15.	1" DIA HEAVY DUTY FLAT WASHER	1	Z11-02-25
16.	PLASTIC CAP	1	Z32-10
17.	SPAREX PIN	1	Z03-04-73
18.	SPAREX PIN	1	Z03-04-77
19.	7/16" DIA LINCH PINS	2	Z03-22-06
20.	6mm DIA LINCH PINS	4	Z03-22-03

TANCO AUTOWRAP 200 SL MODEL 1994
FILM DISPENSER SYSTEM



TANCO AUTOWRAP 200SL MODEL 1994FILM DISPENSER SYSTEMPARTS LIST

ITEM NO.	DESCRIPTION	QTY.	PART-NO
1.	M10 LOCKNUTS	4	Z23-10
2.	PLASTIC CAPS (TO SUIT 40 X 40 X 30 RHS)	2	Z32-07
3.	DISPENSER MOUNTING (UPPER)	1	WD60-DMUH
4.	FILM SPOOL ASSEMBLY	1	WD60-SPO
5.	1" DIA FLANGE BEARING C/W CAM LOCK	1	Z06-48EC
6.	M10 HEX HD. BOLT X 50mm LONG	4	Z26-066B
7.	CONE (TOP) C/W BALL BEARINGS	1	Z06-45-01
8.	CLAMP ASSEMBLY	1	WD60-DMCA
9.	LEVER ASSEMBLY	1	WD60-DMLA
10.	LINK ASSEMBLY	1	WD60-DMLK
11.	FILM DISPENSER UNIT MK 6 (70% STRETCH)	1	D613
12.	SLAVE ROLLER ASSY (PLASTIC COATED)	1	WD60-SLR
13.	SLAVE ROLLER PIVOT	2	WD60-253
14.	M12 HEX NUTS	7	Z18-12
15.	12mm DIA SPRING WASHER	2	Z12-02-12
16.	SPOOL VALVE MOUNTING PLATE ASSEMBLY	3	WD63-SVM
17.	1/4" DIA TENSION PIN X 3/4" LONG	1	Z03-20-062
18.	DISPENSER MOUNTING (LOWER)	1	WD60-DMLH
19.	M12 HEX HD BOLT X 130mm LONG	1	Z26-094B
20.	M12 LOCKNUT	3	Z23-12
21.	M8 HEX HD BOLT X 35mm LONG	1	Z26-042S
22.	M8 LOCKNUT	1	Z23-08
23.	M12 HEX HD SET X 30mm LONG	3	Z26-082S
24.	M12 HEX HD BOLT X 100mm LONG	1	Z26-092B
25.	CONE (BOTTOM)	1	Z06-45-02
26.	CLEVIS (M10)	1	Z49-335
27.	PIN (5/16" DIA) C/W CLIP	2	Z49-337
28.	4mm "R" CLIP	1	Z36-02
29.	8mm DIA MUD FLAP WASHER	1	Z11-02-081
30.	BISSEL PIN X 110mm LONG	1	WD60-874
31.	5/16" UNF HEX NUT	1	Z15-05
32.	1" DIA FLANGE BEARING	1	Z06-48
33.	3PT. LINKAGE FRAME	1	WD63-MF
34.	3 BANK SPOOL VALVE (DIN)	1	Z01-03-018D
35.	SPOOL VALVE MOUNTING BRACKET	1	WD63-SVM
36.	M10 HEX HD SET X 35mm LONG	2	Z26-063S
37.	10mm DIA SPING WASHER	2	Z12-02-10
38.	M8 HEX HD SET X 20mm LONG	4	Z26-039S
39.	M8 HEX NUT	4	Z18-08
40.	8mm DIA SPRING WASHER	4	Z12-02-08
41.	8mm DIA MUD FLAP WASHER	4	Z11-02-081
42.	DISPENSER BRACKET LOWER SUPPORT	1	WD63-DMLH

FAULT FINDING

PROBLEMS.

1. Drive Belt Slipping on Drive. Tension belt with Automatic tension set to 25 - 30 degrees - see page 8. Check belt is correct pitch if it has been replaced.
2. Drive belt breaking and bottom or Top Rim coming off motor sprocket. Check that cross line relief valve is working on motor. Check motor mount for alignment. Reduce tension on Drive Belt. Check there is no vertical movement of turntable spindle - if so tighten bearing locking screws on spindle and ensure that collar is secure on spindle below bearing.
3. Film Breaking Wash off dispenser and slave rollers Change roll of film. Use recommended films only.
4. Film not wrapping evenly on bale. Adjust film mast so centre of film roll is aligned with centre of bale .
5. Film Tearing on Ramp. Check for sharp edges and remove.
6. Bale Skidding on Ramp. Fit Hessian Bag or piece of carpet to Ramp.
7. Film Dispenser not Pre-Stretching Film. Check that both Rollers turn when one is turned by hand. If not, fit new gears or replace unit.
8. Tyres coming off 4" platform Support Wheels. Replace Wheels - Reduce speed below 25 r.p.m. - Do not oil or grease path of wheels on platform.

FAULT FINDING

PROBLEMS

9. MAIN BELT MOVING SIDEWAYS

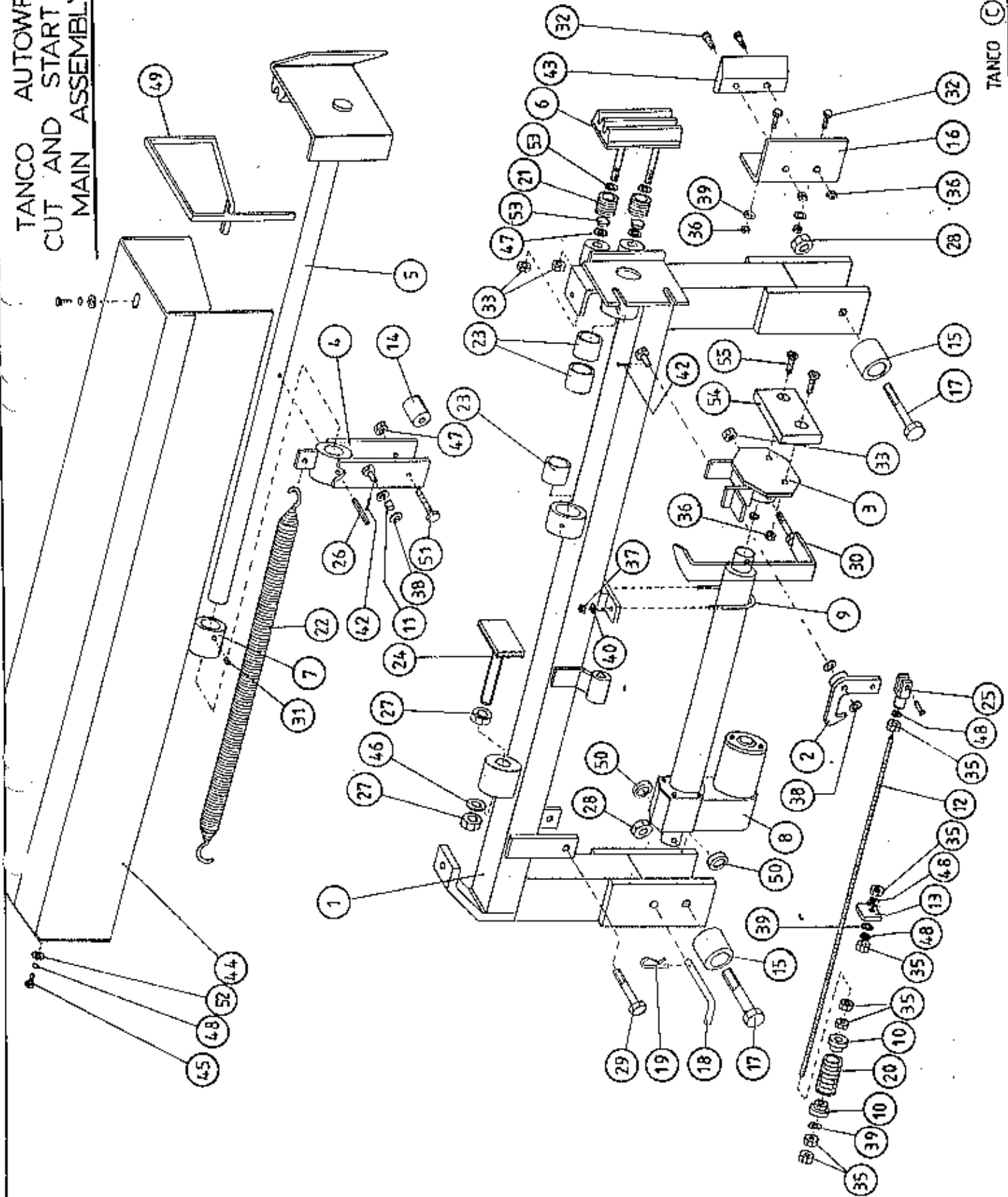
- (i) Ensure vertical rollers (plastic) are tight on the bale. Remember that the bale will reduce in size during wrapping and, on the round bales in particular, the corners will become rounded so that the bale will tend to move sideways due to centrifugal forces. Now, if the plastic rollers are too far apart, the bale will move against one of the plastic rollers whilst the belt will move in the opposite direction - so adjust the vertical plastic rollers so that they keep the bale central on the belt.
- (ii) Adjust bale stop on lift arm so that bale is loaded centrally onto platform.
- (iii) Check that both 6' rollers underneath the bale belt are running parallel to each other. Remember the golden rule - a belt will always move up a slope, so if the rollers are not parallel to each other then the belt will move to the widest setting.

NOTE:

It is important to adjust the idler roller only, as movement of the drive roller will entail adjusting the chain tension also. It is important to note if the belt moves to the same side all of the time, or if it moves first to the gearbox side and then to the other side. With the round bale wrapper, the belt will tend to move to the same side each time because the bale is always loaded the same way.

- (iv) Check that belt is the same measurement each side by running a string around the belt and measuring it. If one side is longer than the other replace the belt but if both sides are same measurement and all above adjustments fail, the try removing the belt and fitting it round the opposite way.

TANCO AUTOWRAP
 CUT AND START UNIT (1994)
 MAIN ASSEMBLY

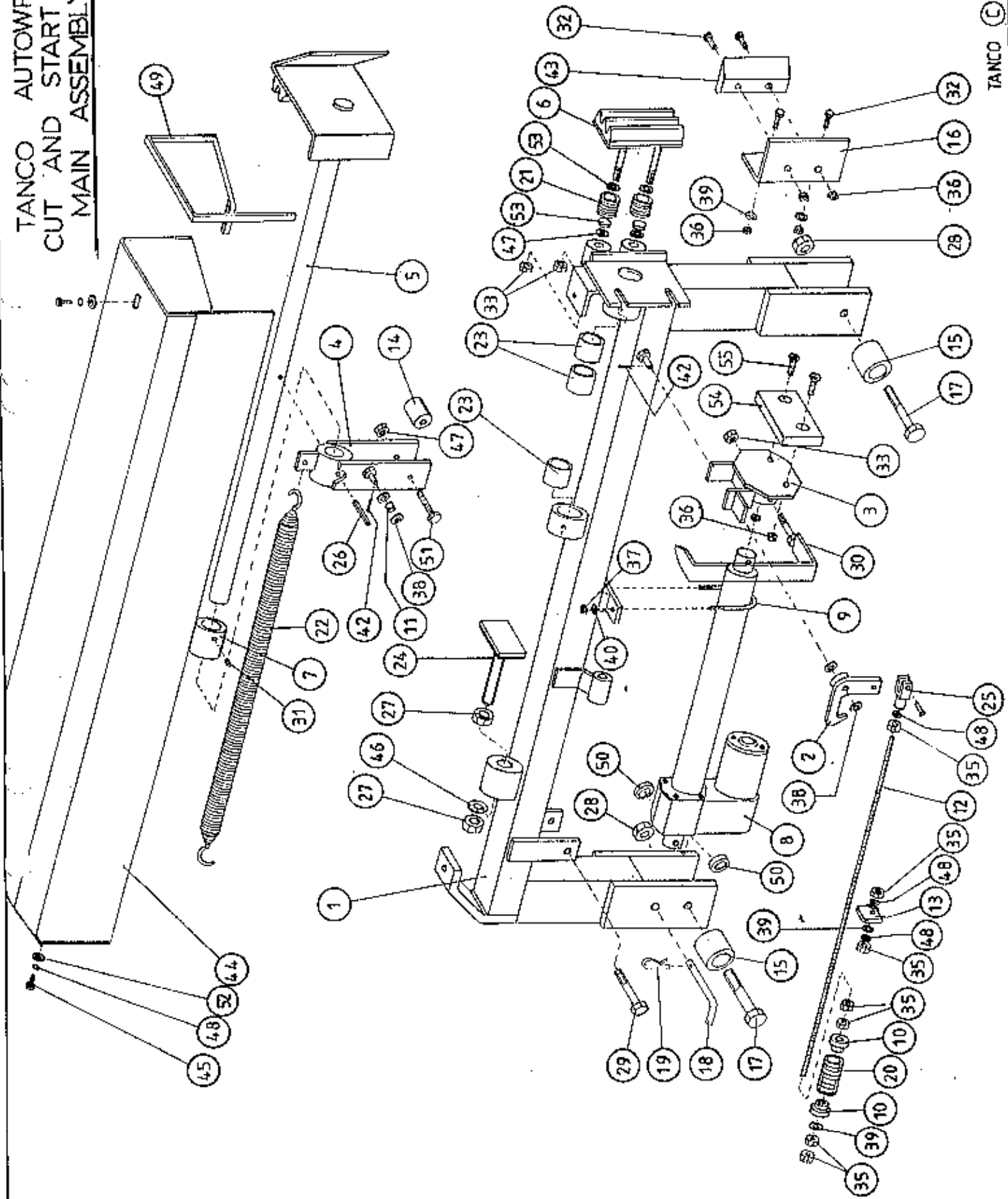


AUTOWRAP

TANCO AUTOWRAP
CUT AND START UNIT (1994)
PARTS LIST

ITEM NO	DESCRIPTION	QTY	PART-NO.
1.	MAIN MOUNTING FRAME ASSY	1	WD605-MF
2.	LATCH ASSY.	1	WD605-LA
3.	PUSH PLATE ASSY.	1	WD605-PP
4.	GUIDE ASSY	1	WD605-GD
5.	PLUNGER ASSY	1	WD605-PL
6.	FILM GRIPPER ASSY	1	WD605-FG
7.	PLUNGER END CAP	1	WD605-90
8.	WARNER LINEAR ACTUATOR D11 10B5 08	1	ZD605-510
9.	"U" BOLT	1	WD605-45
10.	STEPPED COLLAR	2	WD605-46
11.	SLEEVE 1/2" DIA O.D. X 13/32" DIA I.D.	1	WD605-47
12.	THREADED ROUND 5/16" UNF	1	WD605-48
13.	TRIGGER	1	WD605-50
14.	COLLAR 1" DIA BRIGHT RD. X 41.5MM LONG	1	WD605-51
15.	SPACER	1	WD605-100
16.	BLADE GUARD/MOUNTING BRACKET	1	WD605-105
17.	M12 HEX HD BOLT X 80MM LONG	2	Z26-0901B
18.	BISSEL PIN	1	Z03-22-AW100
19.	4MM "R" CLIP	1	Z36-02
20.	SPRING 16MM O.D. X 1.5MM WIRE X 48MM LONG	1	Z07-34
21.	SPRING 1.09" O.D. X 0.092" WIRE X 1.54" LONG	2	Z07-44
22.	SPRING 1.125 O.D. X 0.125" WIRE X 330MM	1	Z07-46
23.	OILITE OIL RETAINING BUSH 1 1/8" O.D. X 3/4" X 1" L.	3	Z06-105
24.	RUBBER BUFFER ASSY.	1	WD605-BA
25.	CLEVIS C/W PIN	1	Z49-33
26.	1 1/2" X 1/4" DIA TENSION PIN	1	Z03-20-07
27.	M16 HEX NUTS	2	Z18-16
28.	M12 LOCKNUTS	2	Z23-12
29.	M12 HEX HD BOLT X 65MM	1	Z26-0882B
30.	INDICATOR ASSY	1	WD605-PR
31.	M8 GRUB SCREW	1	Z28-008
32.	M8 HEX HD SET X 25MM	4	Z26-040S
33.	M12 BINX LOCKNUT	4	Z23-12BX
35.	5/16" UNF HEX NUT	7	Z15-05
36.	M8 LOCKNUT	9	Z18-08
37.	M6 LOCKNUT (NYLOCK)	2	Z23-16
38.	10MM DIA FLAT WASHER	10	Z11-02-10
39.	8MM DIA FLAT WASHER	5	Z11-02-08
40.	6MM DIA FLAT WASHER	2	Z11-02-06
42.	3MM DIA SPLIT PIN	2	Z03-21-02
43.	BLADE	1	WD605-104
44.	MAIN GUARD	1	WD605-MG
45.	M8 HEX HD SET X 20MM LONG	2	Z26-020S
46.	10MM DIA SPRING WASHER	2	Z12-02-10
47.	12MM DIA FLAT WASHER	2	Z11-02-12
48.	8M DIA SPRING WASHER	9	Z12-02-08
49.	EDGING STRIP	1	Z44-12
50.	SPACER 1" O.D. X 1/2" I.D. X 6MM LONG	2	WD605-65

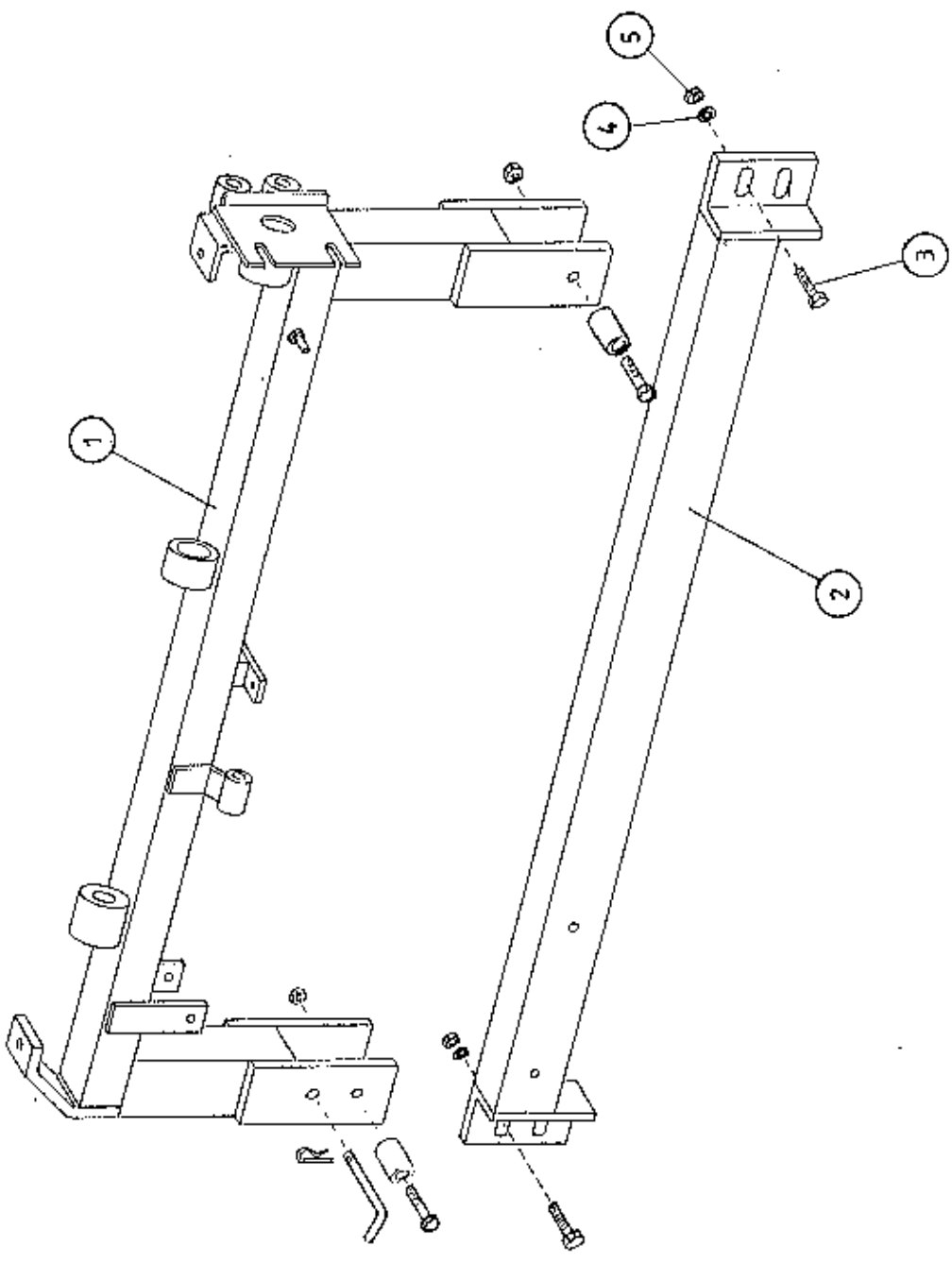
TANCO AUTOWRAP
 CUT AND START UNIT (1996)
 MAIN ASSEMBLY



AUTOWRAP**TANCO AUTOWRAP
CUT AND START UNIT (199)
PARTS LIST**

ITEM NO	DESCRIPTION	QTY	PART-NO.
51.	M10 HEX HDSET X 20MM	2	Z26-060S
52.	8MM DIA FLAT WASHER 1" O.D.	4	Z11-02-081
53.	25MM O.D. X 12MM I.D. FILM GRIP WASHER	4	Z11-02-12FG
54.	PACKER	1	WD605-133
55.	H8 X 40 COUNTER SUNK BOLT	2	Z13-5-08X40

TANCO AUTOWRAP CUT AND START (1994)
MOUNTING FRAME



WD605-MF

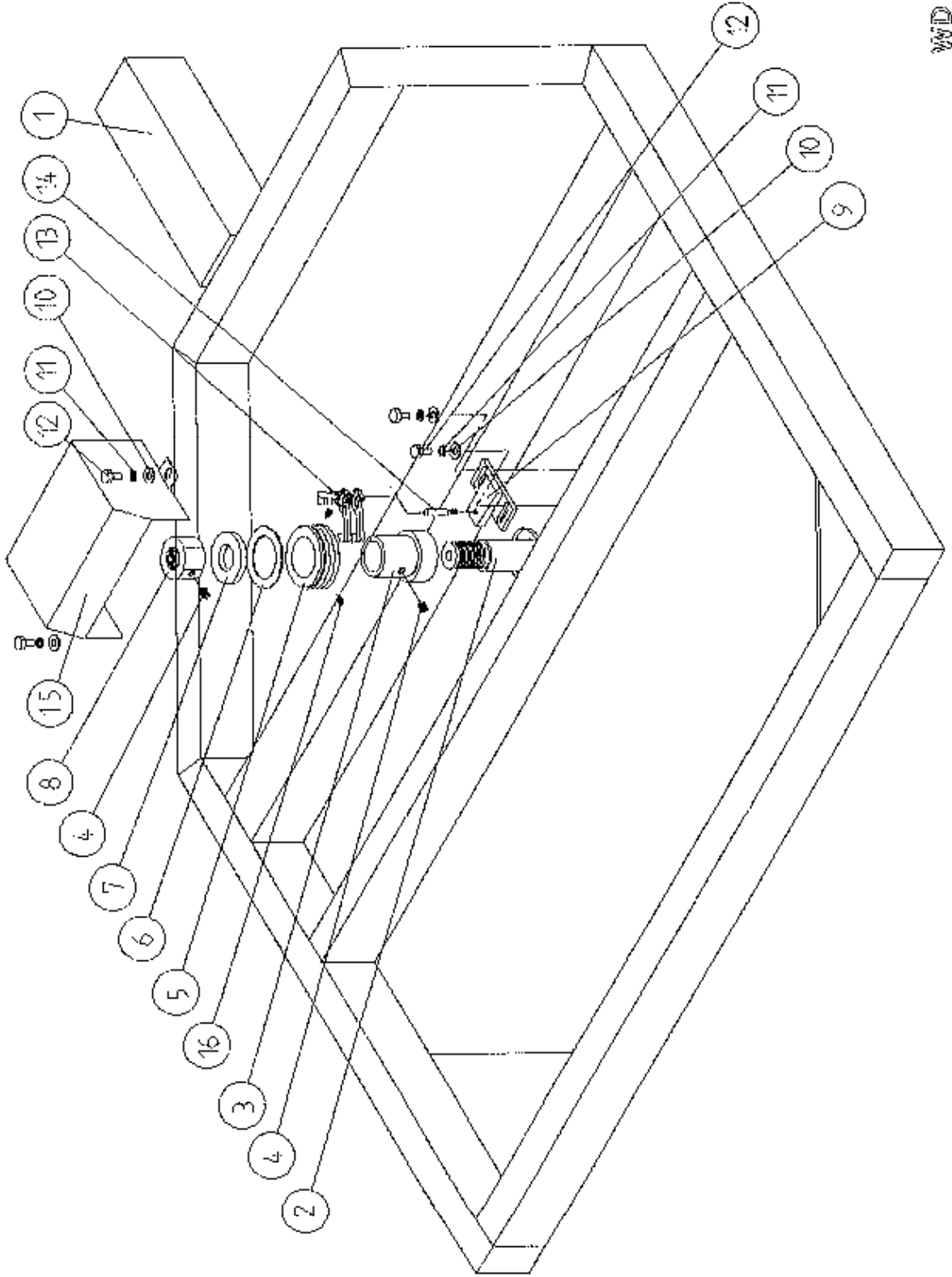
TANCO AUTOWRAP CUT AND START UNIT (1994)

MOUNTING FRAME

PARTS LIST

ITEM NO	DESCRIPTION	QTY	PART-NO
1.	MAIN MOUNTING FRAME ASSY	1	WD605-MF
2.	MAIN FRAME MOUNTING	1	WD605-MFM
3.	M10 HEX HD SET x 30mm LONG	2	Z26-062S
4.	10mm DIA SPRING WASHER	2	Z12-02-10
5.	M10 HEX NUT	2	Z18-10

TANCO AUTOWRAP - CUT AND START UNIT (1994)
 SLIP RING ASSEMBLY



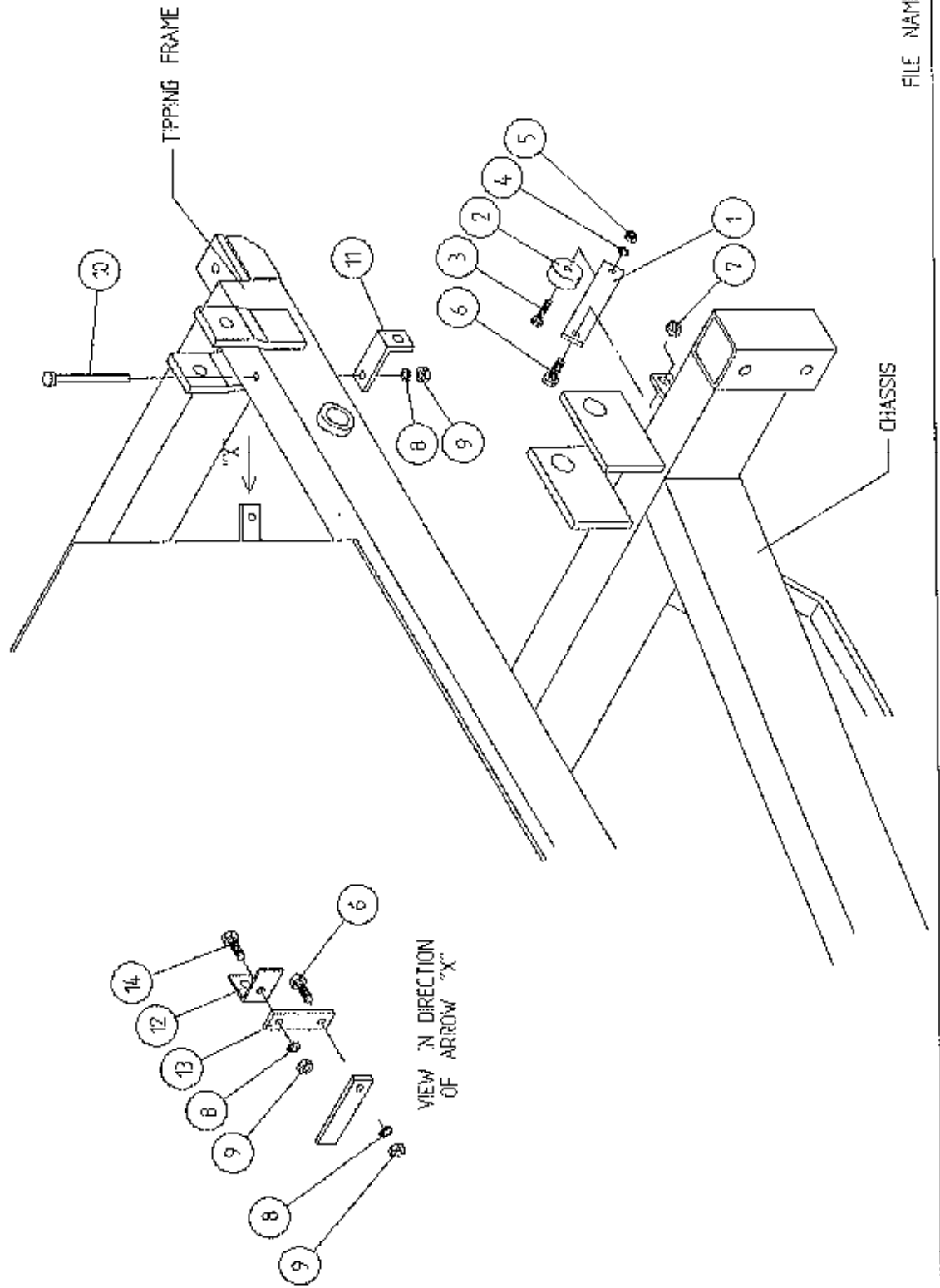
WD 895 - PL2

**TANCO AUTOWRAP CUT AND START UNIT (1994)
SLIP RING ASSY.**

PARTS LIST

ITEM NO.	DESCRIPTION	QTY.	PART-NO.
1.	UNDERSIDE OF TIPPING FRAME	1	
2.	TURNTABLE CENTRE SHAFT	1	WD60-768
3.	SLIP RING MOUNTING SLEEVE	1	WD60-825
4.	M8 GRUB SCREW x 6 mm LONG	2	Z28-007
5.	SLIP RING ASSY.	1	ZD605-308
6.	INSULATING RING	1	ZD605-350
7.	LOCKING COLLAR	1	WD60-770
8.	1 1/4" UNC HEX NUT	1	Z18-300
9.	SLIP RING MOUNTING BRACKET ASSY	1	WD605-SRMB
10.	10mm DIA FLAT WASHER 1" O.D.	4	Z11-02-101
11.	10mm SPRING WASHER	4	Z12-02-10
12.	M10 HEX HD SET x 20mm	4	Z26-060S
13.	BRUSHES	2	ZD605-306
14.	INSULATOR SLEEVE	1	ZD605-302
15.	SLIP RING GUARD ASSY	1	WD605-SRG
16.	M5 GRUB SCREW	2	Z28-005

TANCO AUTOWRAP
 CUT AND START UNIT
 SENSOR & MAGNET MOUNTING BRACKETS



TANCO AUTOWRAP CUT AND START UNIT 1994SENSOR AND MAGNET MOUNTING BRACKETSPARTS LIST

ITEM NO.	DESCRIPTION	QTY.	PART-NO.
1.	MAGNET MOUNTING BRACKET	1	WD605-57
2.	MAGNET	1	D6043
3.	M6 HEX HD SET x 30mm LONG	1	Z26-022S
4.	6mm DIA FLAT WASHER	1	Z11-02-06
5.	M6 LOCKNUT	1	Z23-06
6.	M8 HEX HD SET x 25mm LONG	2	Z26-040S
7.	M8 LOCKNUT (NYLOCK)	1	Z23-08
8.	8mm DIA SPRING WASHER	3	Z12-02-08
9.	M8 HEX NUT	3	Z18-08
10.	M8 HEX HD SET x 100mm LONG	1	Z26-057S
11.	SENSOR MOUNTING BRACKET	1	WD605-58
12.	ROTATE SENSOR MOUNTING BRACKET	1	WD605-120
13.	MOUNTING FLAT	1	WD605-07
14.	M8 HEX HD SET x 20mm LONG	1	Z26-020S

TANCO AUTOWRAP CUT AND START ELECTRICAL CIRCUIT

