

**TANCO AUTOWRAP
1080A MODEL 1999
OPERATORS HANDBOOK
AND
PARTS LIST
WD90-1080A-M0199**

WARRANTY RETURN FORM

PURCHASERS

NAME:.....

ADDRESS:.....

POST CODE:..... COUNTRY:.....

TELEPHONE NO:.....

FAX NO:.....

K.O.P.F. DISPENSER SERIAL NUMBER(S):.....

TANCO AUTOWRAP SERIAL NUMBER(S):.....

DATE OF PURCHASE:.....

*PLEASE RETURN TO: K. O. PRESSURE FRAMES LTD,
UNIT 3, CHIDDINGSTONE, CAUSEWAYESTATE,
NR. PENSHURST, KENT TN11 8JU.
ENGLAND.*

OR *TANCO ENGINEERING CO. BAGENALSTOWN, CO. CARLOW,
EIRE.*

INDEX	1080A MODEL	PAGE NO.
GENERAL SAFETY INSTRUCTION		1 2 3
SAFETY INSTRUCTIONS		4
SAFETY DECALS		5
TECHNICAL SPECIFICATIONS		6
PRE DELIVERY INSTRUCTIONS		7 8 9
TRANSPORT INSTRUCTIONS		10
MACHINE IDENTIFICATION		10
PREPARATION OF NEW MACHINE		10
HYDRAULIC CONNECTIONS		10
JUNCTION BOX AND CONTROLLER		11
AUTOMATIC BALE WRAP CONTROLLER		12
OPERATOR ACCESSIBLE MONITOR PROGRAMMES		13 14 15
MODE OF OPERATION		16
OPERATING INSTRUCTIONS		17
WARNING: LIFT ARM		18
FILM OVERLAP SYSTEM		19
SERVICE AND MAINTENANCE		20 21
FILM THREADING DIAGRAM		22
GEARBOX CHAIN DRIVE TENSIONING SYSTEM		23
TURNTABLE CHAIN DRIVE TENSIONING SYSTEM		24
BALE BELT TRACKING		25
BALE BELT TRACKING ILLUSTRATED		26
ELECTRICAL COMPONENTS 1080-A MODEL		27
HYDRAULIC CIRCUIT DIAGRAM 1080-A MODEL		28
HYDRAULIC COMPONENTS 1080-A MODEL		29
PARTS LIST FOR ABOVE		30
FITTING 2 WAY SOLENOID VALVE		31
CONSTANT INDEXING DRIVE ASSY		32
PARTS LIST FOR ABOVE		33
AUTOWRAP ILLUSTRATED		34
PARTS LIST FOR ABOVE		35
TURNTABLE CHAIN DRIVE ASSEMBLY		36
PARTS LIST FOR ABOVE		37
BALE BELT ROLLER MOUNTING BRACKETS		38
PARTS LIST FOR ABOVE		39
FILM DISPENSING SYSTEM 1080-A MODEL		40
PARTS LIST FOR ABOVE		41
VALVE/JUNCTION BOX/FILTER & DIVERTER VALVE MTG. BKT. ASSY		42
LIFT ARM ASSEMBLY		43
PARTS LIST FOR ABOVE		44
HYDRAULIC BALE RAMP		45
PARTS LIST FOR ABOVE		46
FAULT FINDING SUMMARY		47
HYDRAULIC CUT & START UNIT ILLUSTRATED		48
PARTS LIST FOR ABOVE		49
RECHARGING HYDRAULIC CYLINDER		50
TURNTABLE LOCKING ARRANGEMENT		51
SENSOR MAGNET MOUNTING BRACKETS		52
LIGHTING KIT		53

- 21: Do not stand between the tractor and the machine unless the hand brake is tight and/or stops have been placed under the wheels.
- 22: Before any adjustments, maintenance or repairs are carried out, ensure that the machine cannot be started up accidentally.

ADDITIONAL RECOMMENDATIONS FOR LINKAGE MOUNTED MACHINES

- 1: Before attaching the machine, ensure that the front tractor axle is sufficiently ballasted. Ballast is to be placed on the supports provided in accordance with instructions of the tractor manufacturer.
- 2: Do not exceed the maximum axle load or the overall transport weight prescribed by the tractor manufacturer.
- 3: Precision steering, tractor adherence, road holding and efficient braking are influenced by the type of implement, weight, ballast of front axle, ground or road conditions. It is therefore of utmost importance to be cautious in every given situation.
- 4: Be particularly cautious when turning corners, paying attention to machine overhang, length, height and weight.

SAFETY RECOMMENDATIONS FOR ATTACHING IMPLEMENTS TO TRACTOR

- 1: When attaching or removing the machine from the tractor, position hydraulic lift control lever in such a way that it cannot be set off accidentally.
- 2: When attaching the machine to the tractor hydraulic linkage, ensure that diameter of the link pins corresponds to the diameter of the ball joints.
- 3: **WARNING!** Danger of crushing and shearing can exist in the lifting zone of the tractor hydraulic linkage!
- 4: Do not stand between the tractor and the machine when operating the outer lever of the lift mechanism.
- 5: In transport, the machine lift mechanism should be stabilized by tractor tie rods to avoid floatation and side shifting.
- 6: When transporting the machine, lock the hydraulic lift control lever in place so that it cannot be lowered accidentally.

SPECIAL SAFETY INSTRUCTIONS

1. Stop engine of tractor before working on machine.
2. Put a suitable prop under raised platform before working in this area.
3. Always raise Lift Arm and fit safety prop before transporting machine on public roads.
4. Lift Arms should always be lowered before operating turntable.
5. Ensure platform rollers are parallel to Lift Arm before arm is raised.
6. On Autowrap models fitted with hydraulic bale ramp it is essential that the hydraulic hose is not disconnected from the hydraulic cylinder or hydraulic accumulator. This system is charged under pressure. Also, do not attempt to open the hydraulic accumulator as this is a pressurised unit.

OPERATING SAFETY INSTRUCTIONS

1. Operators should have their hands on the controls at all times when machine is in use.
2. Autowrap control unit and level controls must remain in the tractor cab at all times. The operator must at no time leave the tractor cab when the machine is in motion.
3. Keep onlookers clear of machine at all times. Danger zone is 5 metres.
4. Beware of rotating turntable and all moving parts.
5. If not operated correctly the bale could fly off the turntable. The end support rollers must always be fitted. Do not exceed recommended turntable speed of 30 r.p.m. Mis-shapen bales combined with excessive turntable speeds can be dangerous.
6. Care must be taken when tipping bales from machine on sloping ground and during subsequent handling to ensure that they do not roll, thus causing hazard.

THINK OF YOUR PERSONAL SAFETY AND THAT OF OTHERS AT ALL TIMES.

TECHNICAL SPECIFICATIONS 1060A/1060ATP MODELS (Trailed)

Dimensions	Total Length - Excluding Bale Ramp	350cm
	Width - excluding lift arm	221cm
	Width - lift arm fully raised	243cm
	Width - lift arm lowered	380cm
	Height to top of side (bale guide) rollers	110cm
	Height to top of lift	242cm
Weight	With lift arm	1230kgs
	Without lift arm	1100kgs
Wheels	Size	10-80.12
	Pressure	42 p.s.i.
Lift arm capacity - Axle extended normally		500kgs
Lift arm capacity - Axle extended fully		650kgs
Speed of turntable		25 rev/min*
Oil requirement		23litres/min (165 kp cm ²)
Attachment to tractor		Tractor Hitch
Bale sizes: "Square Bales"		UP to 1.7m
New Holland D1000, D1010 Welger D4000 Mengele 530 Vicon MP 800 M.F.5. Hesston 4700, 4750, 4860 Krone Big Pack 80/80 Greenland 8080 John Deere '680		
Bale Sizes: "Round Bales"		1.20m Bales Max 800kg
Film (Width of Roll)		750mm

***The speed of rotation can be varied to suit various conditions but on no account should it exceed 25 r.p.m. (Speeds in excess of 25 r.p.m. will void warranty).**

(v) ROAD WHEELS (trailed machines only)

Attach road wheels ensuring that nuts are tight and tyre pressure is 50 p.s.i.

(vi) BALE RAMP OR MAT

Attach bale ramp or mat to rear of chassis. Note Round bale trailed models have bale ramps with an option of hydraulic bale ramp.

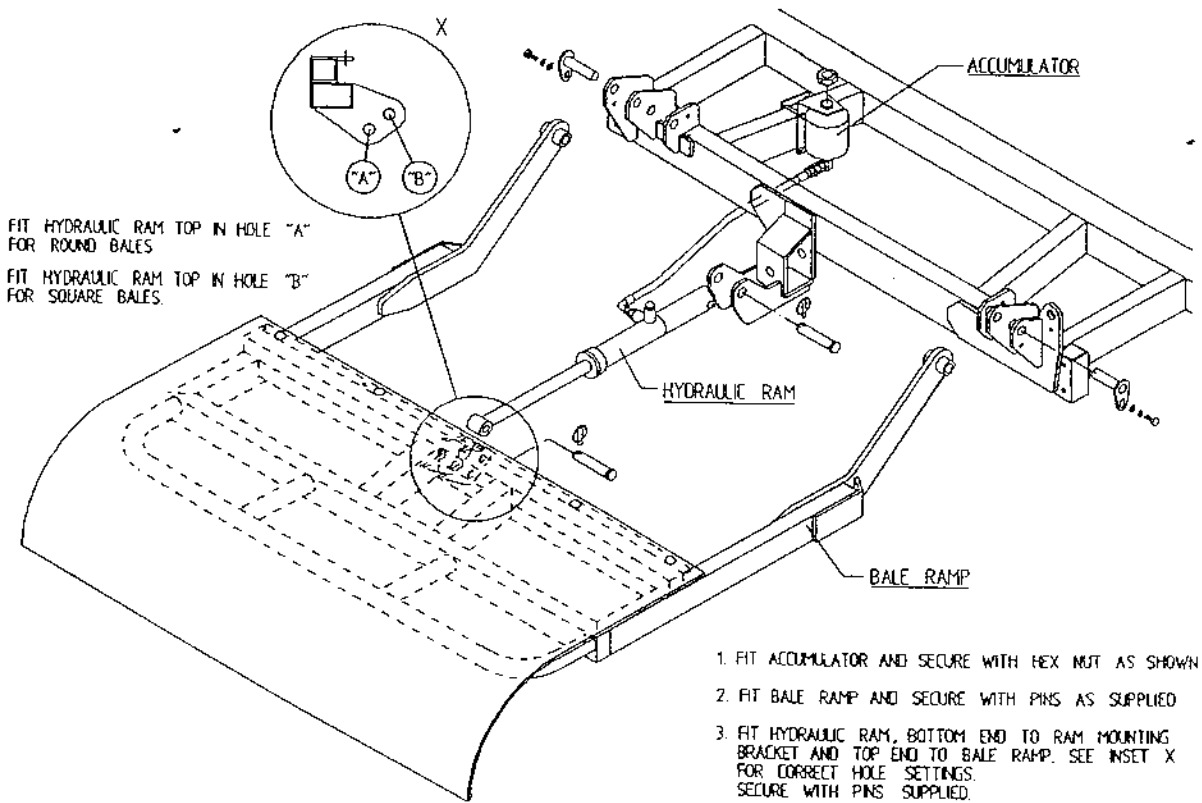
Linkage mounted machines have bale mats. The standard 1050 trailed models have hydraulic bale ramps.

SEE INSTRUCTION BELOW FOR FITTING HYDRAULIC BALE RAMP.

CHECKS TO BE PERFORMED

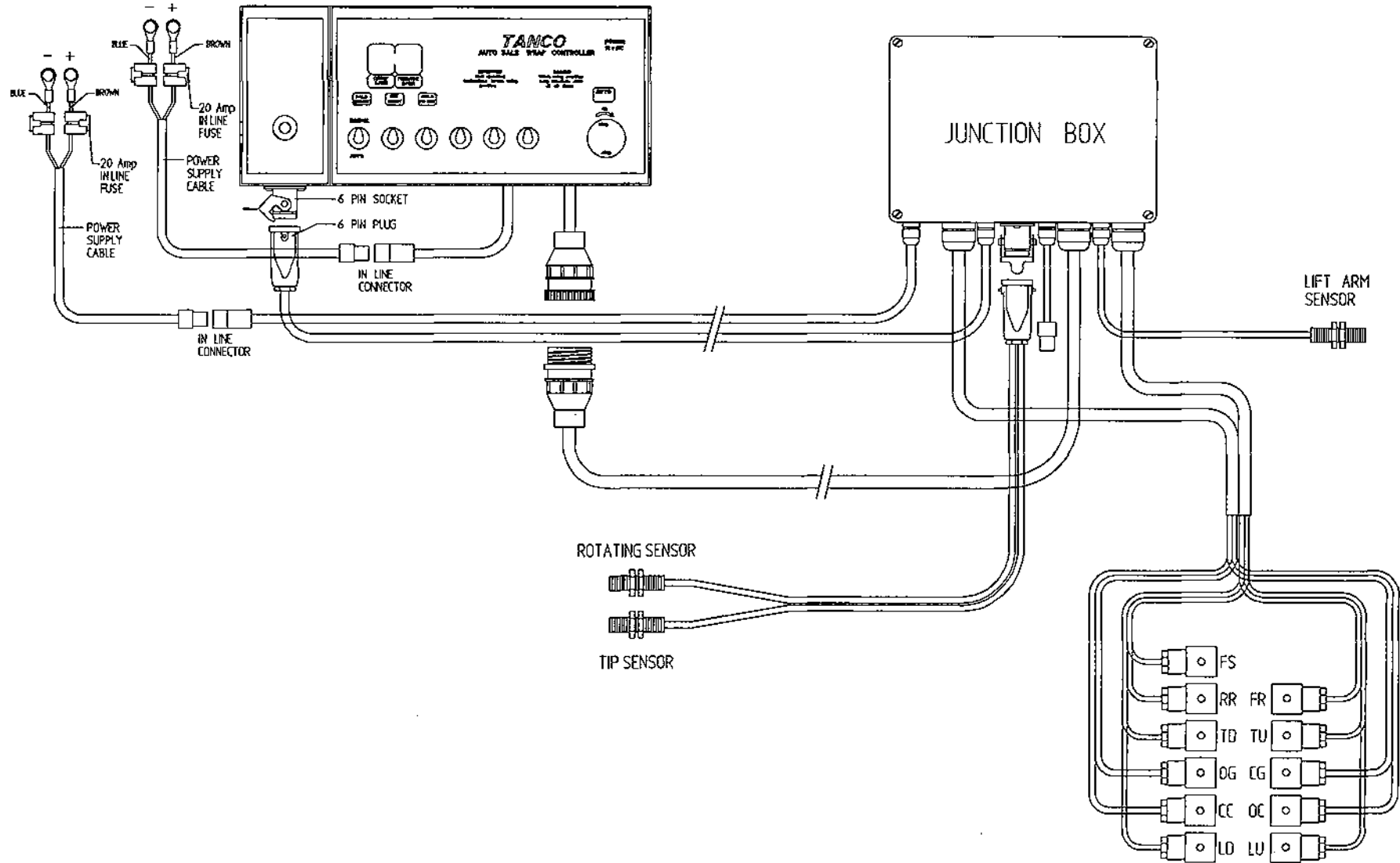
1. Check that all bolts and nuts are tight.
2. That all lubrication points are greased.
3. Check that all guards are in place.
4. Check all operating and safety stickers are in place.

INSTRUCTIONS FOR FITTING HYDRAULIC BALE RAMP



1. FIT ACCUMULATOR AND SECURE WITH HEX NUT AS SHOWN
2. FIT BALE RAMP AND SECURE WITH PINS AS SUPPLIED
3. FIT HYDRAULIC RAM, BOTTOM END TO RAM MOUNTING BRACKET AND TOP END TO BALE RAMP. SEE INSET X FOR CORRECT HOLE SETTINGS. SECURE WITH PINS SUPPLIED.

TANCO AUTOWRAP 1080 A JUNCTION BOX AND CONTROLLER FOR 5 BANK VALVE



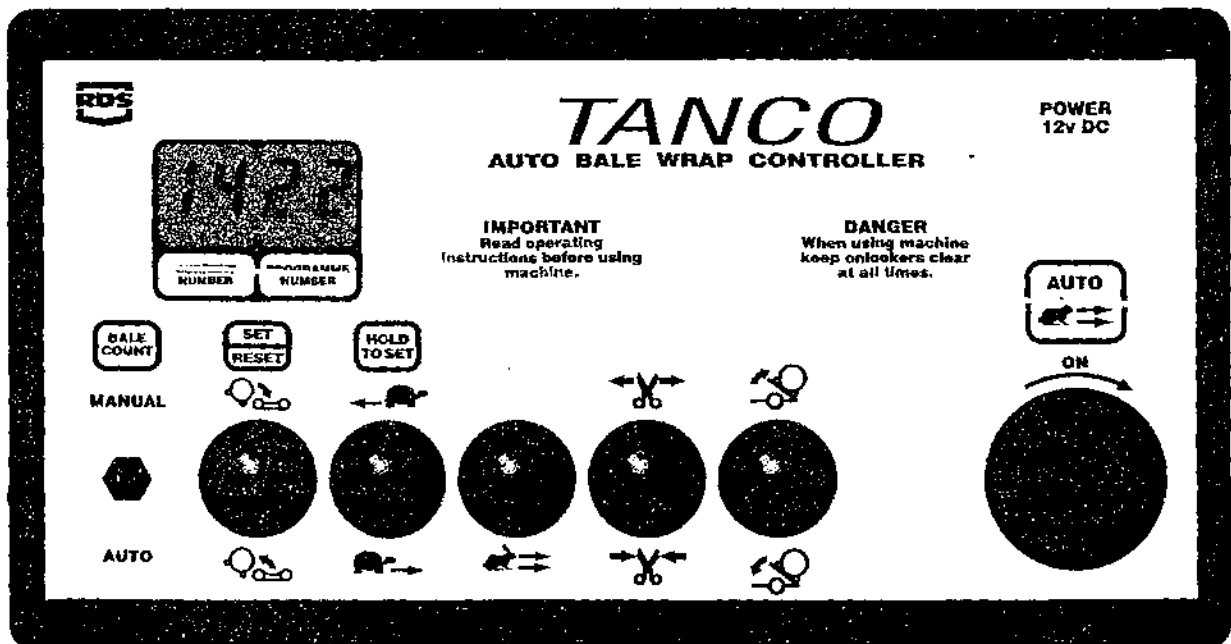
AUTOMATIC BALE WRAP CONTROLLER (issue 116 onwards)

The control unit on the control of the bale wrapping sequence. The control unit is preprogrammed to automatically wrap the bale to the required number of rotations. Once complete, the turntable stops in the correct position to allow the film to be cut and held. Incorporated is also an inching override facility on the control unit to move the turntable, left or right, to ensure that the film is properly gathered. Once the turntable is lowered it rotates automatically forward through 90 degrees to facilitate loading the next bale. For reasons of safety loading and tipping off of the bale is operator controlled using switches on the control unit.

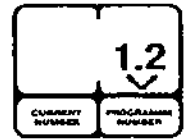
The programming of the Automatic Bale Wrap Controller is easily done by following the steps outlined below.

Once the unit is switched on, the number of required turntable rotations appears on the right hand display. To change this press and hold the "Hold to Set" button, see fig 7., then press the "Set/Reset" button. The first digit of the number will then blink and count from 0-9. Release the "Set/Reset" button at the required number. By pressing the "Set/Reset" again the second digit can be changed.

The monitor counts the number of bales per batch and the cumulative total. To see these, press the "Bale count" button. The first number to appear is the batch total. If the button is held down for 10 seconds, a line will appear on the display, followed by the cumulative number wrapped. The batch count can be reset to 0 by holding the "Bale Count" button down and pressing the "Set/Reset" once. The cumulative total cannot be returned to zero.



280ARC/580A/1080A/1080ATP



Program 5: Duration of slow rotation at end of wrapping cycle.

Display Reading: 1.2

Function: Shows time that elapses in seconds after turntable magnet passes rotate sensor on last rotation before turntable changes to slow mode. Note: This value need only be altered as follows.

(i) To increase duration of slow rotation at end of wrapping cycle, reduce this value in 0.1 increments.

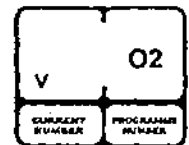
(ii) To reduce duration of slow rotation at end of wrapping cycle, increase this value in 0.1 increments.

Program 6: Machine Operation.

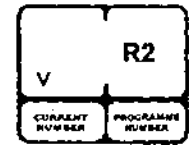
There are six separate settings for this program depending on the model of machine being used.

Three of the settings apply to remote control models and three to non remote models.

Non remote control mode with 90 degrees forward function = Symbol **O2**



Remote control mode with 90 degrees forward function = Symbol **R2**.



Remote control mode with no 90 degrees reverse or forward function = Symbol **r**

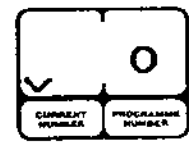


Remote control mode with 90 degrees reverse function = Symbol **R**.

Note: This programme only applies to pre 1999 models of autowrap



Non remote control mode with no 90 degrees reverse or forward function = Symbol **o**.



Non remote control mode with 90 degrees reverse function = Symbol **0**.

Note: This programme only applies to pre 1999 models of autowrap

MODE OF OPERATION

Automatic Mode: with switch in "Auto" Position.

1. Ensure turntable is in correct position to accept bale and that film is gripped by the "Cut and Start".
2. Lower bale lift arm, drive alongside, pick up the bale and raise the lift arm.
3. Allow the bale to roll gently onto the turntable so that it is central between the end rollers.
4. Lower the arm clear of the turntable and press the "Auto" (Start) button commence wrapping.
NOTE: The table must be in the correct position before the "Auto" (Start) button is pressed. If not the table may stop in the wrong position at the end of wrapping.
5. With the controller in Automatic Mode the turntable will start off for half of one rotation in "Slow Mode" before changing to "Fast Mode". During the final rotation it will change to "Slow Mode" and stop in the correct position so that the film is lined up above the open "Cut and Start". NOTE: The turntable can be moved to left or right to align the "Cut and Start" by using the slow rotate switch on the controller or the buttons on the remote control unit.
6. On the third rotation of the wrap cycle the "Cut and Start" will open automatically.
7. When in a safe position to do so, press the "Tip Up" button, the turntable will tip upwards gathering the film on the "Cut and Start" plunger whilst the pull down arm reduces the film to a rope which is cut as the "Cut and Start" closes, cutting the film and gripping the film end in readiness for the next bale.
8. The tip off sequence is automatic and once the turntable lowers it will reverse and stop in position to facilitate loading, if programmed to do so.

Manual Mode: with switch in "Manual" Position

1. Load the bale as outlined above.
2. Using the slow rotation switch. start the wrapping cycle.
3. After half of a rotation, switch to the fast wrapping mode by pressing the appropriate switch.
4. During the wrapping extend the "Cut and Start" out to the end.
5. At the end of the wrap cycle line up the "Cut and Start" with the film.
6. When safe to do so, tip up the turntable until all the film is gathered on the "Cut and Start". Operate switch to close position. the "Cut and Start" will close cutting the film. Continue tipping until the bale rolls off then lower the turntable.
7. Position the turntable to load the next bale.

WARNING: LIFT ARM

1. The Lift Arm on the trailed machine is designed to pick up and deposit bales onto the turntable prior to wrapping and to raise the machine while empty, to facilitate adjustment of sliding axle. It is not intended to be used for transporting bales over distances or for use as a stabiliser whilst wrapping.

Therefore any use of the lift arm outside its primary function will be deemed to be abuse and will void all warranty.

2. Before raising loading arm ensure that turntable is in correct position for loading bales so that loading arm will not foul it.

Failure to observe this warning will lead to failure of turntable centre bearing and/or turntable 4" support wheels, which will not be covered by warranty.

SERVICE AND MAINTENANCE.

- 1: All nuts and bolts should be tightened after one hour 'm use and thereafter regularly.
- 2: Wheel pressure should be normally kept at 42 psi depending on bale weight and field conditions.
- 3: Inspect moving parts for wear on daily basis.

4: Lubrication.

Drive chain & sprocket	Grease every 24 hours.
Main rollers	Grease every 24 hours.
Hinge pins on Lift Arm	Grease every 24 hours.
Hinge pins on main tip frame	Grease every 24 hours
Hydraulic rams	Grease every 24 hours.
Film spool assy	Grease every 24 hours.
Dispenser gearboxes	One shot of Grease every, 500 bales. See 6.
Main spindle	Grease even 4000-5000 bales.

5: Adjustments.

Turntable Drive chain:	Adjust after first days work then check/adjust every 50 hours. See Fig. 8
Gearbox Drive chain:	Adjust after first days work then check/adjust every 50 hours. See Fig. 2
Roller Drive chain:	Adjust after first days work then check/adjust every 50 hours. See Fig. 3
Main Bale Belt:	See belt tracking instructions.

6: Film Dispenser.

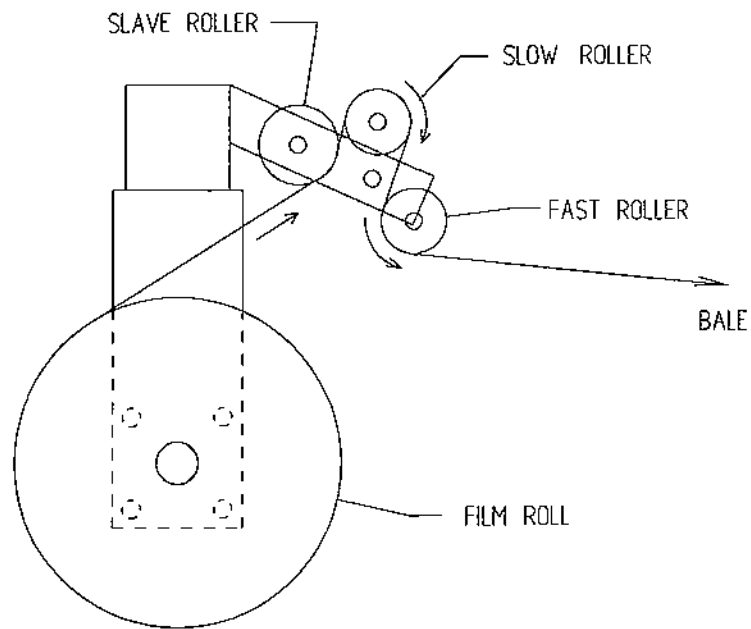
Fit with marked gearbox at top.

Apply one shot of grease every 500 bales Use only **NLGI 0 GRADE LITHIUM GREASE**. We reconunend SILKOLENE G46 SL EP grease or approved equivalent, i.e. ESSO BEACON EPO. Wash rollers often to avoid build up of Tack from film using petrol. Follow film threading diagram. See Fig. 1.

7: Film Adjustment.

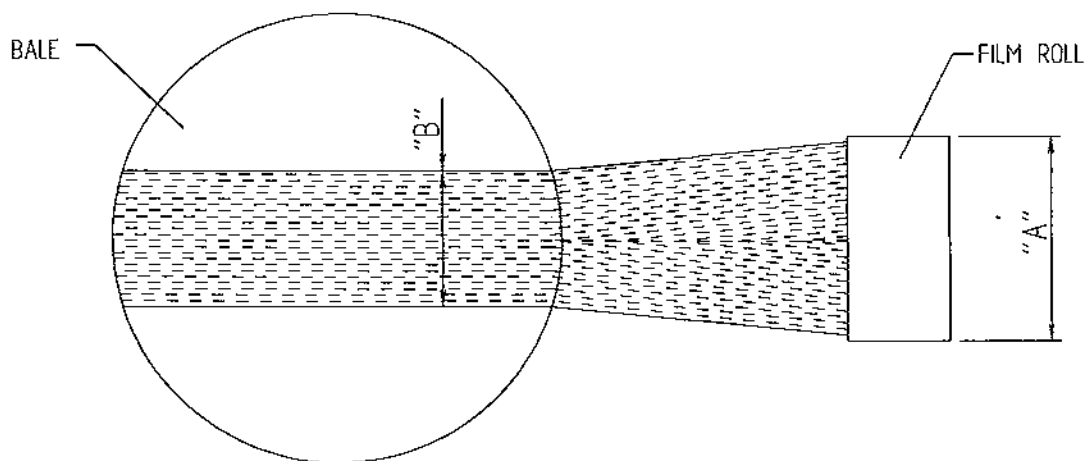
Centre of film roll must be in line with centre of bale and film mast should be vertical.

TANCO AUTOWRAP FILM THREADING DIAGRAM



FILM ADJUSTMENT

CENTRE OF FILM ROLL MUST BE IN LINE WITH CENTRE OF BALE AND MAST SHOULD BE VERTICAL.



FILM ROLL WIDTH "A"	FILM WIDTH ON END OF BALE "B"
500 mm	400 mm
750 mm	600 mm

Fig. 1

FILE NAME W060-LA21

TANCO AUTOWRAP TURNTABLE CHAIN DRIVE TENSIONING SYSTEM

TENSIONING PROCEDURE

1. TIP UP MACHINE AND SUPPORT WITH A PROP.
2. REMOVE CHAIN GUARD.
3. SLACKEN M12 CLAMPING BOLTS SLIGHTLY.
4. SLACKEN LOCKNUT A.
5. ADJUST NUT B UNTIL THERE IS 8 mm - 10 mm DEFLECTION ON CHAIN.

NOTE WARNING:
DO NOT OVER TENSION CHAIN AS MOTOR WILL BE DAMAGED

6. TIGHTEN LOCKNUT A.
7. TIGHTEN M12 CLAMPING BOLTS.
8. REFIT CHAIN GUARD.

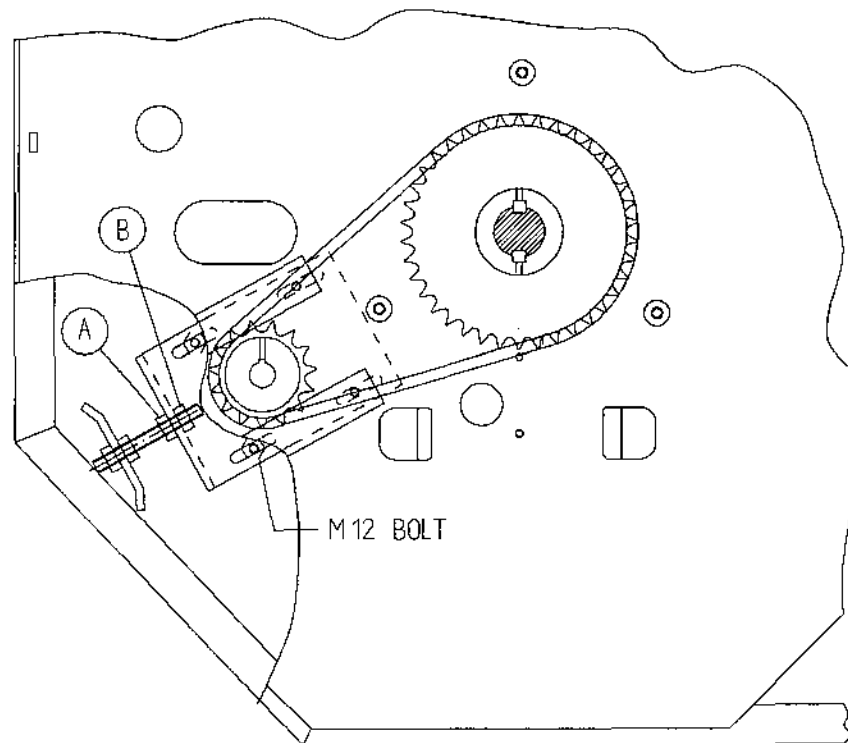
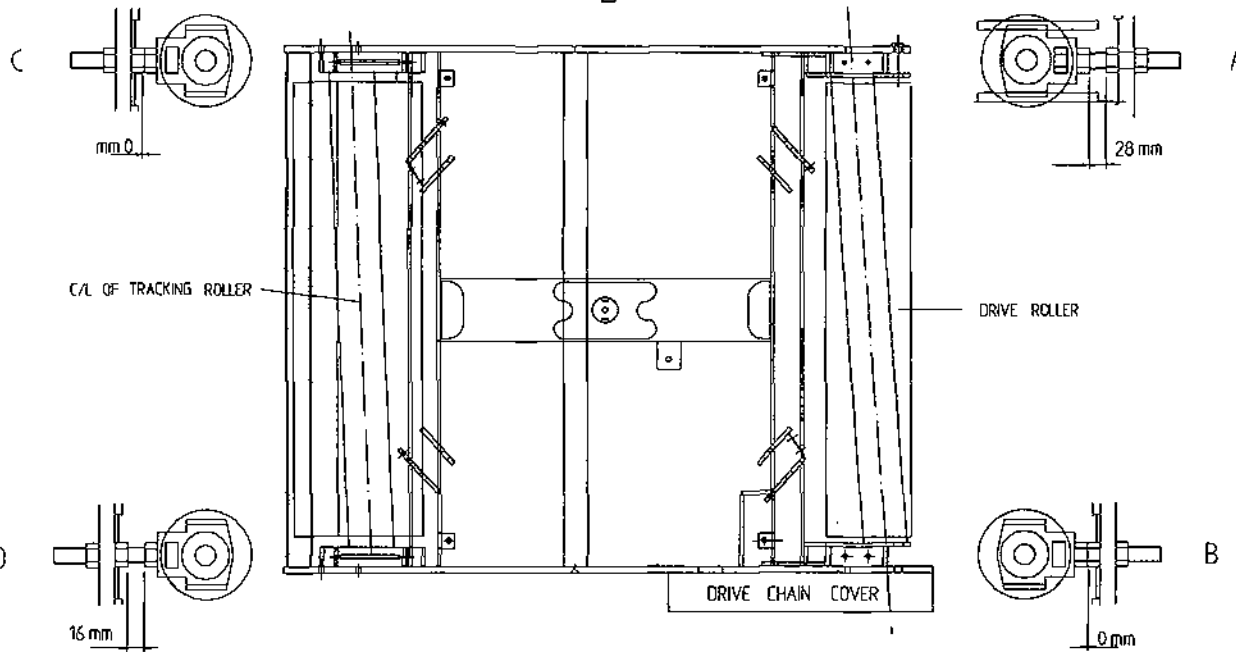
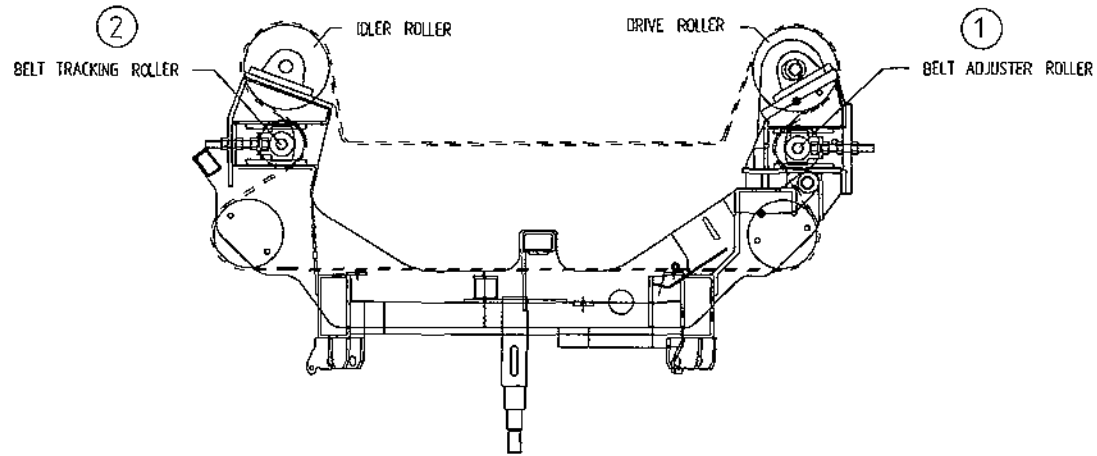


Fig. 8

FILE NAME WD64-LA2

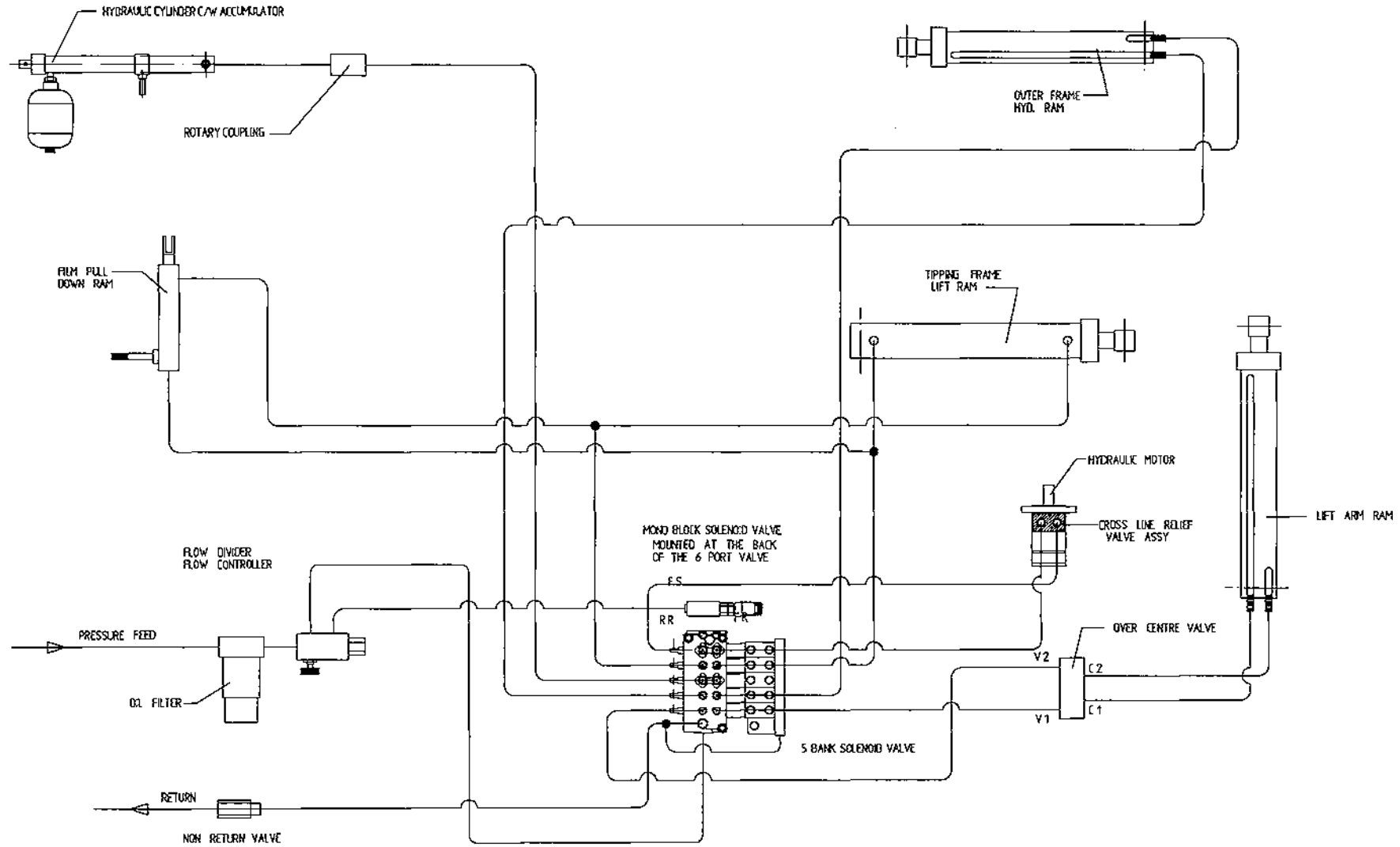
1080 AUTOWRAP BALE BELT TRACKING



B.T. 1

FILE NAME 9228 A

TANCO AUTOWRAP 1080 A MODEL HYDRAULIC CIRCUIT DIAGRAM



RR
FR ELECTRICAL CONNECTIONS
FS

FILE NAME WD80-HC 46

WD80-PL46

**TANCO AUTOWRAP 1080-A MODEL
HYDRAULIC COMPONENTS**

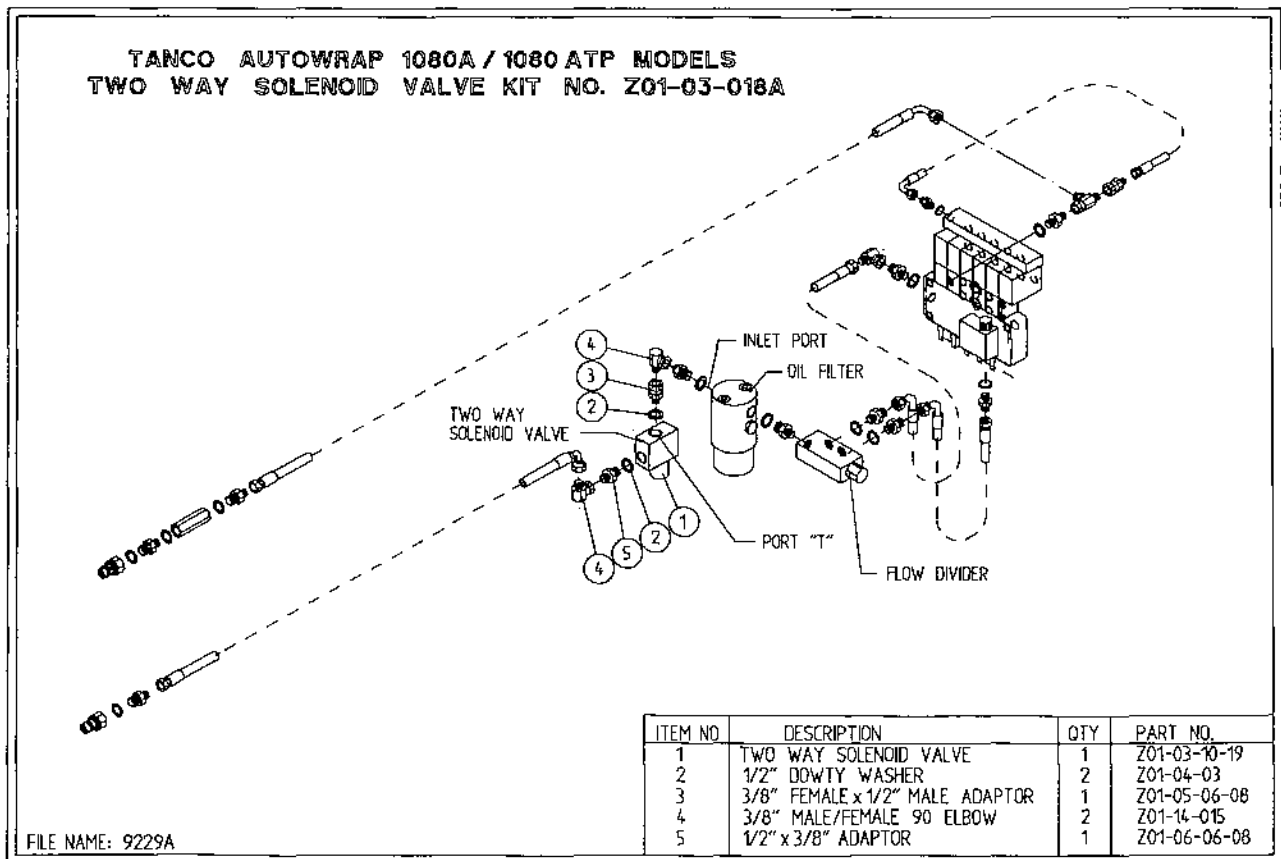
PARTS LIST

ITEM NO.	DESCRIPTION	QTY	PART NO
1	5 BANK SOLENOID VALVE	1	Z01-03-A1070
2	HYDRAULIC MOTOR C.L.	1	Z01-02-RF200
3	CROSS LINE RELIEF VALVE	1	Z01-03-004
4	1/2" B.S.P. BOTTOM BANJO BOLT (SPECIAL)	2	Z01-03-002B
5	HYDRULIC RAM (TIPPING FRAME)	1	Z01-01-AR687
6	1/2" DOWTY WASHER	10	Z01-04-03
7	1/2" NON RETURN VALVE	1	Z01-03-017
8	1/2" x 3/8" ADAPTOR	4	Z01-06-06-08
9	1/2" x 1/2" ADAPTOR	3	Z01-06-08-08
10	1/2" MALE END Q/R COUPLING	2	Z01-15-081
11	HYD. RAM (FOR LIFT ARM)	1	Z01-01-AW
12	108" ST/90 3/8" D/W HOSE	2	Z38-R2-108-S9
13	72" ST/90 3/8" D/W HOSE	3	Z38-R2-72-S9
14	84" ST/90 3/8" D/W HOSE	1	Z38-R2-84-S9
15	24" ST/90 3/8" D/W HOSE	2	Z38-R2-24-S9
16	36" ST/90 3/8" D/W HOSE	1	Z38-R2-36-S9
17	12" ST/90 3/8" D/W HOSE	1	Z38-R2-12-S9
19	48" ST/90 3/8" D/W HOSE	1	Z38-R2-48-S9
20	FILTER	1	Z01-24-08
21	3/8" x 3/8" ADAPTOR FITTED WITH 0.06" RESTRICTO	1	Z01-03-40
22	18" ST/90 3/8" D/W HOSE	2	Z38-R2-18-S9
23	108"ST/90 1/2" D/W HOSE	2	Z1 2-R2-108-S9
24	HYD RAM D/A (PULL DOWN ARM)	1	Z01-01-AW25
25	1/4" DOWTY WASHER	1	Z01-04-01
26	1/4" x 3/8" ADAPTOR	1	Z01-06-04-06
27	3/8" MALE x 3/8" FEMALE ADAPTOR	2	Z01-05-06-06
28	3/8" MALE/FEMALE 90 ELBOW	2	Z01-14-015
29	IN LINE FLOW DIVIDER	1	Z01-03-10-A7W
30	3/8" DOWTY WASHER	18	Z01-04-02
31	3/8" x 3/8" ADAPTOR	16	Z01-06-06-06
33	OVER CENTRE VALVE	1	Z01 -03-1 0-A8
35	COPPER WASHER	2	Z01 -04-15
37	3/8" BULKHEAD ADAPTOR	1	Z01 -06-05-06
39	96" ST/90 3/8" HOSE	2	Z38-R2-96-S9
40	48" ST/ST 3/8" D/W HOSE	4	Z38-R2-48-SS
41	14" ST/90 3/8" D/W HOSE	2	Z38-R2-14-S9
42	HYD RAM (FOR SQUEEZ ARM)	1	Z01-01-AW1070
43	CUT AND START	1	Z01-01-ANH
44	ROTARY COUPLING	1	Z01-02-AWR
45	3/8" BANJO COUPLING	1	Z01-19-062
46	3/8" SINGLE TOP BANJO BOLT	1	Z01-20-062
47	3/8" MALE x 3/8" MALE x 3/8" FEMALE 'T' PIECE	2	Z01-12-002

**INSTRUCTION FOR FITTING TWO WAY SOLENOID VALVE CLOSED CENTRE
CONVERSION KIT TO TANCO AUTOWRAP 1080A / 1080ATP MODELS.**

REQUIRED WHEN OPERATING MACHINES ON TRACTORS WITH CLOSED CENTRE
HYDRAULIC SYSTEMS.

1. Disconnect S1/19'm hose from inlet port on oil filter.
2. Connect port "T" on solenoid valve assembly to inlet port on oil filter.
3. Reconnect S1/90 hose to port "P" on solenoid valve.
4. Connect 2 pin female connector to existing 2 pin connector at junction box.
5. Change the seventh controller function setting from n to J. See instruction manual for further information.



**TANCO AUTOWRAP 1080 MODEL
CONSTANT INDEXING DRIVE ASSEMBLY
PARTS LIST**

WD90PL32

ITEM NO	DESCRIPTION	QTY	PART NO
1	TURNTABLE ASSY	1	WD90-TA
2	TIPPING FRAME ASSY	1	WD67-TF
3	DRIVE ROLLER ASSY	1	WD610-BRD1
4	GEAR BOX	1	Z0I-25-300
5	M12 HEX HD SET x 30mm LONG	4	Z26-082S
6	12mm DIA SPRING WASHER	7	Z12-02-12
7	CHAIN TENSIONER	2	WD60-CT
8	CENTRE SPROCKET ASSY 27 TOOTH	1	WD64-CSA
9	M12 HEX HD SET x 25mm LONG	3	Z26-081S
10	46 TOOTH SPROCKET	1	Z06-D64-46S
11	M10 HEX HD SET x 25 mm LONG	1	Z25-0611S
12	10mm DIA SPRING WASHER	8	Z12-02-01
13	RETAINING COLLAR	4	WD623-071
14	CHAIN 3/4" PITCH x 101 PITCHES	1	Z09-AW-56
15	ROSTA TENSIONING UNIT ARM	1	Z06-454
16	SPROCKET	1	Z06-D610-1620
17	M10 HEX HD BOLT x 65mm LONG	1	Z26-0671B
18	SPROCKET	1	Z06-D610-20K
19	M10 LOCKNUT	1	Z23-10
20	CHAIN 3/4" PITCH x 50 PITCHES	1	Z09-AW-52
21	CHAIN 3/4" PITCH x 75 PITCHES	1	Z09-AW-75
22	CHAIN STRIPPER	1	TD610-185
23	M10 HEX NUT	2	Z18-10
24	10mm DIA FLAT WASHER	6	Z10-02-10
25	M10 HEX HD SET x 30mm LONG	3	Z26-062S
26	KEY 12mm x 10mm x 55mm LONG	1	WD610-198
27	M10 CUP SQ. SCREW x 30mm LONG	1	Z13-112
28	M10 HEX HD BOLT x 80mm LONG	1	Z26-00691B
29	CHAIN GUARD (SMALL)	1	WD90-CGS
30	CHAIN GUARD (LARGE)	1	WD90-044
31	M10 HEX HD SET x 25mm LONG (TUFLOCK)	3	Z26-061S
32	SPROCKET/BRACKET PIVOT SHAFT	1	WD610-71
33	1" UNC LOCKNUT	1	Z23-251
34	1" DIA H/D FLAT WASHER	2	Z10-02-25
35	LOCKING PLATE	2	WD623-060
36	SPIRAL PIN	2	Z03-23--062
37	SPROCKET	1	Z06-D65-1316S
38	M6 GRUB SCREW	2	Z28-006
39	CHAIN TENSIONER BRACKET	1	WD610-CTB1
40	CHAIN TENSIONER BLOCK ASSY INNER	1	WD610-TB11
41	CHAIN TENSIONER BLOCK ASSY OUTER	1	WD610-TB01
42	SPRING 14.5mm O.D. x 1.6mm WIRE x 60mm LONG	1	Z07-48
43	M10 HEX HD SET x 40mm LONG	1	Z26-064S
44	OILITE BUSH	2	Z06-106
45	M10.9 x 30mm SETS	2	Z26-062SB
46	MAGNET	2	D6043
47	M6 CSK HD SET x 35mm LONG	2	Z13-132
48	6mm DIA FLAT WASHER	2	Z11-02-06
49	M6 LOCKNUT	2	Z23-06

**TANCO AUTOWRAP 1080 MODELS
PARTS LIST**

ITEM NO.	DESCRIPTION	QTY	PART NO.
1	CHASIS ASSY	1	WD67-CHA
2	STUB AXLE (LONG)	1	Z04-0336
3	WHEELS	2	Z04-04-1070
4	WHEELS NUTS	10	M22AWNA
5	BISSEL PIN	1	WD60-861
6	M10 HEX NUT	3	Z18-10
7	HYD RAM	1	Z01-01AR687
8	RAM BOTTOM PIVOT PIN	1	Z03-02-330
9	RAM TOP PIVOT PIN	1	Z03-03-50
10	2' x 1/4" SPLIT PIN	2	Z03-21-29
11	TIPPING FRAME ASSY	1	WD67-TF
12	TIPPING FRAME PIVOT PIN C/W GREASE NIPPLE	2	Z03-01-9055
13	BELT GUIDE ASSEMBLY	1	WD610-BG1
14	BELT GUIDE ASSEMBLY	1	WD610-BG2
15	INNER BEARING	2	M22AB-209
16	SCREW JACK ASSEMBLY (WELD ON)	1	WD60-JA
17	M8 HEX HD SETS x 20mm LONG	4	Z26-039S
18	M8 HEX NUTS	14	Z18-08
19	8m DIA FLAT WASHERS (MUD FLAP)	8	Z11-02-081
20	8mm DIA SPRING WASHERS	12	Z12-02-08
21	SCRAPER	2	WD60-711
22	STUB AXLE SHORT	1	Z04-032
23	4 mm "R" CLIP	1	Z36-02
24	RING HITCH ASSY (LONG)	1	WD65-HIT
25	M16 HEX HD SET x 25mm LONG	4	Z26-124S
26	M16 LOCKNUTS	4	Z23-16
27	M10 HEX HD SET x 25mm LONG	2	Z26-060SY
28	10mm DIA MACHINED FLAT WASHER	2	Z11-02-1 0
29	TURN TABLE ASSY	1	WD610-TA2
30	10mm DIA SPRING WASHER	5	Z12-02-10
31	SUPPORT WHEELS	4	Z06-466
32	AXLE ASSY C/W GREASE NIPPLE	4	Z03-22-AW/AX
33	M20 LOCKNUTS	4	Z23-20
34	TURN TABLE COVER PLATE	1	WD60-093
35	SPACER	8	WD60-198
36	OUTER BEARING	2	M22AB-206
37	FILM TRANSPORT BRACKET	1	WD60-FTB1
38	CLAMPING PLATE	1	WD60-933
39	M10 HEX HD BOLT x 140mm LONG	3	Z26-0726B
40	PLASTIC CAP	2	Z32-08
41	M10 HEX HD BOLT x 80mm LONG	1	Z26-0691B
42	M10 LOCK NUT	1	Z23-10
43	END ROLLER MOUNTING BRACKET	2	WD610-RMB
44	END ROLLER SHAFT ASSY	4	WD610-RSA
45	10mm DIA "D" LINCH PIN	6	Z38-03
46	SIDE ROLLER	4	Z06-AWR
47	BEARING 25mm I.D.	4	Z06-AWRB-93
48	THRUST WASHER	4	WD60-292
49	PLASTIC CAP	4	Z06-AWRC
50	CIRCLIP	4	Z28-525

**TANCO AUTOWRAP
TURNABLE CHAIN DRIVE ASSEMBLY**

PARTS LIST

ITEM NO	DESCRIPTION	QTY	PAPT NO
1	TIPPING FRAME ASSY	1	WD67-TF
2	38 TOOTH x 1" PITCH SPROCKET	1	Z06-D64-38
3	CHAIN 1" PITCH x 54 PITCHES	1	Z09-AW6
4	SPINDLE SPACER	1	WD64-040
5	KEY 5/8" SQ x 50mm LONG	2	WD64-052
6	15 TOOTH x 1" PITCH SPROCKET	1	Z06-I60-046
7	KEY 5/16" SQ x 45mm LONG	1	WD64-053
8	LOCKING COLLAR	1	WD623-071
9	10mm DIA SPRING WASHER	1	Z12-02-10
10	3/8" UNC HEX HD SET x 1" LONG	1	Z27-023S
11	2" DIA FLANGE BEARING C/W CAM LOCK COLLAR	1	Z06-49EC
12	5/8" UNF HEX HD SET x 2" LONG	4	Z31B-064
13	5/8" UNF LOCKNUT	4	Z20-10
14	HYDRAULIC MOTOR	1	Z01-02-RF200
15	HYDRAULIC MOTOR MOUNTING PLATE	1	WD64-001
16	M12 x 50mm ALLEN HD O/S SCREW	4	Z13-5-12X50
17	M12 HEX HD SET x 30mm LONG	4	Z26-082S
18	12mm DIA SPRING WASHER	4	Z12-02-12
19	12mm DIA FLAT WASHER	4	Z10-02-12
20	M16 THREADED BAR x 150mm LONG	1	WD64-038
21	M16 HEX NUT	4	Z18-16
22	SPACER	1	Wi60-093
23	M12 LOCKNUTS	4	Z23-12
24	M12 HEX HD SET x 50mm LONG	2	Z26-086S
25	DRIVE CHAIN GUARD	2	WD66-DCG
26	M12 HEX NUT	2	Z18-12
27	M6 HEX NUT	1	Z18-06
28	M6 90 DEGREE GREASE NIPPLE	1	Z39-65
29	M12 GRUB SCREW x 16mm LONG	2	Z28-012

**TANCO AUTO WRAP 1080 MODELS
BALE BELT ROLLER MOUNTING BRACKETS**

PARTS LIST

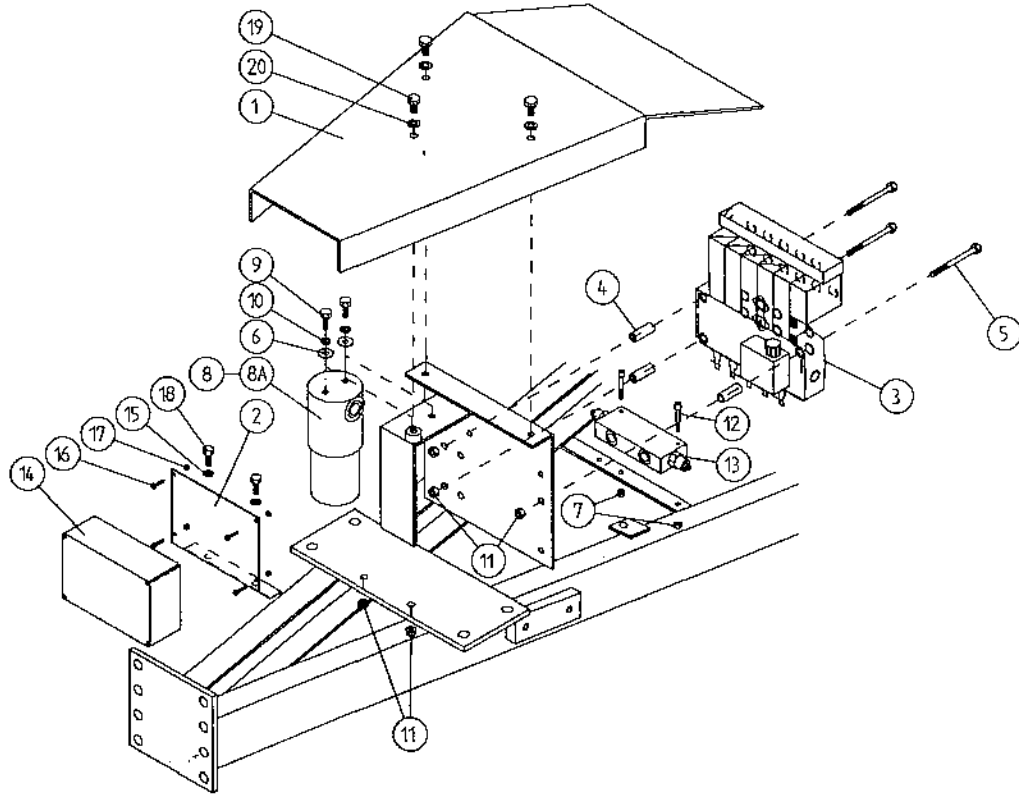
ITEM NO.	DESCRIPTION	QTY	PART-NO.
1	TURNTABLE ASSY.	1	WD90-TA
2	ROLLER MOUNTING BRACKET (SWIVEL)	1	WD610-RMS1
3	M20 THREADED BAR x 105mm LONG	1	WD610-113
4	40mm DIA PILLOW BLOCK BEARING	2	Z06-48EC-40
5	M12 x 45mm SETS	6	Z26-085S
6	M12 LOCKNUTS	8	Z23-12
7	BIG ROLLER ASSY (DRIVE)	1	WD610-BRD1
8	BIG ROLLER ASSY (IDLER)	1	WD610-BRI
9	ROLLER ASSY (IDLER)	2	WD65-BRI
10	TPACKING ROLLER ASSY (LONG)	2	WD610-TPL
11	1 1/4" PILLOW BLOCK BEARING	2	Z06-485
12	M14 HEX HD SET x 45nun LONG	8	Z26-103S
13	14mm DIA FLAT WASHER	16	Z11-02-14
14	14mm DIA SPRING WASHER	16	Z12-02-14
15	SLIDING BEARING-STI	4	Z06-47ST
16	M20 THREADED BAR x 135mm LONG	3	WD610-77
17	M20 HEX NUTS	16	Z18-20
18	12mm DIA. SPRING WASHER	12	Z12-02-12
19	12mm DIA. FLAT WASHER	8	Z11-02-10
21	SWIVEL BP-ACKET PIVOT PIN J-50	1	Z03-03-50
22	211 x 1/411 SPLIT PIN	1	Z03-21-29
23	RETAINING PLATE	2	WD610-30
24	M12 HEX HD SETS x 40mm	4	Z26-084S
25	M12 HEX NUTS	6	Z18-12
26	BUFFER SOMM DIA x 42mm LONG	4	Z40-235
27	BALE BELT 1130nun WIDE x 4470mm LONG	1	Z05-02AWV1-93
28	1 1/4" FLANGE BEARING 2 HOLE	4	WD610-CSM
29	M14 HEX NUTS	8	Z18-14

**TANCO AUTOWRAP 1080A/1080ATP MODELS
FILM DISPENSING SYSTEM
PARTS LIST**

ITEM NO	DESCRIPTION	QTY	PART NO
1	FILM DISPENSER UNIT MK9 (70% STRETCH)	1	D616
2	SLEEVE	1	D52012-95
3	M12 x 80 HEX BOLT	1	Z26-0901B
4	SLAVE ROLLER LONG	1	Z06-SR95-L
5	SLAVE ROLLER PIVOT	2	WD64-SRP
6	DISPENSER MAST	1	WD90-DM
7	M16 HEX NUT	8	Z18-16
8	16mm DIA SPRING WASHER	8	Z12-02-16
9	80mm x M16 'U' BOLTS	4	Z35-52
10	DISPENSER MAST MOUNTING BRACKET	1	WD67-DMM
11	M12 x 30 HEX SET	2	Z26-084S
12	M12 HEX NUT	4	Z18-12
13	5mm DIA x 45 ROLL PIN	2	Z03-21-15
14	FILM SPOOL UPPER	1	WD90-11
15	TOP CONE	1	WD90-012
16	CIRCLIP	2	Z28-525
17	FILM SPOOL LOWER	1	WD67-FSU
18	BOTTOM CONE	1	WD90-013
19	SPRING	1	Z07-07
20	PLASTIC CAP 1 1/4" DIA	1	Z39-60
21	BEARING	1	Z06-AWRB
22	M16 LOCKNUT	2	Z23-16
23	1/4" x 2" SPLIT PIN	2	Z01-23-29
24	16mm DIA FLAT WASHER	2	Z10-02-16
25	HYDRAULIC RAM (PULL DOWN)	1	Z01-01-AW25
26	1" G.B. PLASTIC CAP	2	Z32-14
27	M12 X 50 HEX SET	1	Z26-086S
28	M12 LOCKNUT	1	Z23-12
29	12mm DIA SPRING WASHER	1	Z12-02-12
30	FILM PULL DOWN ARM ASSEMBLY	1	WD90-FPDA
31	RETAINING WASHER	1	WD60-859
32	ROLLER	1	WD60-866
33	1" DIA FLAT WASHER	1	Z10-02-30
34	6mm "R" CLIP	1	Z36-03

WD80-PL41

**TANCO AUTOWRAP 1080 A MODEL
VALVE JUNCTION BOX FILTER & DIVERTER VALVE MOUNTING
BRACKET ASSEMBLY**



ITEM NO:	DESCRIPTION:	QTY:	PART NO:
1	VALVE COVER PLATE ASSY	1	WD75-VCP
2	JUNCTION BOX MOUNTING PLATE	1	WD66-041
3	5 BANK SOLENOID VALVE	1	Z01-03-A1070
4	SPACER FOR VALVE	3	WD67-100
5	M8 x 100 HEX SET	3	Z26-057S
6	8mm DIA MUD FLAP WASHER	2	Z11-02-081
7	M6 LOCKNUT (NYLOCK)	2	Z32-06
8	OIL FILTER	1	Z01-24-08
8A	OIL FILTER ELEMENT	1	Z01-24-08E
9	M8 HEX HD SET x 25MM	2	Z26-040S
10	8mm DIA SPRING WASHER	8	Z12-02-08
11	M8 LOCKNUTS	5	Z23-08
12	M6 ALLEN HD SOCKET SCREW x 45mm	2	Z13-020-50
13	OVER-CENTRE VALVE	1	Z01-03-10-A8
14	JUNCTION BOX	1	ZDG-0550A
15	8mm DIA FLAT WASHER	4	Z10-02-08
16	M4 ALLEN HD SOCKET SCREW x 16mm	4	Z26-006
17	M4 LOCKNUT	4	Z23-04
18	M8 x 20 HEX SET	2	Z26-039S
19	M10 x 20 HEX SET	5	Z26-060S
20	10mm DIA FLAT WASHER	3	Z12-02-10

WD75 PLI

**TANCO AUTOWRAP 1080A MODEL
LIFT ARM ASSY
PARTS LIST**

ITEM NO.	DESCRIPTION	QTY	PART-NO
1	CHASSIS ASSY	1	WD67-CHA
2	INNER ARM ASSY	1	WD75-LAI
3	OUTER ARM ASSY	1	WD75-LAO
4	SAFETY SUPPORT ARM	1	WD60-319
5	BALE STOP ASSY	1	WD610-LAS1
6	HYDRAULIC RAM (MAIN ARM)	1	Z01-01-AW107
7	RAM BOTTOM PIVOT PIN	2	Z03-02-330
8	RAM TOP PIVOT PIN	1	Z03-D66-90
9	M 10 HEX HD. SET x 20mm LONG	3	Z26-060ST
10	10mm DIA SPRING WASHER	5	Z1 2-02-10
11	10mm DIA FLAT WASHER	3	Z11-02-10
12	BUFFER 50mm DIA x 40mm LONG	2	Z40-20
13	M10 HEX NUT	2	Z1 8-10
14	1/4" DIA SPLIT PIN x 2' LONG	4	Z03-21-29
15	MAIN FRAME PIVOT PIN CIW GREASE NIPPLE	2	Z03-01-905
16	HYDRAULIC RAM (OUTER FRAME)	1	Z01-01-140S
17	RAM TOP/BOTTOM PIVOT PIN	2	Z03-D66-145
18	BALE STOP RETAINING PIN	1	Z03-04-73
19	7/16" DIA LINCH PIN	1	Z03-22-06

WD64-PL25

TANCO AUTOWRAP 1998 MODEL

HYDRAULIC BALE RAMP

ITEM	DESCRIPTION:	QTY:	PART NO:
1	HYDRAULIC BALE RAMP ASSY	1	WD65-HBRF
2	RAMP MAIN PIVOT PIN C/W GREASE NIPPLE	2	Z03-01-905
3	M10 HEX HD SET X 20mm LONG TUFLOCK	2	Z26-060ST
4	10MM DIA MACHINED FLAT WASHER	2	Z11-02-10
5	10MM DIA SPRING WASHER	12	Z12-02-10
6	BALE MAT	1	Z05-02-BRH
7	M10 X 30MM LONG CUP HD.SQ BOLTS	5	Z13-112
8	M10 HEX NUTS	5	Z18-10
9	HYDRAULIC RAM C/W ACCUMULATOR	1	Z01-01-AWD
10	SPAREX PIN	1	Z03-04-74
11	SPAREX PIN	1	Z03-04-73
12	7/16 DIA LINCH PIN	2	Z03-22-06
13	ACCUMULATOR MOUNTING PLATE	1	WD65-AMP
14	CLAMPING PLATE	1	WD65-231
15	M8 HEX HD BOLT X 80MM LONG	4	Z26-050B
16	M8 LOCKNUT	4	Z23-08
17	M28 X 1.5 PITCH HEX NUT	1	Z18-28

FAULT FINDING

PROBLEMS.

REMEDY.

1. Drive Roller and Bale belt not driving
Check and replace shear Pins in sprocket on drive roller.
2. Film Breaking
Wash off dispenser and slave rollers. Change roll of film. Use recommended films only.
3. Film not wrapping evenly on bale.
Adjust film mast so centre of film roll is aligned with centre of bale .
4. Film Tearing on Ramp.
Check for sharp edges and remove.
5. Bale Skidding on Ramp.
Fit Hessian Bag or piece of carpet to Ramp.
6. Film Dispenser not Pre-Stretching Film.
Check that both Rollers turn when one is turned by hand. If not, fit new gears or replace unit.
7. Tyres coming off 4" platform Support Wheels.
Replace Wheels - Reduce speed below 30 r.p.m. - Do not grease path of wheels on platform. Check that bale does not get trapped between arms and turntable when being loaded.

If this happens lower arm and start again.
8. Hydraulic Bale Ramp not returning to raised position after tipping off bale.
See instructions for recharging hydraulic cylinder.
9. Bale Belt Tracking Adjustment
 - (i) Ensure vertical rollers (plastic) are in tight on the bale. Remember that the bale will reduce in size during wrapping and, on the round bales in particular, the corners will become rounded so that the bale will tend to move sideways due to centrifugal forces. Now, if the plastic rollers are too far apart, the bale will move against one of the plastic rollers causing the belt to move in the opposite direction. Always adjust the vertical plastic rollers so that they keep the bale central on the belt.
 - (ii) Adjust bale stop on lift arm so that bale is loaded centrally onto platform.
 - (iii) Check that bale belt is fitted so arrow points in direction of travel.
 - (iv) Check that both 8" rollers underneath the bale belt are parallel to each other. Remember the golden rule - a belt will always move up a slope: So, if the belt continually moves to our side, adjust idler roller to a narrower setting on the opposite side to which the belt travels.
 - (v) Check that gripface strips are securely fixed to the roller and have not moved out of alignment.
 - (vi) Check that is the same measurement each side by running a string around the belt and measuring it. If one side is longer than the other replace the belt.

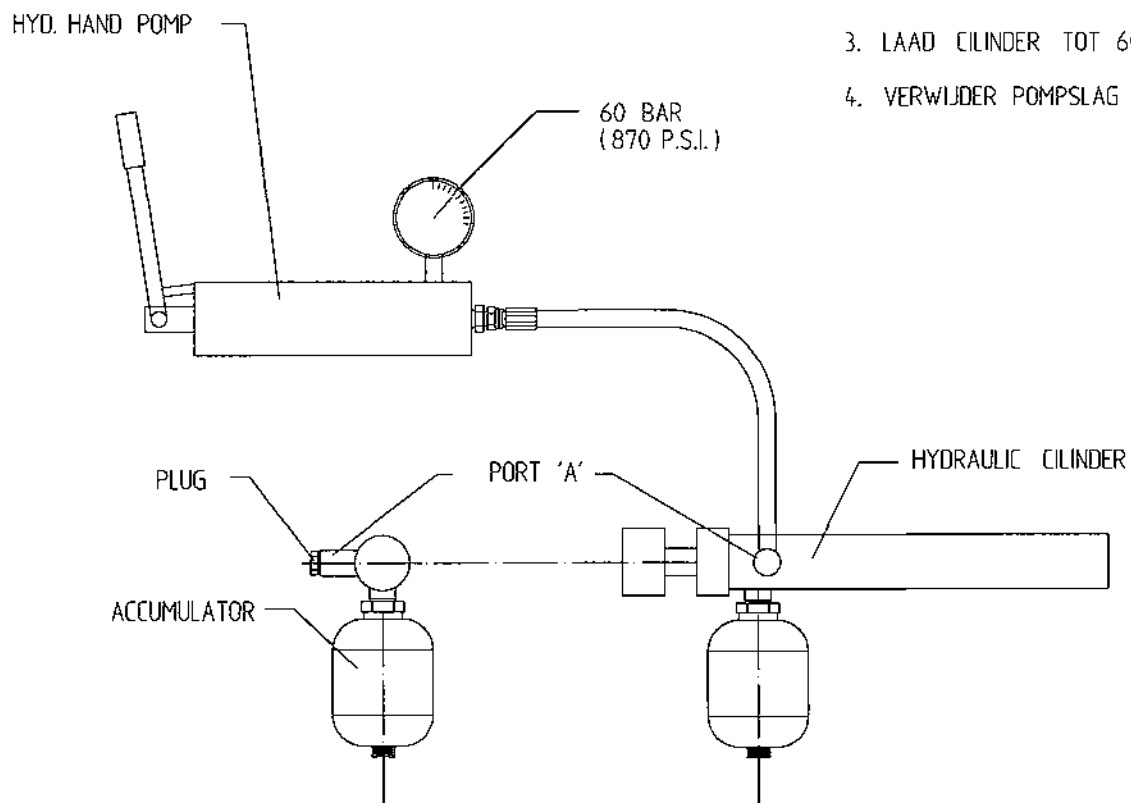
**TANCO AUTOWRAP
HYDRAULIC CUT AND START UNIT
PARTS LIST**

ITEM NO.	DESCRIPTION	QTY	PART NO.
1	HYDRAULIC CUT AND START MAIN FRAME	1	WD605H-MF
2	M10 x 25 HEX SET	1	Z26-061S
3	LOCKING COLLAR	1	Wi60-090
4	GRIPPER ROD	1	WD605H-13
5	H6 X 25 HEX SET	1	Z26-0405
6	BLADE	1	605-104
7	SPRING	1	Z07-49
8	GRIPPER PAD (RUBBER)	1	Z40-28
9	GRIPPER PAD	1	WD605H-15
10	M8 X 10 GRUB SCREW	1	Z28-008
11	M 14 HEX NUT	3	Z18-14
12	14MM SPRING WASHER	2	Z12-02-14
13	CUT & START HYDRAULIC RAM ACCUMULATOR	1	ZOI-OI-AWH
14	8MM FLAT WASHER	2	Zii-02-08
15	M8 LOCK NUT	2	Z23-08
16	M 10 LOCK NUT	4	Z23-010
17	M10 X 75 HEX BOLT	4	Z26-069B
18	10mm DIA SPRING WASHER	1	Z12-02-10

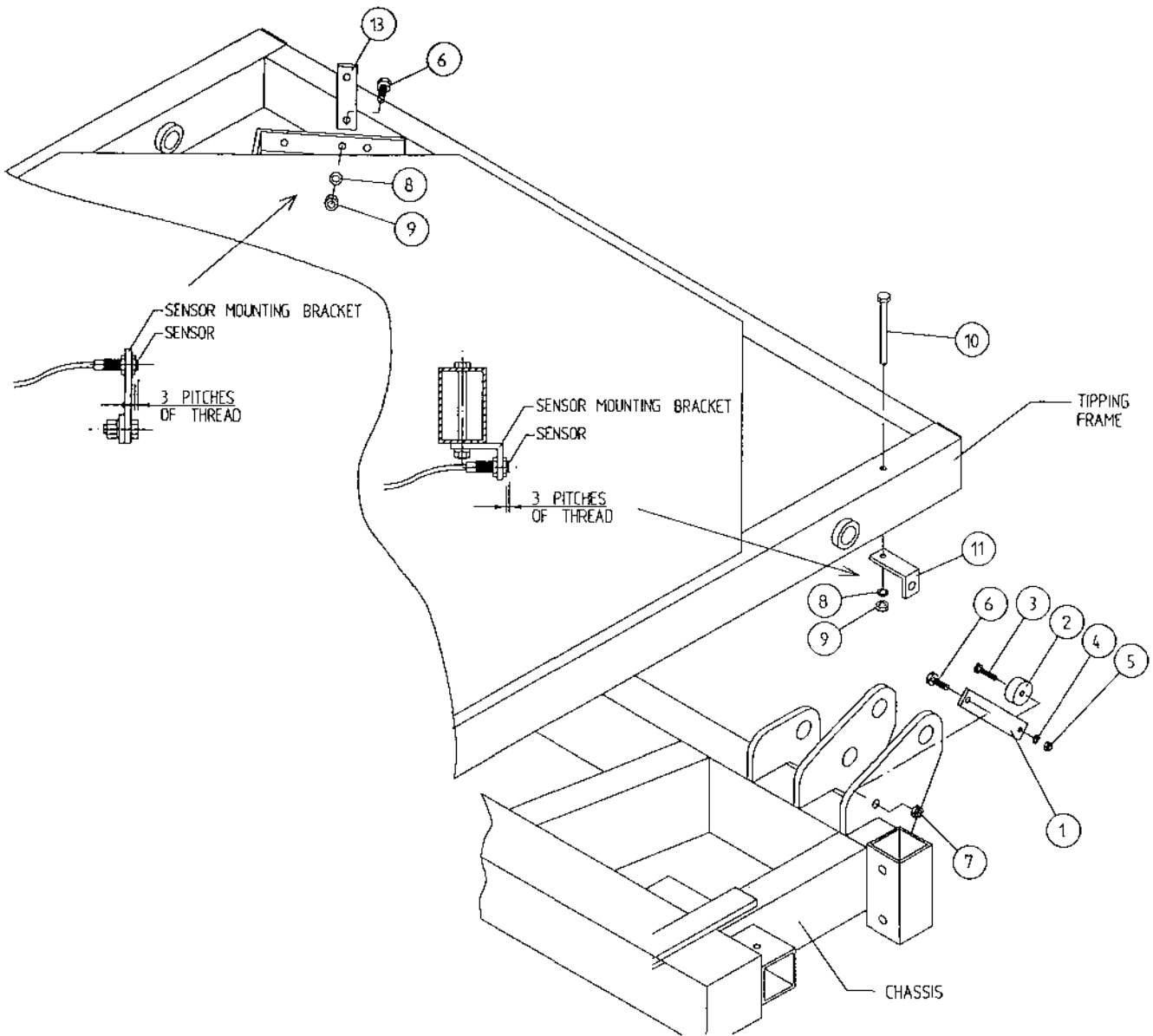
TANCO AUTOWRAP - HYDRAULIC CUT AND START

INSTRUCTIE VOOR HET OPLADEN HYDRAULISCHE CILINDER

1. VERWIJDER PLUG UITM PORT "A" .
2. VERBIND SLANG VAN HYD. HAND POMP MET PORT "A" .
3. LAAD CILINDER TOT 60 BAR (870 P.S.I.)
4. VERWIJDER POMPSLAG EN STOP DE PLUG WEER IN "A" .



TANCO AUTOWRAP CUT AND START SENSOR AND MAGNET MOUNTING BRACKETS



PARTS LIST

ITEM NO	DESCRIPTION	QTY	PART NO.
1	MAGNET MOUNTING BRACKET	1	WD605-165
2	MAGNET	1	D6034
3	M6 HEX HD. SET x 30mm LONG	1	Z26-022S
4	6mm DIA FLAT WASHER	1	Z12-02-06
5	M6 LOCKNUT	1	Z23-06
6	M8 HEX HD. SET x 25mm LONG	2	Z26-040S
7	M8 LOCKNUT (NYLOCK)	1	Z23-08
8	8mm DIA SPRING WASHER	2	Z12-02-08
9	M8 HEX NUT	2	Z18-08
10	M8 HEX HD. SET x 100mm LONG	1	Z26-057S
11	SENSOR MOUNTING BRACKET	1	WD605-58
12	SENSOR MOUNTING FLAT	1	WD605-164

