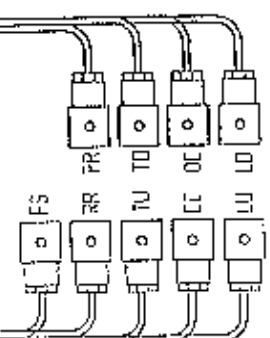
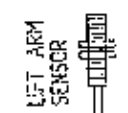
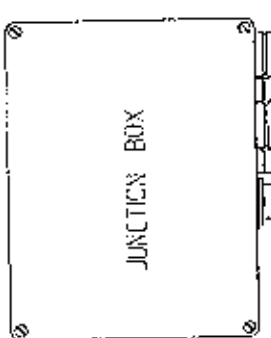
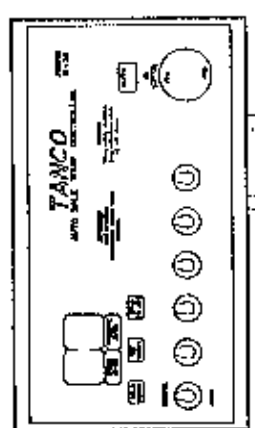
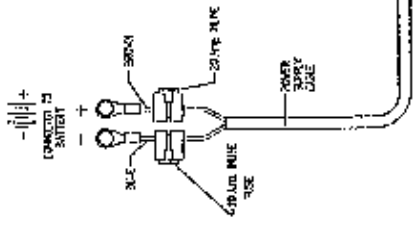


TANCO AUTOWRAP
1060A MODEL 1998
OPERATORS HANDBOOK
AND
PARTS-LIST
WD66-1060-A-M0398

**TANCO AUTOWRAP 550A/1050A MODELS
JUNCTION AND CONTROLLER**



FILE NAME 9827 A

TANCO AUTOWRAP CONSTANT INDEXING GEARBOX CHAIN DRIVE TENSIONING SYSTEM

CHAIN TENSIONING PROCEDURE

1. LOOSEN M10 BOLT SECURING CHAIN TENSOR
2. TENSION CHAIN BY ADJUSTING TENSOR USING SPANNER IN DIRECTION OF ARROW "X" UNTIL SETTING OF 15-20 IS REACHED.
3. RE-TIGHTEN M10 BOLT TO SECURE TENSOR IN POSITION.

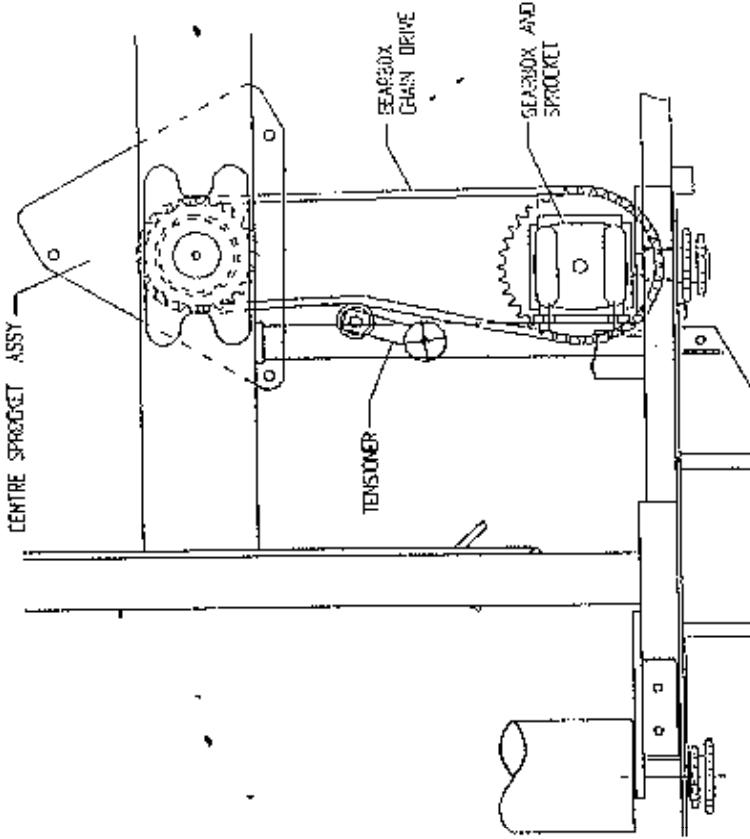
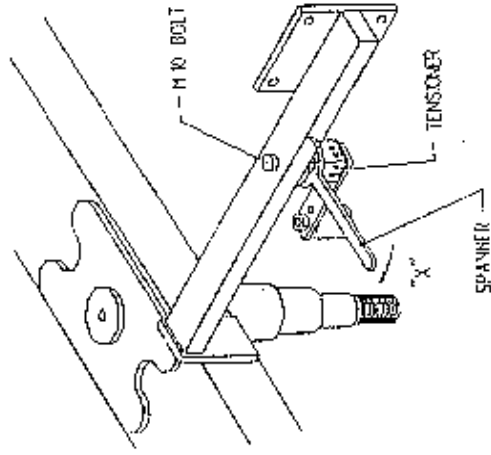


Fig. 2



ROLLER CHAIN DRIVE TENSIONING SYSTEM

CHAIN TENSIONING PROCEDURE

1. LOOSEN M10 BOLT SECURING CHAIN TENSOR
2. TENSION CHAIN BY MOVING CHAIN TENSOR INWARDS IN SLOT
3. RE-TIGHTEN M10 BOLT TO SECURE TENSOR IN POSITION.

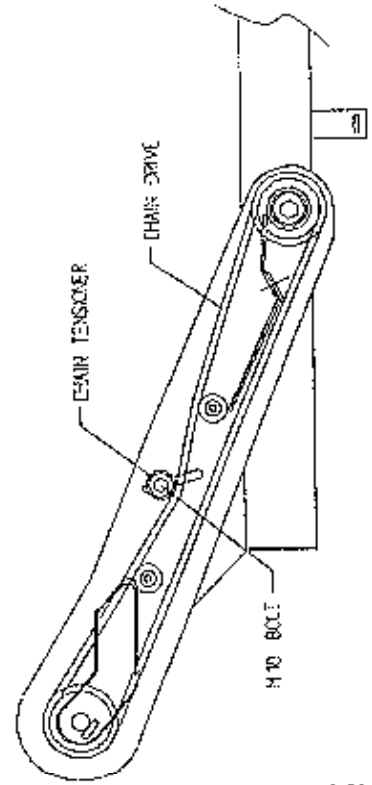


Fig. 3

TANCO AUTOWRAP 1060 MODELS
BALE BELT TRACKING

This machine is fitted with a continuous belt which has a natural tendency to float due to variations in bale shape centrifugal forces etc. However if the following instructions are followed closely the final setting for tracking the belt can be arrived at over a maximum of two or three bales in the field. The ideal settings will ensure that the belt will always return to a central line

Prior to despatch from our works the belt is centralised on the machine and the belt adjuster and belt tracking rollers are adjusted to the settings on the drawing B.T.I attached.

The belt adjuster roller (item 1) is initially set slightly offset to the drive roller, see A & B. Its primary function is to control the sag in the belt so that the centre of the bale is high enough to ensure that it is fully wrapped correctly on the ends but may also require adjustment to control the belt on the drive roller (see belt tracking procedure below).

The belt tracking roller is purposely set out of line to the top roller, see C & D. Its function is to put tension on one side of the belt to counteract the tendency of the belt to move sideways. The bale will always try to move away from the chain drive side of the machine until it touches the plastic end roller at the other side, at which point the bale will attempt to move away from the bale and towards the chain drive side.

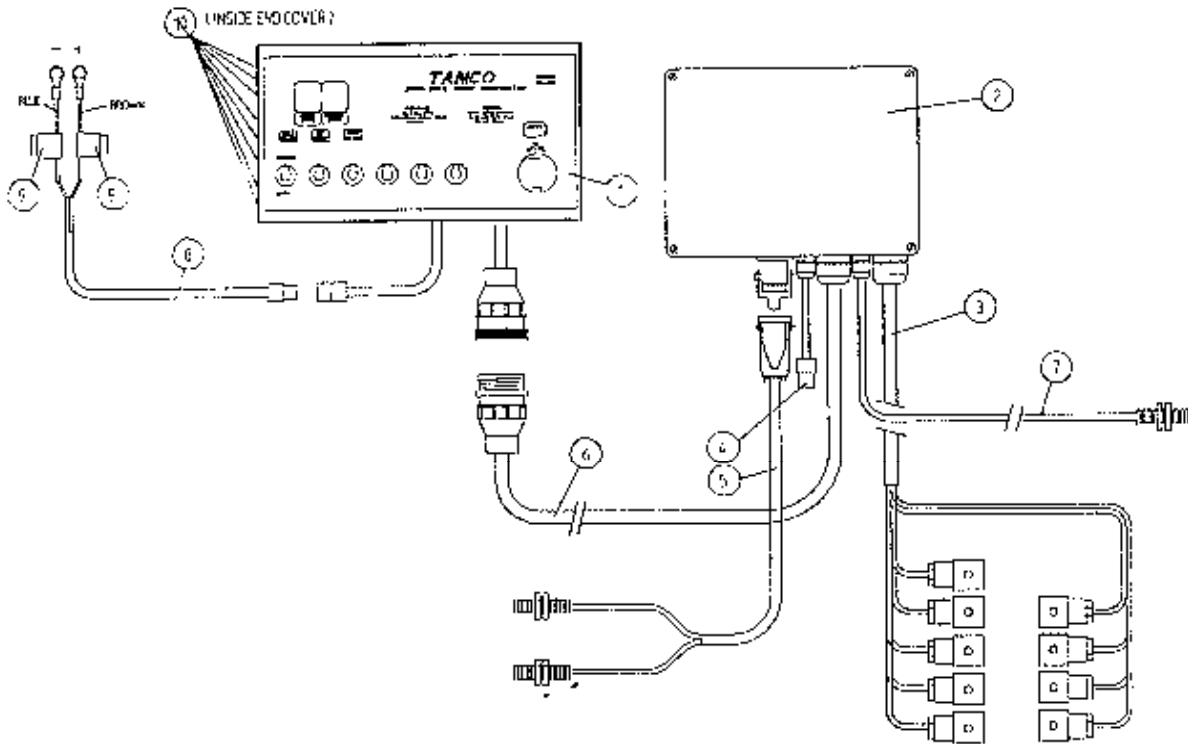
The degree of offset of the tracking roller (item 2) may need adjustment to control the belt on the idler roller.

BELT TRACKING PROCEDURE

1. Ensure the belt tracking roller is adjusted to the initial settings at C & D, (see drawing), and that the belt adjuster roller is adjusted to settings at A & B.
2. Load bale and rotate turntable for approx. 20 revolutions without film being applied and observe if belt moves.
3. If the belt moves more than 30mm out of line, observe which roller it moves on and in which direction it moves then adjust the appropriate roller inwards on the side the belt moves away from in 5mm increments until the belt stays relatively central.
4. Attach film and commence wrapping the bale manually whilst making adjustments as per 3 above.
5. Tip off bale then fresh bale and again wrap using manual controls. If adjustments have not been excessive on any one roller then the belt should now run central.
6. Load next bale and commence wrapping in auto mode whilst observing how the belt behaves. If the belt movement is less than 30mm on either roller do not adjust again but continue wrapping bales.

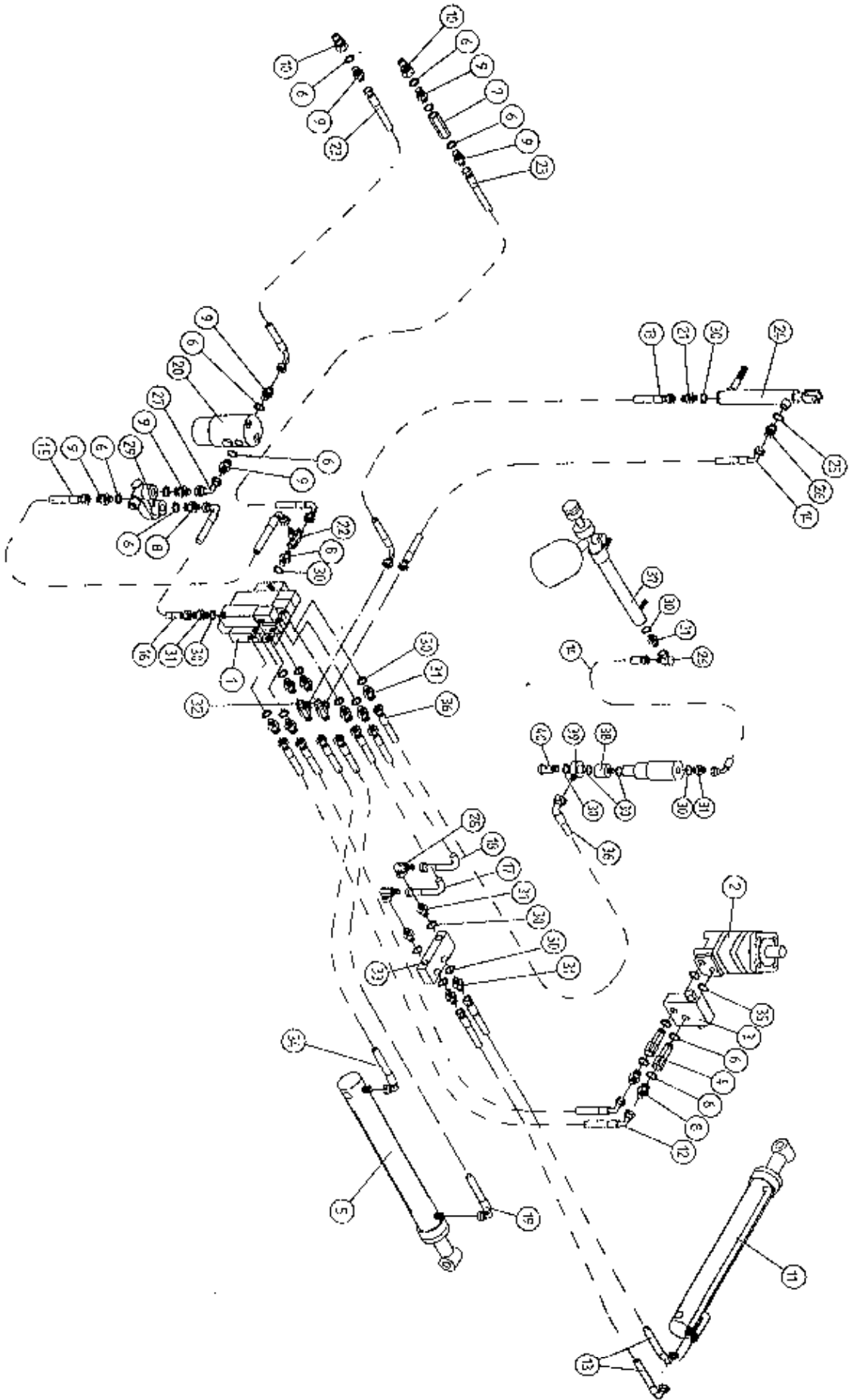
NOTE: The belt will always move because each bale is different, but provided it runs reasonably central it should not require any further adjustments.

TANCO AUTOWRAP 550A/1060A MODELS ELECTRIC COMPONENTS



ITEM No.	PARTS LIST	QTY.	PART No.
1	CONTROLBOX	1	D606
2	JUNCTION BOX	1	ZDG-0550A
3	LOOM FOR VALVE C/W HERSCHMAN (4 BANK)	1	ZD606-081H
4	CLOSED CENTRE HYDRAULICS LEAD	1	ZD606-070
5	TWIN SENSOR LEAD C/W HEARTING PLUG	1	ZD606-075
6	24 CORE INTERCONNECTING LEAD C/W CONNECTORS	1	ZD605-24C
7	LIFT ARM SENSOR	1	ZD606-LAS
8	MAIN BATTERY LEAD	1	ZD606-030
9	IN LINE FUSE	1	ZD606-100
10	20 X 5 FUSE 6.3AMP	8	ZD605-0660

TANCO AUTOWRAP 550 A / 1080A MODELS
HYDRAULIC COMPONENTS



FILE NAME: WDS7-PL17

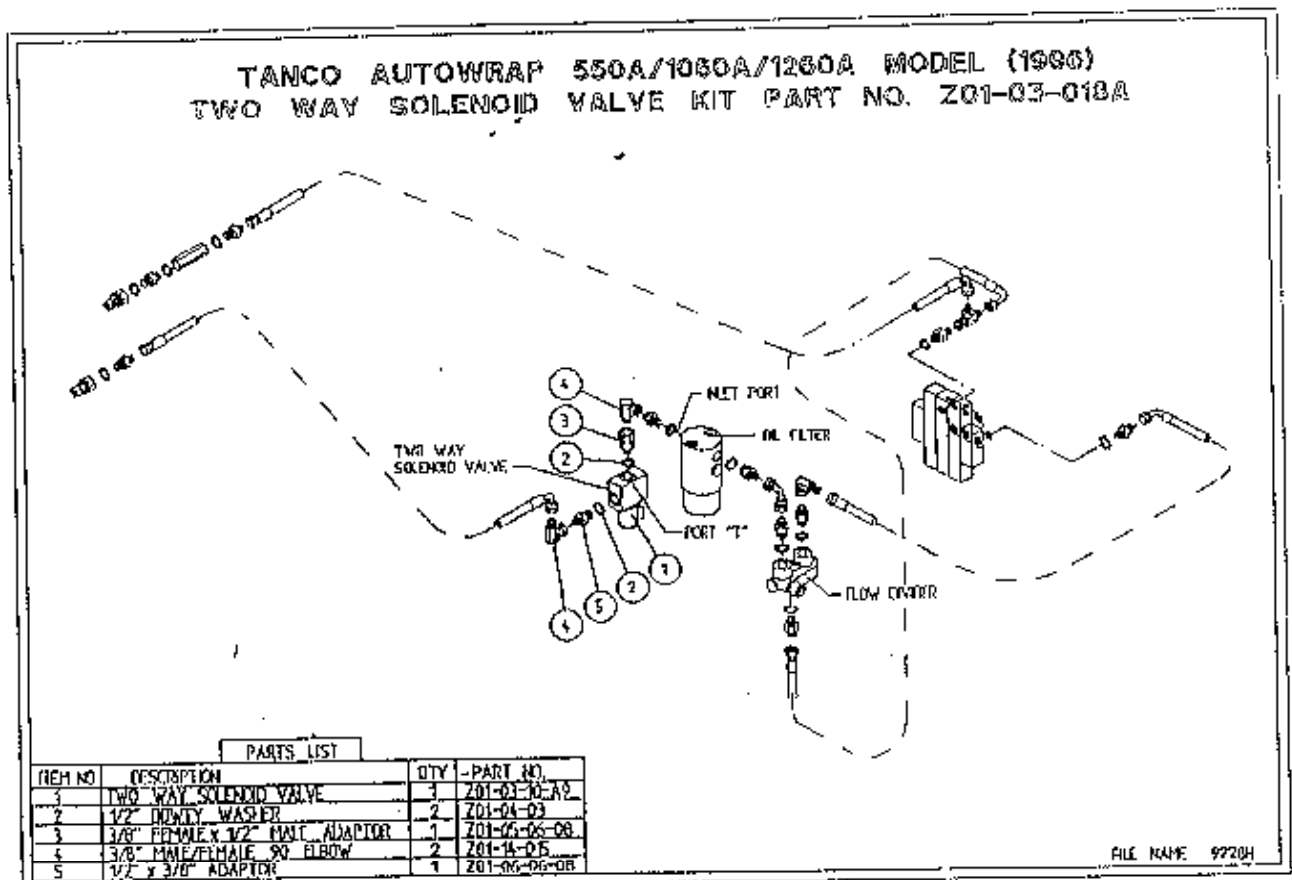
TANCO AUTOWRAP 550A/1060A MODELHYDRAULIC COMPONENTSPARTS LIST

ITEM NO.	DESCRIPTION	QTY	PART-NO
1.	4 BANK SOLENOID VALVE	1	Z01-03-A550
2.	HYDRAULIC MOTOR C.L.	1	Z01-02-RF200
3.	CROSS LINE RELIEF VALVE	1	Z01-03-004
4.	½" B.S.P. BOTTOM BANJO BOLT (SPECIAL)	2	Z01-03-002B
5.	HYDRULIC RAM (TIPPING FRAME)	1	Z01-01-AR687
6.	½" DOWTY WASHER	12	Z01-04-03
7.	½" NON RETURN VALVE	1	Z01-03-017
8.	½" X 3/8" ADAPTOR	4	Z01-06-06-08
9.	½" X ½" ADAPTOR	8	Z01-06-08-08
10.	½" MALE END Q/R COUPLING	2	Z01-15-081
11.	HYD.RAM (FOR LIFT ARM)	1	Z01-01-AW
12.	108" ST/90 3/8" D/W HOSE	3	Z38-R2-108-S9
13.	72" ST/90 3/8" D/W HOSE	3	Z38-R2-72-S9
14.	84" ST/90 3/8" D/W HOSE	1	Z38-R2-84-S9
15.	24" ST/90 ½" D/W HOSE	1	Z12-R2-24-S9
16.	24" ST/90 3/8" D/W HOSE	1	Z38-R2-24-S9
17.	12" ST/ST 3/8" D/W HOSE	2	Z38-R2-12-SS
18.	9" ST/ST 3/8" D/W HOSE	1	Z38-R2-9-SS
19.	48" ST/90 3/8" D/W HOSE	1	Z38-R2-48-S9
20.	FILTER	1	Z01-24-06
21.	3/8" X 3/8" ADAPTOR FITTED, WITH 0.06" RESTRICTOR.	1	Z01-03-40
22.	½" MALE X ½" MALE X ½" FEMALE "T" PIECE	1	Z01-12-003
23.	108" ST/90 ½" D/W HOSE	2	Z12-R2-108-S9
24.	HYD. RAM D/A (PULL DOWN ARM)	1	Z01-01-AW25
25.	¼" DOWTY WASHER	1	Z01-04-01
26.	1/4" X 3/8" ADAPTOR	1	Z01-06-04-06
27.	½" FEMALE X ½" FEMALE 90 ELBOW	1	Z01-14-018
28.	3/8" MALE/FEMALE 90 ° ELBOW	3	Z01-14-015
29.	IN LINE FLOW DIVIDER	1	Z01-03-10-A6
30.	3/8" DOWTY WASHER	18	Z01-04-02
31.	3/8" X 3/8" ADAPTOR	14	Z01-06-06-06
32.	3/8" MALE X 3/8" MALE X 3/8" FEMALE "T" PIECE	2	Z01-12-002
33.	OVER CENTRE VALVE	1	Z01-03-10-A8
34.	30" ST/90 3/8" D/W HOSE	2	Z38-R2-30-S9
35.	COPPER WASHER	2	Z01-04-15
36.	96" ST/90° 3/8" D/W HOSE	1	Z38-R2-96-SG
37.	CUT & START RAM	1	Z01-01-ANH
38.	ROTARY COUPLING	1	Z01-02-ANR
39.	3/8" BANJO COUPLING	1	Z01-19-062
40.	3/8" SINGLE TOP BANJO BOLT	1	Z01-20-062

**INSTRUCTION FOR FITTING TWO WAY SOLENOID VALVE TO TANCO
AUTOWRAP 550A, 1060A, 1260A MODELS.**

**REQUIRED WHEN OPERATING MACHINES ON TRACTORS WITH CLOSED CENTRE
HYDRAULIC SYSTEMS.**

1. Disconnect st/90 hose from inlet port on oil filter.
2. Connect port "T" on solenoid valve assembly to inlet port on oil filter.
3. Reconnect st/90 hose to port "P" on solenoid valve.
4. Connect 2 pin female connector to existing 2 pin connector at junction box.
5. Change the seventh controller function setting from n to J. See instruction manual for further information.



TANCO AUTOWRAP 1.060 MODELS
CONSTANT INDEXING DRIVE ASSEMBLY

PARTS LIST

ITEM NO.	DESCRIPTION	QTY	PART-NO.
1.	TURNTABLE ASSY.	1	WD610-TA2
2.	TIPPING FRAME ASSY.	1	WD64-TF
3.	DRIVE ROLLER ASSY.	1	WD610-BRD1
4.	GEAR BOX	1	Z01-25-300
5.	M12 HEX HD SET x 30mm LONG	4	Z26-082S
6.	12mm DIA SPRING WASHER	7	Z12-02-12
7.	CHAIN TENSIONER	2	WD60-CT
8.	CENTRE SPROCKET ASSY 27 TOOTH	1	WD64-CSA
9.	M12 HEX HD SET x 25mm LONG	3	Z26-081S
10.	46 TOOTH SPROCKET	1	Z06-D64-46S
11.	M10 HEX HD SET x 25mm LONG	3	Z26-0611S
12.	10mm DIA SPRING WASHER	9	Z12-02-10
13.	RETAINING COLLAR	3	WD623-071
14.	CHAIN 3/4" PITCH x 87 PITCHES	1	Z09-AW-5
15.	ROSTA TENSIONING UNIT ARM	1	Z06-454
16.	SPROCKET	1	Z06-D610-1620
17.	M10 HEX HD BOLT x 65mm LONG	1	Z26-0671B
18.	SPROCKET	1	Z06-D610-20K
19.	M10 LOCKNUT	1	Z23-10
20.	CHAIN 3/4" PITCH x 50 PITCHES	1	Z09-AW-52
21.	CHAIN 3/4" PITCH x 98 PITCHES	1	Z09-AW-54
22.	CHAIN STRIPPER	1	WD610-185
23.	SPACER	2	WD610-207
24.	10mm DIA FLAT WASHER	5	Z10-02-10
25.	M10 HEX HD SET x 30mm LONG	3	Z26-062S
26.	KEY 12mm x 10mm x 55mm LONG	1	WD610-198
27.	M10 CUP SQ. SCREW x 30mm LONG	1	Z13-112
28.	M10 HEX HD BOLT x 80mm LONG	1	Z26-0691B
29.	CHAIN GUARD (SMALL)	1	WD610-CGS1
30.	CHAIN GUARD (LARGE)	1	WD610-CGL1
31.	M10 HEX HD SET X 25MM LONG (TUFLOCK)	3	Z26-061S
32.	SPROCKET/BACKET PIVOT SHAFT	1	WD610-71
33.	1" DIA UNC LOCKNUT	1	Z23-251
34.	1" H/D FLAT WASHER	2	Z10-02-25
35.	LOCKING PLATE	2	WD623-060
36.	CHAIN GUIDE	2	WD610-199
37.	SPROCKET	1	Z06-D65-1316S
38.	M6 GRUB SCREW	2	Z28-006
39.	CHAIN TENSIONER BRACKET	1	WD610-CTB1
40.	CHAIN TENSIONER BLOCK ASSY INNER	1	WD610-TBI1
41.	CHAIN TENSIONER BLOCK ASSY OUTER	1	WD610-TBO1
42.	SPRING 14.5MM O.D. X 1.6MM WIRE X 60MM LONG	1	Z07-48
43.	M10 HEX HD SET X 40MM LONG	1	Z26-064S
44.	OILITE BUSH	2	Z06-106
45.	GUARD	1	WD64-021
46.	GUARD	1	WD64-020
47.	M8 HEX HD SETS x 20mm LONG	6	Z26-020S
48.	8mm DIA SPRING WASHER	6	Z12-02-08
49.*	MAGNET	2	D6043
50.*	M6 CSK HD SET x 35mm LONG	2	Z13-132
51.*	6mm DIA FLAT WASHER	2	Z11-02-06
52.*	M6 LOCKNUT	2	Z23-06
53.	SPIRAL PIN	2	Z03-23-062

* DENOTE ADDITIONAL ITEMS REQUIRED FOR AUTOMATIC MACHINES

**TANCO AUTOWRAP 1060 MODELS
PARTS LIST**

ITEM	DESCRIPTION	QTY	PART NO.
1	CHASIS ASSY	1	WD67-CHA
2	STUB AXLE (LONG)	1	Z04-0336
3	WHEELS (STANDARD WIDTH)	2	Z04-0336
	(WIDE)	2	Z04-04
4	WHEELS NUTS (WIDE)	10	M22AWNA
5	BISSEL PIN	1	WD60-861
6	M10 HEX NUT	3	Z18-10
7	HYD RAM	1	Z01-01AR687
8	RAM BOTTOM PIVOT PIN	1	Z03-02-330
9	RAM TOP PIVOT PIN	1	Z03-03-50
10	2" X 1/4" SPLIT PIN	2	Z03-21-29
11	TIPPING FRAME ASSY	1	WD64-TF
12	TIPPING FRAME PIVOT PIN C/W GREASE NIPPLE	2	Z03-01-9055
13	BELT GUIDE ASSEMBLY	1	WD610-BG1
14	BELT GUIDE ASSEMBLY	1	WD610-BG2
15	INNER BEARING	2	M22AB-209
16	SCREW JACK ASSEMBLY (WELD ON)	1	WD60-JA
17	M8 HEX HD SETS X 20MM LONG	4	Z26-039S
18	M8 HEX NUTS	14	Z18-08
19	8MM DIA FLAT WASHERS (MUD FLAP)	8	Z11-02-081
20	8MM DIA SPRING WASHERS	12	Z12-02-08
21	SCRAPER	2	WD60-711
22	STUB AXLE SHORT	1	Z04-032
23	4 MM "R" CLIP	1	Z36-02
24	RING HITCH ASSY (LONG)	1	WD65-HIT
25	M16 HEX HD SET X 25MM LONG	4	Z26-124S
26	M16 LOCKNUTS	4	Z23-16
27	M10 HEX HD SET X 25MM LONG	2	Z26-06DSY
28	10MM DIA MACHINED FLAT WASHER	2	Z11-02-10
29	TURN TABLE ASSY	1	WD610-TA2
30	10MM DIA SPRING WASHER	5	Z12-02-10
31	SUPPORT WHEELS	4	Z06-466
32	AXLE ASSY C/W GREASE NIPPLE	4	Z03-22-AW/AX
33	M20 LOCKNUTS	4	Z23-20
34	TURN TABLE COVER PLATE	1	WD60-093
35	SPACER	8	WD60-198
36	OUTER BEARING	2	M22AB-206
37	FILM TRANSPORT BRACKET	1	WD60-FTB1
38	CLAMPING PLATE	1	WD60-933
39	M10 HEX HD BOLT X 140MM LONG	3	Z26-0726B
40	PLASTIC CAP	2	Z32-08
41	M10 HEX HD BOLT X 80MM LONG	1	Z26-0691B
42	M10 LOCK NUT	1	Z23-10

TANCO AUTOWRAP
TURNTABLE CHAIN DRIVE ASSEMBLY

PARTS LIST

ITEM NO	DESCRIPTION	QTY	PART NO
1	TIPPING FRAME ASSY	1	WD64-TF
2	38 TOOTH x 1" PITCH SPROCKET	1	Z06-D64-38
3	CHAIN 1" PITCH x 54 PITCHES	1	Z09-AW6
4	SPINDLE SPACER	1	WD64-040
5	KEY 5/8" SQ x 50mm LONG	2	WD64-052
6	15 TOOTH x 1" PITCH SPROCKET	1	Z06-I60-046
7	KEY 5/16" SQ x 45mm LONG	1	WD64-053
8	LOCKING COLLAR	1	WD623-071
9	10mm DIA SPRING WASHER	1	Z12-02-10
10	3/8" UNC HEX HD SET x 1" LONG	1	Z27-023S
11	2" DIA FLANGE BEARING C/W CAM LOCK COLLAR	1	Z06-49EC
12	5/8" UNF HEX HD SET x 2" LONG	4	Z31B-064
13	5/8" UNF LOCKNUT	4	Z20-10
14	HYDRAULIC MOTOR	1	Z01-02-RF200
15	HYDRAULIC MOTOR MOUNTING PLATE	1	WD64-001
16	M12 x 50mm ALLEN HD C/S SCREW	4	Z13-5-12X50
17	M12 HEX HD SET x 30mm LONG	4	Z26-082S
18	12mm DIA SPRING WASHER	6	Z12-02-12
19	12mm DIA FLAT WASHER	6	Z10-02-12
20	M16 THREADED BAR x 150mm LONG	1	WD64-038
21	M16 HEX NUTS	4	Z18-16
22	SPACER	1	WI60-093
23	M12 LOCKNUTS	4	Z23-12
24	M12 HEX HD SET x 50mm LONG	2	Z26-086S
25	DRIVE CHAIN GUARD	1	WD66-DCG
26	M12 HEX NUT	2	Z18-12
27	M6 HEX NUT	1	Z18-06
28	M6 90 DEGREE GREASE NIPPLE	1	Z39-65
29	M12 GRUB SCREW x 16mm LONG	2	Z28-012

WD61-PL30

TANCO AUTOWRAP 1060 MODELS
BALE BELT ROLLER MOUNTING BRACKETS

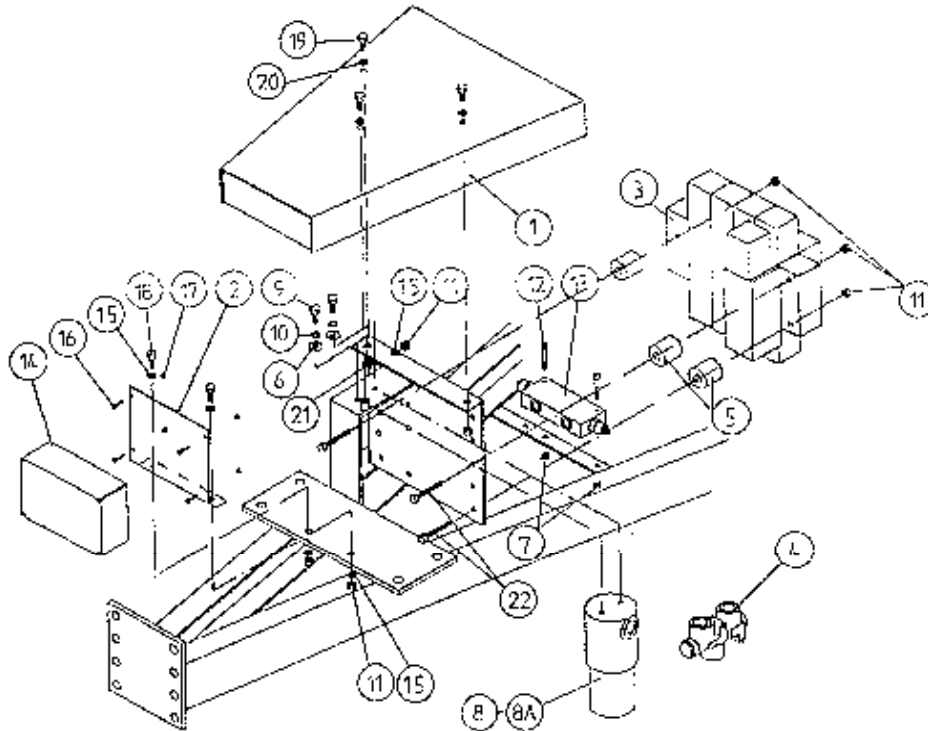
PARTS LIST

ITEM NO.	DESCRIPTION	QTY	PART-NO.
1.	TURNTABLE ASSY.	1	WD610-TA2
2.	ROLLER MOUNTING BRACKET (SWIVEL)	1	WD610-RMS1
3.	ROLLER MOUNTING BRACKET (FIXED)	1	WD610-RM1
4.	ROLLER MOUNTING BRACKET (FIXED)	1	WD610-RM2
7.	BIG ROLLER ASSY (DRIVE)	1	WD610-BRD1
8.	BIG ROLLER ASSY (IDLER)	1	WD610-BRI
9.	ROLLER ASSY (IDLER)	2	WD65-BRI
10.	TRACKING ROLLER ASSY (LONG)	2	WD610-TR1
11.	1 1/4" PILLOW BLOCK BEARING	6	Z06-485
12.	M14 HEX HD SET x 45mm LONG	8	Z26-1038
13.	14mm DIA FLAT WASHER	24	Z11-02-14
14.	14mm DIA SPRING WASHER	24	Z12-02-14
15.	SLIDING BEARING STY	4	Z06-47ST
16.	M20 THREADED BAR x 135mm LONG	3	WD610-77
17.	M20 HEX NUTS	16	Z18-20
18.	12mm DIA. SPRING WASHER	12	Z12-02-12
19.	12mm DIA. FLAT WASHER	12	Z11-02-10
21.	SWIVEL BRACKET PIVOT PIN J-50	1	Z03-03-50
22.	2" x 1/4" SPLIT PIN	1	Z03-21-29
23.	RETAINING PLATE	2	WD610-30
24.	M12 HEX HD SETS x 35mm	8	Z26-0838
25.	M12 HEX NUTS	10	Z18-12
26.	BUFFER 50MM DIA x 42mm LONG	4	Z40-235
27.	BALE BELT 1130mm WIDE x 4470mm LONG	1	Z05-02AWV1-23
28.	CUT AND START MOUNTING FRAME	1	WD610-CSM
29.	M14 HEX NUTS	8	Z18-14
30.	M12 HEX HD SETS x 25mm LONG	4	Z26-0815
31.	M14 HEX HD SET x 50mm LONG	8	Z26-1048
32.	M20 THREADED BAR x 105mm LONG	1	WD610-113
33.	40mm DIA PILLOW BLOCK BEARING	2	Z06-48EC-40

TANCO AUTOWRAP TRAILED MODELSFILM DISPENSING SYSTEM
PARTS LIST

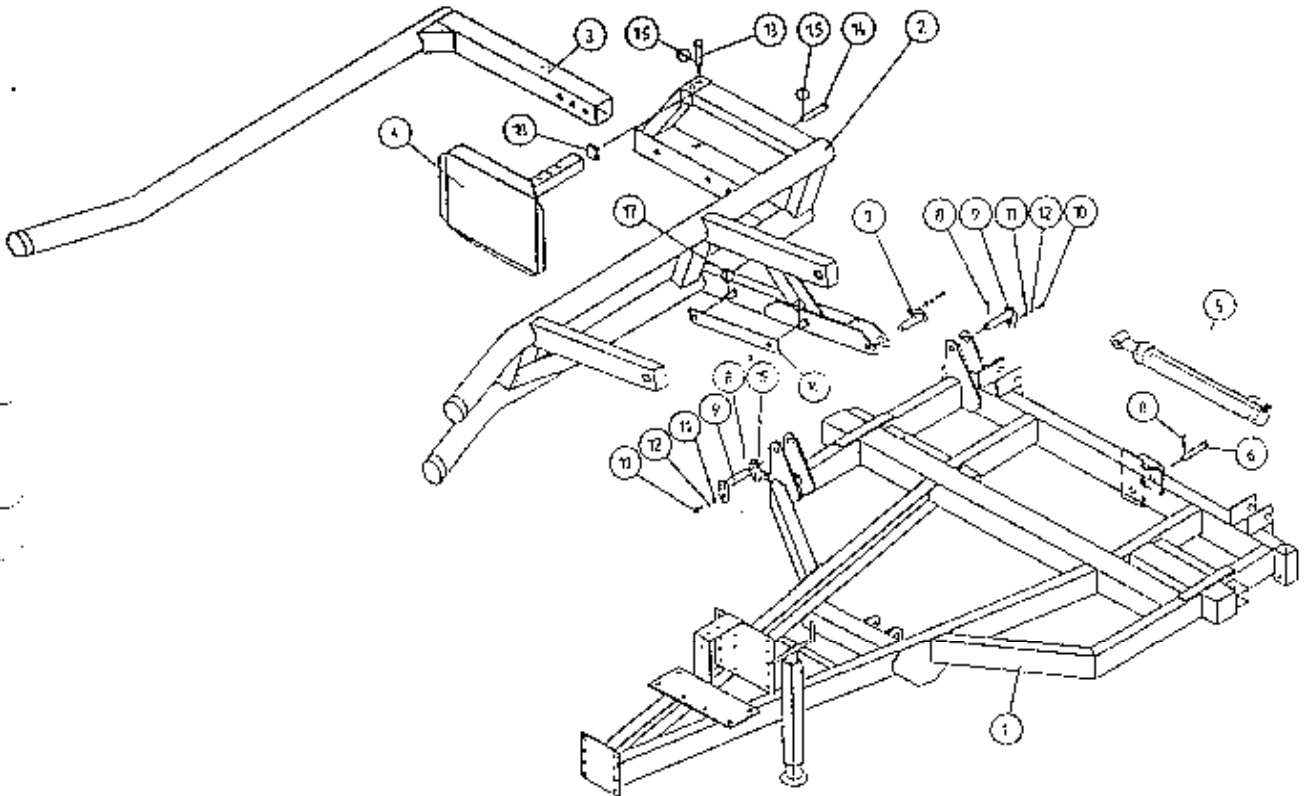
ITEM NO:	DESCRIPTION:	QTY:	PART NO:
1	FILM DISPENSER UNIT MK9 (66% STRETCH)	1	D6161
2	SLEEVE	1	D52012-95
3	M12 X 80 HEX BOLT	2	Z26-0901B
4	SLAVE ROLLER LONG	1	Z06-SR95-L
5	SLAVE ROLLER PIVOT	2	WD64-SRP
6	DISPENSER MAST	1	WD69-DM
7	M16 HEX NUT	8	Z18-16
8	16MM SPRING WASHER	8	Z12-02-16
9	80MM M16 'U' BOLTS	4	Z35-52
10	DISPENSER MAST MOUNTING BRACKET	1	WD67-DMM
11	M12 X 40 HEX SET	2	Z26-084S
12	M12 HEX NUT	2	Z18-12
13	5 X 45 ROLL PIN	2	Z03-21-15
14	FILM SPOOL LOWER	1	WD67-FSL
15	FILM MAST CONE	2	Z06-45-03
16	CIRCLIP	2	Z28-52S
17	FILM SPOOL UPPER	1	WD67-FSU
18	12MM SPRING WASHER	4	Z12-02-12
19	M12 X 30 HEX SET	4	Z26-082S
20	1/8 B.S.P. STRAIGHT GREASE NIPPLE	1	Z39-60
21	M16 LOCKNUT	1	Z23-16
22	FILM PULL DOWN BRACKET ASSEMBLY	1	WD65-FPDB
23	1/4" X 2" SPLIT PIN	2	Z01-23-29
24	PLASTIC CAP	2	Z32-07
25	HYDRAULIC RAM (PULL DOWN)	1	Z01-01-AW25
26	1" G.B. PLASTIC CAP	2	Z32-14
27	M12 X 50 HEX SET	1	Z26-086S
28	M12 LOCKNUT	1	Z23-12
29	3/4" FLAT WASHER	1	Z10-02-19
30	FILM PULL DOWN ARM ASSEMBLY	1	WD65-FPDA
31	RETAINING WASHER	1	WD60-859
32	ROLLER	1	WD60-866
33	FILM GUARD	1	WD67-FG
34	M6 GREASE NIPPLE	1	Z39-66
35	ADJUSTER HANDLE	1	Z35-55

TANCO AUTOWRAP 550A/1060A MODEL
VALVE JUNCTION BOX FILTER & DIVERTER VALVE MOUNTING
BRACKET ASSEMBLY



ITEM NO:	DESCRIPTION:	QTY:	PART NO:
1	VALVE COVER PLATE ASSY	1	WD67-VCP
2	JUNCTION BOX MOUNTING PLATE	1	WD66-041
3	4 BANK SOLENOID VALVE	1	Z01-03-A550
4	FLOW DIVIDER	1	Z01-03-10-A6
5	SPACER	3	WD67-1 00
6	8MM DIA MUD FLAP WASHER	2	Z11-02-081
7	M6 LOCKNUT (NYLOCK)	2	Z32-06
8	OIL FILTER	1	Z01-24-08
8A	OIL FILTER ELEMENT	1	Z01-24-08E
9	M8 HEX HD SET X 25MM	2	Z26-040S
10	8MM DIA SPRING WASHER	2	Z12-02-08
11	M8 LOCKNUTS	5	Z23-08
12	M6 ALLEN HD SOCKET SCREW X 45MM	2	Z13-020-50
13	OVER-CENTRE VALVE	1	Z01-03-10-A8
14	JUNCTION BOX	1	ZDG-0550A
15	8MM DIA FLAT WASHER	4	Z10-02-08
16	M4 ALLEN HD SOCKET SCREW X 16MM	4	Z26-006
17	M4 LOCKNUT	4	Z23-04
18	M8 X 20 HEX SET	2	Z26-039S
19	M10 X 20 HEX SET	3	Z26-060S
20	10MM SPRING WASHER	3	Z12-02-10
21	M10 HEX NUT	2	Z18-10
22	M8 X 100 HEX SET	3	Z26-057S

TANCO AUTOWRAP 350S / 550S / 550A / 1060S / 1060A MODELS
LIFT ARM AND CHASSIS



PARTS LIST

ITEM NO	DESCRIPTION	QTY	PART NO.
1	CHASSIS ASSEMBLY	1	WD67-CHA
2	LIFT ARM ASSEMBLY	1	WD60-LA
3	ADJUSTABLE OUTER ARM ASSEMBLY	1	WD60-LAAA
4	ADJUSTABLE BALE STOP	1	WD610-LAS
5	HYDRAULIC RAM (LIFT ARM)	1	Z01-01-AW
6	RAM BOTTOM PIVOT PIN	1	Z03-02-330
7	RAM TOP PIVOT PIN	1	Z03-01-905A
8	2" X 1/4" SPLIT PINS	3	Z03-21-29
9	LIFT ARM PIVOT C/W GREASE NIPPLE	2	Z03-01-905
10	M10 HEX HD SET X 25MM LONG (TUFLOCK)	3	Z26-061S
11	10MM DIA MACHINED FLAT WASHER	3	Z11-02-10
12	10MM DIA SPRING WASHERD	3	Z12-02-10
13	SPAREX PIN	1	Z03-04-73
14	SPAREX PIN	1	Z03-04-77
15	7/16" DIA LINCH PINS	2	Z03-22-06
16	SAFETY SUPPORT BAR	1	WD60-319
17	6MM DIA LINCH PIN	2	Z03-22-03
18	PLASTIC CAP	1	Z32-10
* 19	LIFT ARM SENSOR MOUNTING BRACKET	1	WD610-LSM

* ON 'A' MODELS ONLY

200

200

TANCO AUTOWRAP
HYDRAULIC BALE RAMP

PARTS LIST

ITEM	DESCRIPTION:	QTY:	PART NO:
1	HYDRAULIC BALE RAMP ASSY	1	WD65-HBRF
2	RAMP MAIN PIVOT PIN C/W GREASE NIPPLE	2	Z03-01-905
3	M10 HEX HD SET X 20mm LONG TUFLOCK	2	Z26-060ST
4	10mm DIA MACHINED FLAT WASHER	2	Z11-02-10
5	10mm DIA SPRING WASHER	1,2	Z12-02-10
6	BALE MAT	1	Z05-02-BRH
7	M10 X 30mm LONG CUP HD.SQ BOLTS	5	Z13-112
8	M10 HEX NUTS	5	Z18-10
9	HYDRAULIC RAM C/W ACCUMULATOR	1	Z01-01-AWD
10	SPAREX PIN	1	Z03-04-74
11	SPAREX PIN	1	Z03-04-73
12	7/16" DIA LINCH PIN	2	Z03-22-06
13	ACCUMULATOR MOUNTING PLATE	1	WD65-AMP
14	CLAMPING PLATE	1	WD65-231
15	M8 HEX HD BOLT X 80mm LONG	4	Z26-050B
16	M8 LOCKNUT	4	Z23-08
17	M28 X 1.5 PITCH HEX NUT	1	Z18-28

FAULT FINDING

PROBLEMS.	REMEDY.
1. Drive Roller and Bale belt not driving	Check and replace shear Fins in sprocket on drive roller.
2. Film Breaking	Wash off dispenser and slave rollers. Change roll of film. Use recommended films only.
3. Film not wrapping evenly on bale.	Adjust film mast so centre of film roll is aligned with centre of bale .
4. Film Tearing on Ramp.	Check for sharp edges and remove.
5. Bale Skidding on Ramp.	Fit Hessian Bag or piece of carpet to Ramp.
6. Film Dispenser not Pre-Stretching Film.	Check that both Rollers turn when one is turned by hand. If not, fit new gears or replace unit.
7. Tyres coming off 4" platform Support Wheels.	Replace Wheels - Reduce speed below 30 r.p.m. - Do not grease path of wheels on platform. Check that bale does not get trapped between arms and turntable when being loaded. If this happens lower arm and start again.
8. Hydraulic Bale Ramp not returning to raised position after tipping off bale.	See instructions for recharging hydraulic cylinder.
9. Bale Belt Tracking Adjustment	
(i) Ensure vertical rollers (plastic) are in tight on the bale. Remember that the bale will reduce in size during wrapping and, on the round bales in particular, the corners will become rounded so that the bale will tend to move sideways due to centrifugal forces. Now, if the plastic rollers are too far apart, the bale will move against one of the plastic rollers causing the belt to move in the opposite direction. Always adjust the vertical plastic rollers so that they keep the bale central on the belt.	
(ii) Adjust bale stop on lift arm so that bale is loaded centrally onto platform.	
(iii) Check that bale belt is fitted so arrow points in direction of travel.	
(iv) Check that both 8" rollers underneath the bale belt are parallel to each other. Remember the golden rule - a belt will always move up a slope: So, if the belt continually moves to our side, adjust idler roller to a narrower setting on the opposite side to which the belt travels.	
(v) Check that gripface strips are securely fixed to the roller and have not moved out of alignment.	
(vi) Check that is the same measurement each side by running a string around the belt and measuring it. If one side is longer than the other replace the belt.	

**TANCO AUTOWRAP
HYDRAULIC CUT AND START UNIT
PARTS LIST**

WD67PL80

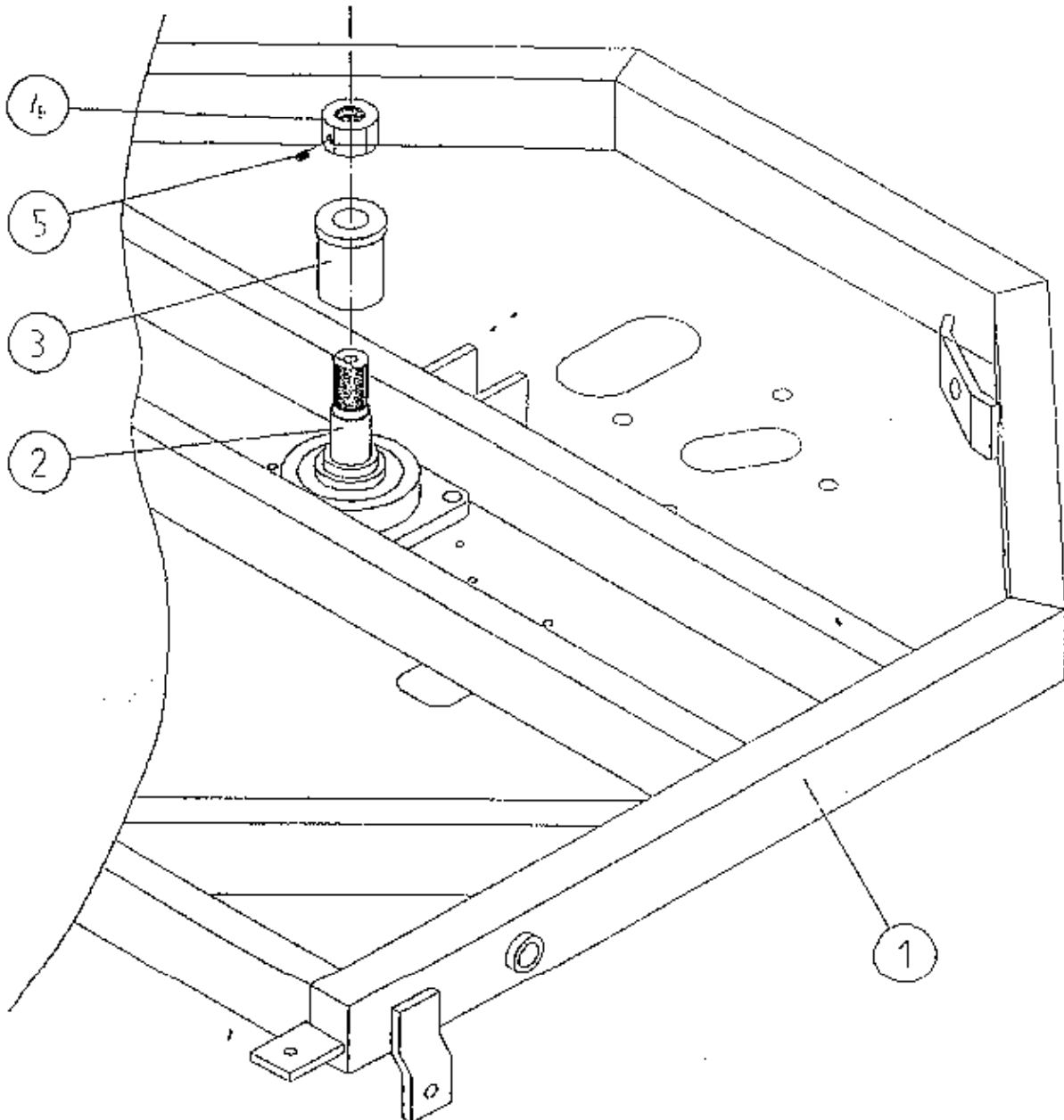
ITEM NO.	DESCRIPTION	QTY	PART NO.
1	HYDRAULIC CUT AND START MAIN FRAME	1	WD605H-MF
2	H10420 CSK SCREW	1	Z13-139
3	3" DOMED CAP	1	WD605H-14
4	GRIPPER ROD	1	WD605H-13
5	H6 X 25 HEX SET	1	Z26-0405
6	BLADE	1	WD605-104
7	SPRING	1	Z07-49
8	GRIPPER PAD (RUBBER)	1	Z40-28
9	GRIPPER PAD	1	WD605H-15
10	M8 X 10 GRUB SCREW	1	Z28-008
11	M14 HEX NUT	3	Z18-14
12	14MM SPRING WASHER	2	Z12-02-14
13	CUT & START HYDRAULIC RAM ACCUMULATOR	1	Z01-01-AWH
14	8MM FLAT WASHER	2	Z11-02-08
15	M8 LOCK NUT	2	Z23-08
16	M10 LOCK NUT	4	Z23-010
17	M10 X 75 HEX BOLT	4	Z26-069B

TANCO AUTOWRAP

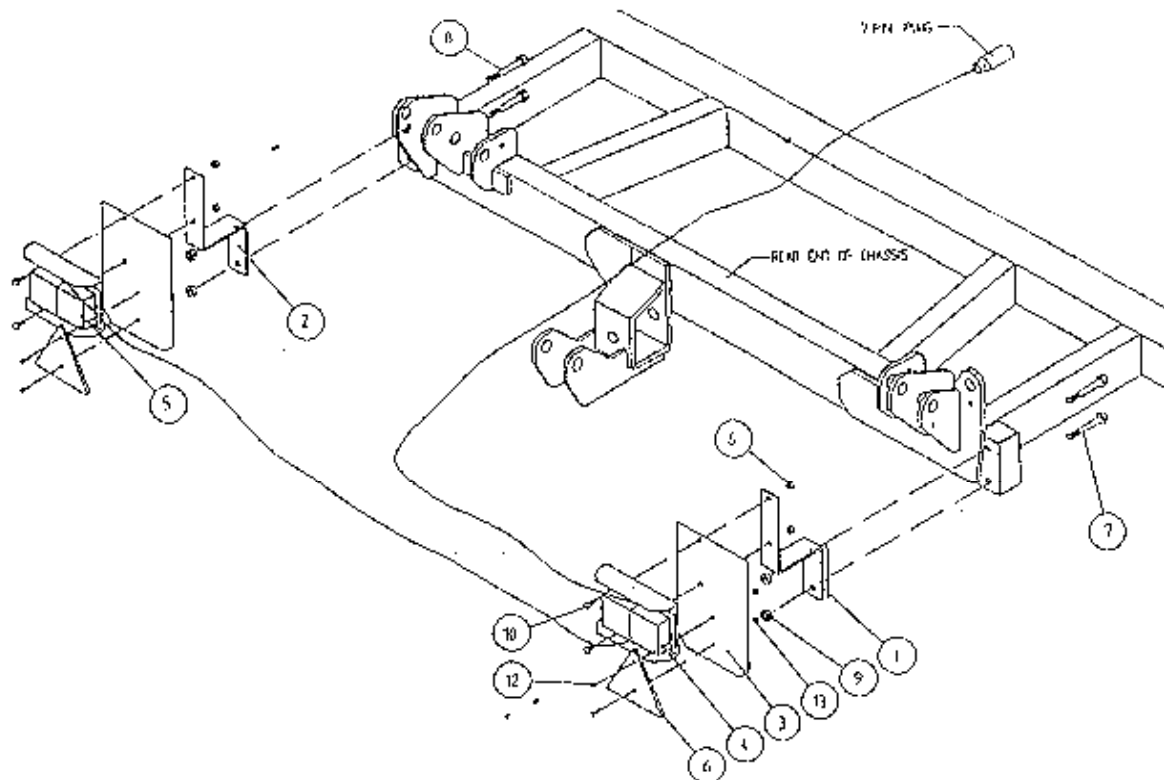
TURNTABLE LOCKING ARRANGEMENT

PARTS LIST

ITEM	DESCRIPTION	QTY	PART NO
1	UNDERSIDE OF TIPPING FRAME	2	WD64-TF
2	TURNTABLE CENTRE SHAFT	1	WD64-002
3	SPINDLE SPACER	1	WD67-SS
4	1 1/4" UNC HEX NUT	2	Z18-300
5	M8 GRUB SCREW X 6MM LONG	1	Z28-007



TANCO AUTOWRAP TRAILED MODELS
LIGHTING KIT

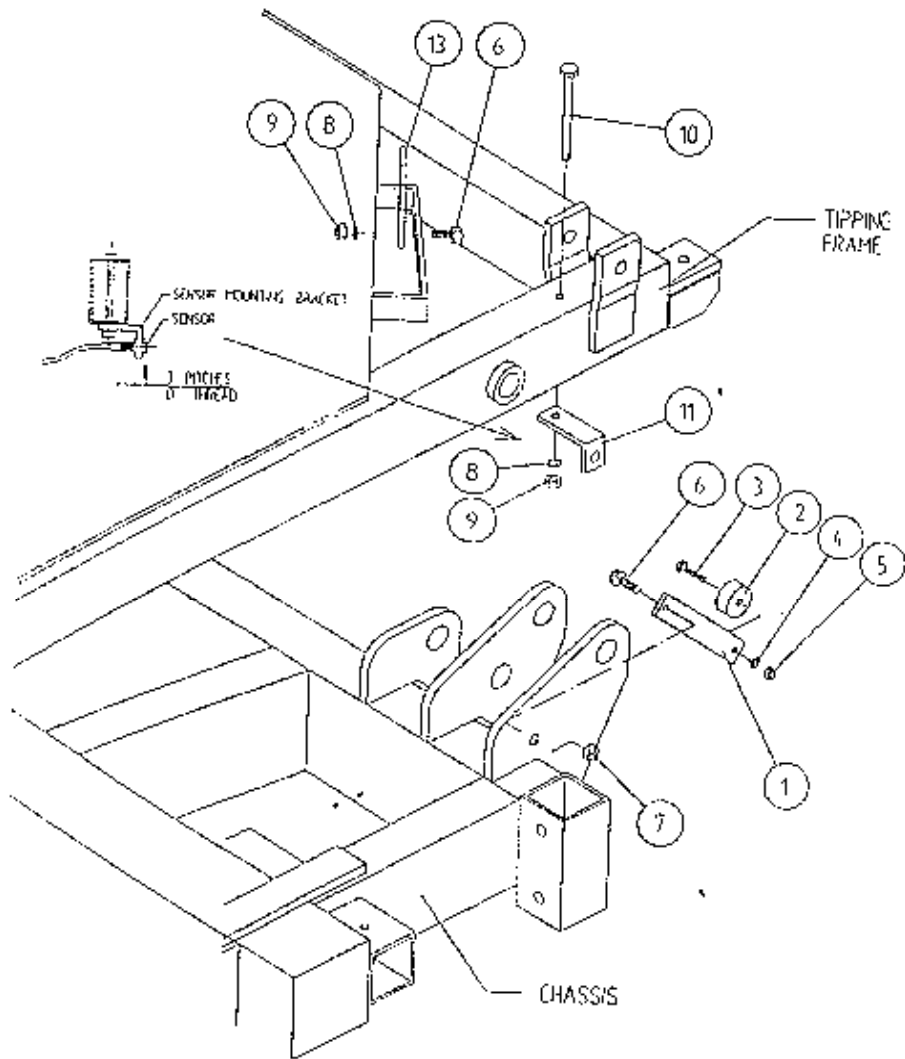


ITEM NO	DESCRIPTION	QTY	PART-NO.
1.	LIGHT MOUNTING BRACKET RHS	1	WD60-LMB
2.	LIGHT MOUNTING BRACKET LHS	1	WD60-899
3.	LIGHT MOUNTING PLATE	2	WD60-898
4.	LIGHT CLUSTER RHS	1	Z05-30R
5.	LIGHT CLUSTER LHS	1	Z05-30L
6.	TRIANGULAR REFLECTOR	2	Z04-62
7.	M12 HEX HD BOLT X 100 LONG	2	Z26-092B
8.	M12 HEX HD BOLT X 90 LONG	2	Z06-091B
9.	M12 LOCKNUT	4	Z23-12
10.	M8 HEX HD SET X 20 LONG	4	Z26-39S
11.	M8 LOCKNUT	4	Z23-08
12.	M6 CHEESE HEAD SET X 20 LONG	4	Z13-15
13.	M6 LOCKNUT	4	Z23-06

NOTES

Lined writing area with horizontal lines for text entry.

TANCO AUTOWRAP CUT AND START UNIT
SENSOR AND MAGNET MOUNTING BRACKETS



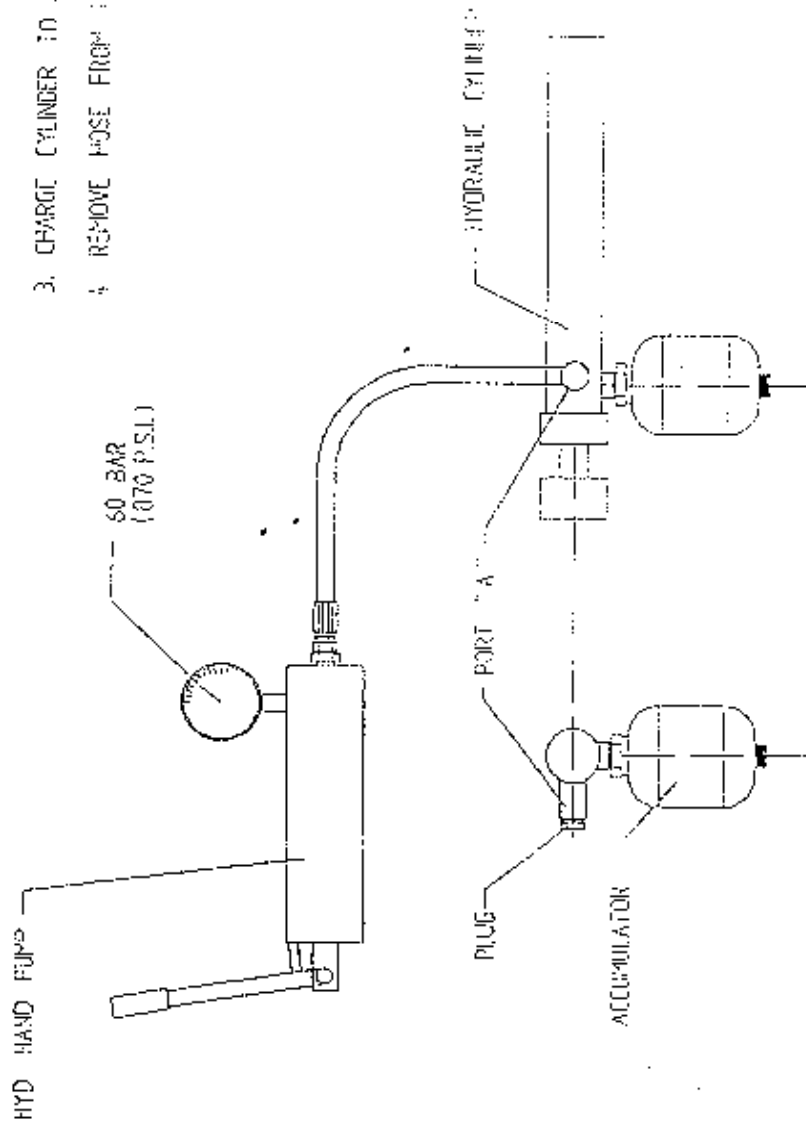
PARTS LIST

ITEM NO.	DESCRIPTION	QTY.	PART-NO.
1.	MAGNET MOUNTING BRACKET	1	WD605-165
2.	MAGNET	1	D6043
3.	M6 HEX HD SET x 30mm LONG	1	Z26-022S
4.	6mm DIA FLAT WASHER	1	Z11-02-06
5.	M6 LOCKNUT	1	Z23-06
6.	M8 HEX HD SET x 25mm LONG	1	Z26-040S
7.	M8 LOCKNUT (NYLOCK)	2	Z23-08
8.	8mm DIA SPRING WASHER	1	Z12-02-08
9.	M8 HEX NUT	2	Z18-08
10.	M8 HEX HD SET x 100mm LONG	1	Z26-057S
11.	SENSOR MOUNTING BRACKET	1	WD605-58
12.	SENSOR MOUNTING FLAT	1	WD605-164

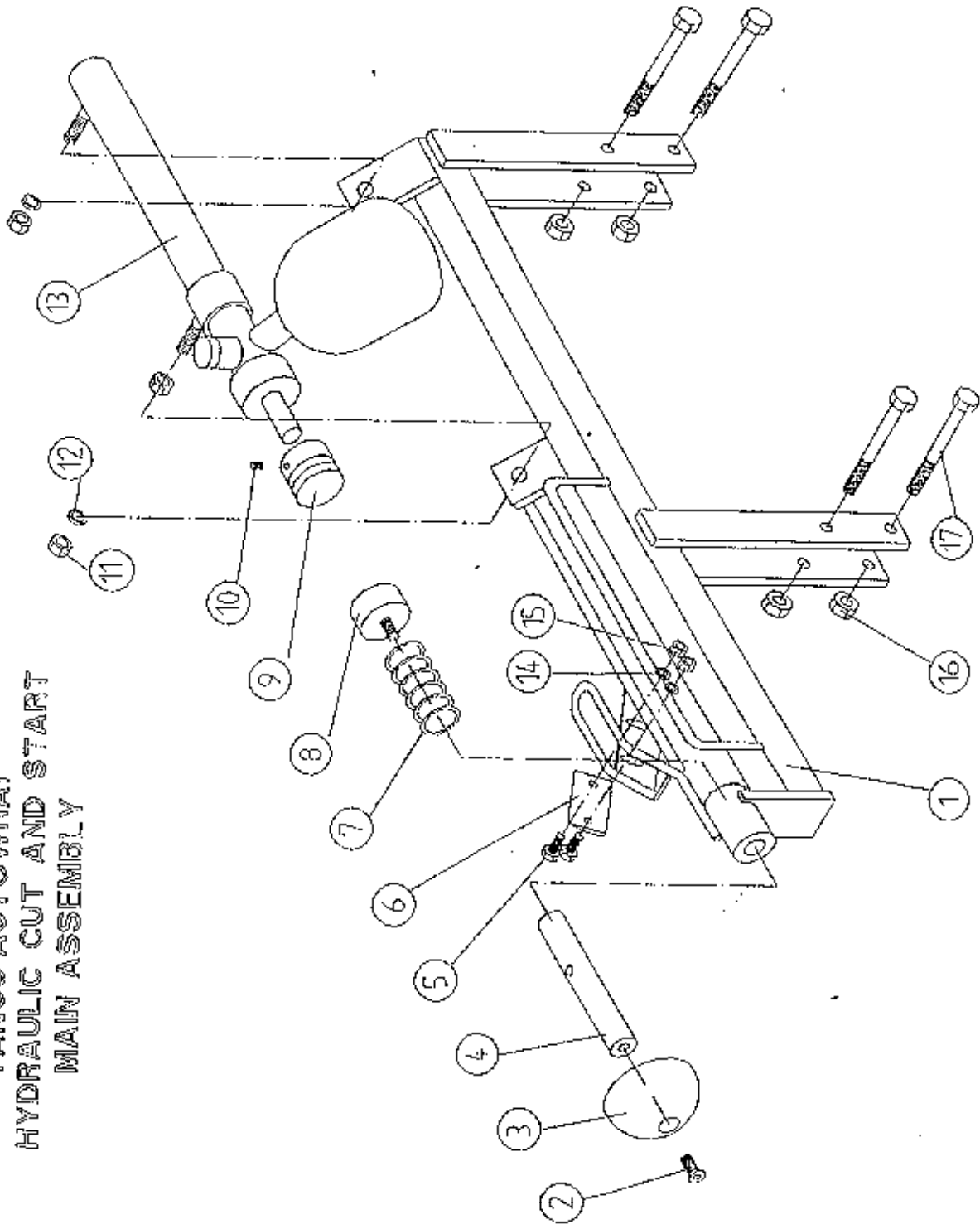
TANCO AUTOWRAP - HYDRAULIC CUT AND START

INSTRUCTIONS FOR RECHARGING HYDRAULIC CYLINDER

1. REMOVE PLUG FROM PORT "A"
2. CONNECT HOSE FROM HYD HAND PUMP TO PORT "A"
3. CHARGE CYLINDER TO A PRESSURE OF 50 BAR (870 P.S.I.)
4. REMOVE HOSE FROM PORT "A" AND REFIT PLUG



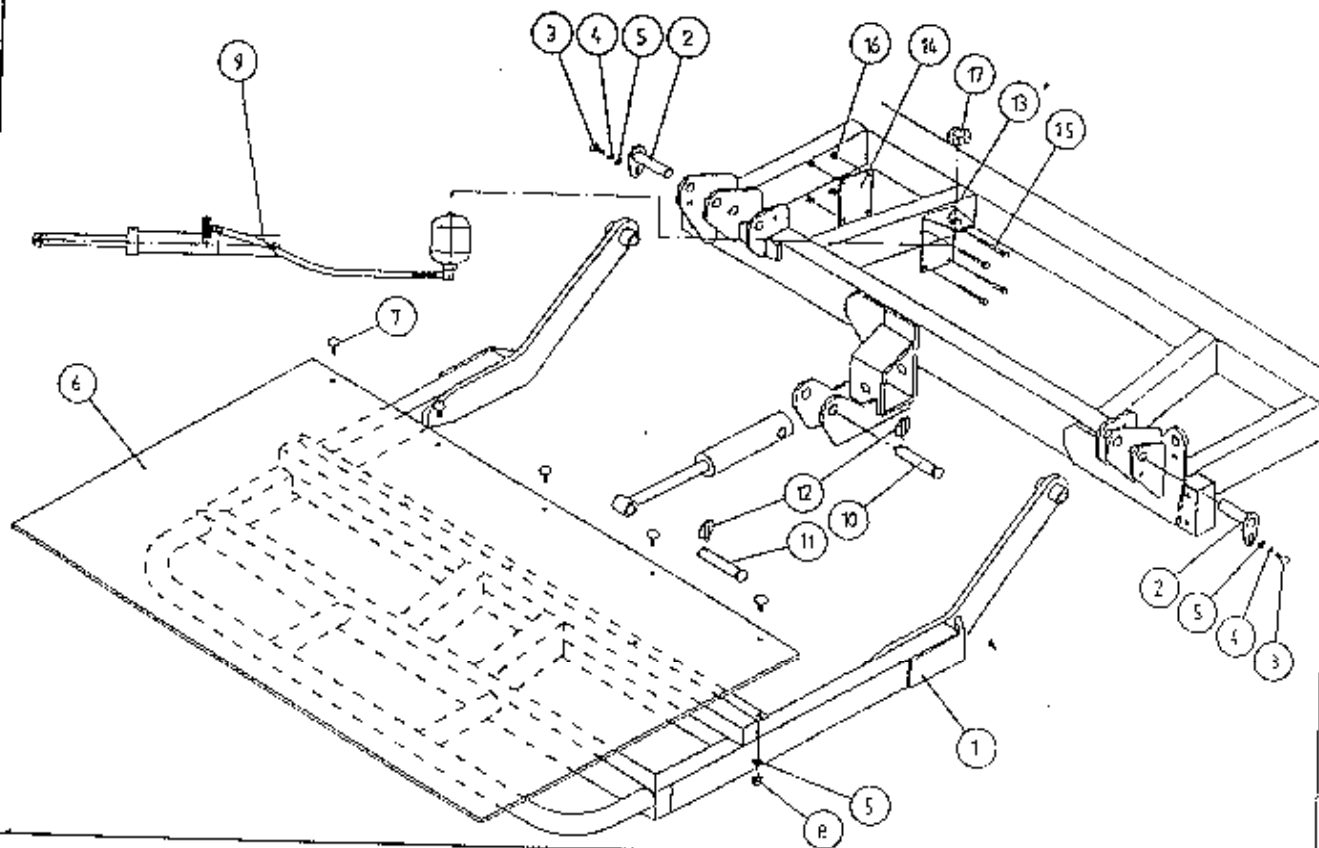
TANCO AUTOWRAP
HYDRAULIC CUT AND START
MAIN ASSEMBLY



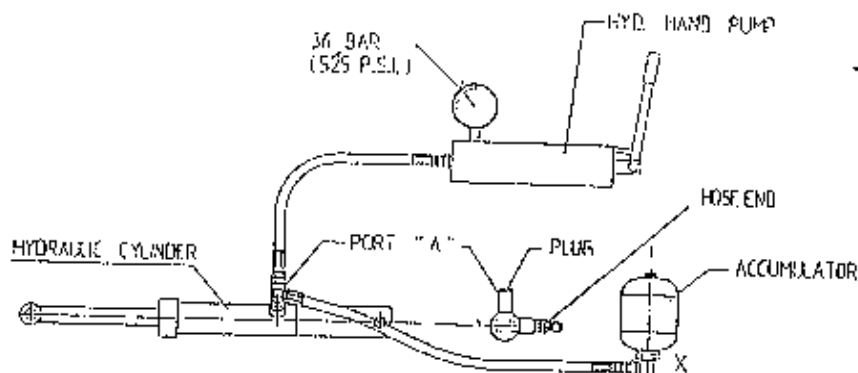
000

000

TANCO AUTOWAP HYDRAULIC BALE RAMP



INSTRUCTIONS FOR RECHARGING AND REDUCING PRESSURE IN HYDRAULIC BALE RAMP CYLINDER



TO RECHARGE CYLINDER:

1. REMOVE PLUG FROM PORT "A".
2. CONNECT HOSE FROM HYD. HAND PUMP TO PORT "A".
3. CHARGE CYLINDER TO A PRESSURE OF 36 BAR (525 P.S.I.)
4. BLEED AIR FROM SYSTEM BY SLACKENING HOSE CONNECTION AT BASE OF ACCUMULATOR MARKED X. RETIGHTEN CONNECTION.
5. REMOVE PUMP HOSE FROM PORT "A" AND REFIT PLUG.

TO REDUCE PRESSURE IN CYLINDER:

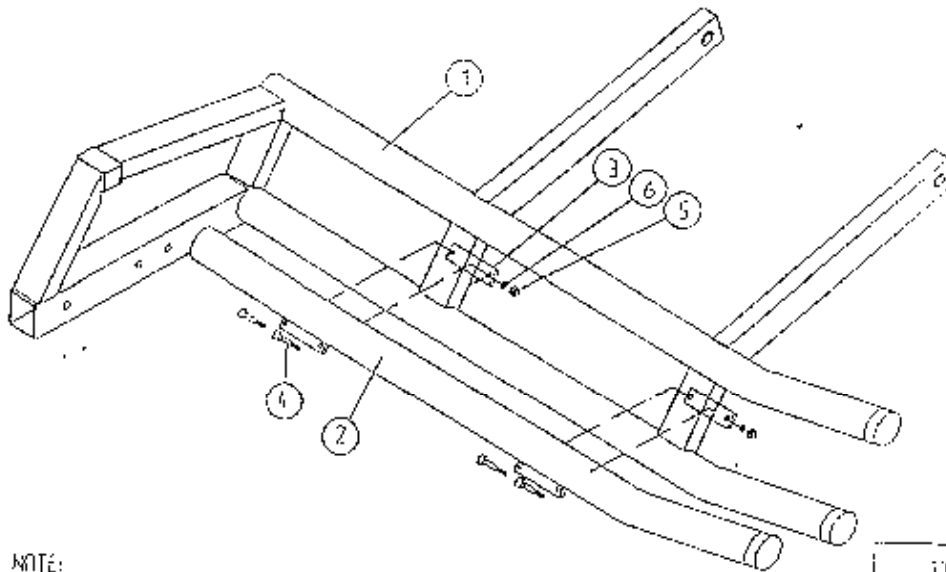
1. SLACKEN CONNECTION ON HOSE END JUST ENOUGH TO ALLOW OIL TO BLEED OUT SLOWLY.
2. RETIGHTEN CONNECTION AND CHECK OPERATION OF BALE RAMP AS DETAILED IN FIG. 1.
3. REPEAT PROCEDURE UNTIL OPERATION OF RAMP IS CORRECT.

FILE NAME W066-PE2E

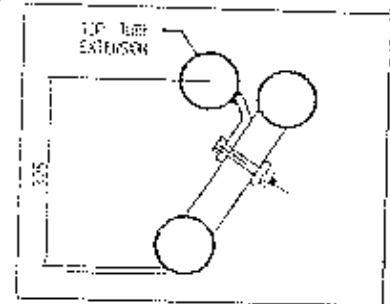
WD610-LA2

TANCO AUTOWRAP 1060S/1060A MODEL

TOP TUBE EXTENSION

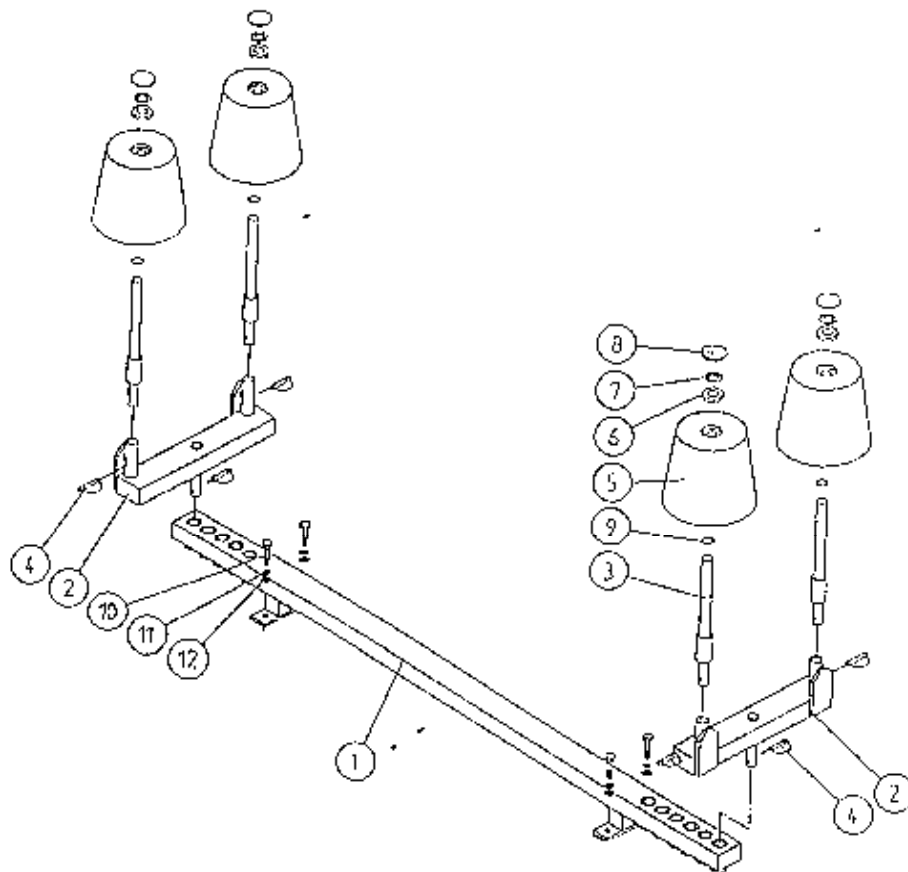


NOTE:
TOP TUBE EXTENSION IS NOT REQUIRED
WHEN LIFTING FORD N.R. D1000 BALE.
HOWEVER IT SHOULD BE FITTED WHEN
LIFTING SQUARE BALE.



PARTS LIST

ITEM NO	DESCRIPTION	QTY.	PART-NO.
1	LIFT ARM ASSEMBLY	1	WD610-LA
2	TOP TUBE EXTENSION	1	WD610-TTE
3	CLAMPING PLATE	2	WD610-76
4	M12 HEX HD BOLT x 90mm LONG	4	Z26-091B
5	M12 HEX NUT	4	Z18-12
6	12mm DIA SPRING WASHER	4	Z12-02-12

TANCO AUTOWRAP 1060 MODELSEND ROLLER MOUNTING BRACKET ASSYPARTS LIST

ITEM NO	DESCRIPTION	QTY	PART-NO.
1.	CROSS BEAM ASSY	1	WD610-CBA
2.	END ROLLER MOUNTING BRACKET	2	WD610-RMB
3.	END ROLLER SHAFT ASSY	2	WD610-RSA
4.	10mm DIA "D" LINCH PIN	4	Z38-03
5.	SIDE ROLLER	6	Z06-AWR
6.	BEARING 25mm I.D.	4	Z06-AWRB-93
7.	THRUST WASHER	4	WD60-292
8.	PLASTIC CAP	4	Z06-AWRC
9.	CIRCLIP	4	Z28-525
10.	M1.2 HEX HD SET x 30mm LONG	4	Z26-082S
11.	12mm DIA SPRING WASHER	4	Z12-02-12
12.	12mm DIA FLAT WASHER	4	Z11-02-10

U

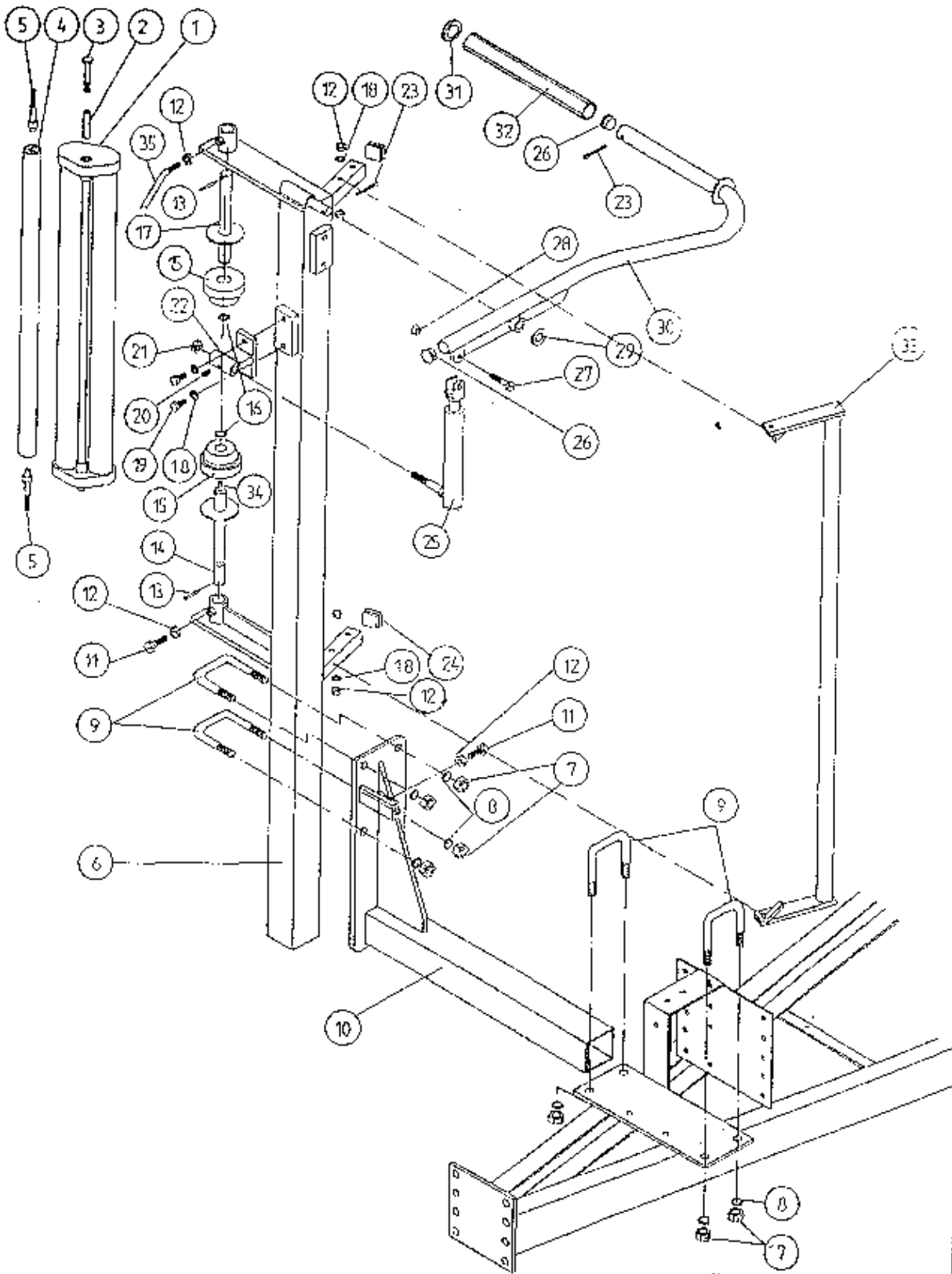
U

U

U

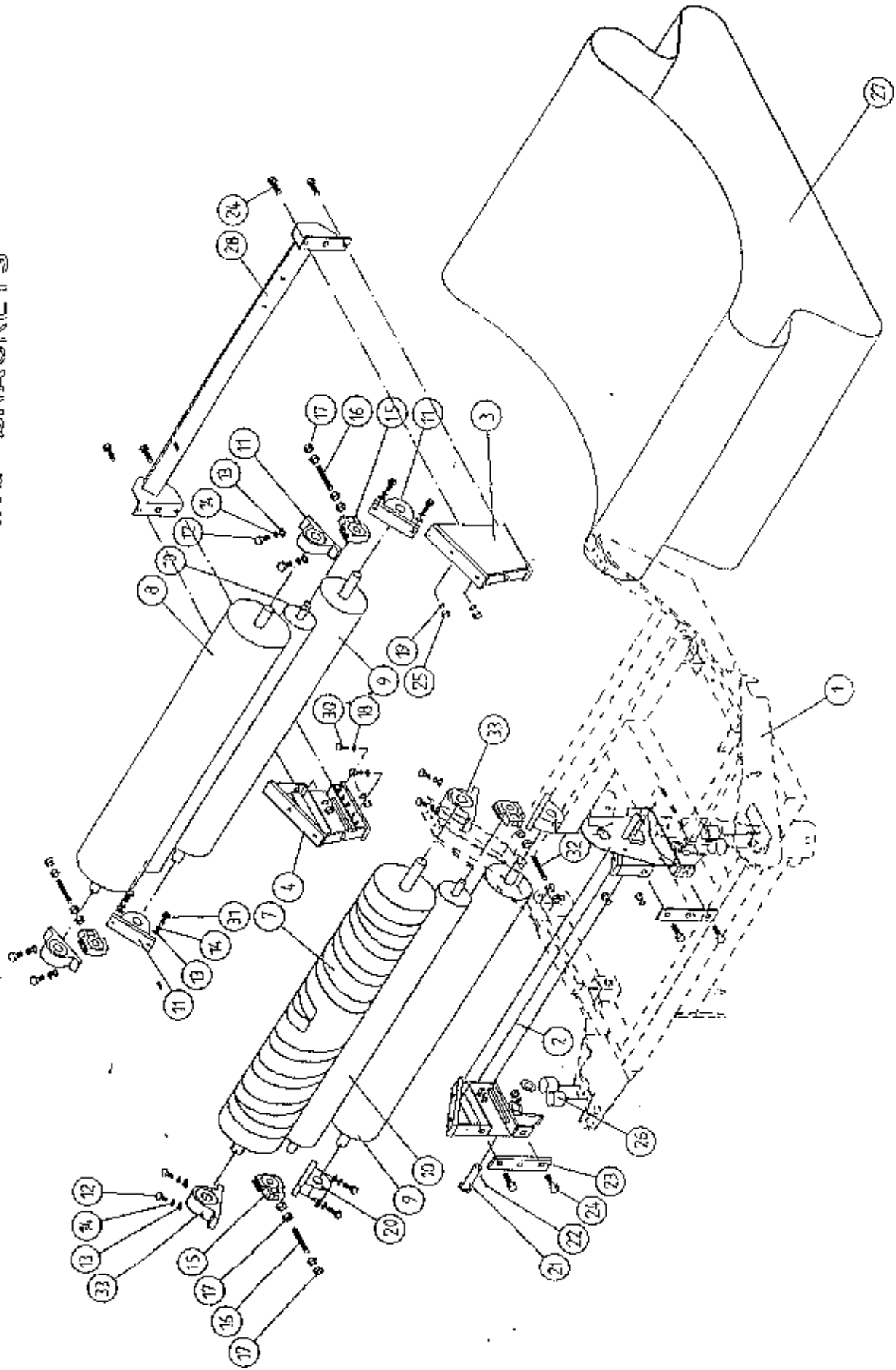
U

TANCO AUTOWRAP TRAILED MODELS FILM DISPENSER SYSTEM

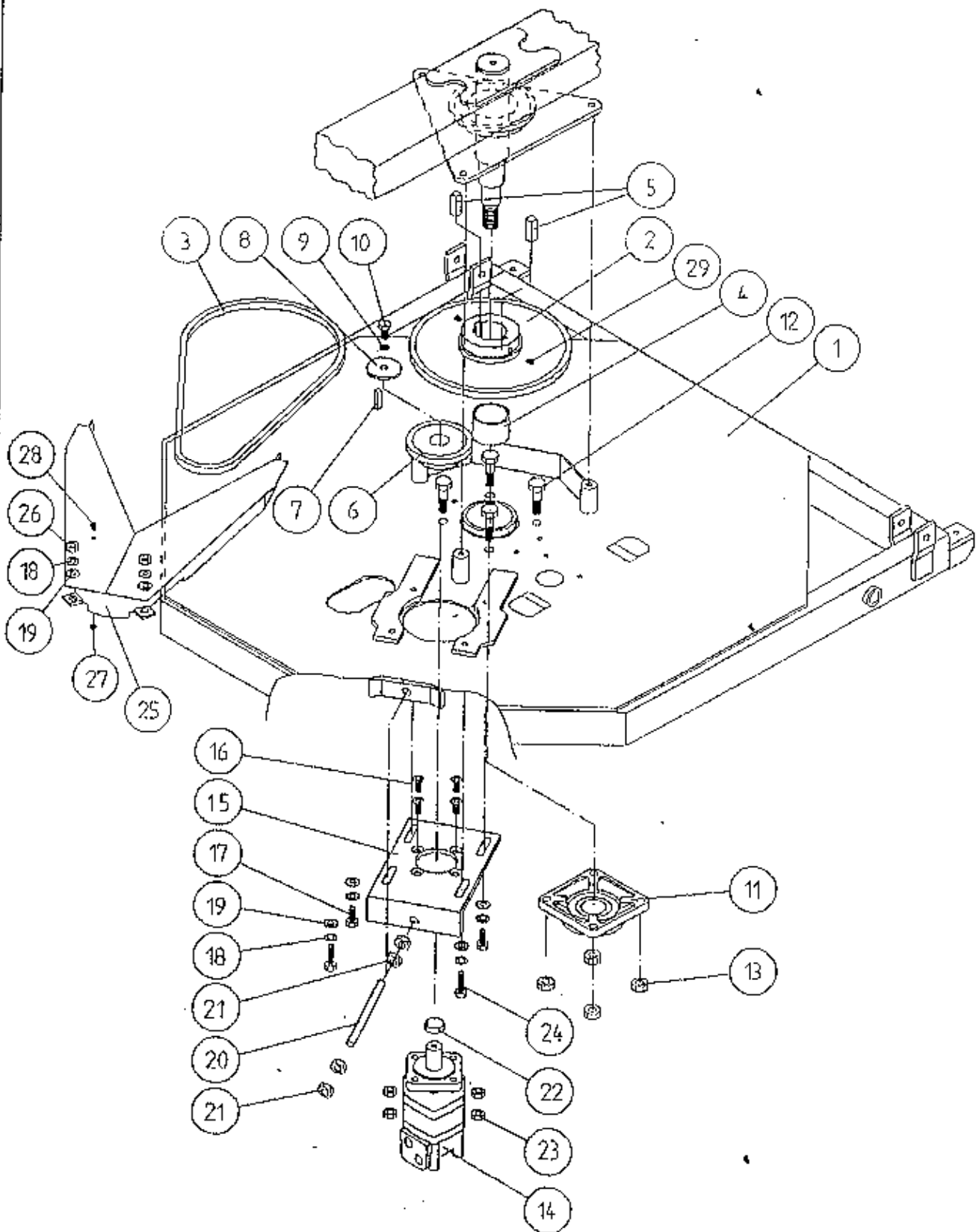


FILE NAME WD67 PL27

TANCO AUTOWRAP 1060 MODELS
BALE BELT ROLLER MOUNTING BRACKETS

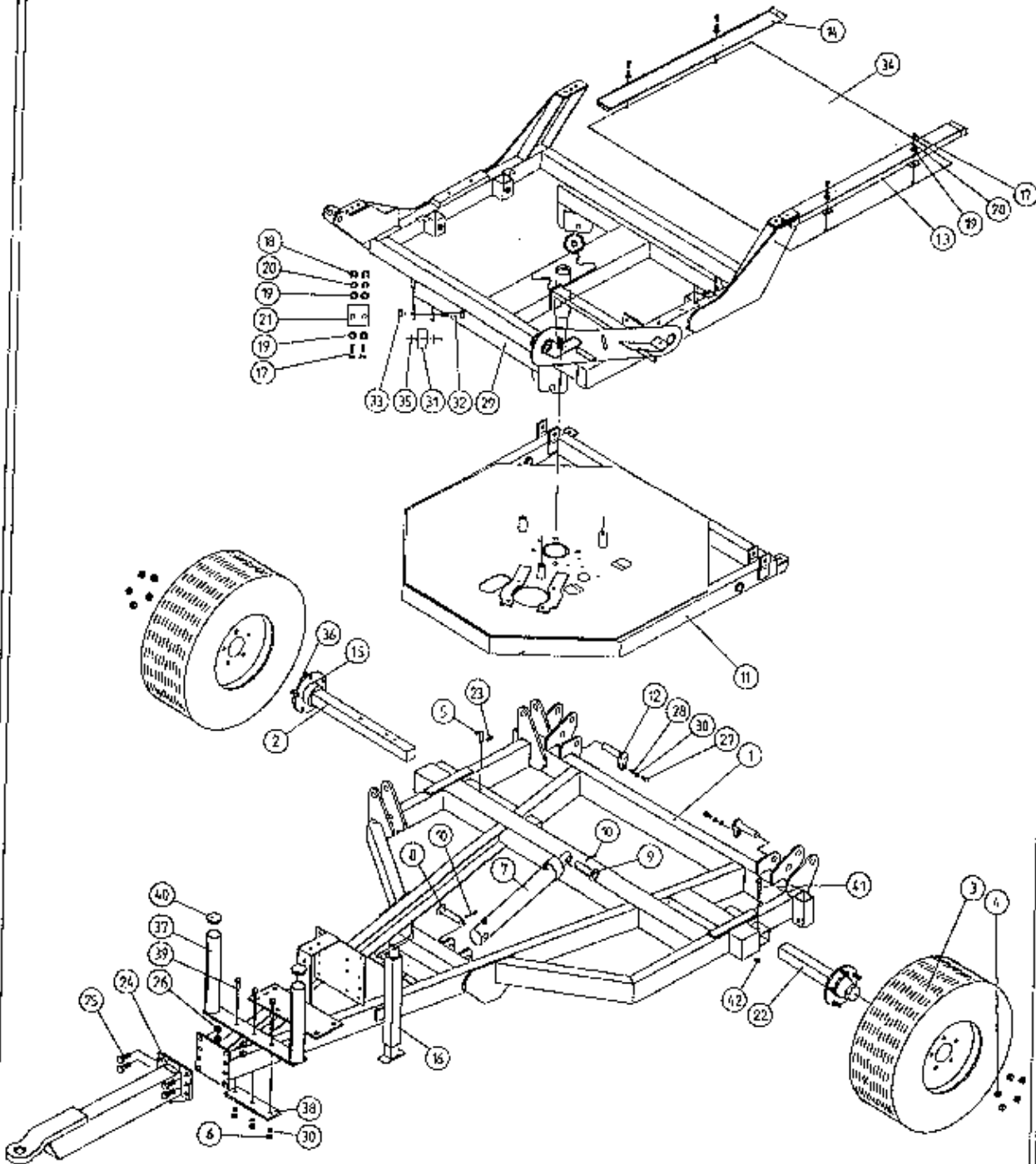


TANCO AUTOWRAP TURNTABLE CHAIN DRIVE ASSEMBLY



FILE NAME: WD66 PL9

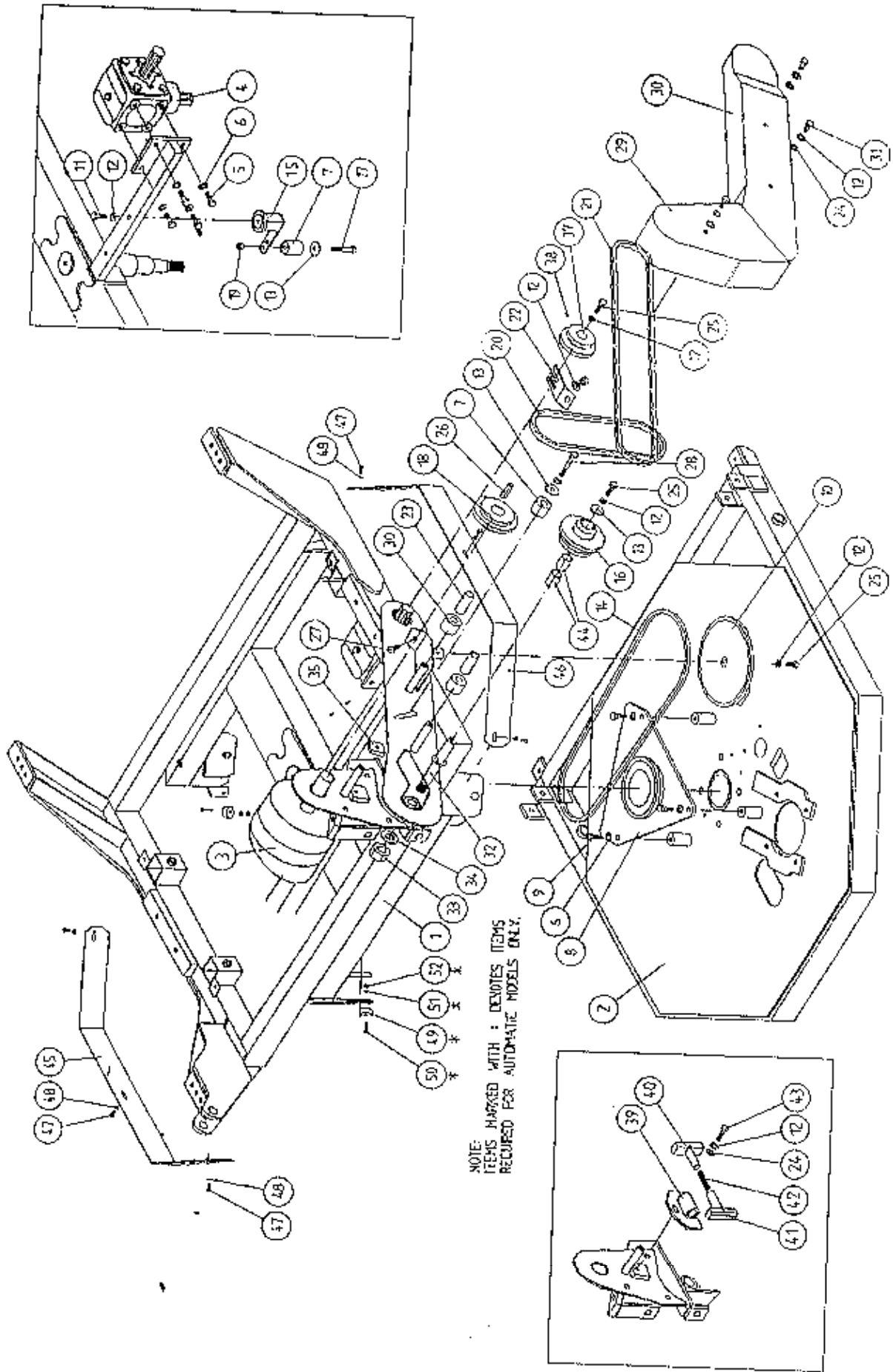
TANCO AUTOWRAP 1060 MODELS MAIN ASSEMBLY



FILE NAME: WD67-PI.75

TANCO AUTOWRAP 1060 MODEL

CONSTANT INDEXING DRIVE ASSY



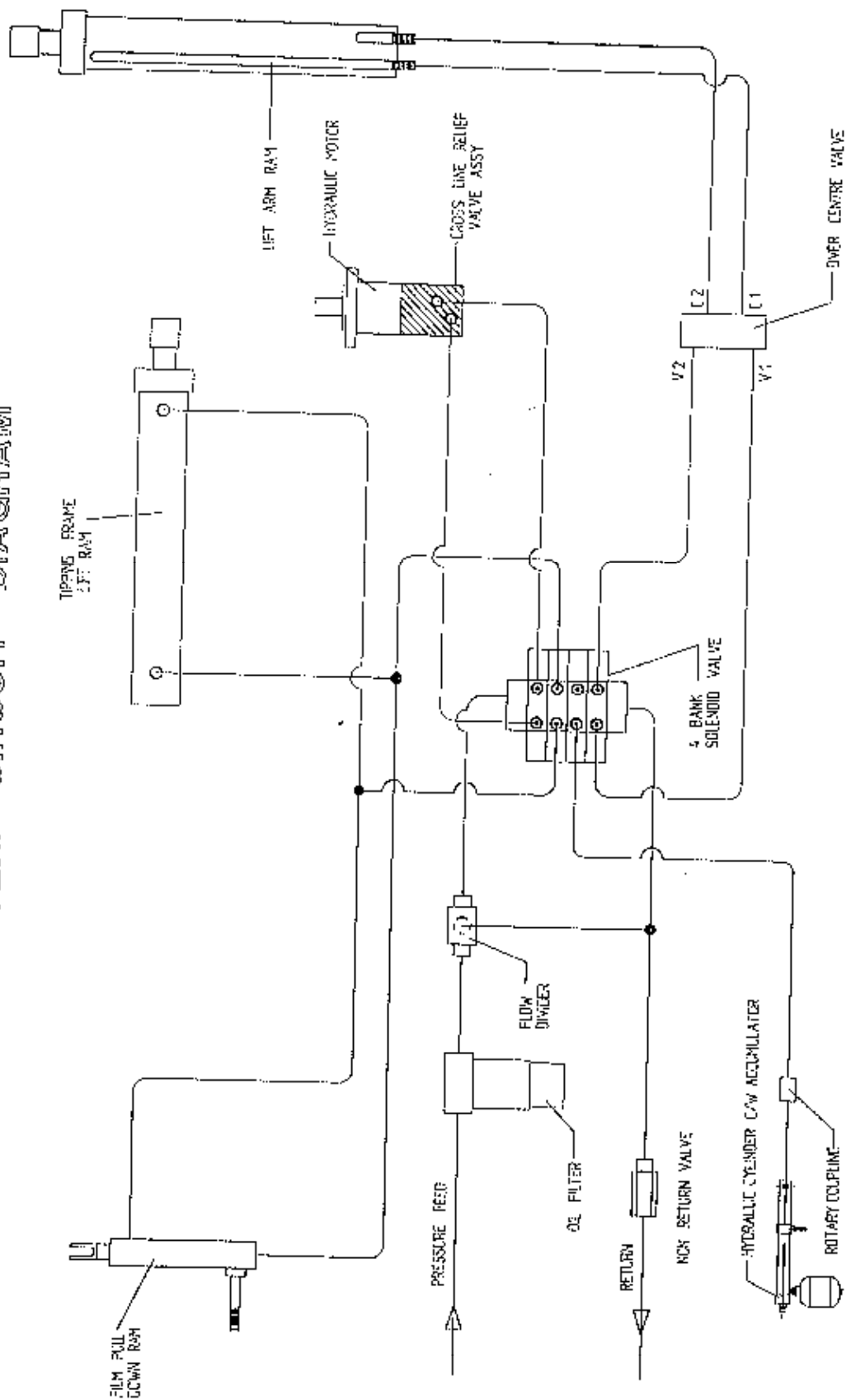
33

33

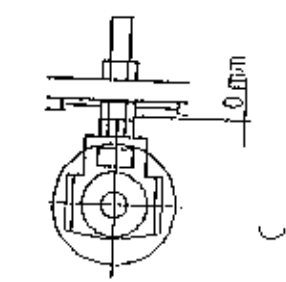
3
3
3

3
3

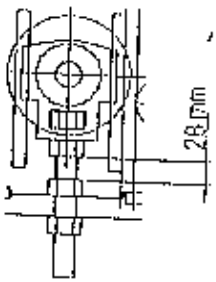
TANCO AUTOWRAP 550 A / 1080 A MODEL HYDRAULIC CIRCUIT DIAGRAM



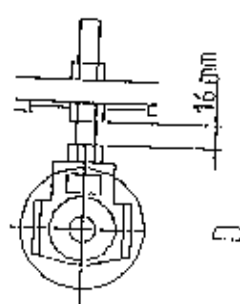
FILE NAME W067-H26



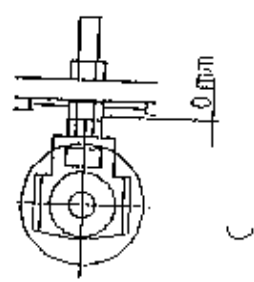
A



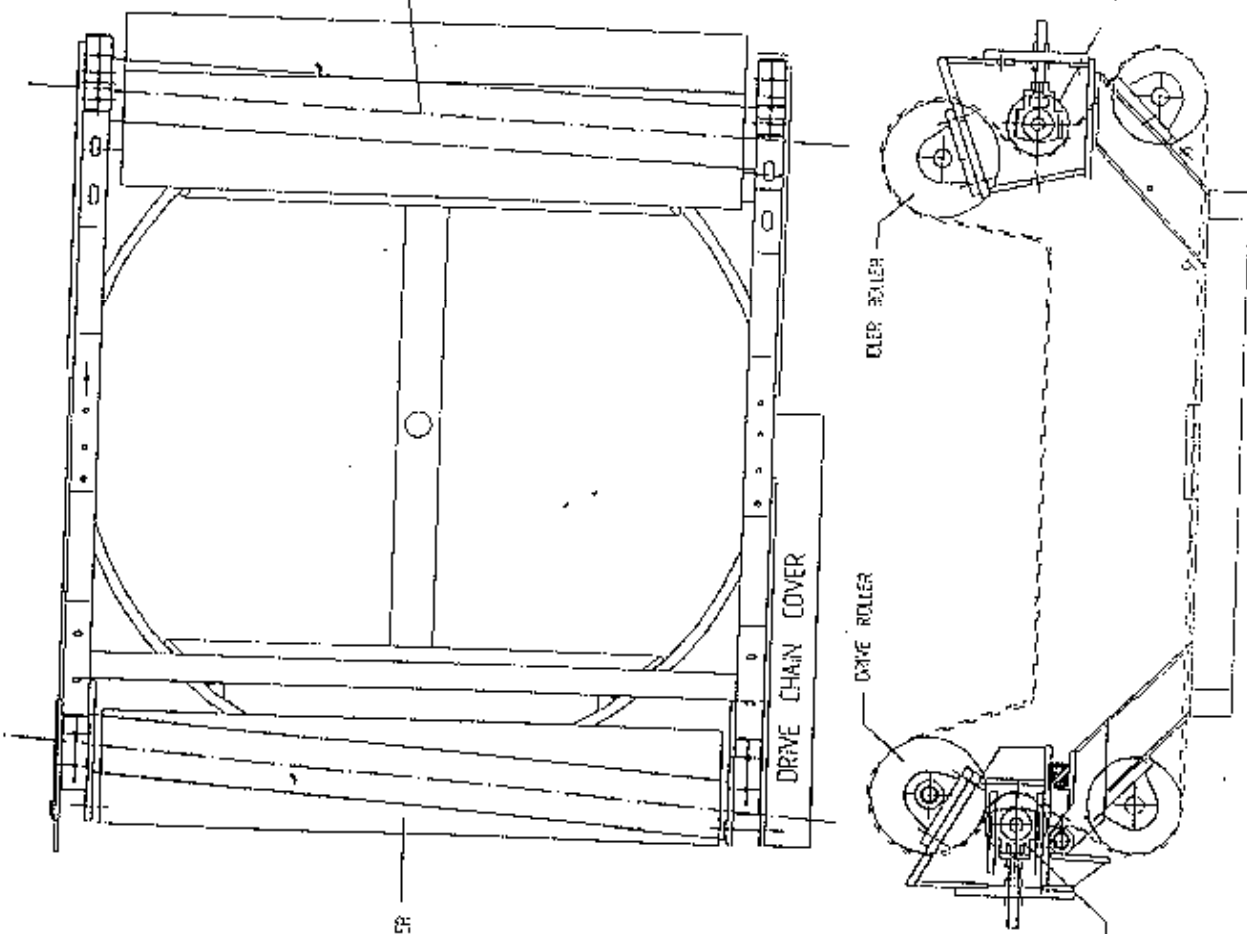
B



C



D



CA. OF TRACKING ROLLER

DRIVE ROLLER

DRIVE CHAIN COVER

DRIVE ROLLER

DRIVE ROLLER

BOLT TRACKING ROLLER

2

BELT ADJUSTER ROLLER

1

1030 MODEL.

B.T.1

FILE NAME 9226A

TANCO AUTOWRAP TURNTABLE CHAIN DRIVE TENSIONING SYSTEM

TENSIONING PROCEDURE

1. TIP UP MACHINE AND SUPPORT WITH A PROP.
 2. REMOVE CHAIN GUARD.
 3. SLACKEN M12 CLAMPING BOLTS SLIGHTLY.
 4. SLACKEN LOCKNUT A.
 5. ADJUST NUT B UNTIL THERE IS 8mm - 10mm DEFLECTION ON CHAIN.
-
- NOTE WARNING:
DO NOT OVER TENSION CHAIN AS MOTOR WILL BE DAMAGED
-
6. TIGHTEN LOCKNUT A.
 7. TIGHTEN M12 CLAMPING BOLTS.
 8. REFIT CHAIN GUARD.

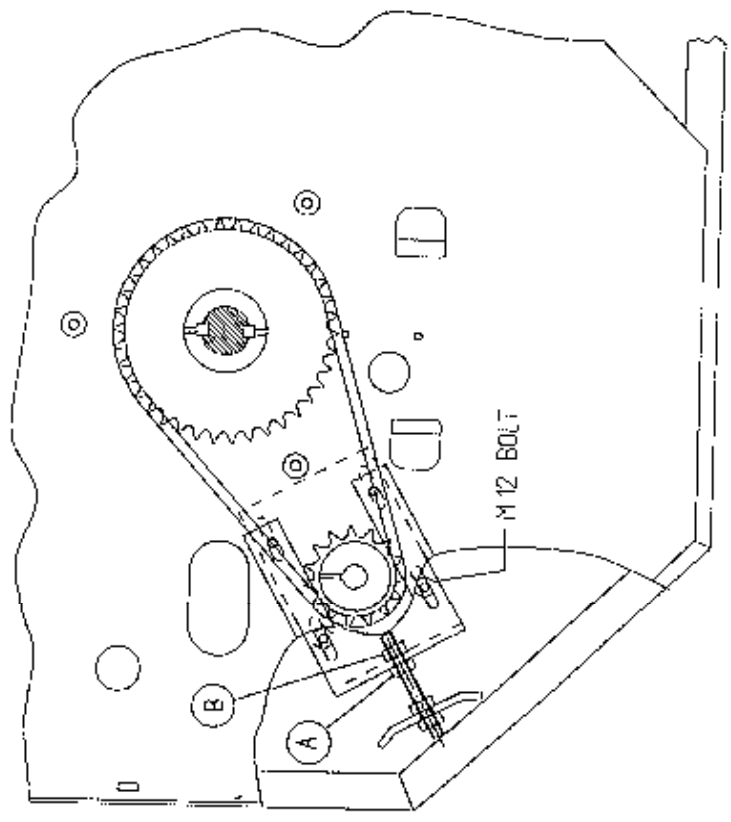


Fig. 8

C C C

0 3

3 2

0

3

30

0