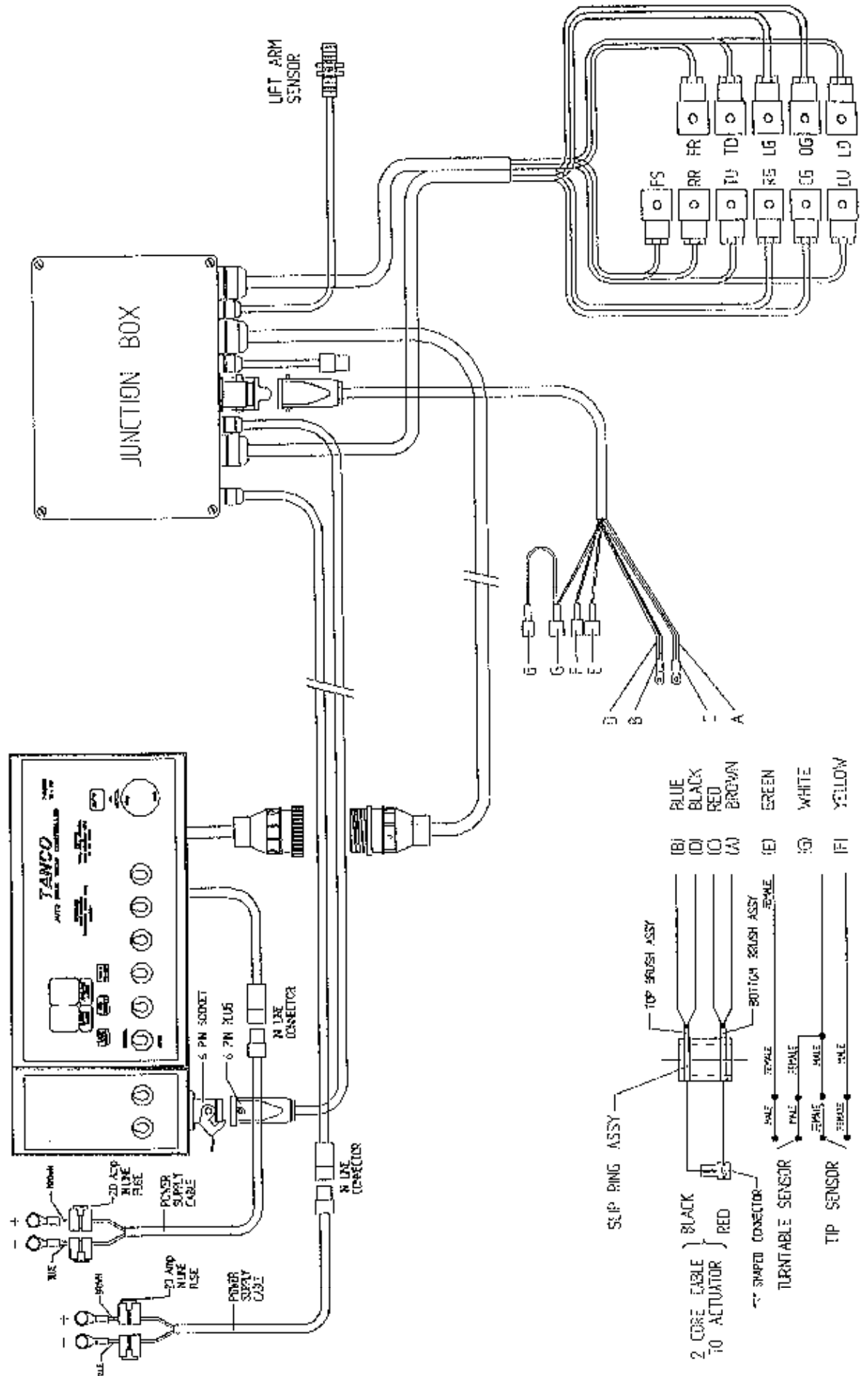
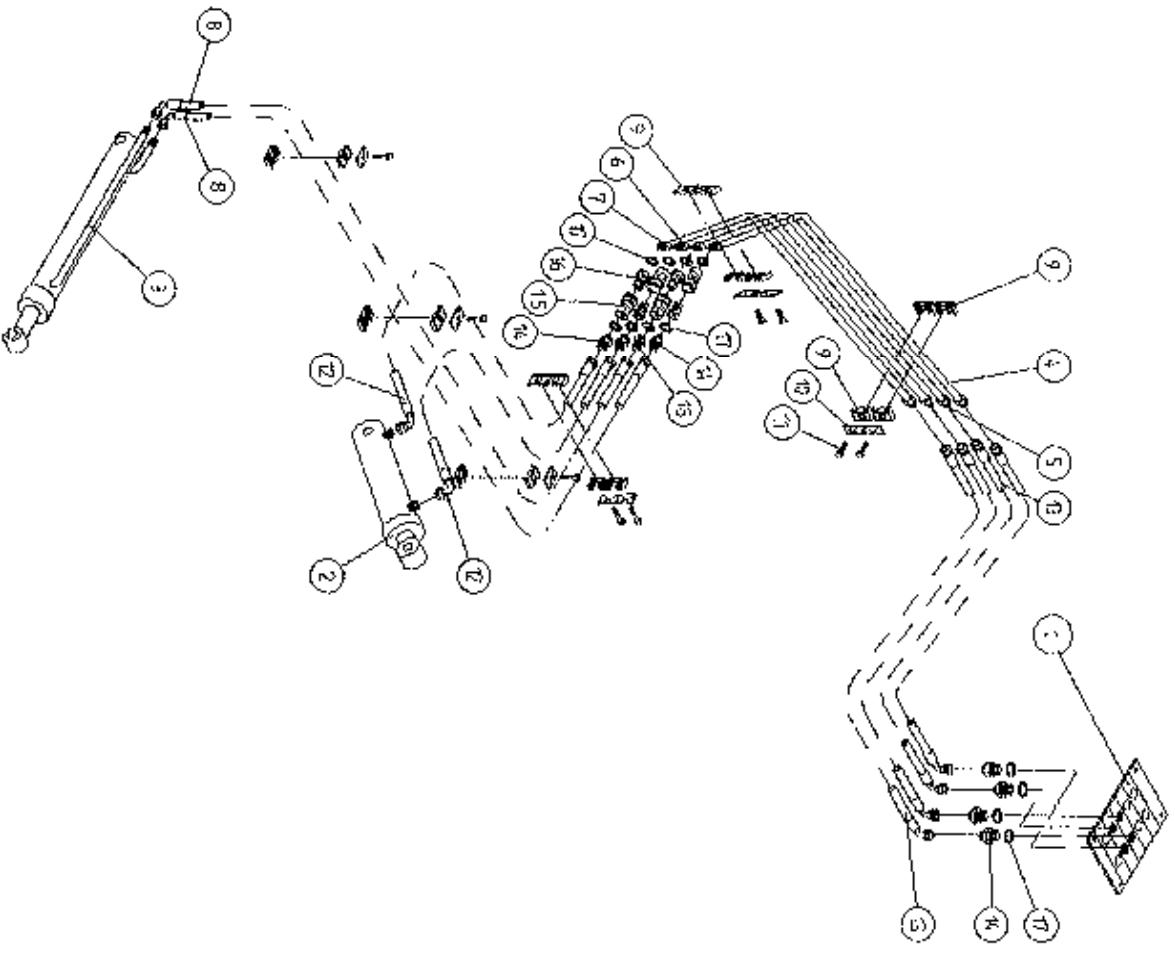


**TANCO AUTOWRAP
1050 A MODEL 1994
C/W "TWIN-PAK" LOADING ARM
OPERATORS HANDBOOK
AND
PARTS LIST
WD65-1050-ATP-MO494**

TANCO AUTOWRAP 1050A MODELS C/W "TWIN-PAK" LOADING ARM
 JUNCTION BOX AND CONTROLLER FOR 5 BANK VALVE



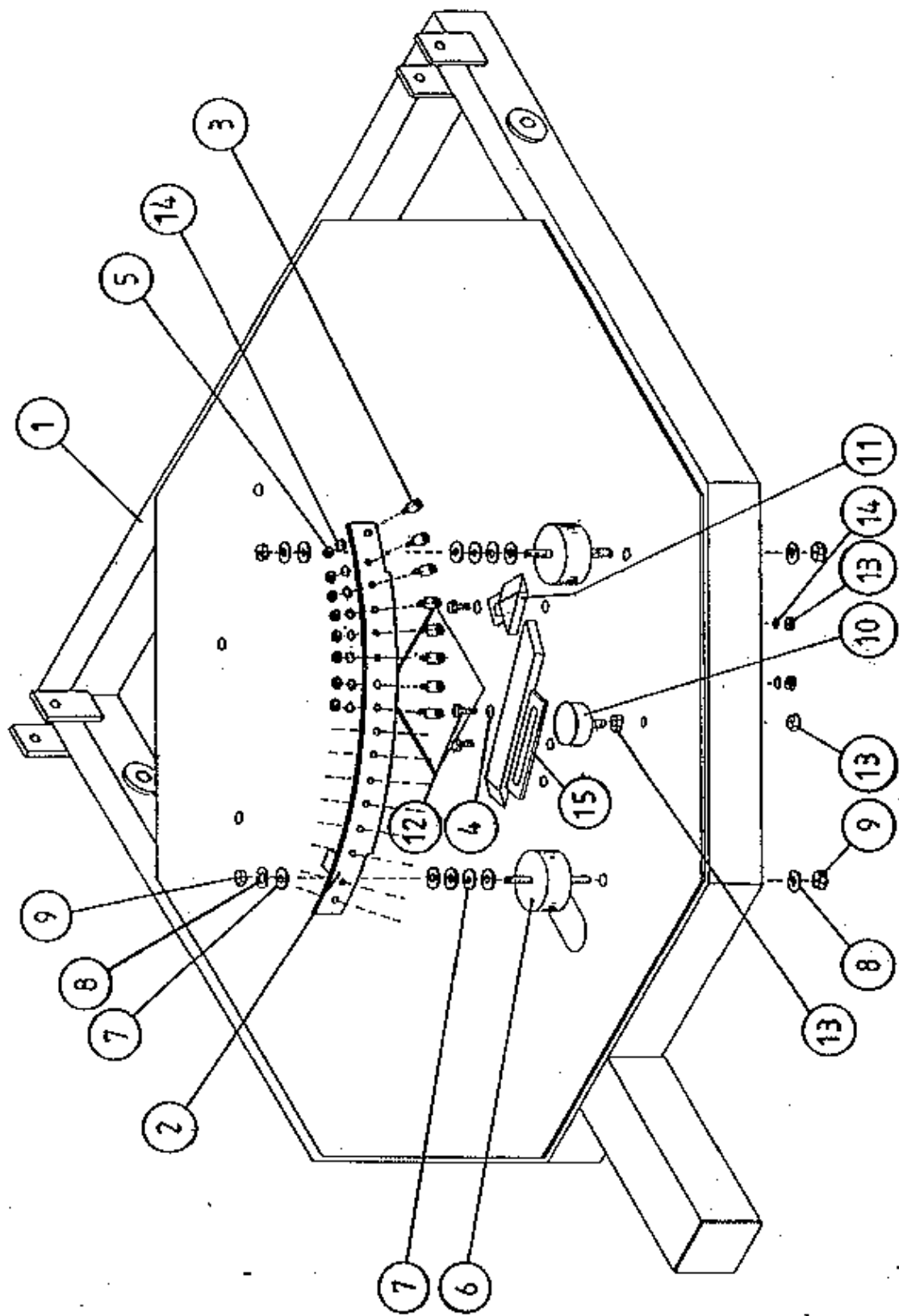
TANCO AUTOWRAP 1050A MODEL
 "TWIN-PAK" LIFT ARM HYDRAULIC COMPONENTS



TANCO AUTOWRAP 1050A MODEL 1994
"TWIN-PAK" LIFT ARM HYDRAULIC COMPONENTS
PARTS LIST

ITEM NO.	DESCRIPTION	QTY	PART-NO
1.	5 BANK SOLENOID VALVE	1	Z01-03-10-A5
2.	HYDRAULIC RAM D/A	1	Z01-01-DA980
3.	HYDRAULIC RAM D/A	1	Z01-01-140S
4.	HYDRAULIC PIPE (CHASSIS)	1	WD625-070
5.	HYDRAULIC PIPE (CHASSIS)	1	WD625-071
6.	HYDRAULIC PIPE (CHASSIS)	1	WD625-072
7.	HYDRAULIC PIPE (CHASSIS)	1	WD625-073
8.	144" ST/90 3/8" D/W HOSE	2	Z38-R2-144-S9
9.	PIPE CLAMP TOP/BOTTOM (DOUBLE)	9	Z01-24-26
10.	TOP CLAMPING PLATE	9	Z01-24-28
11.	M8 HEX HD BOLT x 35mm LONG	9	Z26-042B
12.	60" ST/90 3/8" D/W HOSE	2	Z38-R2-60-S9
13.	24" ST/90 3/8" D/W HOSE	4	Z38-R2-24-S9
14.	3/8" x 3/8" ADAPTOR	7	Z01-06-06-06
15.	3/8" FEMALE Q/R COUPLING	4	Z01-15-062
16.	3/8" MALE Q/R COUPLING	4	Z01-15-061
17.	3/8" DOWTY WASHER	12	Z01-04-0
18.	3/8" x 3/8" ADAPTOR FITTED WITH 0.06" RESTRICTOR	1	Z01-03-40

TANCO AUTOWRAP 1050 MODEL 1994
INDEXING QUADRANT ASSY 75% OVERLAP WITH 750mm FILM

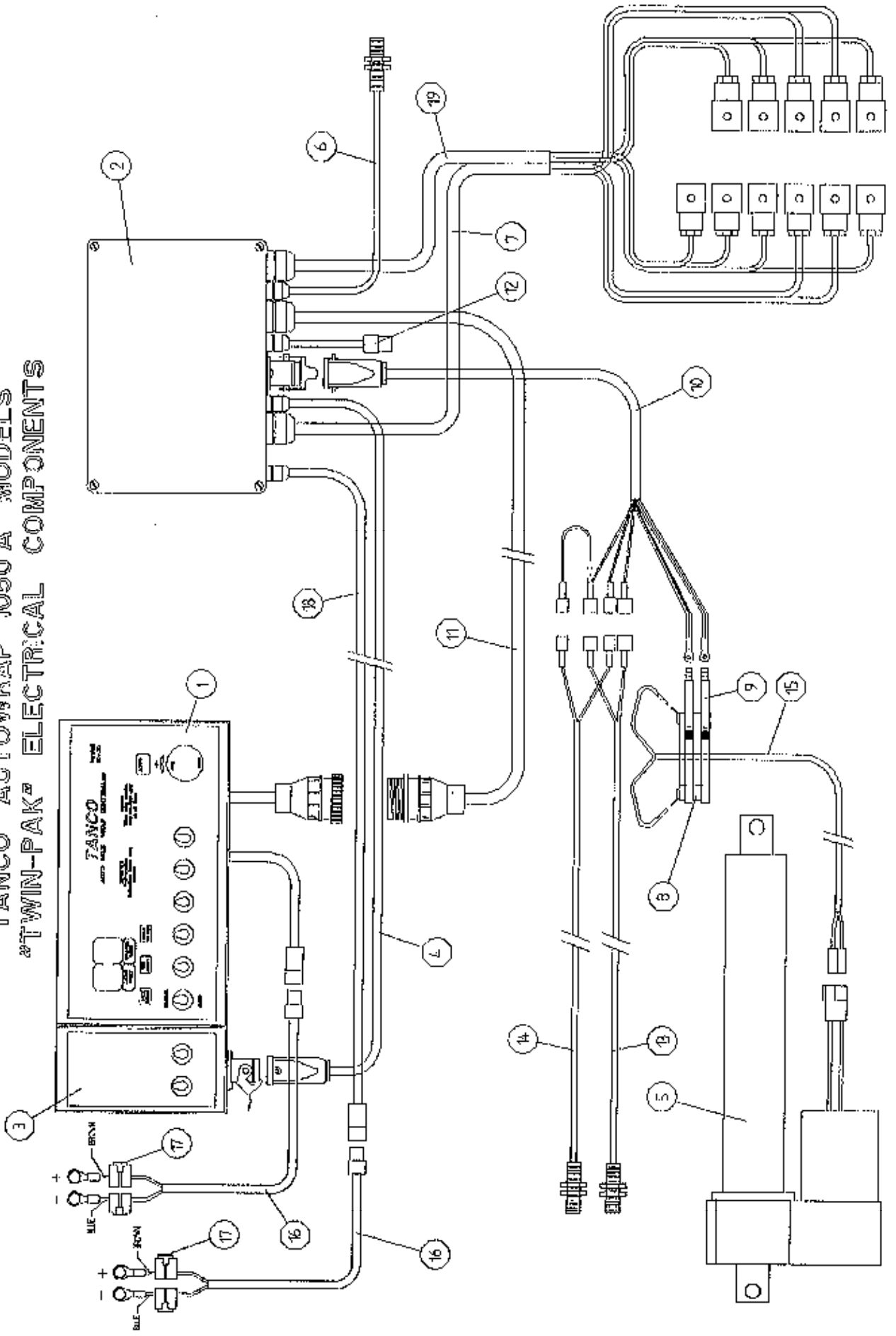


WD610-QA1

TANCO AUTOWRAP 1050S/1050A MODEL (TRAILED) 1994
INDEXING QUADRANT ASSEMBLY
75% OVERLAP WITH 750 mm WIDE FILM
PARTS LIST

2ITEM NO	DESCRIPTION	QTY.	PART-NO.
1	TIPPING FRAME ASSY	1	WD60-TF
2	QUADRANT ASSY.	1	WD623-QA
3	3/4" DIA CAM FOLLOWER (HEAVY DUTY) C/W GREASE NIPPLE	16	Z06-425
4	10mm DIA FLAT WASHERS	3	Z11-02-10
5	3/8" UNF LOCKNUTS (BINX)	16	Z20-06
6	RUBBER BUFFER 100mm DIA x 40mm LONG	2	Z40-22
7	16mm DIA FLAT WASHERS	10	Z10-02-16
8	16mm DIA SPRING WASHERS	4	Z12-02-16
9	M16 HEX NUT	4	Z18-16
10	RUBBER BUFFER 50mm DIA x 25mm LONG	1	Z40-23
11	CAM ASSY. (SHORT)	1	WD623-CAS
12	M10 HEX HD SET x 30mm LONG	3	Z26-062S
13	M10 HEX NUT	5	Z18-10
14	10mm DIA SPRING WASHER	19	Z12-02-10
15	CAM ASSY. (LONG)	1	WD623-CAL

TANCO AUTOWRAP 1050 A MODELS
"TWIN-PAK" ELECTRICAL COMPONENTS

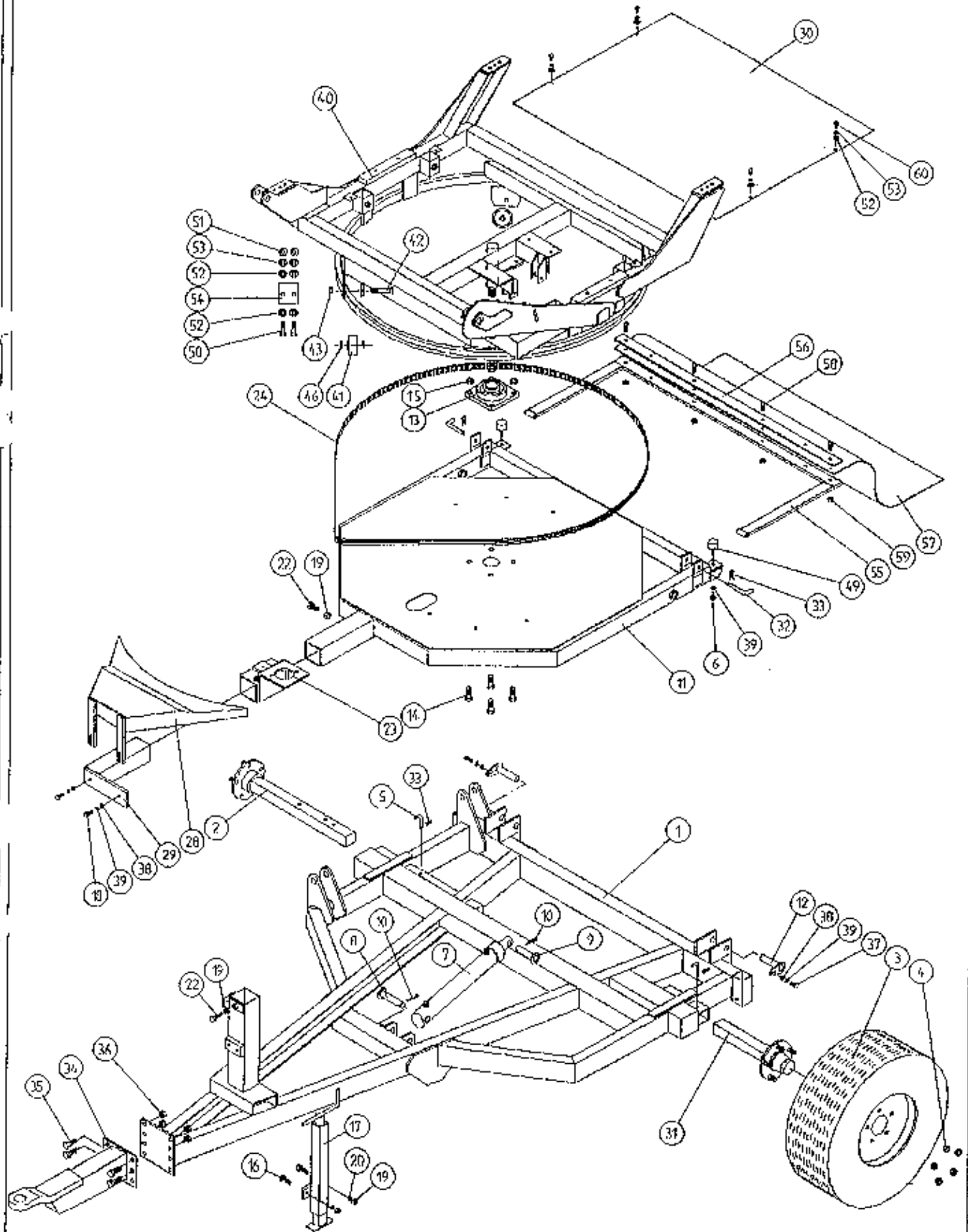


FILE NAME 9227 M

TANCO AUTOWRAP 1050A MODEL"TWIN-PAK" ELECTRICAL COMPONENTSPARTS LIST

ITEM NO	DESCRIPTION	QTY	PART-NO.
1.	CONTROL BOX	1	D606
2.	JUNCTION BOX (5 BANK VALVE)	1	ZDG-JB5
3.	ADDITIONAL CONTROL BOX FOR 1250A MODEL	1	ZDG-RCB
4.	LEAD FOR ADDITIONAL CONTROL BOX C/W HEARTING PLUG.	1	ZDG-CB
5.	WARNER LINEAR ACTUATOR	1	ZD605-510
6.	LIFT ARM SENSOR	1	ZD606-LAS
7.	ADDITIONAL LOOM FOR VALVE C/W HIRCHMANN FOR 1250A	1	ZD606-010
8.	SLIP RING ASSY	1	ZD605-308
9.	BRUSHES	1	ZD606-302
10.	7 CORE CABLE C/W HEARTING PLUG	1	D605-7C
11.	24 CORE INTER CONNECTING LEAD C/W CONNECTORS	1	D605-24C
12.	SYSTEM PRESSURE LEAD	1	ZD605-070
13.	ROTATING SENSOR	1	ZD606-RS
14.	TIP SENSOR	1	ZD606-TS
15.	TWO CORE CABLE FOR SLIP RING	1	D605-02C
16.	MAIN BATTERY LEAD	2	ZD606-030
17.	IN-LINE FUSE	4	ZD606-100
18.	MAIN LEAD FOR JUNCTION BOX	1	ZD606-050
19.	LOOM FOR VALVE C/W HIRSCHMAN	1	ZD606-081

TANCO AUTOWRAP 1050S/1050A MODELS MAIN ASSEMBLY



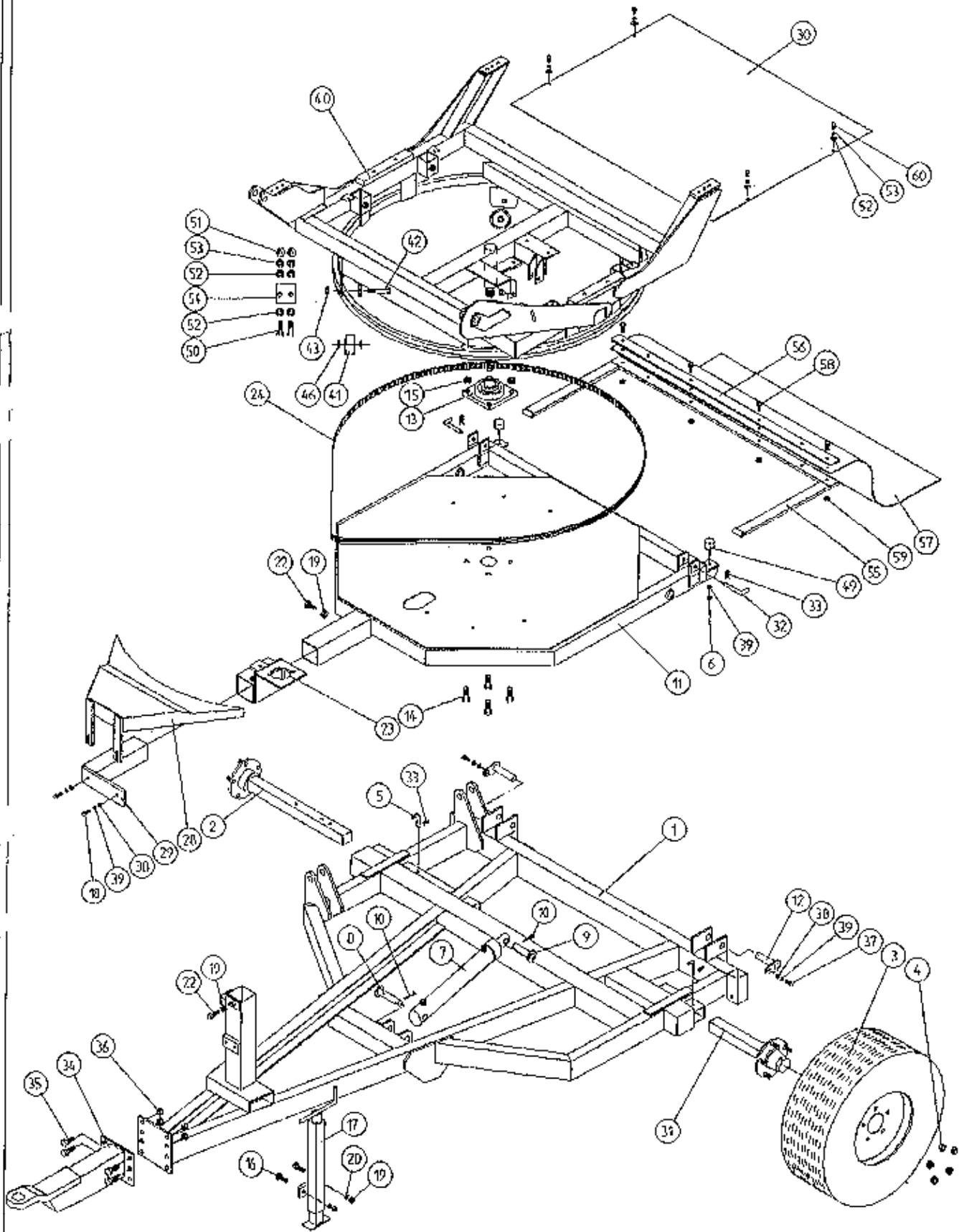
WD010 - PL9

TANCO AUTOWRAP 1050S/1050A MODEL
MAIN ASSEMBLY

PARTS LIST

ITEM NO.	DESCRIPTION	QTY	PART-NO.
1.	CHASSIS ASSY	1	WD60-CHA
2.	STUB AXLE (LONG)	1	Z04-033
3.	WHEELS	2	Z04-03
4.	WHEEL NUTS	10	Z04-0031
5.	BISSEL PIN	1	Z03-22-AW82
6.	M10 HEX NUT	2	Z18-10
7.	HYD. RAM	1	Z01-01-AR687
8.	RAM BOTTOM PIVOT PIN	1	Z03-02-330
9.	RAM TOP PIVOT PIN	1	Z03-03-50
10.	2" X 1/4" SPLIT PIN	2	Z03-21-29
11.	TIPPING FRAME ASSY	1	WD60-TF
12.	TIPPING FRAME PIVOT PIN C/W GREASE NIPPLE	2	Z03-01-905
13.	2" DIA FLANGE BEARING	1	Z06-49
14.	5/8" UNF HEX HD SET X 2" DIA	4	Z30B-064
15.	5/8" UNF LOCKNUT	4	Z20-10
16.	M12 HEX HD SET X 40MM LONG	2	Z26-084S
17.	SCREW JACK ASSY	1	WD60-JA
18.	M10 HEX HD ST X 30MM LONG	2	Z26-062S
19.	M12 HEX NUT	5	Z18-12
20.	12MM DIA SPRING WASHER	2	Z12-02-12
22.	M12 HEX HD SET X 30MM LONG	2	Z26-082S
23.	HYD MOTOR MOUNTING ASSY	1	WD60-HMB
24.	170" LONG X 1/2" PITCH X 1" WIDE TOOTHED BELT	1	Z05-02-AW20
28.	HYD MOTOR GUARD ASSY	1	WD60-HMG
29.	HYD MOTOR GUARD MOUNTING BRACKET	1	WD60-HAMB
30.	TURN TABLE COVER PLATE	1	WD60-093
31.	STUB AXLE (SHORT)	1	Z04-032
32.	BISSEL PIN	2	Z03-22-AW100
33.	4MM "R" CLIP	4	Z36-02
34.	HITCH ASSY	1	WD65-HIT
35.	M16 HEX HD SET X 45MM LONG	4	Z26-123S
36.	M16 LOCKNUTS	4	Z23-16
37.	M10 HEX HD SET X 25MM LONG (TUFLOCK)	2	Z26-061S
38.	10MM DIA MACHINED FLAT WASHER	4	Z11-02-10
39.	10MM DIA SPRING WASHER	5	Z12-02-10
40.	TURNTABLE ASSY	1	WD610-TA
41.	SUPPORT WHEELS (4" DIA)	4	Z06-466
42.	AXLE ASSY C/W GREASE NIPPLE	4	Z03-22-AW/AX Z39-60
43.	M20 LOCKNUTS	4	Z23-20
46.	SPACER	8	Z18-12
49.	BUFFER 50MM LONG DIA X 40MM LONG	2	Z40-20
50.	M8 HEX HD SET X 20MM LONG	4	Z26-039S
51.	M8 HEX NUT	4	Z18-08

TANCO AUTOWRAP 1050S/1050A MODELS MAIN ASSEMBLY

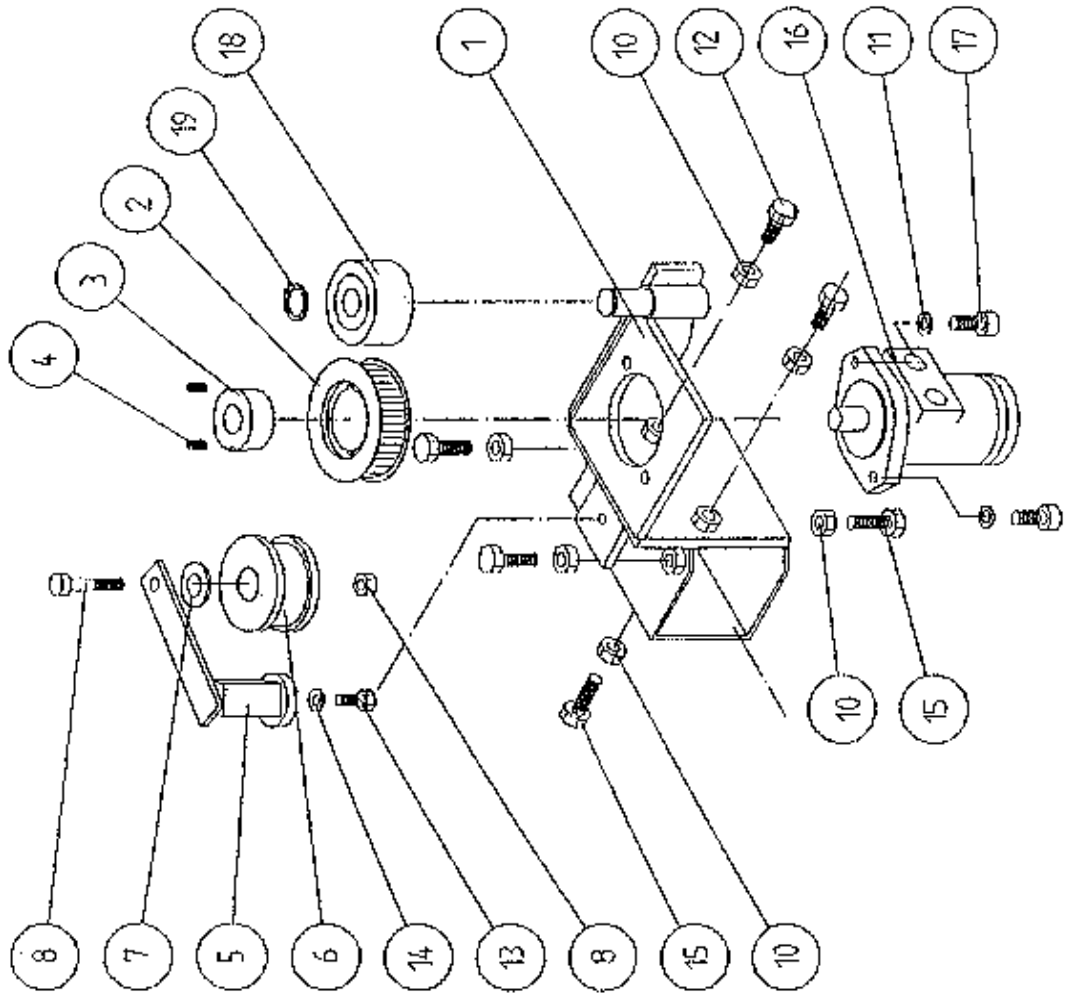


WD010 - PL0

TANCO AUTOWRAP 1050S/1050A MODEL
MAIN ASSEMBLY
PARTS LIST

ITEM NO.	DESCRIPTION	QTY	PART-NO.
52.	8MM DIA FLAT WASHER (MUD FLAT)	8	Z11-02-08
53.	8MM DIA SPRING WASHER	8	Z12-02-08
54.	SCRAPER	2	WD60-705
55.	RUBBER MAT MOUNTING ASSY	1	WD63-MMF
56.	CLAMPING PLATE	1	WD63-1300
57.	BALE MAT	1	Z05-02AW
58.	M8 HEX HD BOLT X 50MM LONG	4	Z26-045B
59.	M8 LOCKNUTS	4	Z23-08
60.	M8 CHEESE HD ST X 20MM LONG	4	Z13-19-08-20

TANCO AUTOWRAP 1994 MODEL
HYDRAULIC MOTOR DRIVE ASSEMBLY

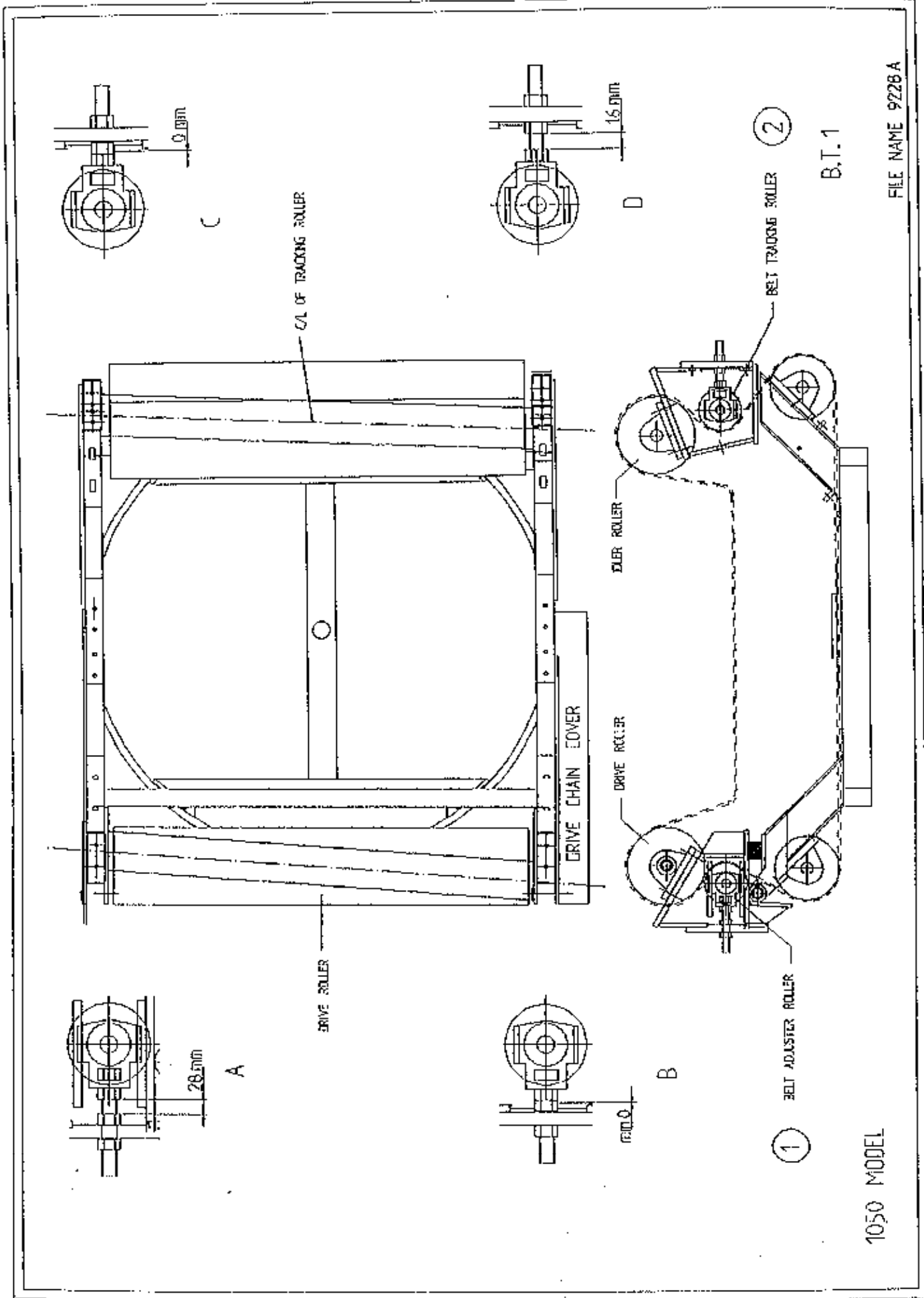


WD60-PL27

TANCO AUTOWRAP 1994 MODEL
HYDRAULIC MOTOR DRIVE ASSEMBLY

PARTS LIST

ITEM NO.	DESCRIPTION	QTY.	PART-NO.
1.	HYDRAULIC MOTOR MOUNTING ASSY.	1	WD65-HMB
2.	4" DIA X 1/2" PITCH TOOTHED PULLY	1	Z09-005-AW1
3.	TAPER LOCK BUSH TO SUIT 1" DIA SHAFT	1	Z09-005-AW2
4.	M10 STUDS X 15MM	2	Z28-01
5.	ROSTA TENSIONING UNIT ARM	1	Z06-454
6.	STEPPED ROLLER C/W BEARINGS	1	Z06-456
7.	SPACER	1	WD60-798
8.	M10 HEX HD BOLT X 60MM LONG	1	Z26-067B
9.	M10 LOCKNUT	1	Z23-10
10.	M12 HEX NUT	6	Z18-12
11.	12MM DIA SPRING WASHER	2	Z12-02-12
12.	M12 HEX HD SET X 30MM LONG	2	Z26-082S
13.	M10 HEX HD SET X 25MM LONG (TUFLOCK)	1	Z26-061S
14.	10MM DIA SPRING WASHER	1	Z12-02-10
15.	M12 HEX HD SET X 40MM LONG	6	Z26-084S
16.	HYDRAULIC MOTOR C.L.	1	Z01-02-AR75
17.	M12 SOCKET HD SCREW X 30MM LONG	2	Z13-6-12X30
18.	ROLLER C/W BEARINGS	1	Z06-457
19.	CIRCLIP	1	Z28-525



1050 MODEL

B.T.1

FILE NAME 9228A

TANCO AUTOWRAP 1994 DRIVE BELT TENSIONING SYSTEM

BELT TENSIONING PROCEDURE

1. CHECK THAT HYDRAULIC MOTOR MOUNTING BRACKET IS SECURE IN POSITION.
2. LOOSEN M10 BOLT WHICH CLAMPS BELT TENSIONER BODY TO MOTOR MOUNT.
3. TENSION BELT BY ADJUSTING TENSIONER USING SPANNER IN DIRECTION OF ARROW "X" UNTIL SETTING CF 30 IS REACHED.
4. RE-TIGHTEN M10 BOLT TO SECURE TENSIONER IN POSITION.

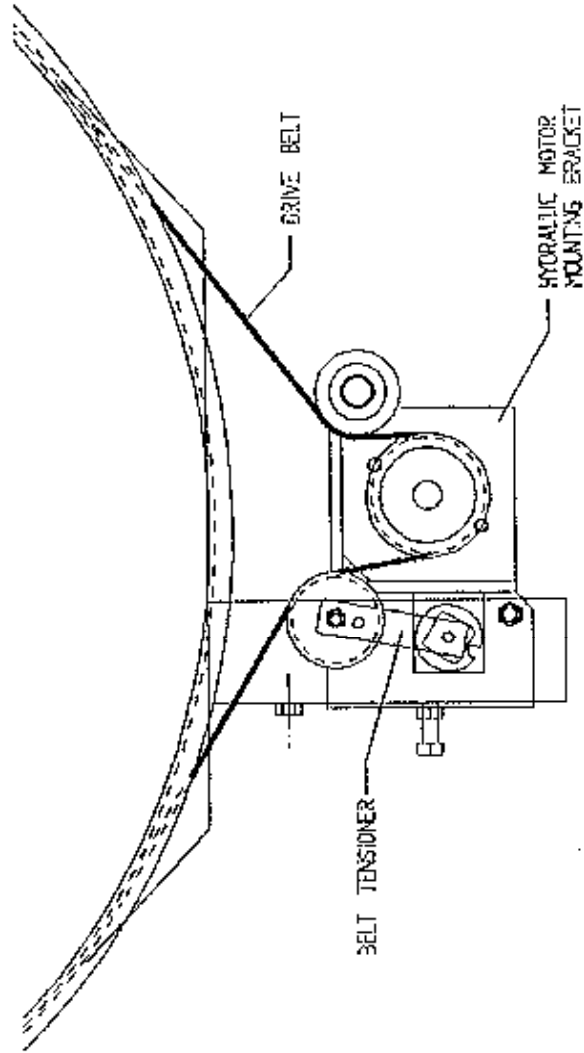
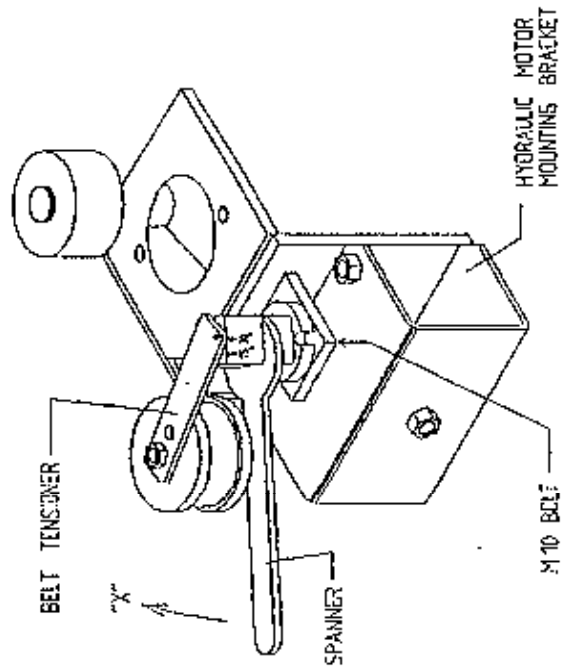
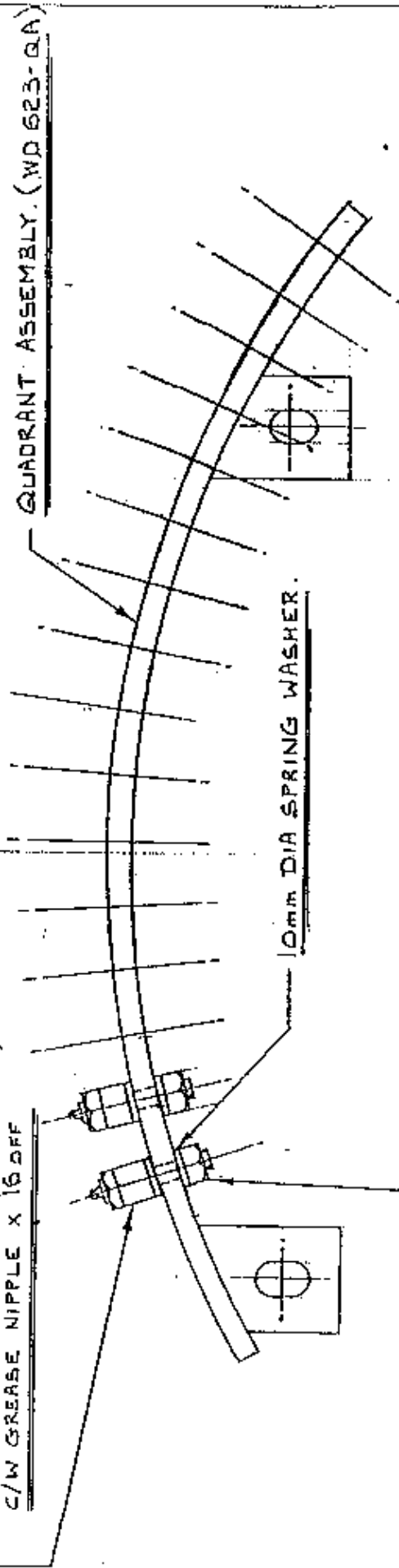


Fig. 3

NOTE:

WHEN FITTING $\frac{3}{4}$ " DIA CAM FOLLOWERS TO QUADRANT ASSEMBLY IT IS NECESSARY TO TORQUE NUTS TO 26 FT/LB.

$\frac{3}{4}$ " DIA CAM FOLLOWER (HEAVY DUTY)
C/W GREASE NIPPLE X 16 OFF



PLAN VIEW OF QUADRANT ASSEMBLY.

NOTE:

ENSURE THAT M20 HEX HD BOLT X 110mm LONG USED TO MOUNT 4" DIA SUPPORT WHEELS ON TURNABLE ASSEMBLY IS POSITIONED WITH BOLT HEAD TO INSIDE TO AVOID FOULING $\frac{3}{4}$ " DIA CAM FOLLOWER.

TANCO AUTOWRAP 1050 MODEL(1994)

QUADRANT ASSEMBLY INSTRUCTIONS.

BRAKE TIMING INSTRUCTIONS

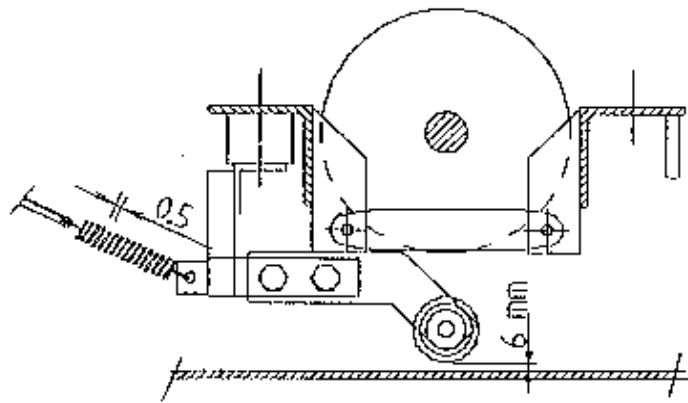
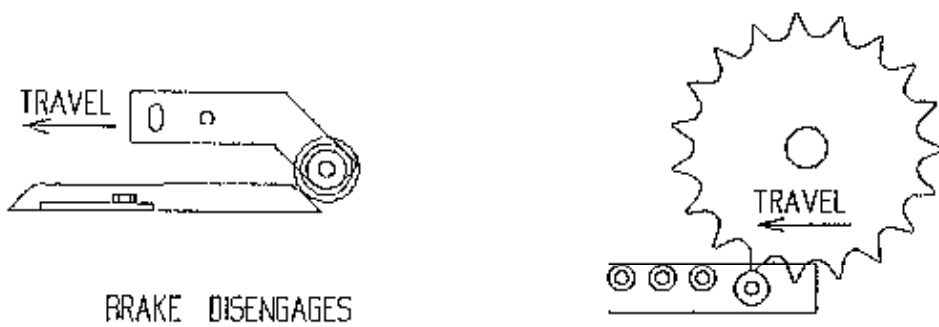


FIG 2



BRAKE DISENGAGES

FIG 3

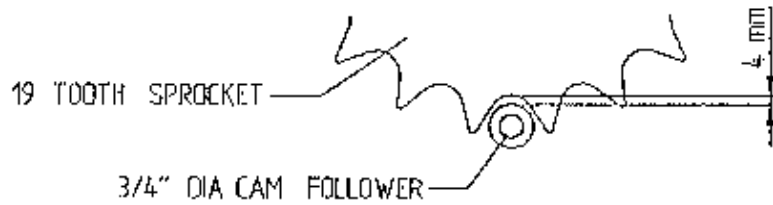


FIG 4

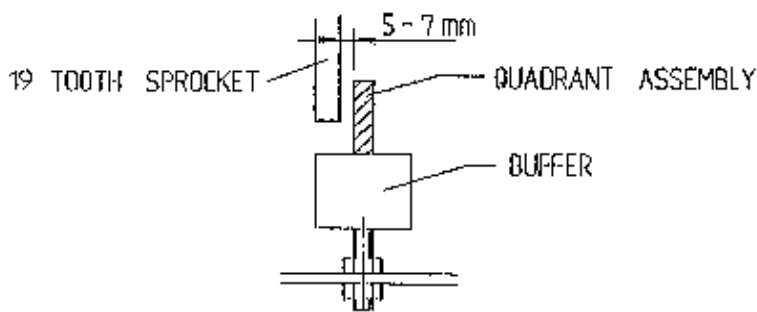
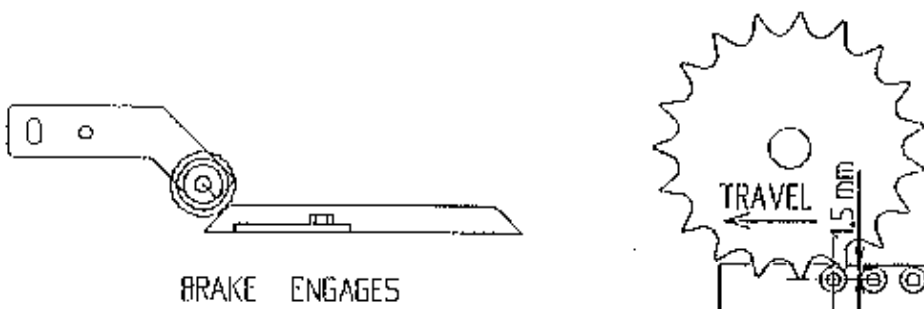


FIG 5



BRAKE ENGAGES

FIG 6

WD625-HC1
TANCO AUTOWRAP 1050 A MODEL (1994)
"TWIN-PAK" HYDRAULIC COMPONENTS
PARTS LIST

ITEM NO	DESCRIPTION	QTY	PART-NO
1.	5 BANK SOLENOID VALVE	1	Z01-03-10-A5
2.	HYDRUALIC MOTOR C.L.	1	Z01-02-AR/75
3.	CROSS LINE RELIEF VALVE	1	Z01-03-002
4.	1/2" B.S.P. BOTTOM BANJO BOLT (SPECIAL)	2	Z01-03-002B
5.	HYDRUALIC RAM (TIPPING FRAME)	1	Z01-01-AR687
6.	1/2" DOWTY WASHER	17	Z01-04-03
7.	1/2" NON RETURN VALVE	1	Z01-03-017
8.	1/2" X 3/8" ADAPTOR	6	Z01-06-06-08
9.	1/2" X 1/2" ADAPTOR	5	Z01-06-08-08
10.	1/2" MALE END Q/R COUPLING	2	Z01-15-081
11.	HYD. RAM (FOR LIFT ARM)	1	Z01-01-AW012
12.	96" ST/980 3/8" D/W HOSE	3	Z38-R2-96-S9
13.	60" ST/90 3/8" D/W HOSE	2	Z38-R2-60-S9
14.	72" ST/90 3/8" D/W HOSE	2	Z38-R2-72-S9
15.	96" ST/90 1/2" D/W HSOE	1	Z12-R1-96-S9
16.	120" ST/90 3/8" D/W HOSE	2	Z38-R2-120S9
17.	17" ST/ST 3/8" D/W HOSE	2	Z38-R2-17SS
18.	24" ST/90 1/2" D/W HOSE	1	Z12-R1-24-S9
19.	24" ST/90 3/8" D/W HOSE	1	Z38-R2-24-S9
20.	FILTER	1	Z01-24-08
21.	3/8" X 3/8" ADAPTOR FITTED WITH 0.06" RESTRICTOR		Z01-03-40
2.	1/2" MALE X 1/2" FEMALE ADAPTOR	1	Z01-05-08-08
23.	1/2" MALE "T" PIECE	1	Z01-11-003
24.	HYD. RAM D/A (PULL DOWN ARM)	1	Z01-01-AW25
25.	1/4" DOWTY WASHER	1	Z01-04-01
26.	1/4" X 3/8" ADAPTOR	1	Z01-06-04-06
27.	1/2" FEMALE X 1/2" FEMALE 90 ELBOW	1	Z01-14-018
28.	3/8" MALE/FEMALE 90 ELBOW	2	Z01-14-015
29.	IN LINE FLOW DIVIDER	1	Z01-03-10-A6
30.	3/8" DOWTY WASHER	11	Z01-04-02
31.	3/8" X 3/8" ADAPTOR	10	Z01-06-06-06
32.	3/8" MALE X 3/8" MALE X 3/8" FEMALE "T" PIECE	2	Z01-12-002
33.	OVER CENTRE VALVE	1	Z01-03-10-A8

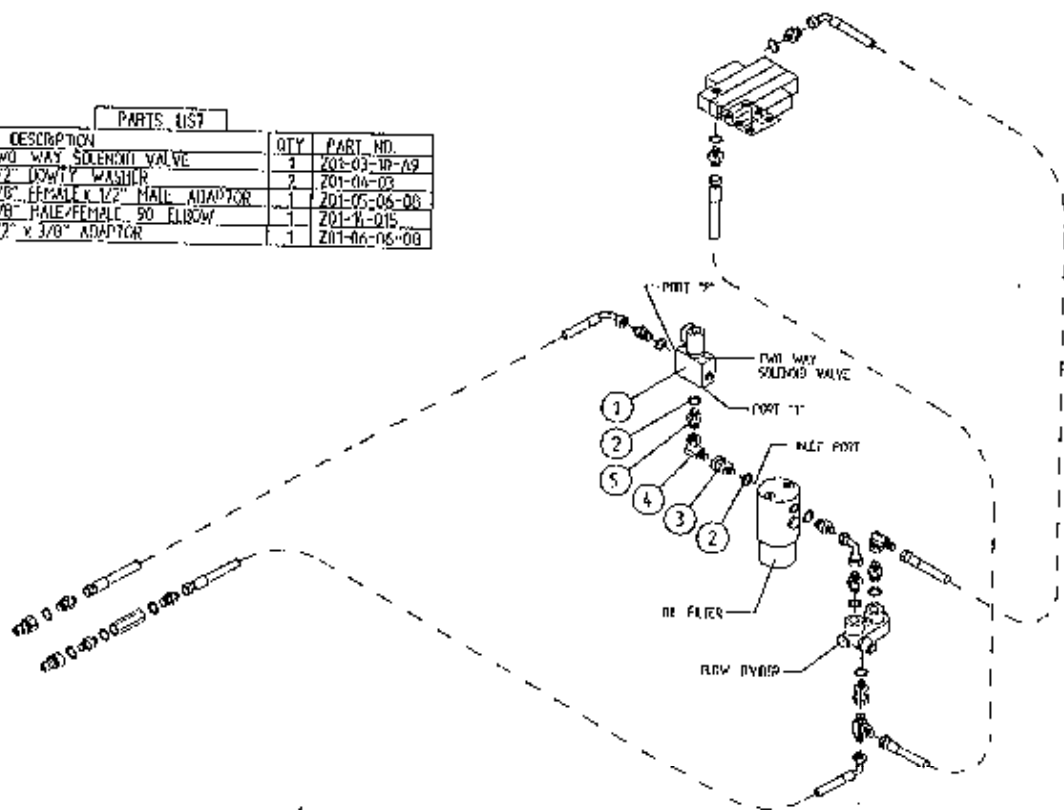
**INSTRUCTION FOR FITTING TWO WAY SOLENOID VALVE TO TANCO
AUTOWRAP MODELS 400A, 500A, 1050A, 1250A.**

**REQUIRED WHEN OPERATING MACHINES ON TRACTORS WITH CLOSED CENTRE
HYDRAULIC SYSTEMS.**

1. Disconnect st/90 hose from inlet port on oil filter.
2. Connect port "T" on solenoid valve assembly to inlet port on oil filter.
3. Reconnect st/90 hose to port "P" on solenoid valve.
4. Connect 2 pin female connector to existing 2 pin connector at junction box.
5. Change the seventh controller function setting from n to J. See instruction manual for further information.

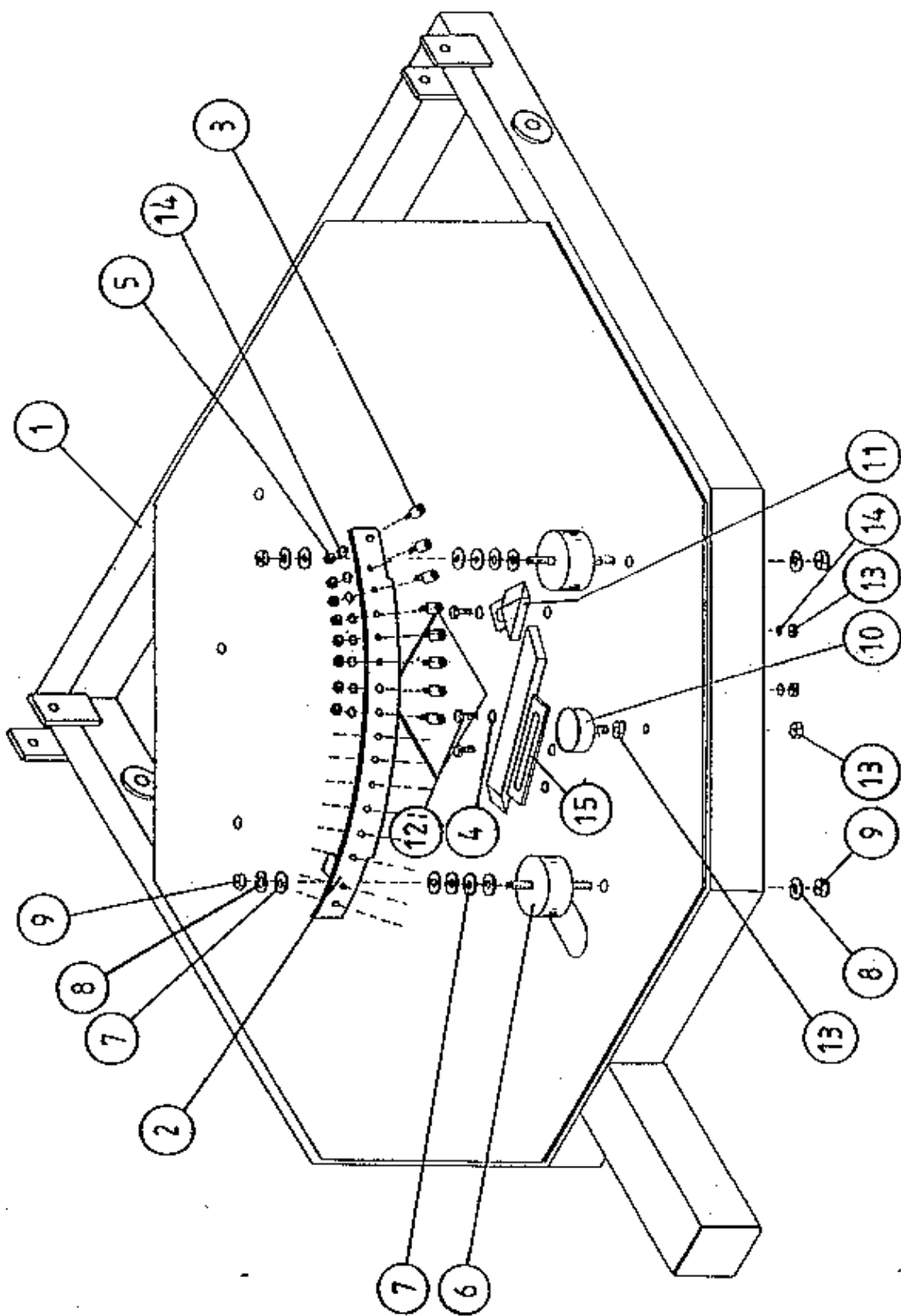
**TANCO AUTOWRAP 400A/500A/1050A/1250A MODEL (1994)
TWO WAY SOLENOID VALVE KIT PART NO. Z01-03-010A**

PARTS LIST			
ITEM NO.	DESCRIPTION	QTY	PART NO.
1	TWO WAY SOLENOID VALVE	1	Z01-03-10-A9
2	1/2" LOCKWY WASHER	2	Z01-04-03
3	3/8" HEXAGLE X 1/2" MALE ADAPTOR	1	Z01-05-06-08
4	3/8" MALE/FEMALE 90 ELBOW	1	Z01-04-015
5	1/2" X 3/8" ADAPTOR	1	Z01-06-06-08



FILE NAME 9278C

TANCO AUTOWRAP 1050 MODEL 1994
 INDEXING QUADRANT ASSY 75% OVERLAP WITH 750mm FILM



WD610-QA1

TANCO AUTOWRAP 1050S/1050A MODEL (TRAILED) 1994
INDEXING QUADRANT ASSEMBLY
75% OVERLAP WITH 750 mm WIDE FILM
PARTS LIST

2ITEM NO	DESCRIPTION	QTY.	PART-NO.
1	TIPPING FRAME ASSY	1	WD60-TF
2	QUADRANT ASSY.	1	WD623-QA
3	3/4" DIA CAM FOLLOWER (HEAVY DUTY) C/W GREASE NIPPLE	16	Z06-425
4	10mm DIA FLAT WASHERS	3	Z11-02-10
5	3/8" UNF LOCKNUTS (BINX)	16	Z20-06
6	RUBBER BUFFER 100mm DIA x 40mm LONG	2	Z40-22
7	16mm DIA FLAT WASHERS	10	Z10-02-16
8	16mm DIA SPRING WASHERS	4	Z12-02-16
9	M16 HEX NUT	4	Z18-16
10	RUBBER BUFFER 50mm DIA x 25mm LONG	1	Z40-23
11	CAM ASSY. (SHORT)	1	WD623-CAS
12	M10 HEX HD SET x 30mm LONG	3	Z26-062S
13	M10 HEX NUT	5	Z18-10
14	10mm DIA SPRING WASHER	19	Z12-02-10
15	CAM ASSY. (LONG)	1	WD623-CAL

WD605-PL5

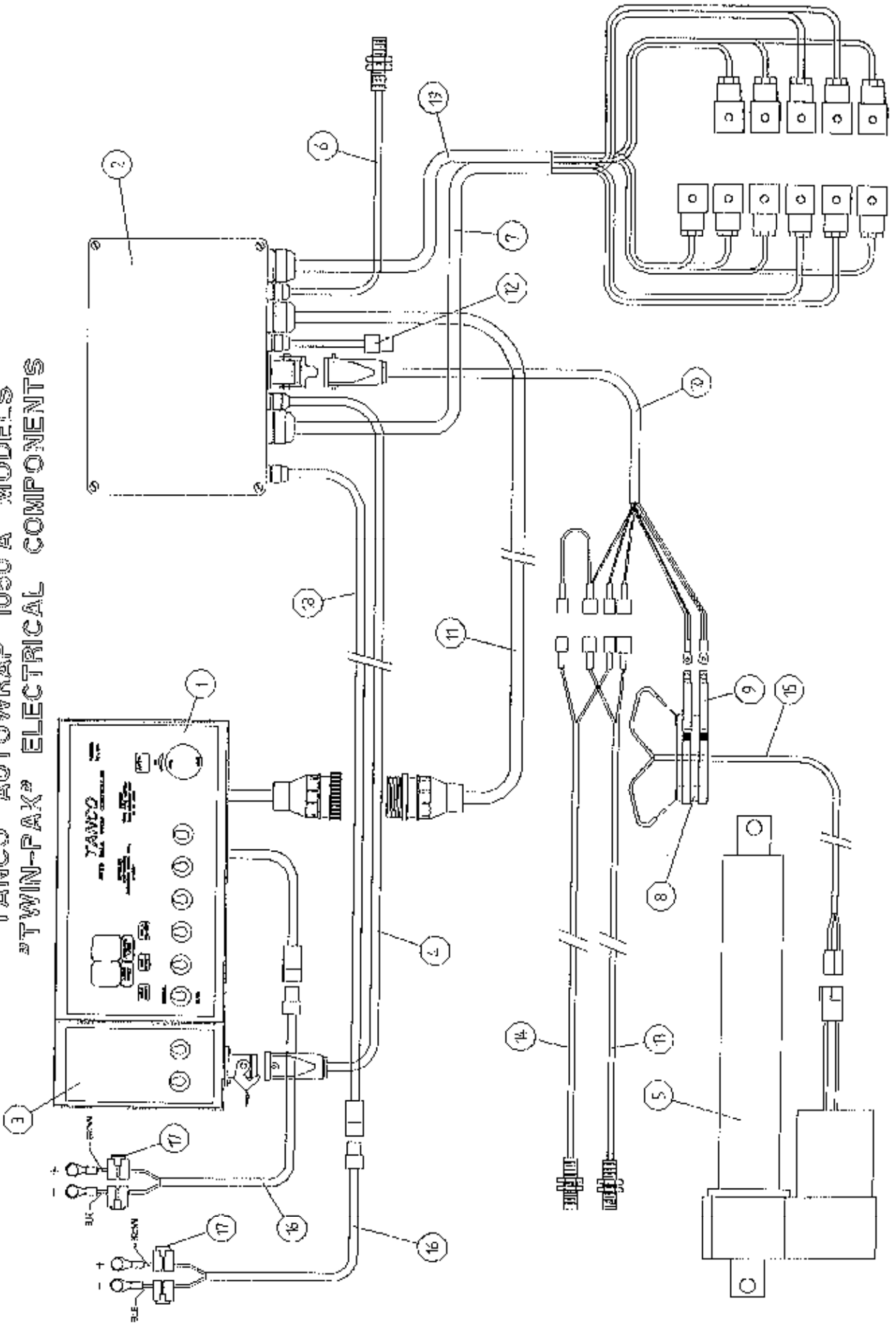
TANCO AUTOWRAP CUT AND START UNIT 1994

SENSOR AND MAGNET MOUNTING BRACKETS

PARTS LIST

ITEM NO.	DESCRIPTION	QTY.	PART-NO.
1.	MAGNET MOUNTING BRACKET	1	WD605-57
2.	MAGNET	1	D6043
3.	M6 HEX HD SET x 30mm LONG	1	Z26-022S
4.	6mm DIA FLAT WASHER	1	Z11-02-06
5.	M6 LOCKNUT	1	Z23-06
6.	M8 HEX HD SET x 25mm LONG	2	Z26-040S
7.	M8 LOCKNUT (NYLOCK)	1	Z23-08
8.	8mm DIA SPRING WASHER	3	Z12-02-08
9.	M8 HEX NUT	3	Z18-08
10.	M8 HEX HD SET x 100mm LONG	1	Z26-057S
11.	SENSOR MOUNTING BRACKET	1	WD605-58
12.	ROTATE SENSOR MOUNTING BRACKET	1	WD605-140
13.	MOUNTING FLAT	1	WD605-07
14.	M8 HEX HD SET x 20mm LONG	1	Z26-020S

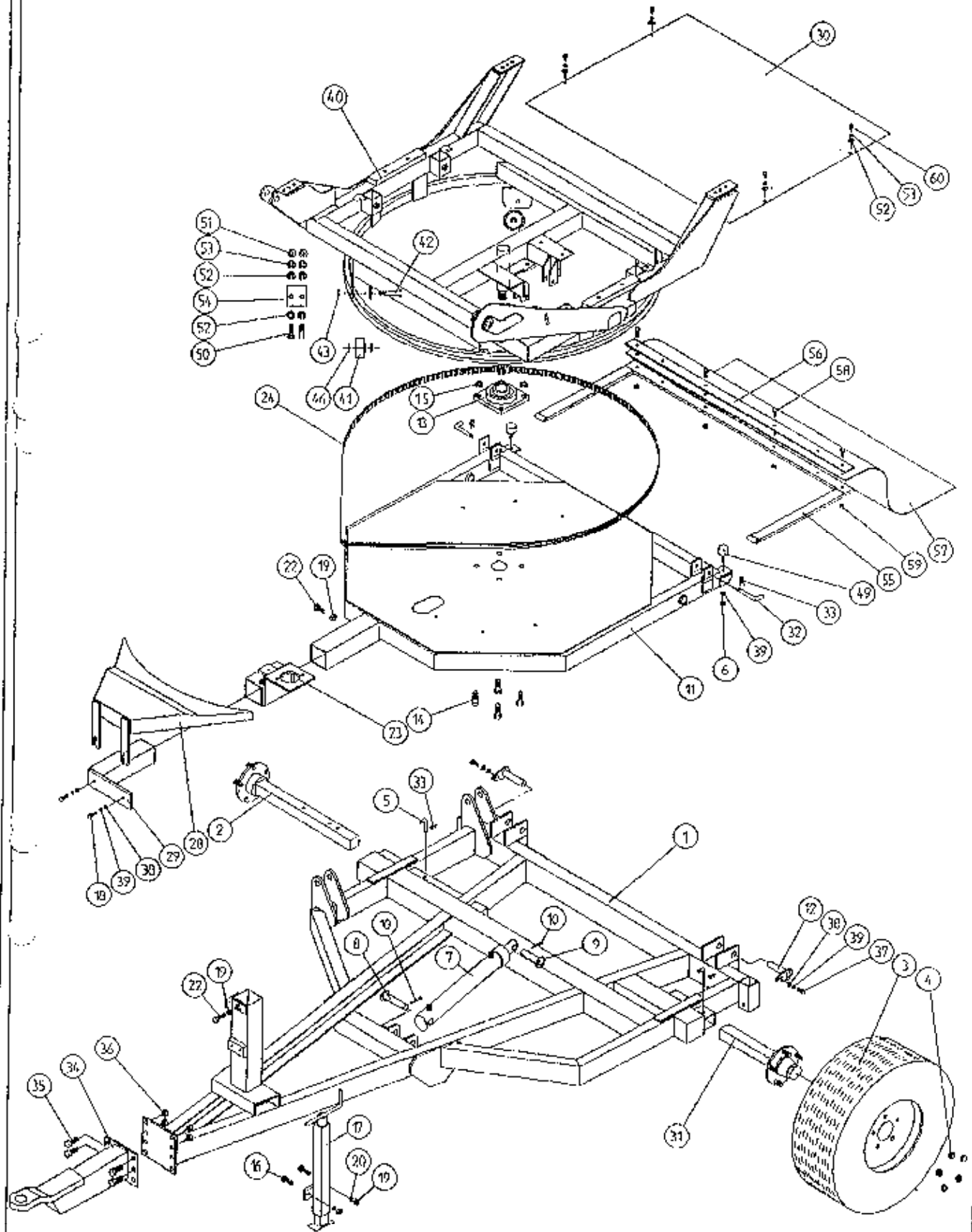
TANCO AUTOWRAP 1050 A MODELS
 "TWIN-PAK" ELECTRICAL COMPONENTS



TANCO AUTOWRAP 1050A MODEL"TWIN-PAK" ELECTRICAL COMPONENTSPARTS LIST

ITEM NO	DESCRIPTION	QTY	PART-NO.
1.	CONTROL BOX	1	D606
2.	JUNCTION BOX (5 BANK VALVE)	1	ZDG-JB5
3.	ADDITIONAL CONTROL BOX FOR 1250A MODEL	1	ZDG-RCB
4.	LEAD FOR ADDITIONAL CONTROL BOX C/W HEARTING PLUG.	1	ZDG-CB
5.	WARNER LINEAR ACTUATOR	1	ZD605-510
6.	LIFT ARM SENSOR	1	ZD606-178
7.	ADDITIONAL LOOM FOR VALVE C/W HIRCHMANN FOR 1250A	1	ZD606-010
8.	SLIP RING ASSY	1	ZD605-308
9.	BRUSHES	1	ZD606-302
10.	7 CORE CABLE C/W HEARTING PLUG	1	D605-7C
11.	24 CORE INTER CONNECTING LEAD C/W CONNECTORS	1	D605-24C
12.	SYSTEM PRESSURE LEAD	1	ZD605-070
13.	ROTATING SENSOR	1	ZD606-RS
14.	TIP SENSOR	1	ZD606-TS
15.	TWO CORE CABLE FOR SLIP RING	1	D605-02C
16.	MAIN BATTERY LEAD	2	ZD606-030
17.	IN-LINE FUSE	4	ZD606-100
18.	MAIN LEAD FOR JUNCTION BOX	1	ZD606-050
19.	LOOM FOR VALVE C/W HIRSCHMAN	1	ZD606-081

TANCO AUTOWRAP 1050S/1050A MODELS MAIN ASSEMBLY



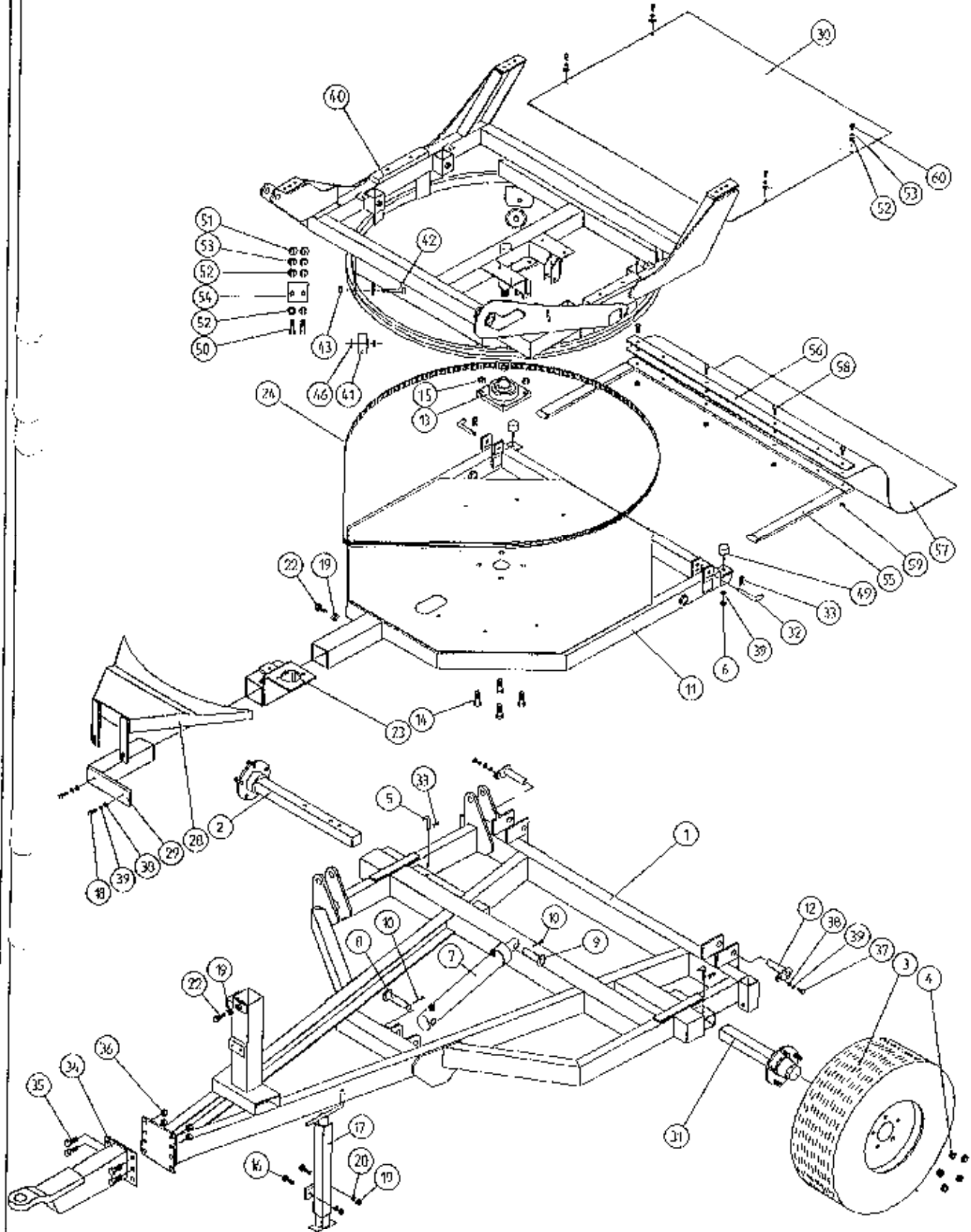
WD810 - P1.9

TANCO AUTOWRAP 1050S/1050A MODEL
MAIN ASSEMBLY

PARTS LIST

ITEM NO.	DESCRIPTION	QTY	PART-NO.
1.	CHASSIS ASSY	1	WD60-CHA
2.	STUB AXLE (LONG)	1	Z04-033
3.	WHEELS	2	Z04-03
4.	WHEEL NUTS	10	Z04-0031
5.	BISSEL PIN	1	Z03-22-AW82
6.	M10 HEX NUT	2	Z18-10
7.	HYD. RAM	1	Z01-01-AR687
8.	RAM BOTTOM PIVOT PIN	1	Z03-02-330
9.	RAM TOP PIVOT PIN	1	Z03-03-50
10.	2" X 1/4" SPLIT PIN	2	Z03-21-29
11.	TIPPING FRAME ASSY	1	WD60-TF
12.	TIPPING FRAME PIVOT PIN C/W GREASE NIPPLE	2	Z03-01-905
13.	2" DIA FLANGE BEARING	1	Z06-49
14.	5/8" UNF HEX HD SET X 2" DIA	4	Z30B-064
15.	5/8" UNF LOCKNUT	4	Z20-10
16.	M12 HEX HD SET X 40MM LONG	2	Z26-084S
17.	SCREW JACK ASSY	1	WD60-JA
18.	M10 HEX HD ST X 30MM LONG	2	Z26-062S
19.	M12 HEX NUT	5	Z18-12
20.	12MM DIA SPRING WASHER	2	Z12-02-12
22.	M12 HEX HD SET X 30MM LONG	2	Z26-082S
23.	HYD MOTOR MOUNTING ASSY	1	WD60-HMB
24.	170" LONG X 1/2" PITCH X 1" WIDE TOOTHED BELT	1	Z05-02-AW20
28.	HYD MOTOR GUARD ASSY	1	WD60-HMG
29.	HYD MOTOR GUARD MOUNTING BRACKET	1	WD60-HAMB
30.	TURN TABLE COVER PLATE	1	WD60-093
31.	STUB AXLE (SHORT)	1	Z04-032
32.	BISSEL PIN	2	Z03-22-AW100
33.	4MM "R" CLIP	4	Z36-02
34.	HITCH ASSY	1	WD65-HIT
35.	M16 HEX HD SET X 45MM LONG	4	Z26-123S
36.	M16 LOCKNUTS	4	Z23-16
37.	M10 HEX HD SET X 25MM LONG (TUFLOCK)	2	Z26-061S
38.	10MM DIA MACHINED FLAT WASHER	4	Z11-02-10
39.	10MM DIA SPRING WASHER	5	Z12-02-10
40.	TURNTABLE ASSY	1	WD610-TA
41.	SUPPORT WHEELS (4" DIA)	4	Z06-466
42.	AXLE ASSY C/W GREASE NIPPLE	4	Z03-22-AW/AX Z39-60
43.	M20 LOCKNUTS	4	Z23-20
46.	SPACER	8	Z18-12
49.	BUFFER 50MM LONG DIA X 40MM LONG	2	Z40-20
50.	M8 HEX HD SET X 20MM LONG	4	Z26-039S
51.	M8 HEX NUT	4	Z18-08

TANCO AUTOWRAP 1050S/1050A MODELS MAIN ASSEMBLY

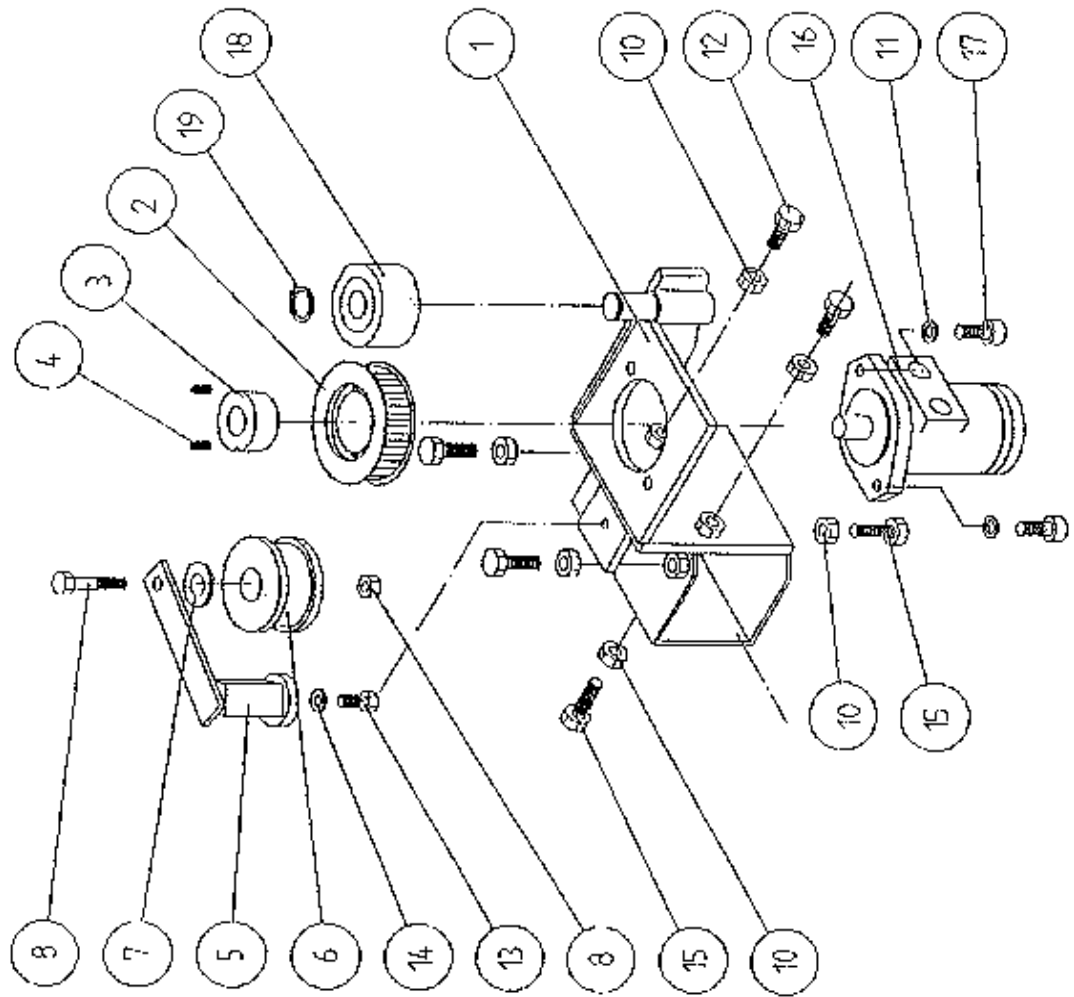


WD610 - PL9

TANCO AUTOWRAP 1050S/1050A MODEL
MAIN ASSEMBLY
PARTS LIST

ITEM NO.	DESCRIPTION	QTY	PART-NO.
52.	8MM DIA FLAT WASHER (MUD FLAT)	8	Z11-02-08
53.	8MM DIA SPRING WASHER	8	Z12-02-08
54.	SCRAPER	2	WD60-705
55.	RUBBER MAT MOUNTING ASSY	1	WD63-MMF
56.	CLAMPING PLATE	1	WD63-1300
57.	BALE MAT	1	Z05-02AW
58.	M8 HEX HD BOLT X 50MM LONG	4	Z26-045B
59.	M8 LOCKNUTS	4	Z23-08
60.	M8 CHEESE HD ST X 20MM LONG	4	Z13-19-08-20

TANCO AUTOWRAP 1994 MODEL
HYDRAULIC MOTOR DRIVE ASSEMBLY



TANCO AUTOWRAP 1994 MODEL
HYDRAULIC MOTOR DRIVE ASSEMBLY

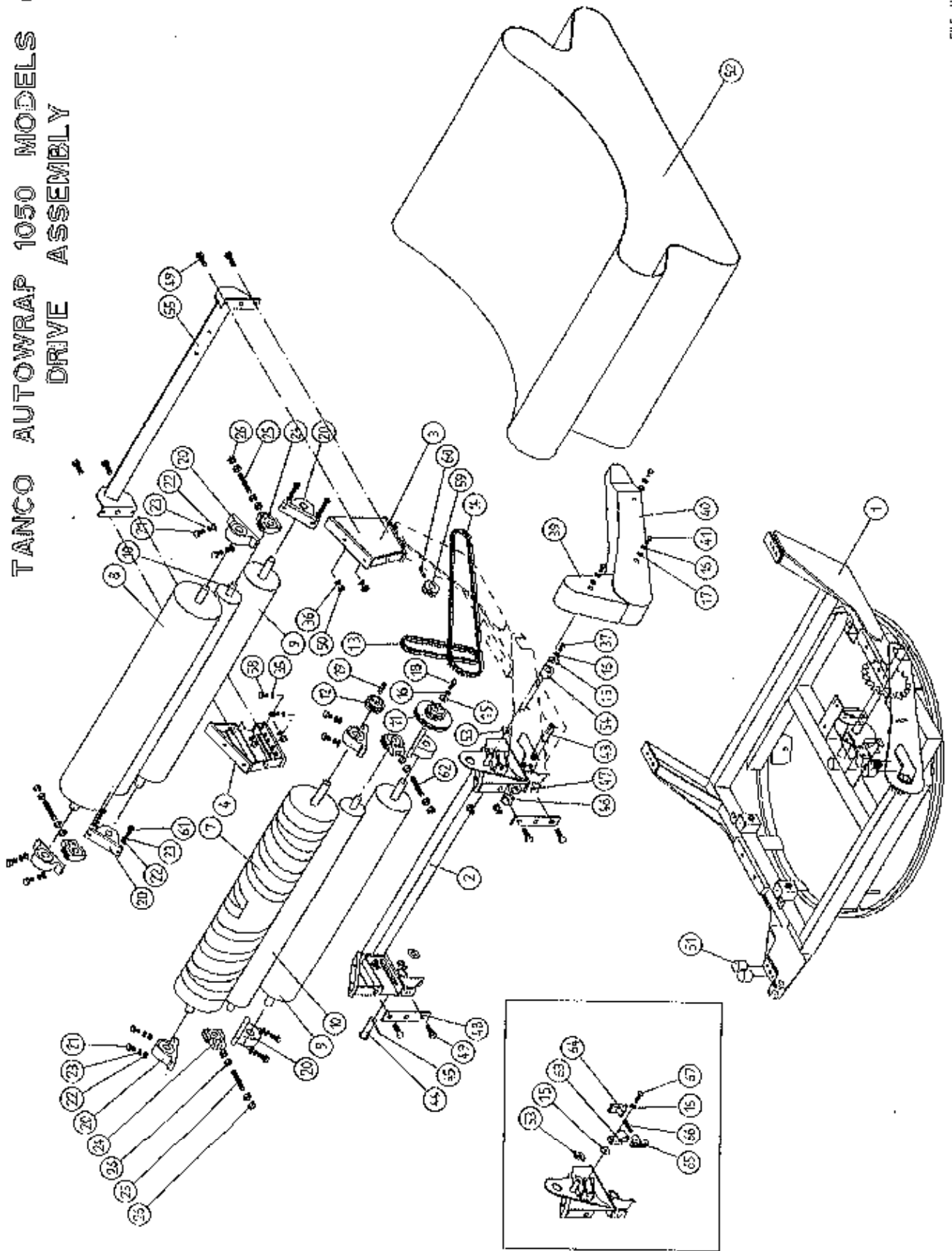
PARTS LIST

ITEM NO.	DESCRIPTION	QTY.	PART-NO.
1.	HYDRAULIC MOTOR MOUNTING ASSY.	1	WD65-HMB
2.	4" DIA X 1/2" PITCH TOOTHED PULLY	1	Z09-005-AW1
3.	TAPER LOCK BUSH TO SUIT 1" DIA SHAFT	1	Z09-005-AW2
4.	M10 STUDS X 15MM	2	Z28-01
5.	ROSTA TENSIONING UNIT ARM	1	Z06-454
6.	STEPPED ROLLER C/W BEARINGS	1	Z06-456
7.	SPACER	1	WD60-798
8.	M10 HEX HD BOLT X 60MM LONG	1	Z26-067B
9.	M10 LOCKNUT	1	Z23-10
10.	M12 HEX NUT	6	Z18-12
11.	12MM DIA SPRING WASHER	2	Z12-02-12
12.	M12 HEX HD SET X 30MM LONG	2	Z26-082S
13.	M10 HEX HD SET X 25MM LONG (TUFLOCK)	1	Z26-061S
14.	10MM DIA SPRING WASHER	1	Z12-02-10
15.	M12 HEX HD SET X 40MM LONG	6	Z26-084S
16.	HYDRAULIC MOTOR C.L.	1	Z01-02-AR75
17.	M12 SOCKET HD SCREW X 30MM LONG	2	Z13-6-12X30
18.	ROLLER C/W BEARINGS	1	Z06-457
19.	CIRCLIP	1	Z28-525

TANCO AUTOWRAP 1050 MODELSDRIVE ASSEMBLYPARTS LIST

ITEM NO.	DESCRIPTION	QTY	PART-NO.
1.	TURNTABLE ASSY.	1	WD610-TA
2.	ROLLER MOUNTING BRACKET (SWIVEL)	1	WD610-RMS
3.	ROLLER MOUNTING BRACKET (FIXED)	1	WD610-RM1
4.	ROLLER MOUNTING BRACKET (FIXED)	1	WD610-RM2
7.	BIG ROLLER ASSY (DRIVE)	1	WD610-DRA
8.	BIG ROLLER ASSY (IDLER)	1	WD610-BRI
9.	ROLLER ASSY (IDLER)	2	WD65-BRI
10.	TRACKING ROLLER ASSY (LONG)	2	WD610-TRL
11.	38 TOOTH x 19 TOOTH x 1/2" PITCH DOUBLE DUPLEX SPROCKET TO SUIT 08B-2 CHAIN	1	Z06-D610-1938
12.	19 TOOTH X 1/2" PITCH DUPLICATION SPROCKET TO SUIT 08B-2 CHAIN	1	Z06-D610-19
13.	CHAIN 08B-2 1/2" PITCH DUPLICATION X 63 PITCHES INCL. JOINER	1	Z09-AW-10
14.	CHAIN 08B-2 1/2" PITCH DUPLICATION X 156 PITCHES INCL. JOINER.	1	Z09-AW-20
15.	RETAINING COLLAR	2	WD623-071
16.	10mm DIA SPRING WASHER	6	Z12-02-10
17.	10mm DIA FLAT WASHER	5	Z10-02-10
18.	M10 HEX HD SET x 30mm LONG	1	Z26-062S
19.	5/16" KEY STEEL x 32mm LONG	1	WD623-K32
20.	1 1/4" PILLOW BLOCK BEARING	8	Z06-485
21.	M14 HEX HD SET x 45mm LONG	4	Z26-103S
22.	14mm DIA FLAT WASHER	24	Z11-02-14
23.	14mm DIA SPRING WASHER	24	Z12-02-14
24.	SLIDING BEARING STI	4	Z06-47ST
25.	M20 THREADED BAR x 135mm LONG	3	WD610-77
26.	M20 HEX NUTS	16	Z18-20
35.	12mm DIA. SPRING WASHER	12	Z12-02-12
36.	12mm DIA. FLAT WASHER	12	Z11-02-10
37.	M10 HEX HD BOLT x 60mm LONG	1	Z26-066B
38.	M10 HEX HD BOLT x 80mm LONG	1	Z26-069TB
39.	CHAIN GUARD (SMALL)	1	WD610-CGS
40.	CHAIN GUARD (LARGE)	1	WD610-CGL
41.	M10 HEX HD SET X 25MM LONG (TUFLOCK)	3	Z26-061S
43.	SPROCKET/BRACKET PIVOT SHAFT	1	WD610-71
44.	SWIVEL BRACKET PIVOT PIN J-50	1	Z03-03-50
45.	2" X 1/4" SPLIT PIN	1	Z03-21-29
46.	1" DIA UNC LOCKNUT	1	Z23-251
47.	1" H/D FLAT WASHER	2	Z10-02-25
48.	RETAINING PLATE	2	WD610-30
49.	M12 HEX HD SETS X 35MM	8	Z26-083S
50.	M12 HEX NUTS	10	Z18-12
51.	BUFFER 50MM DIA X 42MM LONG	4	Z40-235
52.	BALE BELT 1130MM WIDE X 4470MM LONG	1	Z05-02AWV1-93
53.	LOCKING PLATE	2	WD623-060

TANCO AUTOWRAP 1050 MODELS (1994)
DRIVE ASSEMBLY



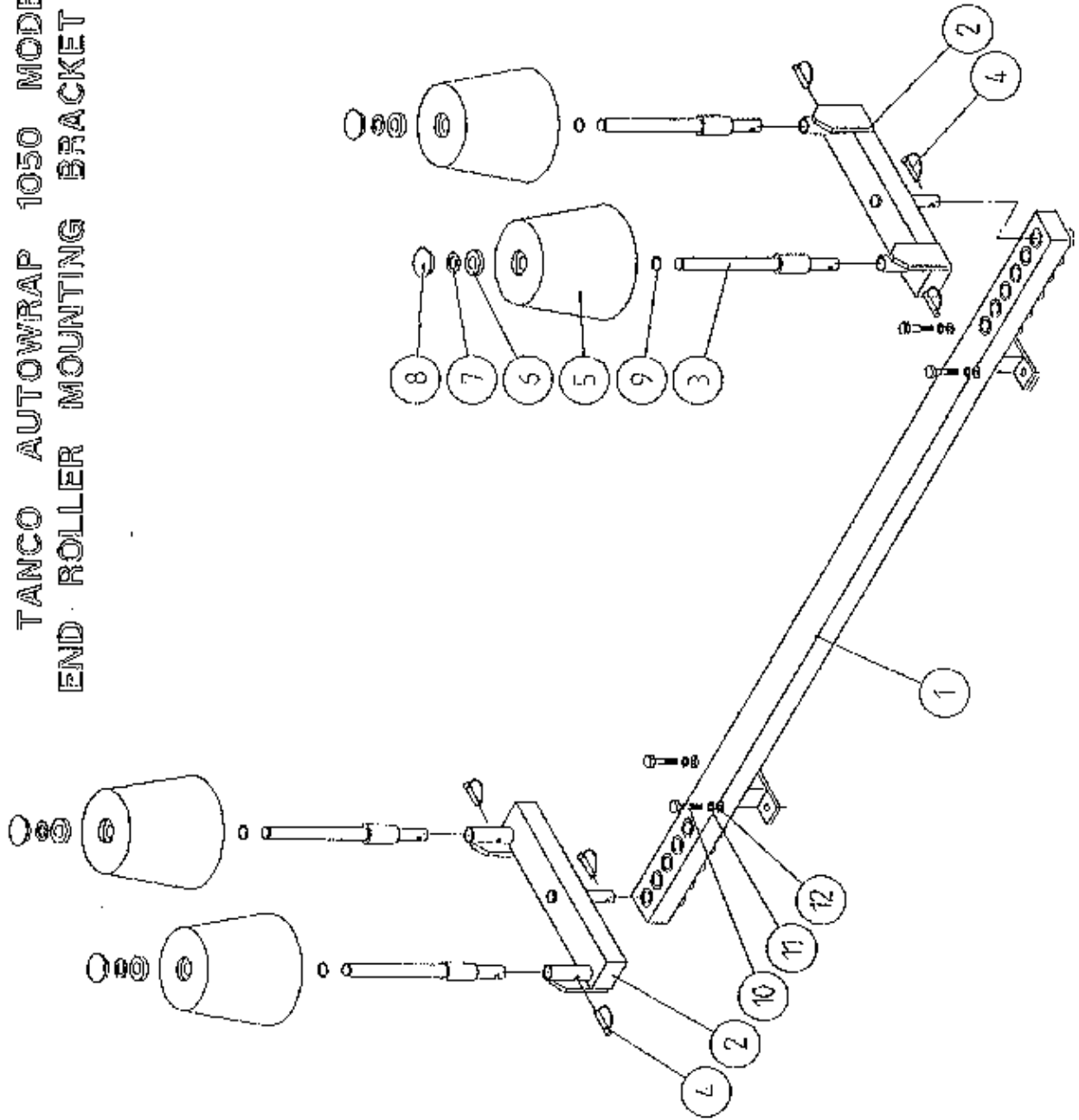
TANCO AUTOWRAP 1050 MODELS

DRIVE ASSEMBLY

PARTS LIST

54.	CHAIN TENSIONER ROLLER	1	WD65-CT
55.	CUT AND START MOUNTING FRAME	1	WD610-CSM
57.	M14 HEX NUTS	8	Z18-14
58.	M12 HEX HD SETS X 25MM LONG	4	Z26-081S
59.	15 TOOTH X 1/2" PITCH DUPLEX SPROCKET	1	Z06-AW125
60.	5/6" DIA X 45MM LONG TENSION PIN	1	Z03-20-022
61.	M14 HEX HD SET X 50MM LONG	14	Z26-104S
62.	M20 THREADED BAR x 105 mm LONG	1	WD610-113
63.	CHAIN TENSIONER BODY	1	WD610-CT
64.	CHAIN TENSIONER BLOCK ASSY INNER	1	WD610-TB1
65.	CHAIN TENSIONER BLOCK ASSY OUTER	1	WD610-TBO
66.	SPRING 14.5MM O.D. X 1.6MM WIRE X 60MM LONG	1	Z07-48
67.	M10 HEX HD SET X 40MM LONG	1	Z26-064S

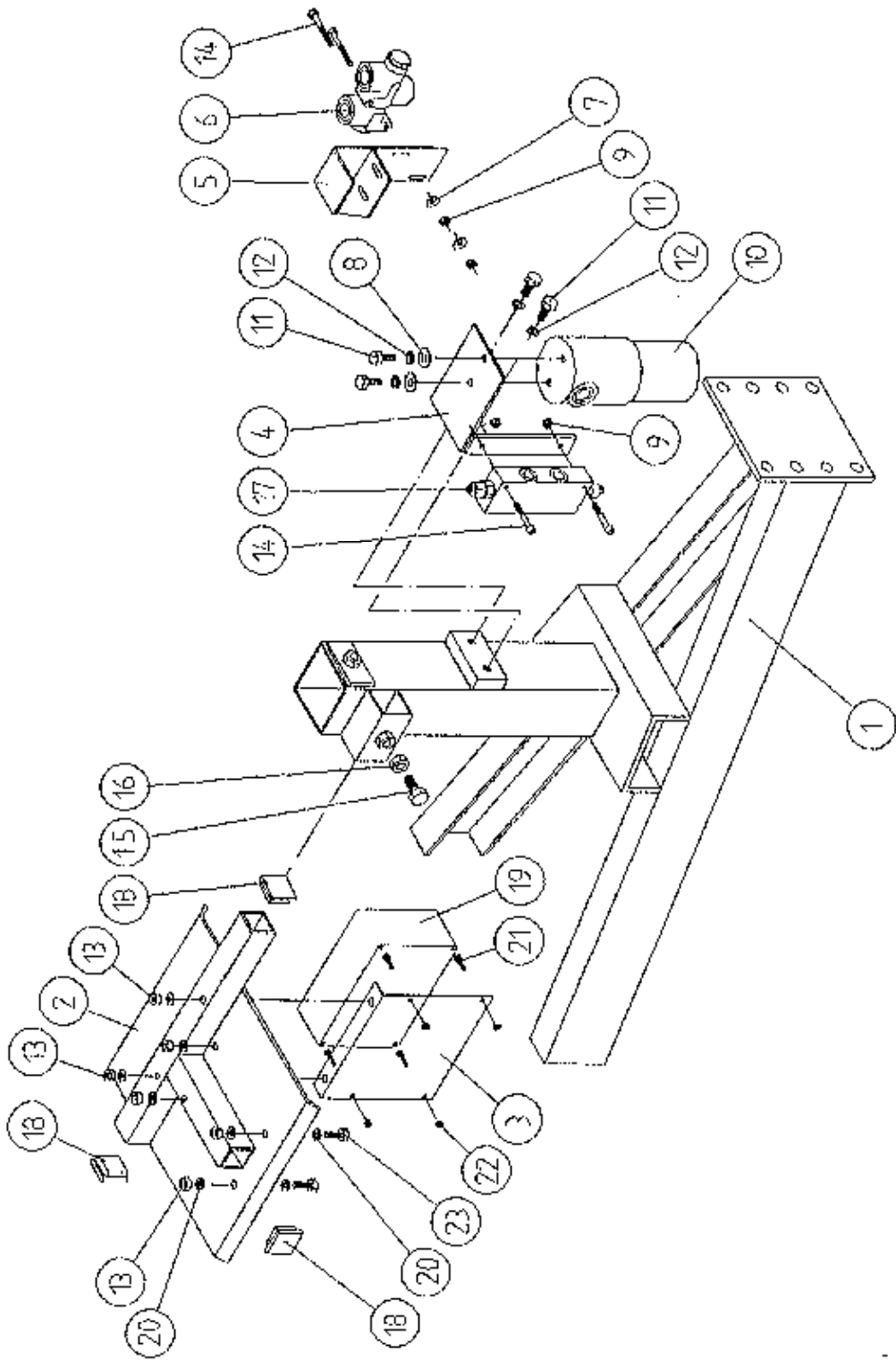
TANCO AUTOWRAP 1050 MODELS
 END ROLLER MOUNTING BRACKET ASSY.



TANCO AUTOWRAP 1050 MODELS
END ROLLER MOUNTING BRACKET ASSY
PARTS LIST

ITEM NO	DESCRIPTION	QTY	PART-NO.
1.	CROSS BEAM ASSY	1	WD610-CBA
2.	END ROLLER MOUNTING BRACKET	2	WD610-RMB
3.	END ROLLER SHAFT ASSY	4	WD610-RSA
4.	10mm DIA "D" LINCH PIN	6	Z38-03
5.	SIDE ROLLER	4	Z06-AWR
6.	BEARING 25mm I.D.	4	Z06-AWRB-93
7.	THRUST WASHER	4	WD60-292
8.	PLASTIC CAP	4	Z06-AWRC
9.	CIRCLIP	4	Z28-525
10.	M12 HEX HD SET x 30mm LONG	4	Z26-082S
11.	12mm DIA SPRING WASHER	4	Z12-02-12
12.	12mm DIA FLAT WASHER	4	Z11-02-10

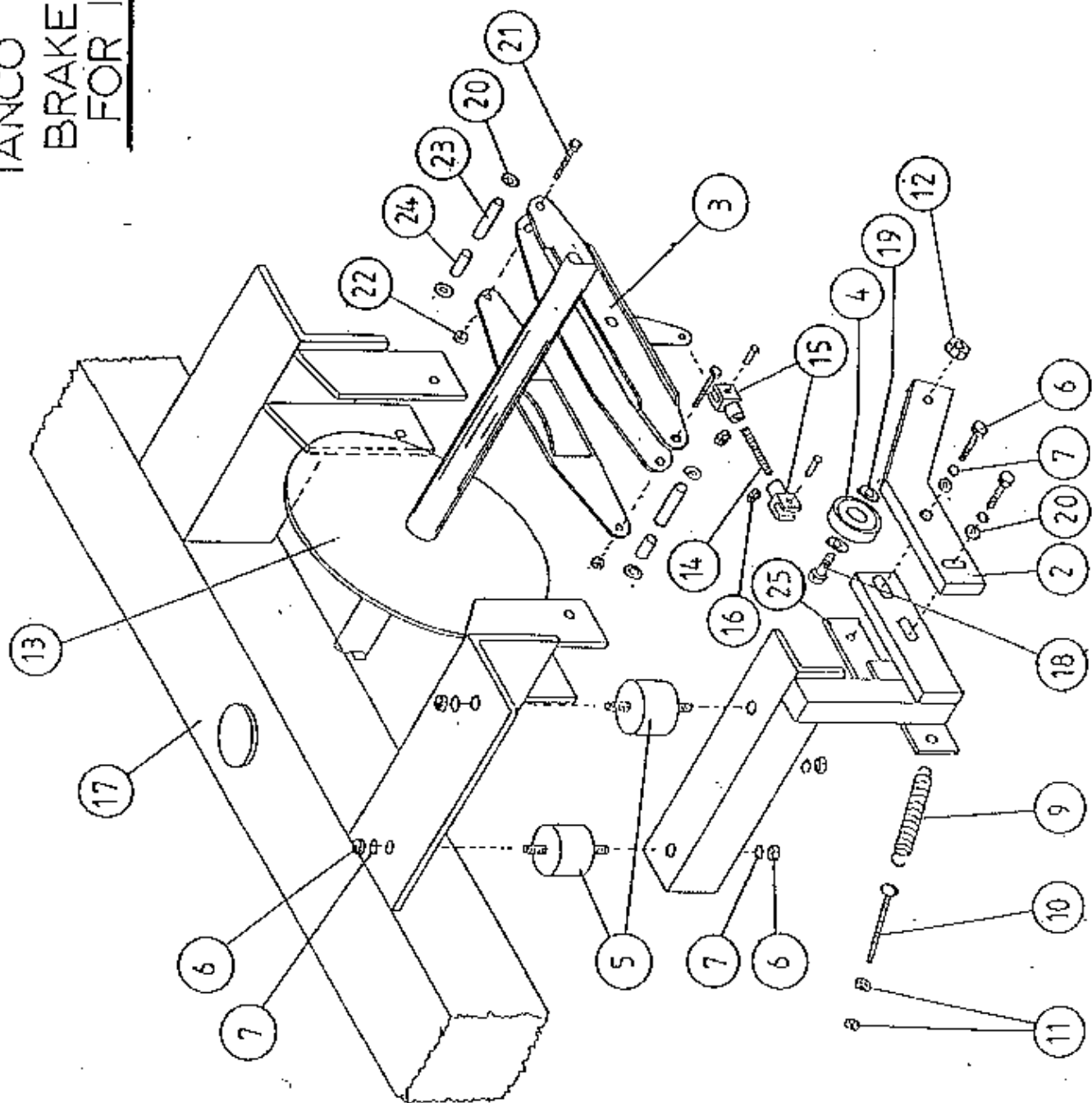
TANCO AUTOWRAP 1050 A MODEL (1994)
 VALVE/JUNCTION BOX / FILTER & DIVERTER VALVE MOUNTING BRACKETS ASSY



TANCO AUTOWRAP 1050A MODEL (1994)VALVE/JUNCTION BOX/FILTER & DIVERter VALVE MOUNTING
BRACKET ASSEMBLY
PARTS LIST

ITEM NO	DESCRIPTION	QTY	PART-NO.
1.	CHASSIS ASSY	1	
2.	3 BANK VALVE MOUNTING BRACKET ASSY	1	WD610-VMP
3.	JUNCTION BOX MOUNTING PLATE	1	WD612-04
4.	OIL FILTER/OVER-CENTRE-VALVE MOUNTING BRACKET	1	WD610-FVB
5.	FLOW DIVIDER MOUNTING BRACKET	1	WD65-FDM
6.	FLOW DIVIDER	1	Z01-03-10-A6
7.	6MM DIA MUD FLAP WASHER	2	Z11-02-061
8.	8MM DIA MUD FLAP WASEHR	2	Z11-02-081
9.	M6 LOCKNUT (NYLOCK)	4	Z23-06
10.	OIL FILTER	1	Z01-24-08
11.	M8 HEX HD SET x 25mm	4	Z26-040S
12.	8MM DIA SPRING WASHER	4	Z12-02-08
13.	M8 LOCKNUTS	6	Z23-08
14.	M6 ALLEN HD SOCKET SCREW x 50mm	4	Z13-020-50
15.	M12 HEX HD SET x 30MM	1	Z26-082S
16.	M12 HEX NUT	1	Z18-12
17.	OVER-CENTRE VALVE	1	Z01-03-10-A8
18.	PLASTIC CAP TO SUIT 40 x 40 RHS	3	Z40-07
19.	JUNCTION BOX	1	ZDC-JB2
20.	8MM DIA FLAT WASHER	12	Z10-02-06
21.	M4 ALLEN HD SOCKET SCREW x 16mm	4	Z26-002
22.	M4 LOCKNUT	4	Z23-04
23.	M8 HEX HD SET x 20mm	6	Z26-039S

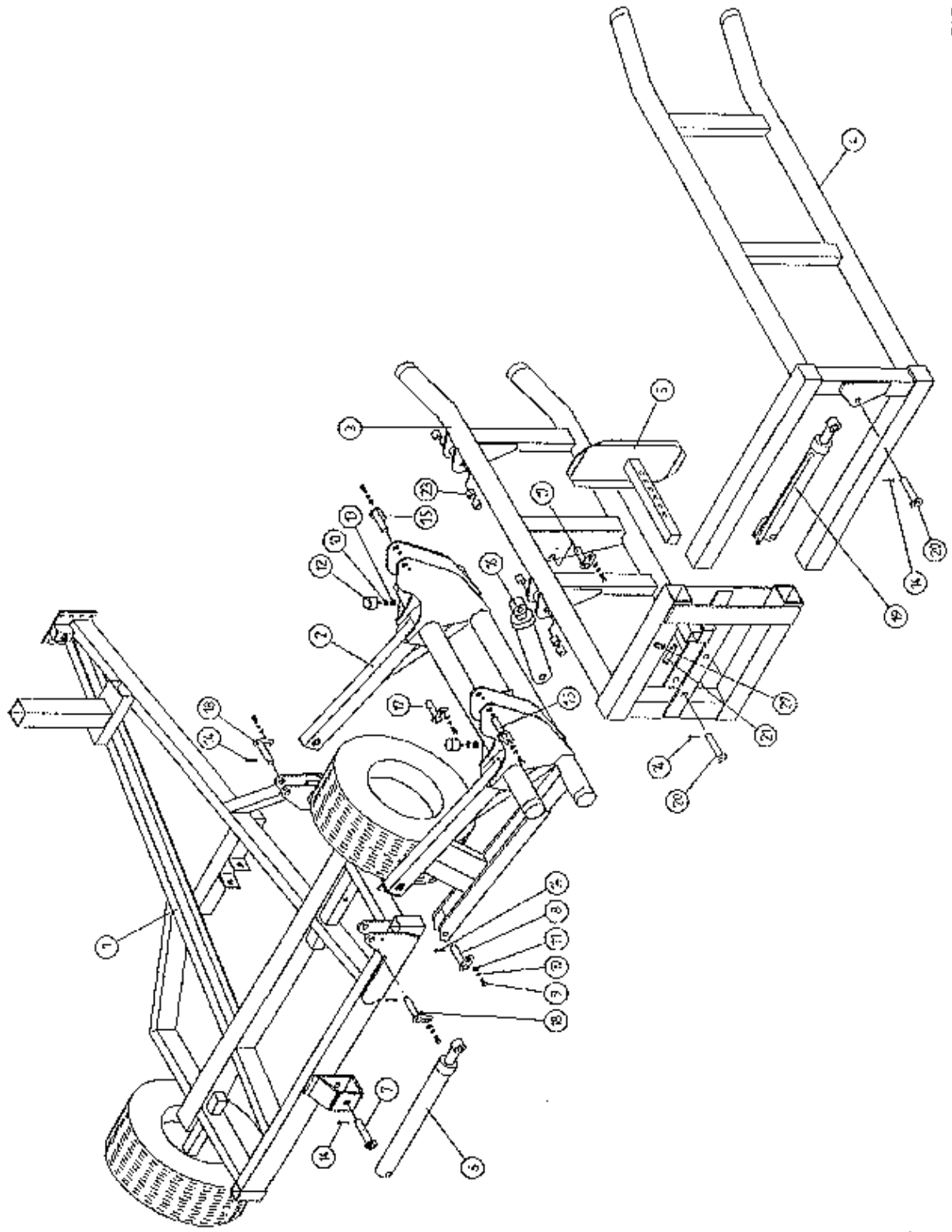
TANCO AUTOWRAP 1994
BRAKE ARRANGEMENT
FOR INDEXING SHAFT



**TANCO AUTOWRAP 1994
BRAKE ARRANGEMENT FOR INDEXING SHAFT
PARTS LIST**

ITEM NO	DESCRIPTION	QTY	PART-NO
1.	CAM FOLLOWER MOUNTING BRACKET (UPPER)	1	WD60-CFMB
2.	CAM FOLLOWER MOUNTING BRACKET (LOWER)	1	WD60-804
3.	CALIPER DISC BRAKE UNIT	1	Z49-92
4.	BALL BEARING (6301)	1	Z49-92
5.	RUBBER BUFFER 50MM DIA X 30 LONG TYPE A	2	Z40-21
6.	M10 HEX NUTS	4	Z18-10
7.	10MM DIA SPRING WASHERS	6	Z12-02-10
8.	M10 HEX HD SET X 40 LONG	2	Z26-064S
9.	TENSION SPRING	1	Z07-05
10.	EYE BOLT (M8)	1	WD60-EB
11.	M8 HEX NUTS	2	Z18-08
12.	M12 LOCKNUT	1	Z23-12
13.	SPROCKET/SHAFT ASSY	1	WD65-SPR
14.	5/16" UNF THREADED BAR X 90MM LONG	1	WD60-806
15.	5/16" UNF CLEVIS C/W PIN & CLIP	2	Z49-33
16.	5/16" UNF HEX NUT	2	Z15-05
17.	TURN TABLE	1	WD60-TA
18.	M12 HEX HD SETS X 40MM LONG	1	Z26-084S
19.	12MM DIA FLAT WASHER	2	Z11-02-12
20.	10MM DIA FLAT WASHER	7	Z11-02-10
21.	3/8" UNF HEX HD SET X 3" LONG	2	Z31B-102
22.	3/8" UN FLOCK NUT	2	Z15-06
23.	SPACER 1/2" O.D. X 13/32 I.D. X 1 1/2" LONG	2	Z49-92-01
24.	SPACER 1/2" O.D. X 13/32" I.D. X 1/2" LONG	2	Z49-92-02
25.	CLAMPING PLATE		WD60-836

TANCO AUTOWRAP 1050S/1050A MODEL
TWINPAK LIFT ARM ASSEMBLY

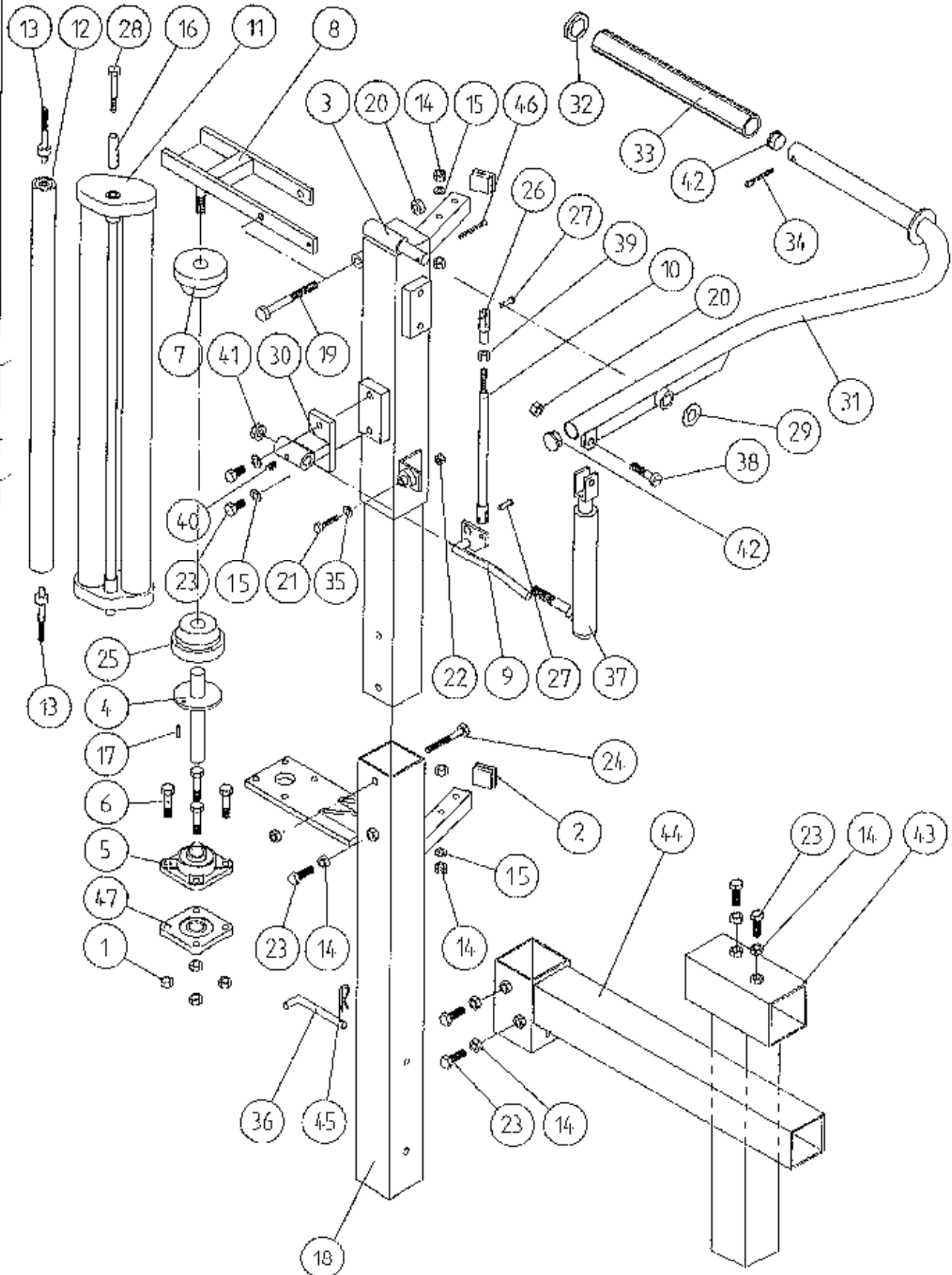


WD610-LAS

TANCO AUTOWRAP 1050S/1050A MODELS 1994
 "TWIN-PAK" LIFT ARM ASSY
 PARTS LIST

ITEM NO.	DESCRIPTION	QTY	PART-NO
1.	CHASSIS ASSY	1	WD60-CHA
2.	MAIN ARM ASSY	1	WD610-TNA
3.	INNER FRAME ASSY	1	WD610-TIA
4.	OUTER FRAME ASSY	1	WD610-TOA
5.	BALE STOP ASSY	1	WD610-LAS1
6.	HYDRAULIC RAM (MAIN ARM)	1	Z01-01-AWG12
7.	RAM BOTTOM PIVOT PIN	1	Z03-02-330
8.	RAM TOP PIVOT PIN	1	Z03-01-797
9.	M10 HEX HD SET x 20mm LONG	7	Z26-060ST
10.	10mm DIA SPRING WASHER	9	Z12-02-10
11.	10mm DIA FLAT WASHER	7	Z11-02-10
12.	BUFFER 50mm DIA x 40mm LONG	2	Z40-20
13.	M10 HEX NUT	2	Z18-10
14.	1/4" DIA SPLIT PIN x 2" LONG	7	Z03-21-29
15.	INNER FRAME PIVOT PIN	2	Z03-02-192
16.	HYDRAULIC RAM (INNER FRAME)	1	Z01-01-DA980
17.	RAM TOP/BOTTOM PIVOT PIN	2	Z03-01-796
18.	MAIN FRAME PIVOT PIN C/W GREASE NIPPLE	2	Z03-01-905
19.	HYDRAULIC RAM (OUTER FRAME)	1	Z01-01-140S
20.	RAM TOP/BOTTOM PIVOT PIN	2	Z03-02-54
21.	BALE STOP RETAINING PIN	1	Z03-04-73
22.	7/16" DIA LINCH PIN	1	Z03-22-06
23.	TENSION BUSH 1 1/4" x 1" x 30mm LONG	6	Z03-20-014

TANCO AUTOWRAP 1050A MODEL 1994 FILM DISPENSER SYSTEM

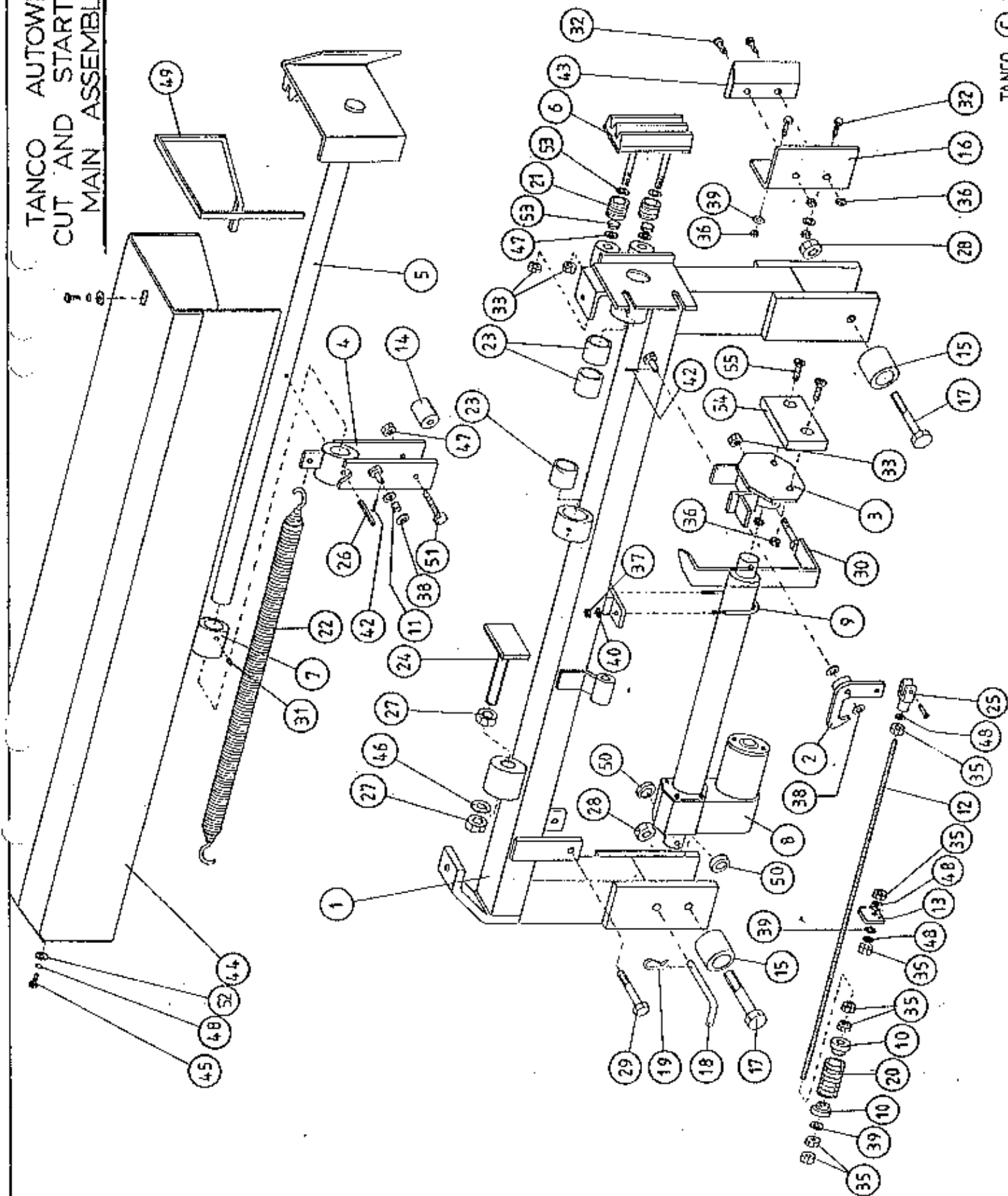


FILE NAME WD 625 - PL8

TANCO AUTOWRAP 1050A MODEL (TRAILED) 1994
FILM DISPENSING SYSTEM
PARTS LIST

ITEM NO	DESCRIPTION	QTY.	PART-NO.
1	M10 LOCKNUTS	4	Z23-10
2	PLASTIC CAPS (TO SUIT 40 X 40 X 3 RHS)	2	Z32-07
3	DISPENSER MOUNTING (UPPER)	1	WD60-DMUH
4	FILM SPOOL ASSEMBLY	1	WD60-SPO
5	1" DIA FLANGE BEARING C/W CAM LOCK	1	Z06-48EC
6	M10 HEX HD. BOLT X 50MM LONG	4	Z26-066B
7	CONE (TOP) C/W BALL BEARINGS	1	Z06-45-01
8	CLAMP ASSEMBLY	1	WD60-DMCA
9	LEVER ASSEMBLY	1	WD60-DMLA
10	LINK ASSEMBLY	1	WD60-DMLK
11	FILM DISPENSER UNIT MK 8 (55% STRETCH)	1	D6151
12	SLAVE ROLLER ASSY (PLASTIC COATED)	1	WD65-SLR
13	SLAVE ROLLER PIVOT	2	WD60-253
14	M12 HEX NUTS	9	Z18-12
15	12MM DIA SPRING WASHER	2	Z12-02-12
16	SLEVE	1	D52012
17	1/4" DIA TENSION PIN X 3/4" LONG	1	Z03-20-062
18	DISPENSER MOUNTING (LOWER)	1	WD60-DMLH
19	M12 HEX HD BOLT X 130MM LONG	1	Z26-094B
20	M12 LOCKNUT	3	Z23-12
21	M8 HEX HD BOLT X 35MM LONG	1	Z26-042S
22	M8 LOCKNUT	1	Z23-08
23	M12 HEX HD SET X 30MM LONG	7	Z26-082S
24	M12 HEX HD BOLT X 100MM LONG	1	Z26-092B
25	CONE (BOTTOM)	1	Z06-45-02
26	CLEVIS (M10)	1	Z49-335
27	PIN (5/16" DIA C/W CLIP	2	Z49-337
28	M10 HEX HD BOLT X 80MM LONG	1	Z26-0691B
29	3/4" DIA FLAT WASHER	1	Z10-02-19
30	FILM PULL DOWN BRACKET ASSY	1	WD65-FPDB
31	FILM PULL DOWN ARM ASSY	1	WD65-FPDA
32	RETAINING WASHER	1	WD60-859
33	ROLLER	1	WD60-866
34	2" X 1/4" SPLIT PIN	1	Z03-21-29
35	8mm DIA MUD FLAP WASHER	1	Z11-02-081
36	BISSEL PIN (110MM LONG)	1	WD60-874
37	HYDRAULIC RAM	1	Z01-01-AW25
38	M12 HEX HD. SET X 50MM LONG	1	Z26-086S
39	5/16" UNF HEX NUT	1	Z15-05
40	1/8 BSP ST. GREASE NIPPLE	1	Z39-60
41	M16 LOCKNUT	1	Z23-16
42	1" GB PLASTIC CAP	2	Z32-14
43	DISPENSER MAST HORIZONTAL SOCKET ASSY.	1	WD65-DHS
44	DISPENSER MAST VERTICAL SOCKET ASSY.	1	WD65-DVS
45	4mm "R" CLIP	1	Z36-02
46	1 1/2" x 3/16" DIA SPLIT PIN	1	Z03-20-05
47	1" DIA FLANGE BEARING	1	Z06-48

TANCO AUTOWRAP
CUT AND START UNIT (199%)
MAIN ASSEMBLY

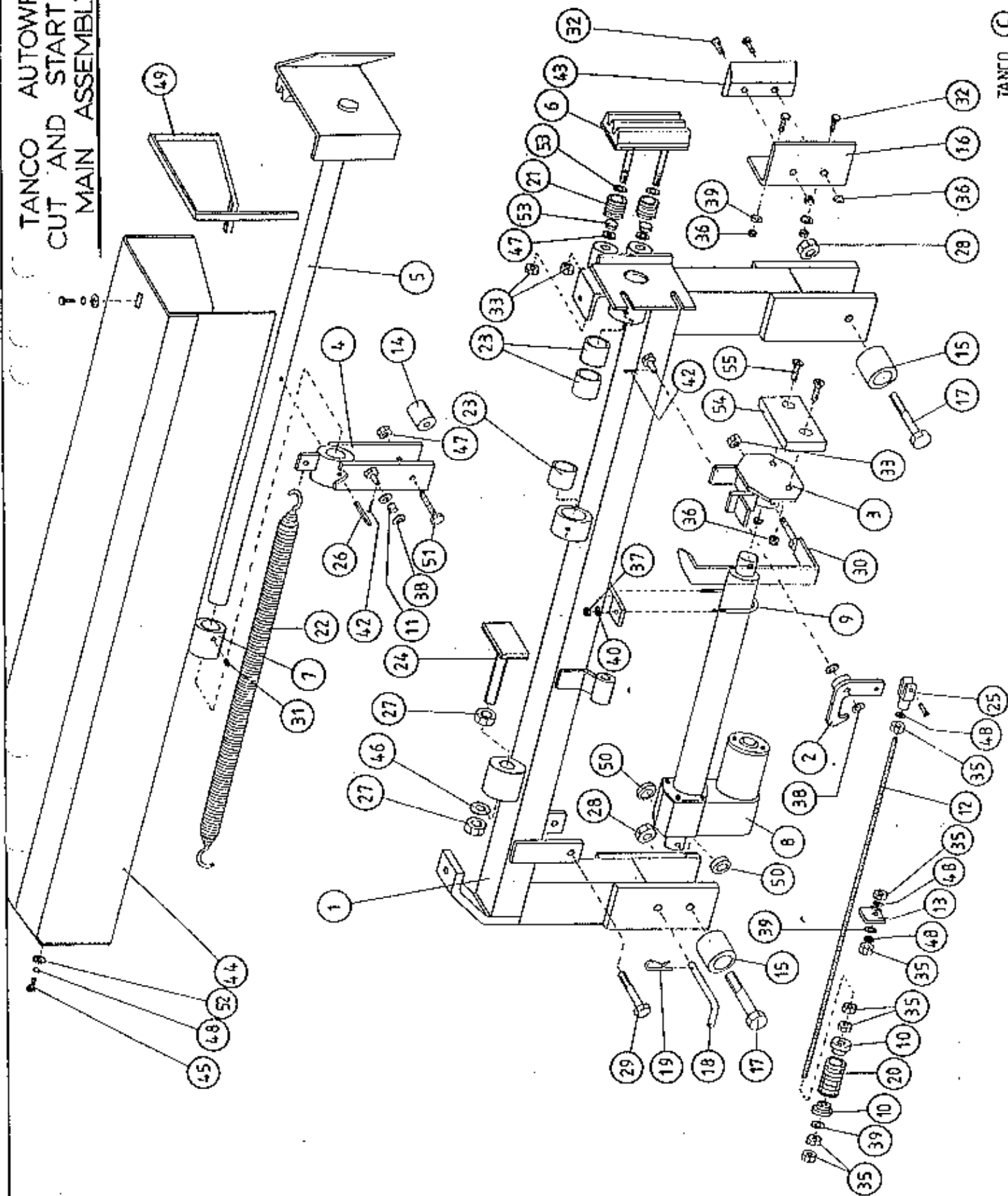


AUTOWRAP

TANCO AUTOWRAP
CUT AND START UNIT (1994)
PARTS LIST

ITEM NO	DESCRIPTION	QTY	PART-NO.
1.	MAIN MOUNTING FRAME ASSY	1	WD605-MT
2.	LATCH ASSY.	1	WD605-LA
3.	PUSH PLATE ASSY.	1	WD605-PP
4.	GUIDE ASSY	1	WD605-GD
5.	PLUNGER ASSY	1	WD605-PL
6.	FILM GRIPPER ASSY	1	WD605-FG
7.	PLUNGER END CAP	1	WD605-90
8.	WARNER LINEAR ACTUATOR D11 10B5 08	1	ZD605-510
9.	"U" BOLT	1	WD605-45
10.	STEPPED COLLAR	2	WD605-46
11.	SLEEVE 1/2" DIA O.D. X 13/32" DIA I.D.	1	WD605-47
12.	THREADED ROUND 5/16" UNF	1	WD605-48
13.	TRIGGER	1	WD605-50
14.	COLLAR 1" DIA BRIGHT RD. X 41.5MM LONG	1	WD605-51
15.	SPACER	1	WD605-100
16.	BLADE GUARD/MOUNTING BRACKET	1	WD605-105
17.	M12 HEX HD BOLT X 80MM LONG	2	Z26-0901B
18.	BISSEL PIN	1	Z03-22-AW100
19.	4MM "R" CLIP	1	Z36-02
20.	SPRING 16MM O.D. X 1.5MM WIRE X 48MM LONG	1	Z07-34
21.	SPRING 1.09" O.D. X 0.092" WIRE X 1.54" LONG	2	Z07-44
22.	SPRING 1.125 O.D. X 0.125" WIRE X 330MM	1	Z07-46
23.	OILITE OIL RETAINING BUSH 1 1/8" O.D. X 3/4" X 1" L.	3	Z06-105
24.	RUBBER BUFFER ASSY.	1	WD605-BA
25.	CLEVIS C/W PIN	1	Z49-33
26.	1 1/2" X 1/4" DIA TENSION PIN	1	Z03-20-07
27.	M16 HEX NUTS	2	Z18-16
28.	M12 LOCKNUTS	2	Z23-12
29.	M12 HEX HD BOLT X 65MM	1	Z26-0882B
30.	INDICATOR ASSY	1	WD605-PR
31.	M8 GRUB SCREW	1	Z28-008
32.	M8 HEX HD SET X 25MM	4	Z26-040S
33.	M12 BINX LOCKNUT	4	Z23-12BX
35.	5/16" UNF HEX NUT	7	Z15-05
36.	M8 LOCKNUT	9	Z18-08
37.	M6 LOCKNUT (NYLOCK)	2	Z23-06
38.	10MM DIA FLAT WASHER	10	Z11-02-10
39.	8MM DIA FLAT WASHER	5	Z11-02-08
40.	6MM DIA FLAT WASHER	2	Z11-02-06
42.	3MM DIA SPLIT PIN	2	Z03-21-02
43.	BLADE	1	WD605-104
44.	MAIN GUARD	1	WD605-MG
45.	M8 HEX HD SET X 20MM LONG	2	Z26-039S
46.	10MM DIA SPRING WASHER	2	Z12-02-10
47.	12MM DIA FLAT WASHER	2	Z11-02-12
48.	8M DIA SPRING WASHER	9	Z12-02-08
49.	EDGING STRIP	1	Z44-12
50.	SPACER 1" O.D. X 1/2" I.D. X 6MM LONG	2	WD605-65

TANCO AUTOWRAP
 CUT AND START UNIT (1994)
 MAIN ASSEMBLY

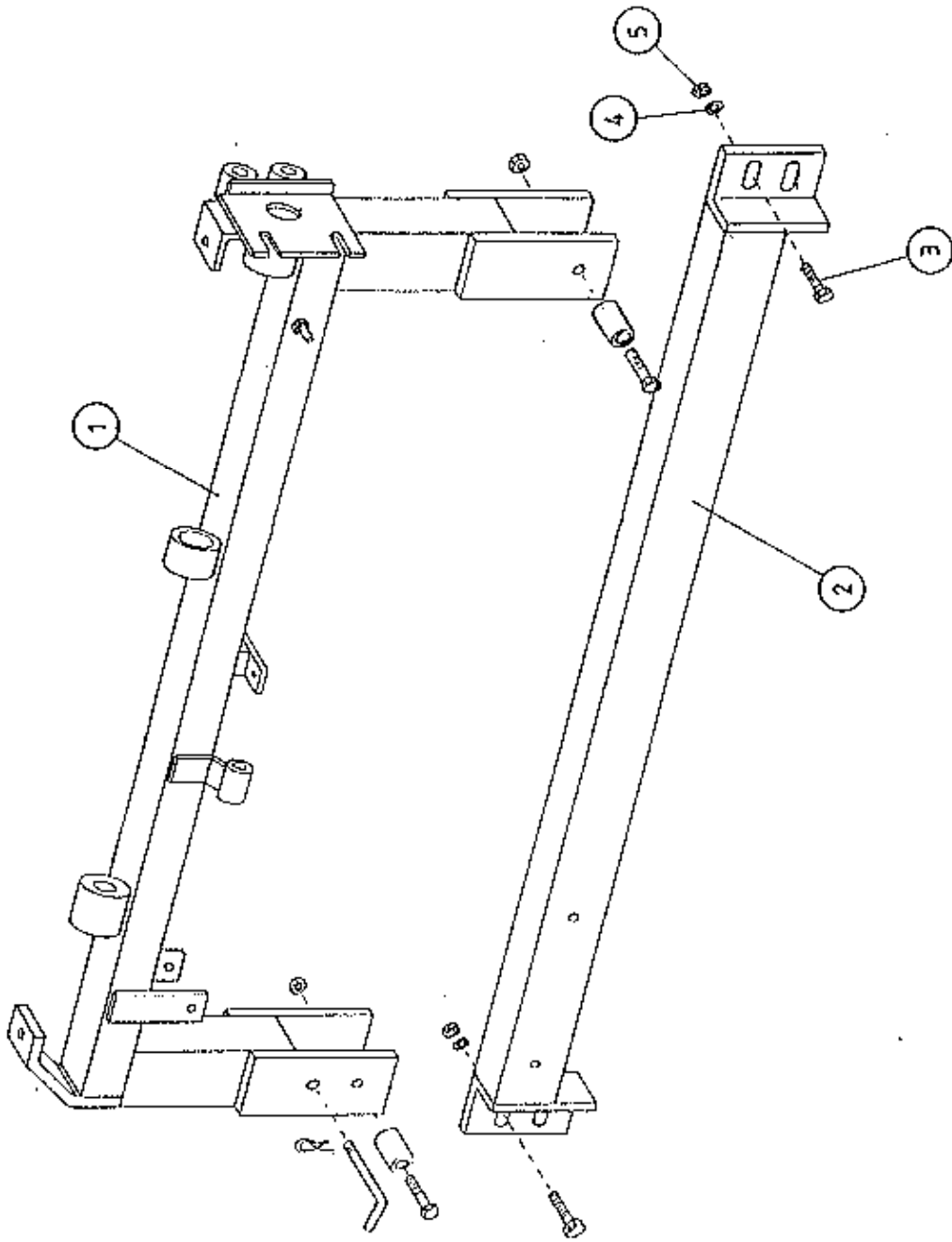


AUTOWRAP

**TANCO AUTOWRAP
CUT AND START UNIT (199)
PARTS LIST**

ITEM NO	DESCRIPTION	QTY	PART-NO.
51.	M10 HEX HDSET X 20MM	2	Z26-060S
52.	8MM DIA FLAT WASHER 1" O.D.	4	Z11-02-081
53.	25MM O.D. X 12MM I.D. FILM GRIP WASHER	4	Z11-02-12FG
54.	PACKER	1	WD605-133
55.	H8 X 40 COUNTER SUNK BOLT	2	Z13-5-08X40

TANCO AUTOWRAP CUT AND START
MOUNTING FRAME



WD605-MF

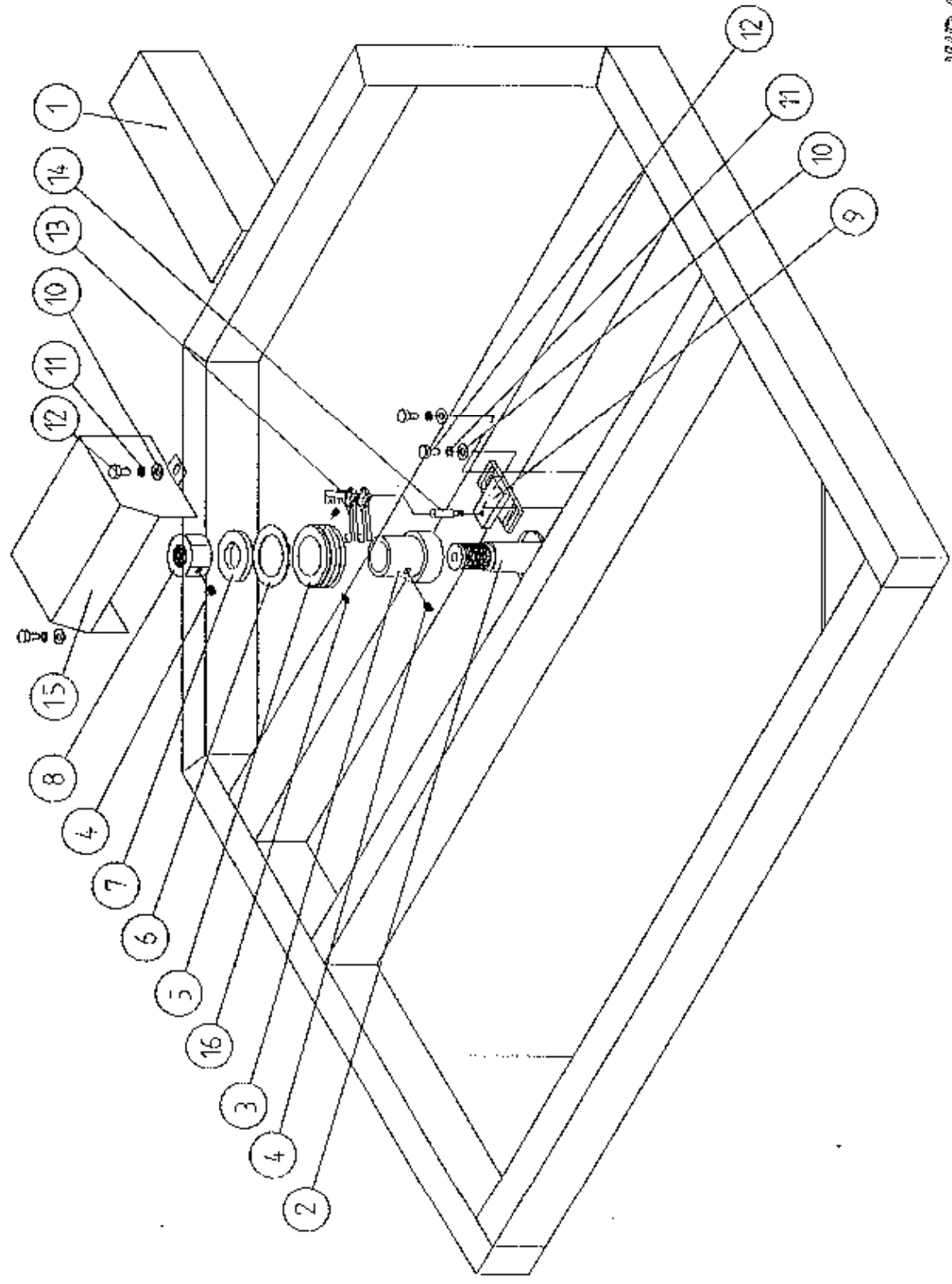
TANCO AUTOWRAP CUT AND START UNIT (1994)

MOUNTING FRAME

PARTS LIST

ITEM NO	DESCRIPTION	QTY	PART-NO
1.	MAIN MOUNTING FRAME ASSY	1	WD605-MF
2.	MAIN FRAME MOUNTING	1	WD605-MFM
3.	M10 HEX HD SET x 30mm LONG	2	Z26-062S
4.	10mm DIA SPRING WASHER	2	Z12-02-10
5.	M10 HEX NUT	2	Z18-10

TANCO AUTOWRAP - CUT AND START UNIT (1994)
SLIP RING ASSEMBLY



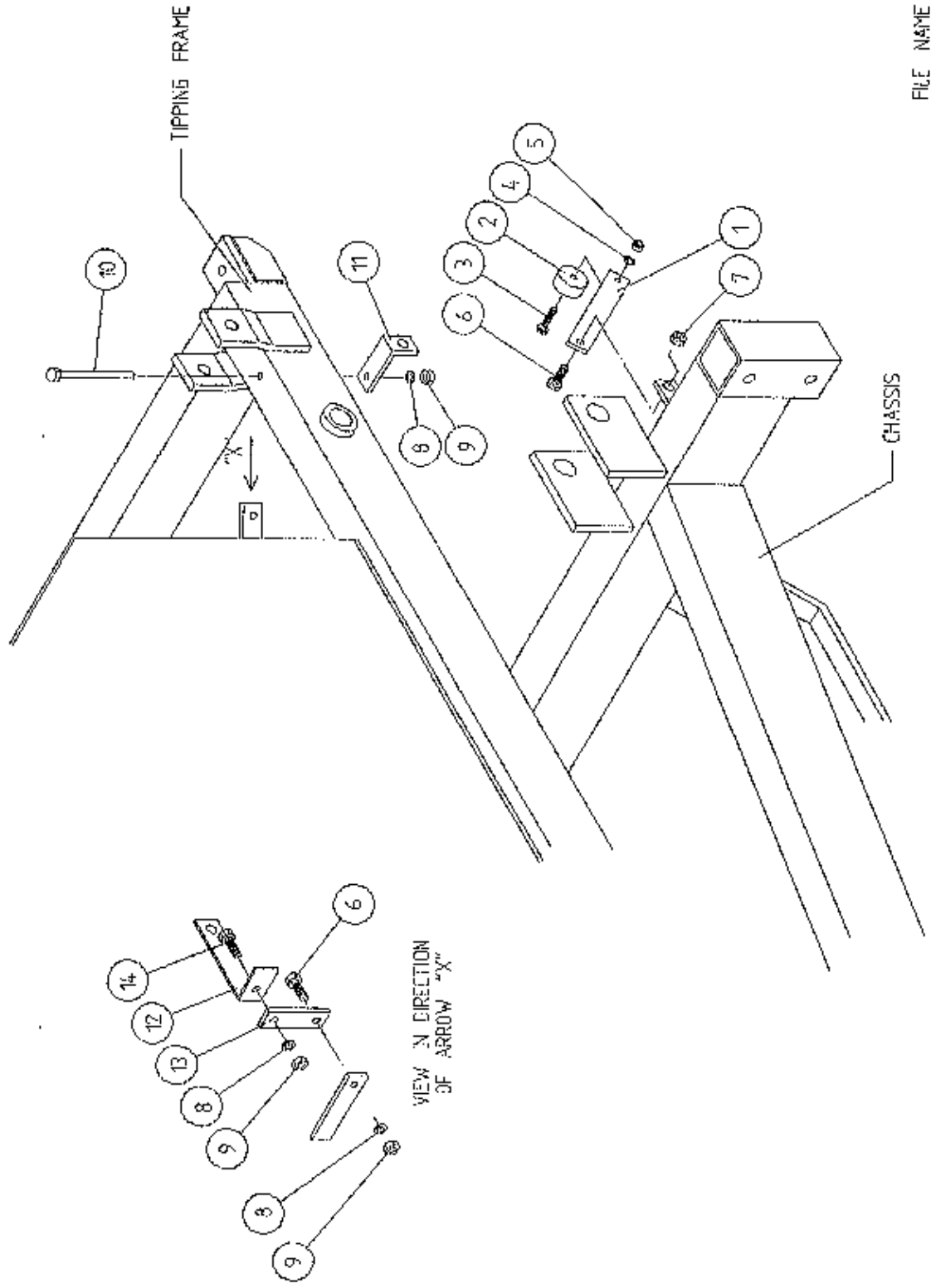
WD 605 - PL2

TANCO AUTOWRAP CUT AND START UNIT (1994)
SLIP RING ASSY.

PARTS LIST

<u>ITEM NO.</u>	<u>DESCRIPTION</u>	<u>QTY.</u>	<u>PART-NO.</u>
1.	UNDERSIDE OF TIPPING FRAME	1	
2.	TURNTABLE CENTRE SHAFT	1	WD60-768
3.	SLIP RING MOUNTING SLEEVE	1	WD60-825
4.	M8 GRUB SCREW x 6 mm LONG	2	Z28-007
5.	SLIP RING ASSY.	1	ZD605-308
6.	INSULATING RING	1	ZD605-350
7.	LOCKING COLLAR	1	WD60-770
8.	1 1/4" UNC HEX NUT	1	Z18-300
9.	SLIP RING MOUNTING BRACKET ASSY	1	WD605-SRMB
10.	10mm DIA FLAT WASHER 1" O.D.	4	Z11-02-101
11.	10mm SPRING WASHER	4	Z12-02-10
12.	M10 HEX HD SET x 20mm	4	Z26-060S
13.	BRUSHES	2	ZD605-306
14.	INSULATOR SLEEVE	1	ZD605-302
15.	SLIP RING GUARD ASSY	1	WD605-SRG
16.	M5 GRUB SCREW	2	Z28-005

TANCO AUTOWRAP
 CUT AND START UNIT
 SENSOR & MAGNET MOUNTING BRACKETS



TANCO AUTOWRAP 1050A MODEL (1994)
 "TWIN-PAK" HYDRAULIC COMPONENTS

