



S100 A QUICK REFERENCE GUIDE

The quick reference guide is not a substitute for the Operators Manual!
Please refer to Operators Manual for more detailed information

TRACTOR CONNECTION

1. Hydraulics

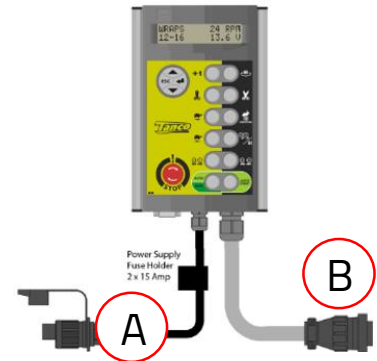
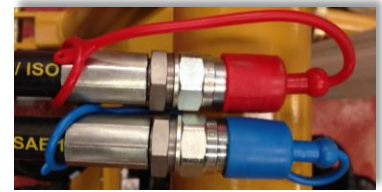
Red pipe > Supply (35-40lpm)

Blue pipe > Return (**Free flow return!!**)

2. Electrics

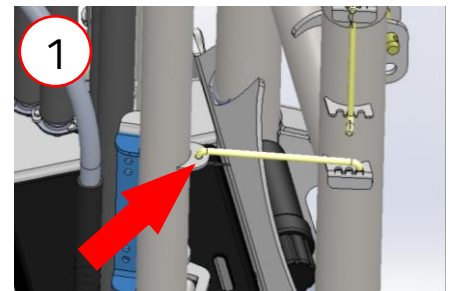
A. Connect 12V supply to 3pin plug

B. Connect wrapper harness to controller

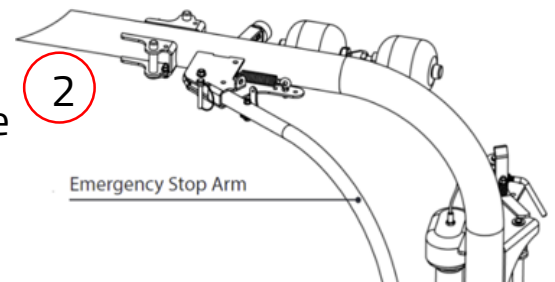


ENTERING THE WORKING POSITION

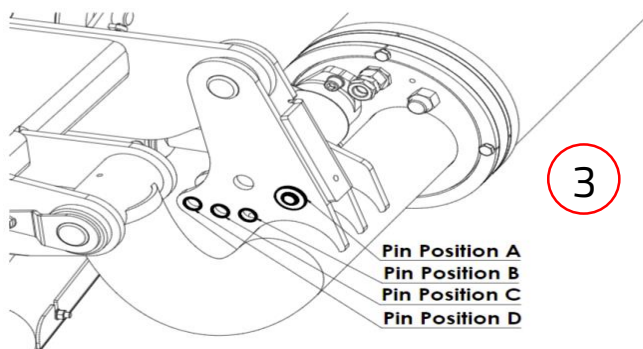
1. Remove the wrap arm transport lock.



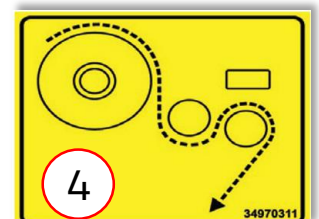
2. Position the safety arms into the working position by removing the retaining pin.



3. Adjust the load arm stop pin to allow clearance between the top of the bale at the rotating arm.



4. Install the roll of film and attach the film to the Cut & Start.





OPERATION

Auto mode (A)

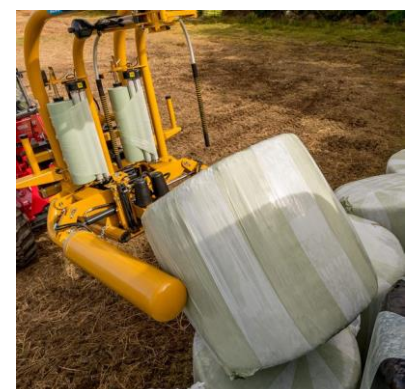
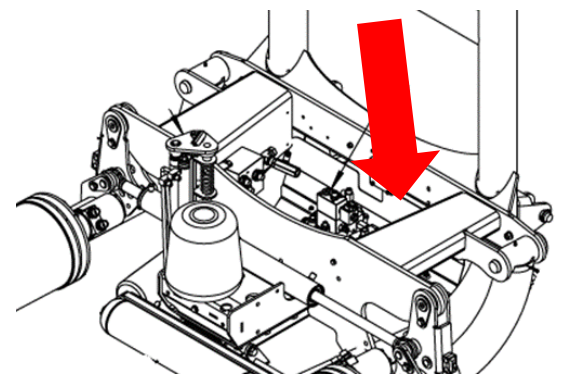
1. Activate the **"Rollers out"** (a) function to open the rollers
2. Drive into the bale until the bale contacts the bale support roller.
3. Activate **"Rollers in"** (b) to load the bale.
4. Once the bale is loaded, pressing **"Auto start"** (c) will commence wrapping.
5. When wrapping is complete, press **"Rollers out"** (a) to offload the bale.



Note: "Rollers in" & "Rollers out" functions can be operated by "one touch" meaning that the operator does not need to keep the button pressed. To activate "one touch" increase "Rollers in" & "Roller out" time in the Operator Menu.

Using the End Tip

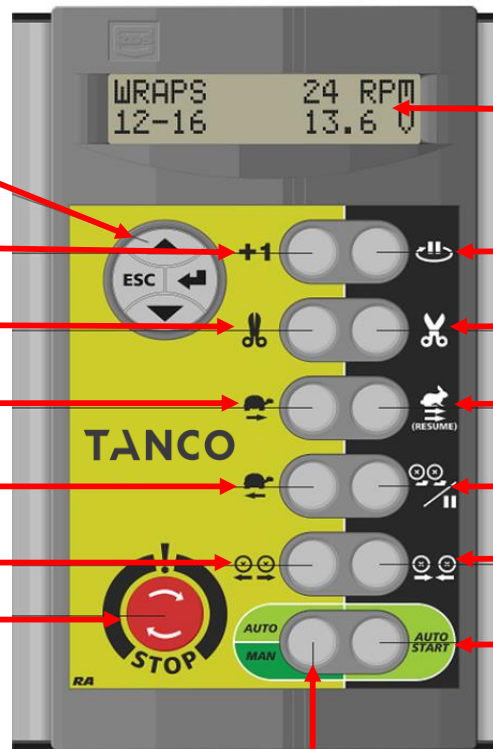
1. The End Tip must first be activated by turning a hydraulic tap which is located next to the hydraulic valve block assembly.
2. When wrapping is complete, press the "Rollers out" button (a). The End Tip will first extend before the rollers move out to unload the bale.





EXPERT CONTROLLER OPERATION

- Set No. of wraps
- Change / reset bale sub-total
- Access Operator Menu
- Access Technician Menu



- Current No. of wraps
- Target No. of wraps
- Wrapping speed (RPM)
- Bale total
- Grand total No. of bales
- Mode: Manual /Auto

- Add extra wrap
- Close cutter
- Slow wrap arm rotate
- Reverse wrap arm
- Rollers out
- Power on/off / Emergency Stop
- Pause wrapping
- Open cutter
- Fast wrap arm rotate / Resume wrapping
- Pause bale rotation (during wrapping)
- Rollers in
- Start Auto wrap cycle
- Select Manual or Auto

OPTIONAL RF REMOTE OPERATION

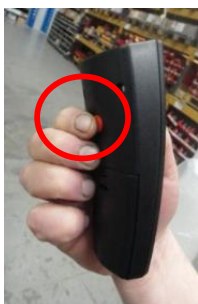
The RF (Radio Frequency) remote is required if you wish to operate the S100A wrapper statically.



RF Receiver



- Load bale / add extra wrap
- Rotate wrap arms forward
- Open Cut & Start
- Auto Start wrap
- Offload the bale
- Emergency Stop
- Rotate wrap arms in reverse
- Close Cut & Start



The red button on the rear of the remote must be pressed while pressing any other button (except "STOP").



OPTIONAL HANDHELD REMOTE

The operator can activate the main wrapper functions through the handheld remote. This means that the operator can hold the remote in their hand while operating the tractor.



Auto mode
Rollers out

Auto mode
Auto start wrap



Auto mode
Rollers in

ENTERING THE TRANSPORT POSITION

1. Fully close the loading rollers.
2. Rotate the wrap arm until it is behind the Cut & Start.
3. Insert the wrap arm transport lock.
4. Lock the safety arm into the transport position.

