



E100 SA QUICK REFERENCE GUIDE

The quick reference guide is not a substitute for the Operators Manual!
Please refer to Operators Manual for more detailed information

TRACTOR CONNECTION

1. Hydraulics

Red pipe > Supply (25-30lpm)

Blue pipe > Return (**Free flow return!!**)



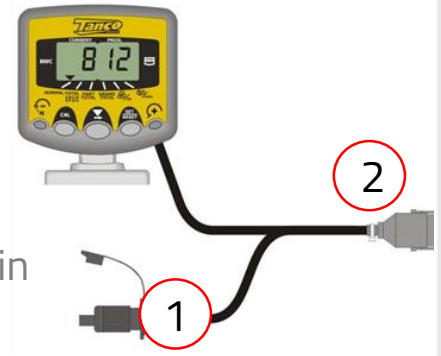
2. Electrics

1. Connect 12V supply to 3pin plug

2. Connect wrapper harness to controller

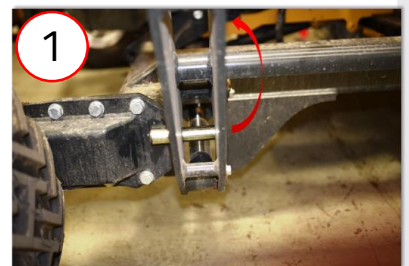
3. Control levers

Mount the control levers in the tractor cab. Place it in a position that is in comfortable reach to the operator.

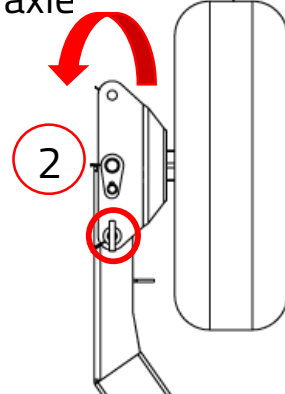


ENTERING THE WORKING POSITION

1. Remove the transport pin from the load arm.



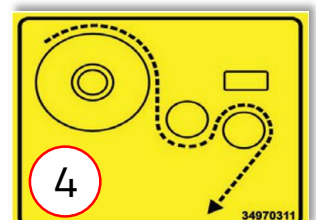
2. Remove the locking pin from the swivel axle and rotate the wheel into the working position. Reinsert the locking pin.



3. Adjust the position of the dispenser to ensure that the film will be applied to the centre of the bale.

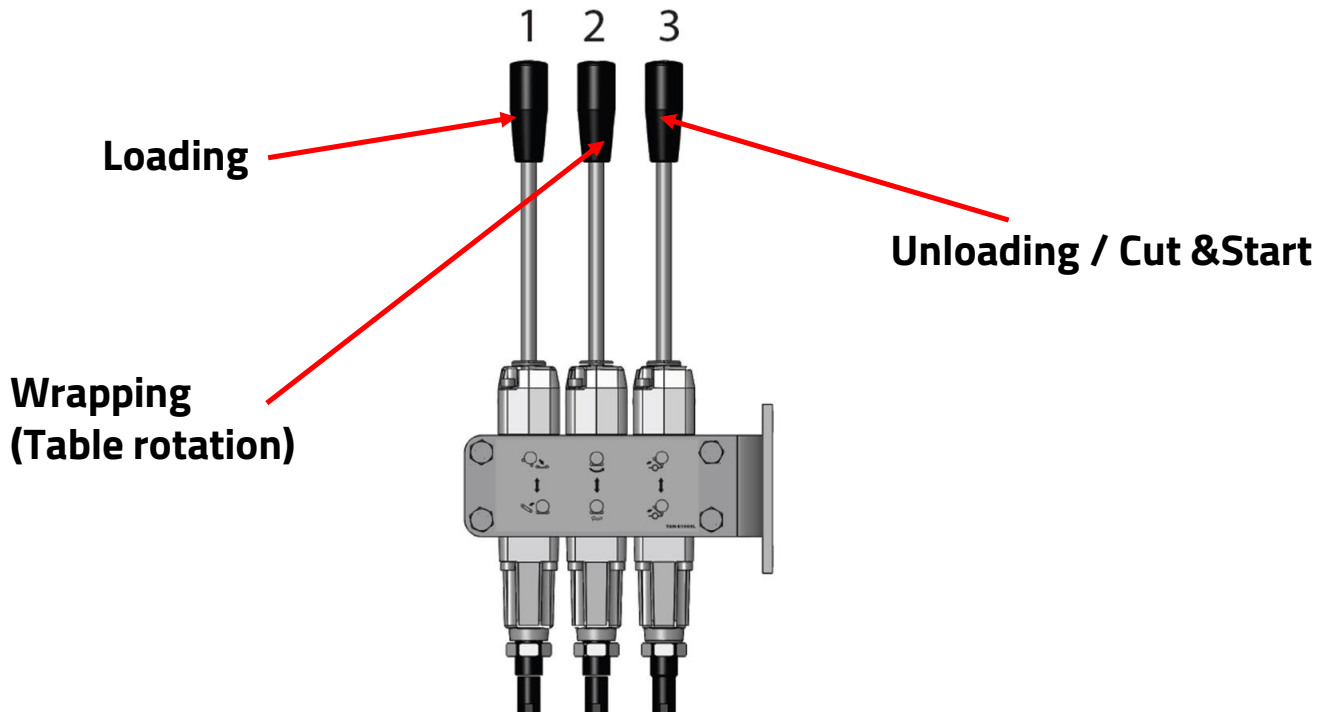


4. Add the film roll into the dispenser, ensuring that it is threaded correctly, and attach the film to the Cut & Start.

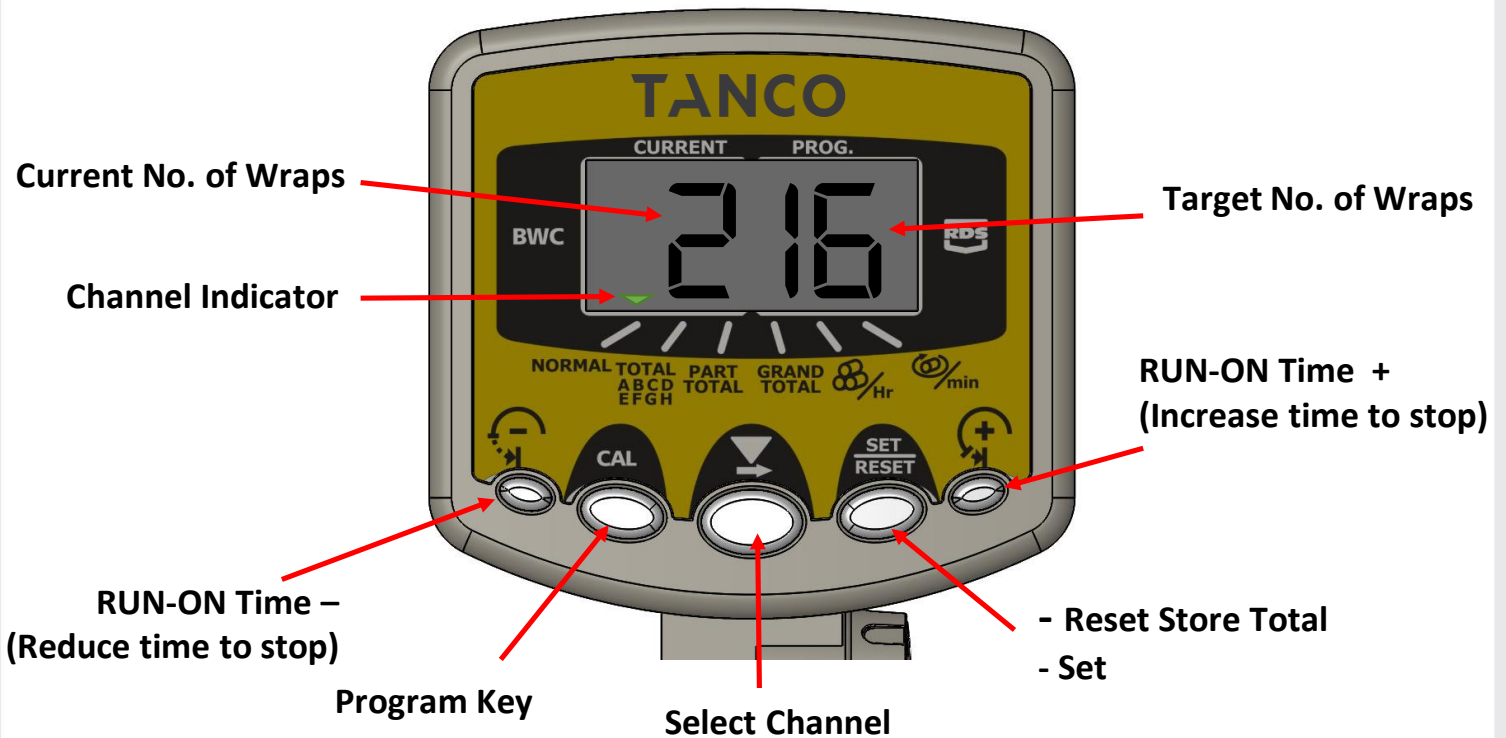




CONTROL LEVERS OPERATION



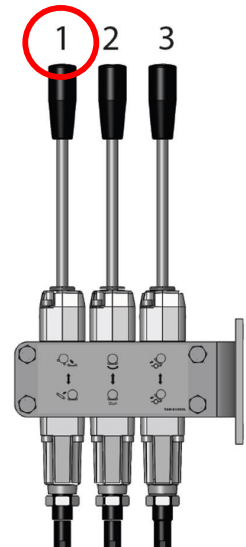
CONTROLLER OPERATION



OPERATION

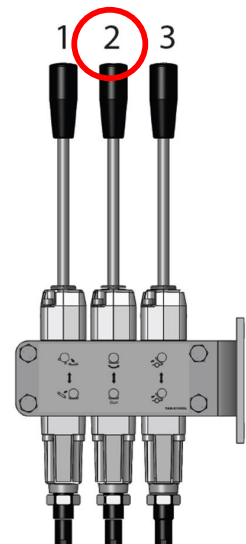
Loading

1. Lower the load arm to the ground using lever No. 1.
2. Once the bale is inside the load arm, the bale can be loaded onto the table by operating lever No.1 in the opposite direction.
3. Once the bale is loaded, the load arm can be lowered using lever No. 1.



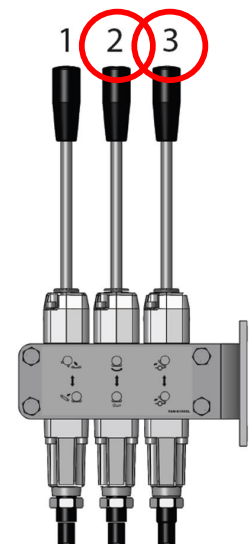
Wrapping

4. To begin rotating the table, slowly move lever No. 2.
5. Once the table has completed approx. $\frac{1}{2}$ revolution, the table speed can be increased by further moving lever No. 2.
6. Once 1 revolution is complete, lever No. 2 will be held in place by a magnet. This allows for Automatic wrapping.
7. When the target no. of wraps is reached lever No. 2 will return to neutral position and the table will stop rotating.



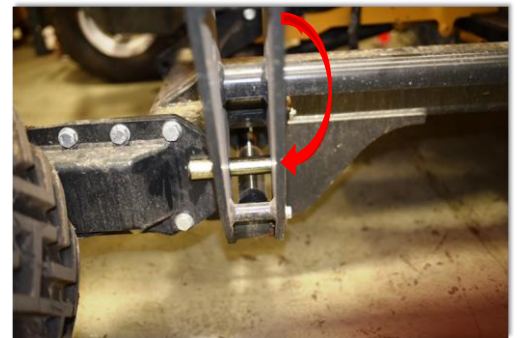
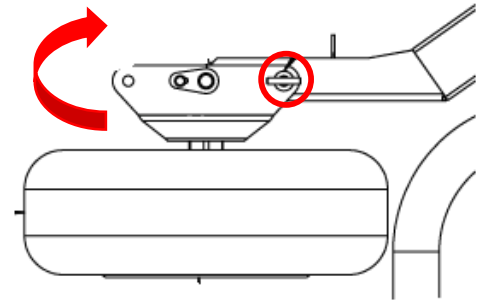
Unloading

8. When the bale is wrapped, the table might need to be reversed into the tipping position. Do this by moving lever No. 2.
9. To begin offloading the bale, operate lever No. 3. The film will also be cut during offloading.
10. Lower the table by moving lever No. 3 in the opposite direction.
11. To prepare for loading the next bale, rotate the table by moving lever No. 2.



ENTERING THE TRANSPORT POSITION

1. Remove the locking pin from the swivel axle and rotate the wheel into the transport position. Reinsert the locking pin.
2. Rotate the table into the loading position.
3. Raise the load arm fully.
4. Insert the transport pin into the load arm. This will prevent the load arm from lowering when driving on the road. The transport pin should also be used when the machine is being parked.



SETTING NO. OF WRAPS

This is a guideline only! Misshapen bales may require more wraps to achieve full coverage.

Model	Bale Diameter	4 layres	6 layres	8 layres
E100 SA	120 cm	16 wraps	24 wraps	32 wraps
E100 SA	150 cm	20 wraps	30 wraps	40 wraps

FILM CUTTING ADJUSTMENT

The point during tipping where the cutter closes can be adjusted by moving the bolt to a different hole on the linkage.

The film should be fully gathered on the cut and start frame when the cutter closes.

