



A100 EH QUICK REFERENCE GUIDE

The quick reference guide is not a substitute for the Operators Manual!
Please refer to Operators Manual for more detailed information

TRACTOR CONNECTION

1. Hydraulics

Red pipe > Supply (25-35lpm)

Blue pipe > Return (**Free flow return!!**)



2. Electrics

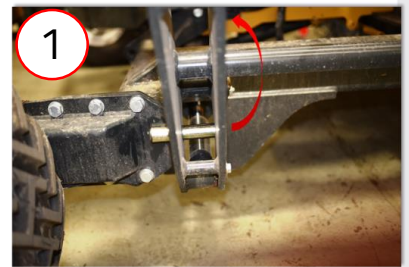
A. Connect 12V supply to 3pin plug

B. Connect wrapper harness to controller



ENTERING THE WORKING POSITION

1. Remove the transport pin from the load arm.



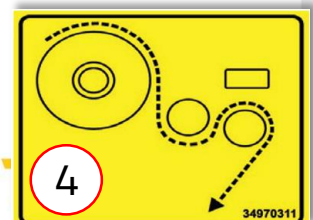
2. Adjust the load arm width to suit the correct bale size.



3. Adjust the position of the dispenser to ensure that the film will be applied to the centre of the bale.



4. Add the film roll into the dispenser, ensuring that it is threaded correctly, and attach the film to the Cut & Start.





OPERATION

Auto mode (A) Auto load + Auto wrap + Auto offload

1. Lower the load arm and drive into the bale until the Auto load paddle contacts the bale.
2. The bale will then be loaded, wrapped, and unloaded Automatically.



Auto mode (A) Auto wrap + Auto offload

1. Drive into the bale.
2. Press and release the “**Load arm up**” button on the controller (a) to load the bale.
3. The bale will be wrapped and offloaded Automatically.



Auto mode (A) Auto offload

1. Drive into the bale.
2. Press and release the “**Load arm up**” button on the controller (a) to load the bale.
3. Press “**Auto start**” on the controller (b) to begin wrapping. The bale will then be offloaded Automatically.



Auto mode (A)

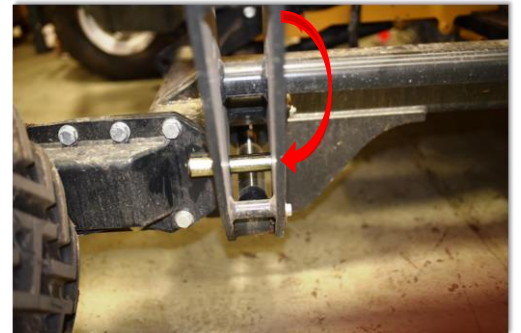
1. Drive into the bale.
2. Press the “**Load arm up**” button on the controller (a) to load the bale.
3. Press “**Auto start**” on the controller (b) to begin wrapping.
4. Press the “**Tip**” button on the controller (c) to offload the bale.





ENTERING THE TRANSPORT POSITION

1. Rotate the table into the loading position.
2. Raise the load arm fully.
3. Insert the transport pin into the load arm. This will prevent the load arm from lowering when driving on the road.
The transport pin should also be used when the machine is being parked.



SETTING NO. OF WRAPS

This is a guideline only! Misshapen bales may require more wraps to achieve full coverage.

Model	Bale Diameter	4 layres	6 layres	8 layres
A100 EH	120 cm	16 wraps	24 wraps	32 wraps
A100 EH	150 cm	20 wraps	30 wraps	40 wraps

Extra wrap can be applied during wrapping by pressing the "+1" button.

The "No. of Wraps" will return to the set value for the next bale.





EXPERT CONTROLLER OPERATION

4-way Menu switch:

- Set No. of wraps
- Change/reset bale sub-total
- Access Operator Setup Menu
- Access Technician Setup Menu

Display in normal working mode:

- Current No. of Wraps
- Target No. of Wraps
- Wrapping speed
- Bale Total (10 separate stores)
- Mode: M (Manual) / A (Auto)

L1 – Table - tip down (in Manual mode)

L2 – Cut and Grip Film

L3 – Slow Wrap

L4 – Reverse Table

L5 – Load Arm down

Power On/Off / Emergency Stop

R1 – Table - tip up in Manual mode Autotip in Automatic mode

R2 – Release Film Grip

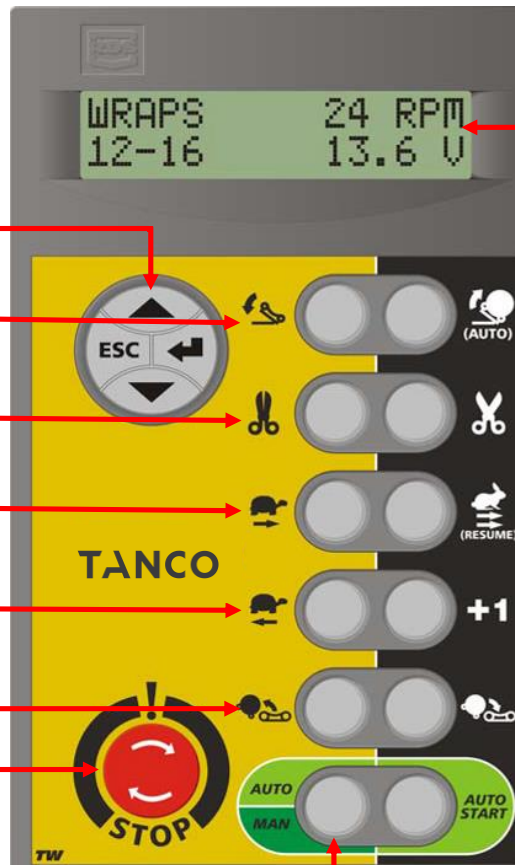
R3 – Fast Wrap / Resume Wrap (after stopping mid-cycle using the STOP-switch)

R4 – Add 1 wrap to current (or next) bale (only in automatic mode)

R5 – Load Arm up

R6 – Start Automatic cycle

L6 – Select Operating Mode: „M“ or „A“



OPTIONAL RF REMOTE OPERATION

The RF (Radio Frequency) remote is required if you wish to operate the A100EH wrapper statically.

RF Receiver



Load bale / add extra wrap

Rotate table forward

Open Cut & Start

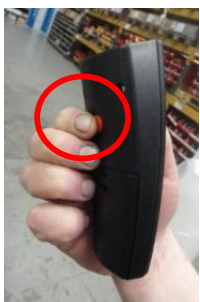
Auto Start wrap

Offload the bale

Emergency Stop

Rotate table in reverse

Close Cut & Start



The red button on the rear of the remote must be pressed while pressing any other button (except "STOP").